

## Operational Instructions

Apply to: D340W



FR

Cet appareil,  
ses accessoires  
et cordons  
se recyclent

À DÉPOSER  
EN MAGASIN



OU

À DÉPOSER  
EN DÉCHÈTERIE



**PAP 22**  
Raccolta Carta

Points de collecte sur [www.quefairedemesdechets.fr](http://www.quefairedemesdechets.fr)  
Privilégiez la réparation ou le don de votre appareil !

58.03.001.0685



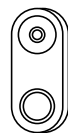
@ReolinkTech

<https://reolink.com>

## Content

What's in the Box .....	2
Doorbell Introduction .....	3
Set up the Doorbell .....	4
Install the Doorbell .....	8
Remove the Doorbell .....	13
Specifications .....	14
Important Safety Instructions .....	14
Legal Disclaimer .....	15
Notification of Compliance .....	17

## What's in the Box



Doorbell



Chime



Corner Wedge



Mounting Plate



Mounting  
Hole Template



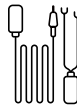
1m  
Ethernet Cable



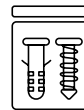
Extension Cable



Jumper Cable



Power Adapter &  
Power Extension Cable

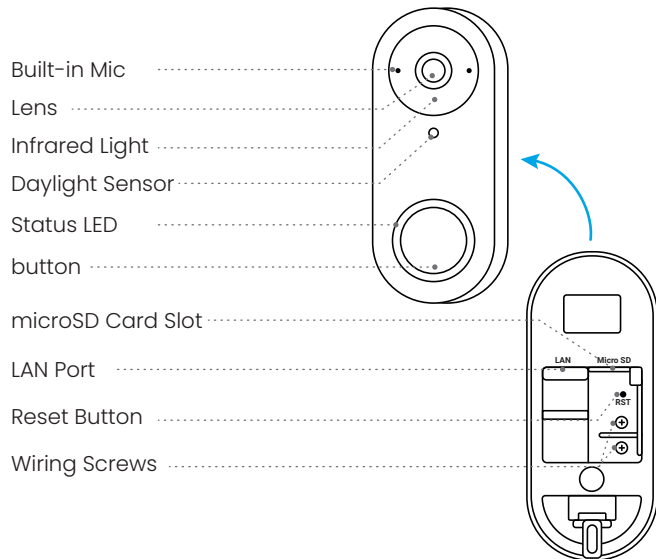


Pack of Screws



Operational  
Instructions

## Doorbell Introduction



## Set up the Doorbell

### Set up the Doorbell on Phone

#### Step 1

Scan to download the Reolink App from the App Store or Google Play Store.

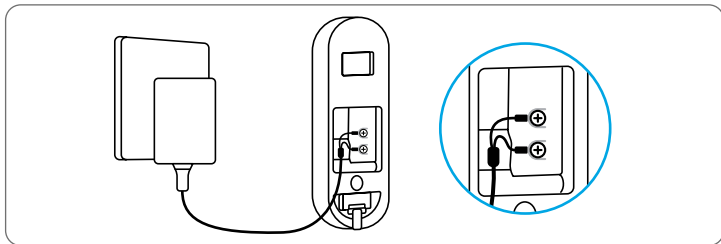


**NOTE:** If the Reolink App is already existed, please check if it is the newest; if no, please update it.

## Step 2

Power on the video doorbell.

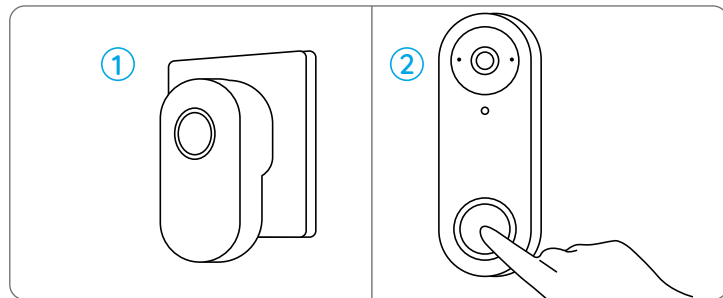
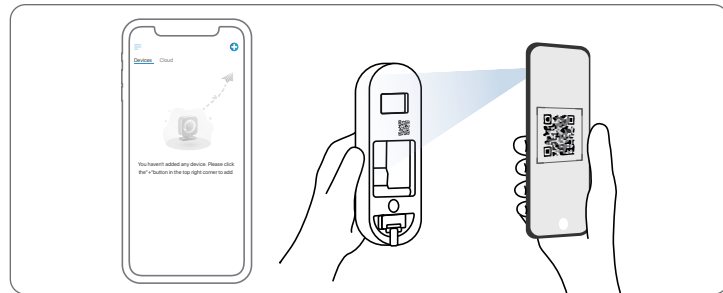
Connect the power cable to the screws on the back of doorbell, then power it on with the power adapter.



**NOTE:** Make sure the Y-shape plugs are separate from each other.

## Step 3

Launch the Reolink App. Click the “+” button in the top right corner and scan the QR code on the doorbell and follow the onscreen instructions to finish the initial setup.



## Set up the Doorbell on PC (Optional)

### Step 1

Download and install the Reolink Client. Go to <https://reolink.com> > Support > App & Client

### Step 2

Power on the video doorbell.

### Step 3

Launch the Reolink Client. Click the “+” button and input the UID number of the doorbell to add it.

### Step 4

Follow the onscreen instructions to finish the initial setup.

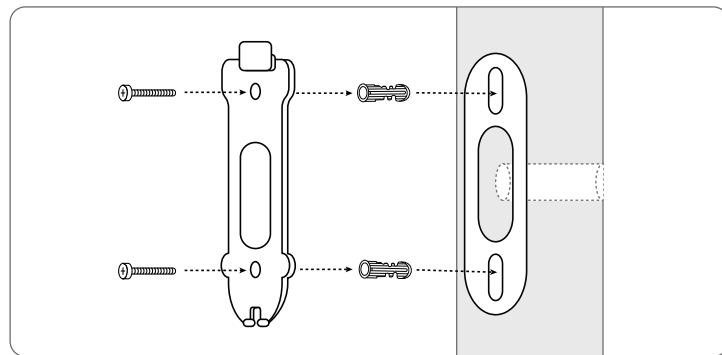
## Install the Doorbell

### Step 1

Put the mounting hole template on the wall by the door and drill holes as shown.

### Step 2

Install the mounting plate using the long screws provided through the two holes.

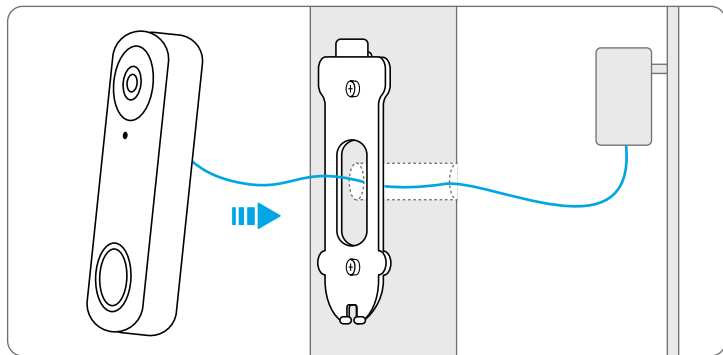


### Step 3

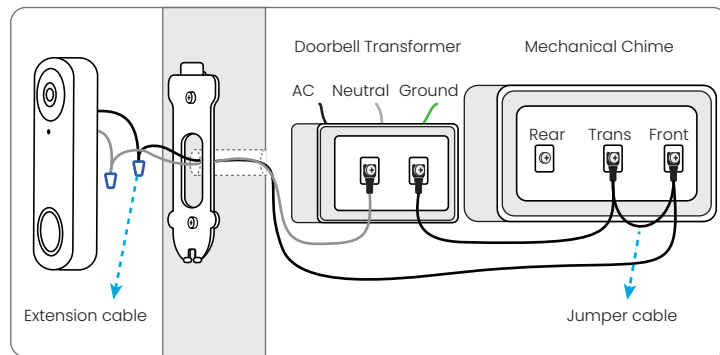
Run the power adapter through the mounting plate and the hole on the wall to connect it to the doorbell, then attach the doorbell to the plate.

### Step 4

Plug the power adapter into a socket near the door. Use the long power extension cable if the socket is too far away from your doorbell.



**NOTE:** Reolink Video Doorbell PoE&Wi-Fi can also be powered by the existing doorbell wiring system. In such case, you are required to first bypass the existing mechanical chime with the jumper cable to get sufficient power. Without sufficient power, the doorbell may restart and has an unstable connection, and the mechanical chime may vibrate and generate noise. If the wire is not long enough, use the extension cable, as shown below. After the installation, the existing mechanical chime will not ring anymore. Use the extension cable to extend the length of the existing power cable for the doorbell, as shown below.



## Install a Wedge (Optional)

If you need to adjust the angle of the doorbell, you can use the wedge provided. (The Reolink Video Doorbell PoE is taken as an example)

### Step 1

Put the mounting hole template on the wall and drill holes as shown.

### Step 2

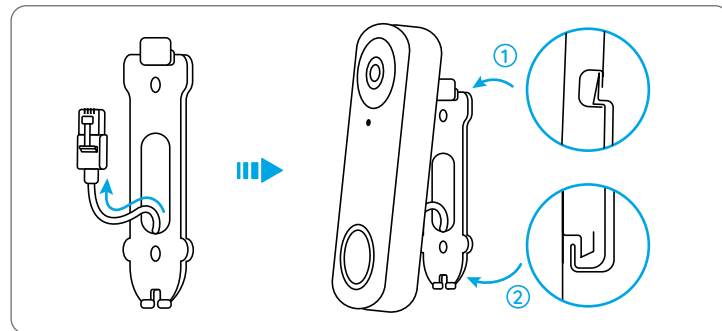
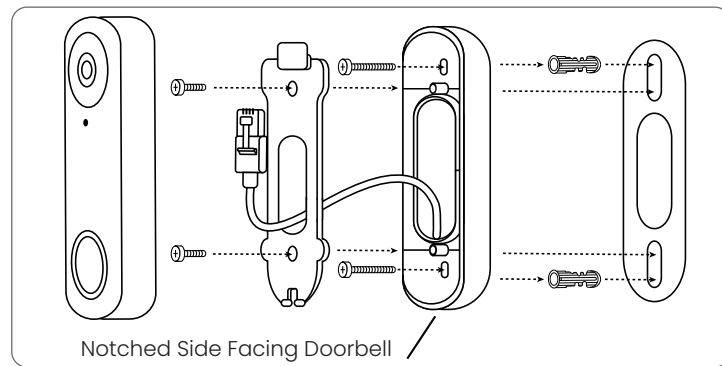
Install the wedge using the screws provided through the two holes. Ensure that the notched side of the wedge is facing outside.

### Step 3

Screw the mounting plate to the wedge.

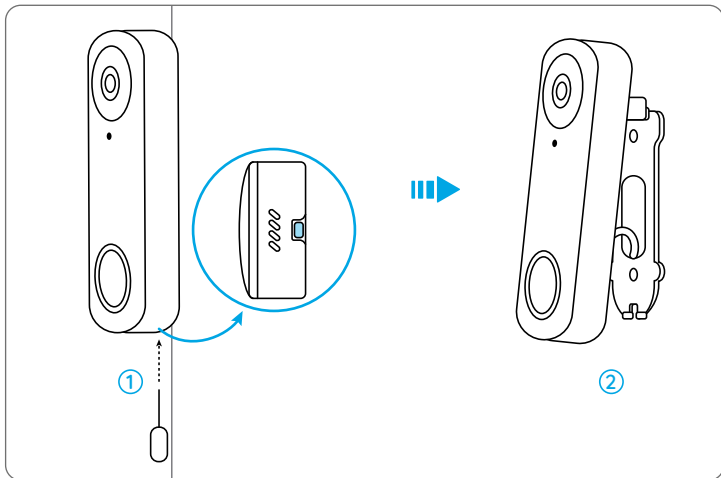
### Step 4

Run the Ethernet cable through the wedge and mounting plate, and attach the doorbell to the plate.



## Remove the Doorbell

If you want to remove the doorbell from the mounting plate, you may use the reset needle to poke the bottom.



## Specifications

Field of View:

Black Version: 135° Horizontal, 100° Vertical, 180° Diagonal

White Version: 100° Horizontal, 135° Vertical, 180° Diagonal

Operating Temperature: -10° C – +50° C (14° F – 122° F)

Dimension: 133 x 48 x 23mm

Weight: 96g

## Important Safety Instructions

Please read the instructions carefully before using the device.

1. Replace only with the same or equivalent type of accessories recommended by Reolink.
2. Do not use the device in an environment that exceeds the recommended temperature range.
3. Do not use the device in an environment that exceeds the recommended humidity range.
4. Do not attempt to disassemble, repair, or alter the device by yourself.
5. Always follow the local safety laws and regulations when using the device.
6. The device contains (or comes with) small components, small plastic elements, and other small parts that may cause choking hazards. Keep the device and its accessories out of reach of children. Consult a physician immediately if small parts are swallowed.
7. The device contains (or comes with) cables or cords that may cause strangulation hazards. Keep the device and its accessories out of reach of children.



## Legal Disclaimer

To the maximum extent permitted by applicable law, this document and the product described, with its hardware, software, firmware, and services, are delivered on an "as-is" and "as-available" basis, with all faults and without warranty of any kind. Reolink disclaims all warranties, express or implied, including but not limited to, warranties of merchantability, satisfactory quality, fitness for a particular purpose, accuracy, and non-infringement of third-party rights. In no event will Reolink, its directors, officers, employees, or agents be liable to you for any special, consequential, incidental or indirect damages, including but not limited to damages for loss of business profits, business interruption, or loss of data or documentation, in connection with the use of this product, even if Reolink has been advised of the possibility of such damages.

To the extent permitted by applicable law, your use of the Reolink products and services is at your sole risk and you assume all risks associated with internet access. Reolink does not take any responsibilities for abnormal operation, privacy leakage or other damages resulting from cyber attacks, hacker attacks, virus inspections, or other internet security risks. However, Reolink will provide timely technical support if required.

The laws and regulations related to this product vary by jurisdiction. Please check all relevant laws and regulations in your jurisdiction before using this product to ensure that your use conforms to the applicable law and regulation. During the use of the product, you must comply with relevant local laws and regulations. Reolink is not responsible for any illegal or improper use and its consequences. Reolink is not liable in the event that this product is used with illegitimate purposes, such as third-party rights infringement, medical treatment, safety equipment, or other situations where the product failure could lead to death or personal injury, or for weapons of mass destruction, chemical and biological weapons, nuclear explosion, and any unsafe nuclear energy uses or anti-humanity purposes. In the event of any conflicts between this manual and the applicable law, the latter prevails.

# Notification of Compliance

## FCC Statement

This device complies with Part 15 of the FCC Rules. Operation is subject to the following two conditions:

(1) This device may not cause harmful interference, and  
(2) This device must accept any interference received, including interference that may cause undesired operation. Changes or modifications not expressly approved by the party responsible for compliance could void the user's authority to operate the equipment. This equipment has been tested and found to comply with the limits for a Class B digital device, pursuant to Part 15 of the FCC Rules. These limits are designed to provide reasonable protection against harmful interference in a residential installation. This equipment generates uses and can radiate radio frequency energy and, if not installed and used in accordance with the instructions, may cause harmful interference to radio communications. However, there is no guarantee that interference will not occur in a particular installation. If this equipment does cause harmful interference to radio or television reception, which can be determined by turning the equipment off and on, the user is encouraged to try to correct the interference by one or more of the following measures:

- Reorient or relocate the receiving antenna.
- Increase the separation between the equipment and receiver.
- Connect the equipment into an outlet on a circuit different from that to which the receiver is connected.
- Consult the dealer or an experienced radio/TV technician for help.

## FCC Radiation Exposure Statement

This equipment complies with FCC radiation exposure limits set forth for an uncontrolled environment. This equipment should be installed and operated with minimum distance 20cm between the radiator & your body.

## ISED Statement

This device complies with Industry Canada licence-exempt RSS standard(s). Operation is subject to the following two conditions:

(1) this device may not cause interference, and  
(2) this device must accept any interference, including interference that may cause undesired operation of the device."

This equipment should be installed and operated with a minimum distance of 20 cm between the radiator and your body.

Le présent appareil est conforme aux CNR d'Industrie Canada applicables aux appareils radio exempts de licence. L'exploitation est autorisée aux deux conditions suivantes :

(1) l'appareil ne doit pas produire de brouillage, et  
(2) l'utilisateur de l'appareil doit accepter tout brouillage radioélectrique subi, même si le brouillage est susceptible d'en compromettre le fonctionnement."

Cet équipement doit être installé et utilisé avec une distance minimale de 20 cm entre le radiateur et votre corps.

MODIFICATION: Any changes or modifications not expressly approved by the grantee of this device could void the user's authority to operate the device.

Toute modification non approuvée explicitement par le fournisseur de licence de l'appareil peut entraîner l'annulation du droit de l'utilisateur à utiliser l'appareil.

This Class B digital apparatus complies with Canadian ICES-003.  
Cet appareil numérique de la classe B est conforme à la norme NMB-003 du Canada

Operation of 5150-5350 MHz is restricted to indoor use only.  
Le fonctionnement de 5150-5350 MHz est limité à une utilisation en intérieur uniquement.

## **CE SIMPLIFIED EU AND UK DECLARATION OF CONFORMITY**

Hereby, REOLINK INNOVATION LIMITED declares that the radio equipment type [refer to the cover of the Operational Instructions] is in compliance with Directive 2014/53/EU. The full text of the EU and UK declaration of conformity is available at the following internet address: <https://support.reolink.com/hc/en-us/articles/36788378727065/>

RF exposure information: The Maximum Permissible Exposure (MPE) level has been calculated based on a distance of 20cm between the device and the human body. To maintain compliance with RF exposure requirement, use product that maintain a 20cm distance between the device and human body.

## **Wi-Fi Operating Frequency**

Operating Frequency :

2412~2472MHz RF Power: ≤20dBm(EIRP)

5150~5250MHz RF Power: ≤23dBm(EIRP)

5250~5350MHz RF Power: ≤23dBm(EIRP)

5470~5725MHz RF Power: ≤23dBm(EIRP)

5725~5875MHz RF Power: ≤14dBm(EIRP)

868MHz RF Power: ≤13.9dBm(EIRP)



The functions of Wireless Access Systems including Radio Local Area Networks(WAS/RLANs) within the band 5150-5350 MHz for this device are restricted to indoor use only within all European Union countries

(BE/BG/CZ/DK/DE/EE/IE/EL/ES/FR/HR/IT/CY/LV/LT/LU/HU/MT/NL/AT/PL/PT/RO/SI/SK/FI/SE/TR/NO/CH/IS/LI/UK(NI))



## **Correct Disposal of This Product**

This marking indicates that this product should not be disposed with other household wastes throughout the EU. To prevent possible harm to the environment or human health from uncontrolled waste disposal, recycle it responsibly to promote the sustainable reuse of material resources. To return your used device, please use the return and collection systems or contact the retailer where the product was purchased. They can take this product for environmentally safe recycling.

(a)the equipment does not have a standby mode or other equivalent state in terms of energy efficiency requirements, power management function or the ability to deactivate wireless network connections mode;  
(b)the power consumption of the equipment is likely to be higher than other equipment models meeting these functional requirements.

## Limited Warranty

This product comes with a 2-year limited warranty that is valid only if purchased from Reolink Official Store or a Reolink authorized reseller. Learn more: <https://reolink.com/warranty-and-return/>.

**NOTE:** We hope that you enjoy the new purchase. But if you are not satisfied with the product and plan to return, we strongly suggest that you reset the camera to factory default settings and take out the inserted SD card before returning.

## Terms and Privacy

Use of the product is subject to your agreement to the Terms of Service and Privacy Policy at [reolink.com](https://reolink.com)

## Terms of Service

By using the Product Software that is embedded on the Reolink product, you agree to the terms&conditions between you and Reolink. Learn more: <https://reolink.com/terms-conditions/>

## Technical Support

If you need any technical help, please visit our official support site and contact our support team before returning the products, <https://support.reolink.com>.

## Trademarks Acknowledgement

“Reolink” and other Reolink’s trademarks and logos are the properties of Reolink. Other trademarks and logos mentioned are the properties of their respective owners.

REOLINK INNOVATION LIMITED  
FLAT/RM 705 7/F FA YUEN COMMERCIAL BUILDING 75-77 FA YUEN STREET  
MONG KOK KL HONG KONG