

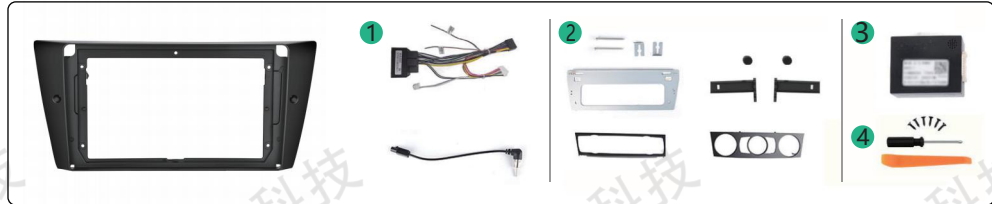
For BMW E90/E92/E93 2005-2012 /C7201

Central Control Disassembly and Operation
Post-installation rendering



TOOLS REQUIRED FOR DISASSEMBLY

- 1.Wires 2.Mounting Bracket
3.Canbus Box 4.Installation Tools



Disassembly:

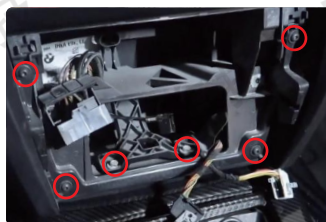
- 1 Use a pry bar to lever out the air conditioning control board, unplug the power cord, and remove the control board.



- 2 Loosen the two screws at the bottom, and remove the car player, then unplug the power cord.



- 3 Unscrew the four screws and two hex nuts at the bottom, and remove the internal frame.

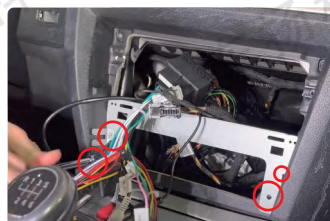
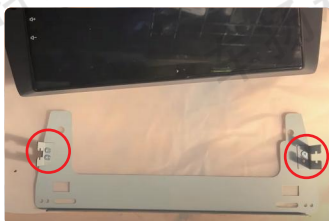


PROPOSE

Before starting the replacement job, you should prepare tools such as a plastic pry tool and a screwdriver, and make sure the car's power is cut off during the installation.

Installation (If the wiring harness does not match, please contact customer service to request the correct wiring harness)

- 1 Attach two clips to the metal piece, secure it to the internal frame, and tighten the two bottom screws. Finally, tighten the remaining four small screws.



- 1 Connect the new car player's power cord to the original car wiring, match the plugs, and secure the player in position.



- 2 Plug the air conditioning control panel into the original car wiring, and reinstall it back to its original position.



- 4 Tighten the two screws on the car player frame and cover them with the screw caps. Once all the removed panels are installed, you can use the new radio!



COMPARATION

Effect of Installation



GENTLE REMINDERS

Due to the complexity of the product structure, you may encounter some problems during installation. If you still have any questions about the installation after reading this manual, you can contact us and we will respond to you within 24 hours. Don't worry; we will do our best to solve the problem for you until you are satisfied.

After-sales email: cheyang728@gmail.com

WARN FCC WARNING

This device complies with Part 15 of the FCC Rules. Operation is subject to the following two conditions:

- (1) This device may not cause harmful interference.
- (2) This device must accept any interference received, including interference that may cause undesired operation