



THE ORIGINAL UNDERWATER VIEWING SYSTEM

Micro *Revolution* 5.0 User Manual



User Manual

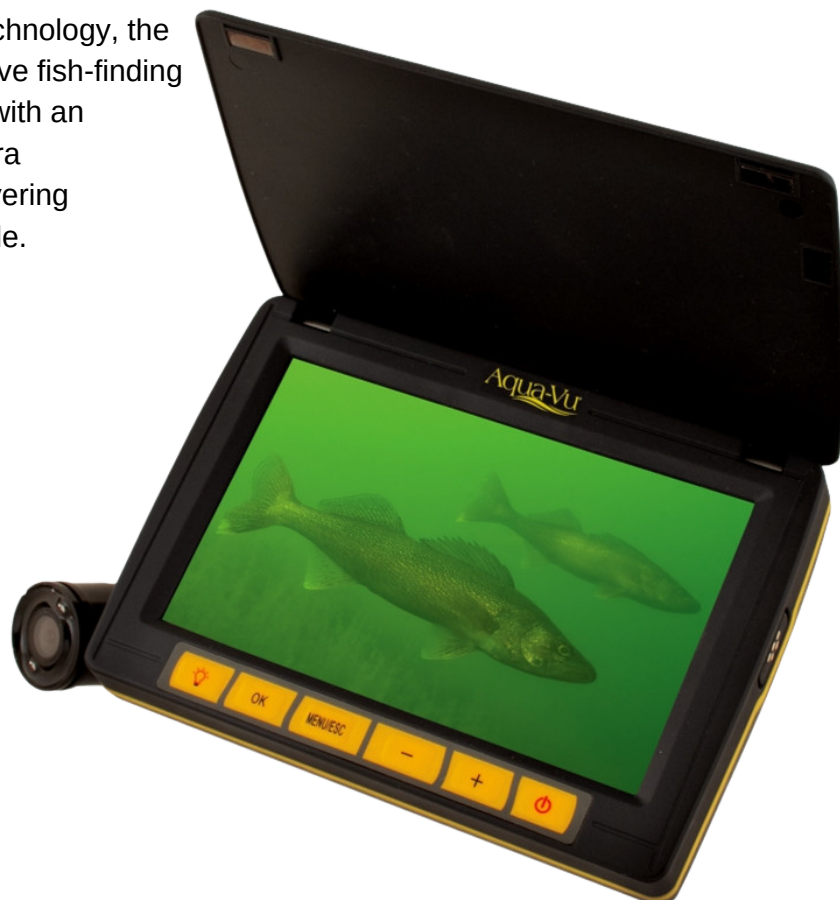
WWW.AQUAVU.COM



THE ORIGINAL UNDERWATER VIEWING SYSTEM

Micro *Revolution 5.0*

From the innovators in underwater viewing technology, the micro Revolution 5.0 puts the most powerful live fish-finding tool right in the palm of your hand. Equipped with an industry exclusive, patented Integrated Camera Reel System, you will spend more time discovering hotspots and less time managing camera cable.



INCLUDED ESSENTIALS / SPECIFICATIONS:

- 5-inch High-Resolution LCD
- IP67 Waterproof LCD
- 60-feet of cable with Depth Indication
- RCA Video Output
- Rechargeable Lithium-Ion Battery with On Screen Indicator
- Fits into Coat Pocket or Tackle Box/Bag
- Compatible on ice, in freshwater and saltwater



Adjustable Camera Clips and Trolling Fin for Viewing on Ice & Open Water





THE ORIGINAL UNDERWATER VIEWING SYSTEM

Micro *Revolution* 5.0

User Manual

Menu/Settings

To display the settings screen, press the menu/esc button. Use +/- arrow keys to toggle between settings. To adjust a setting, toggle until the desired setting is highlighted in red. Then press the ok button to select. Use the +/- arrow keys to adjust the setting values. Press Menu/Esc when finished to exit and return to the settings menu. Press Menu/Esc again to return to viewing mode.

Display Brightness - Adjust this setting to increase your battery life. By decreasing the value you will be decreasing the lcd backlight, which will increase your battery run time. Increasing the value, will increase the lcd backlight for improved daylight visibility.

Brightness/Contrast/Saturation - Increasing or decreasing these values will adjust the camera settings on your display screen, similar to your tv.

Reset - To return all settings back to the factory default, toggle until the word rest is highlighted. Once it is highlighted press the ok button. Use the +/- arrow keys until "yes" is highlighted in red. Press the ok button.

Other Features

IR Lighting - To turn on/off the IR lighting system, press the light bulb button on the display screen.
Battery Indicator - To view the current battery level, press the power button and quickly release. The remaining battery level will be displayed in the upper right-hand corner.

Auto-Off - The system will automatically power off when the lid is closed.

Video Out - Use the supplied magnetic yellow component cable to connect to any RCA compatible television or lcd screen.

Camera Monitor Mounting Adaptor - Included within the accessory bag is a threaded metal adaptor. This can be used with the included wrist strap or may also be used for attaching the Pro-Snake Camera Mount (sold separately).



Micro *Revolution* 5.0

User Manual



CONTACT SUPPORT

Our Website: www.help.aquavu.com

Support: Click on support—contact us. Enter your name and information and we will get back to you within 2 business days.

Phone: Give us a call at 866-755-6303. Normal business hours are 8am to 4pm M-F Central

Physical Address:

- Stop by during normal business hours 8am to 4pm M-F Central
- Our address is: 34076 County Rd 3 Crosslake, MN 56442

Thank you for your purchase!

Sincerely,

Team Aqua-VU



For helpful tips and FAQ's, visit our Online Help Center
WWW.help.aquavu.com or scan the QR code with
the camera on your phone