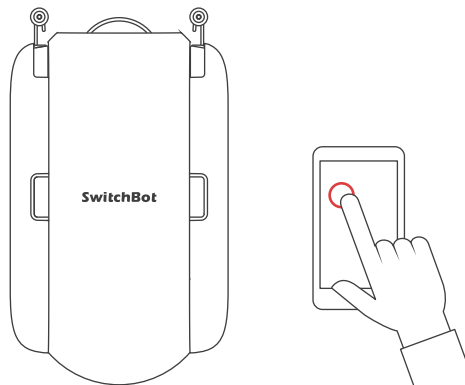


SwitchBot Curtain U Rail 2

User Manual



www.switch-bot.com

V5.2-2208

※ Please read this user manual carefully before using your device.

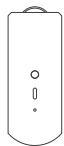


Contents

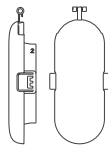
1. Package Contents	01
2. List of Components	02
3. Preparation	03
4. Installation	04
5. Usage Methods	13
6. Settings	16
7. Charging, Firmware Upgrades and Resetting Factory Settings	17
8. Specifications	19
9. Warranty	21
10. Contact & Support	22

For more support please visit support.switch-bot.com

Package Contents



Main Unit



Hook Pair (U Rail 2)



Hook Helper



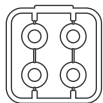
Type-C Cable



Hook Wheel

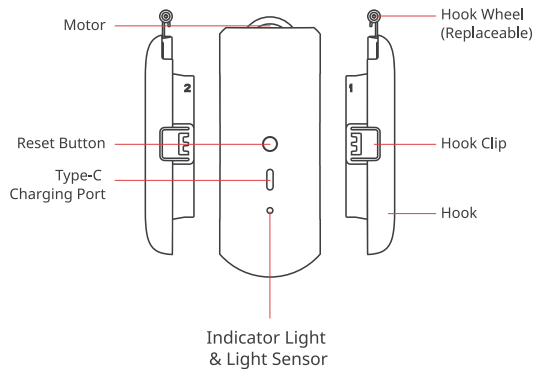


Clip



Hook Wheel Attachment

List of Components



Preparation

You will need:

- A smartphone or tablet using Bluetooth 4.2 or later.
- The latest version of our app, downloadable via the Apple App Store or Google Play Store.
- A SwitchBot account, you can register via our app or sign in to your account directly if you already have one.
- A fully charged SwitchBot Curtain.

Please note: If you intend to use Cloud Services for voice control, you will need a SwitchBot Hub Mini (sold separately).



iOS 11.0+



Android OS 5.0+

Installation

Step 1: Add your Curtain to the SwitchBot app

Open the SwitchBot app and sign in to your account. Tap "+" at the top right of the home page, find the Curtain icon and select, then follow the instructions to add your Curtain.

Step 2: Install your Curtain on curtain track

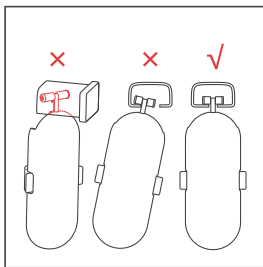
Find the best matching Hook Wheel

One set of Hook Wheels has already been installed on the Hook Pair upon delivery. In the box, there are also several different-sized sets of Hook Wheels for you to replace with. Please follow the steps below to find the best matching set of Hook Wheels for your curtain track.

1. Insert the separate Hook from the bottom gap of your curtain track and rotate it by 90° to fit the Hook Wheels on the track. Slide it left and right to see if it goes smoothly, then tilt it back and forth to check if it matches the track.

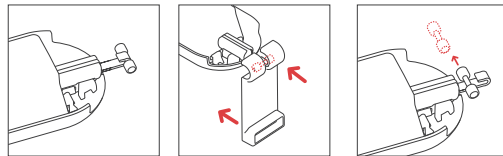
- If the Hook cannot be inserted onto your curtain track, or cannot be rotated after being inserted, replace with a smaller set of Hook Wheels.
- Try pull the Hook towards one side and tilt it, if it falls easily from the curtain track, you need to replace with a bigger set of Hook Wheels.

If the Hook slides smoothly. You can continue the installation steps. If you have tried with every set of Hook Wheels provided and none of them worked as expected, please contact our customer support at support@wondertechlabs.com.

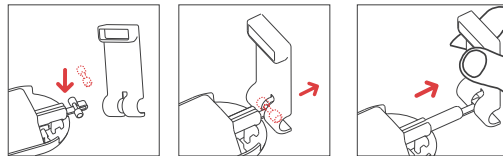


2. Replacing the Hook Wheels

- ① Detach the existing Hook Wheels from the separate Hook (use the Hook Helper for an easier removal).



- ② Select one set of Hook Wheels with the appropriate size. Flick the two plastic wheels to both sides to expose the metal bar in the middle. Attach the set of Hook Wheels to the Hook as shown in the picture. You should hear a click once it is firmly attached.

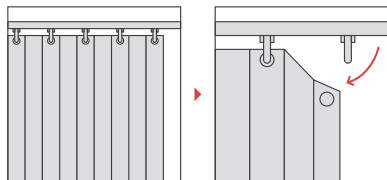


- ③ Repeat the same steps to replace the Hook Wheels on the other Hook with the main unit.

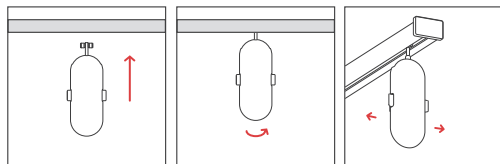
Install your Curtain on curtain track

1. Installation for Common Models

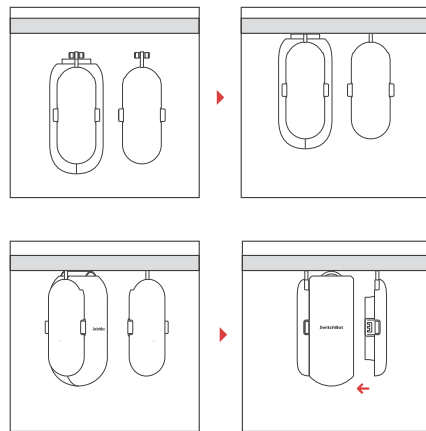
- ① Fully close your curtain, then remove the first curtain hook from the track.



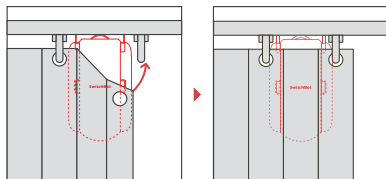
- ② Insert the separate Hook from the bottom gap of your curtain track and rotate it by 90° to fit the Hook Wheels on the track.



- ③ Insert the Hook with the main unit onto the curtain track. Then attach the separate Hook back to the main unit. The SwitchBot logo should face indoors.



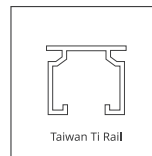
- ④ Hang your curtain back in place and hide SwitchBot Curtain behind your fabric curtain.



2. Installation for Specific Models

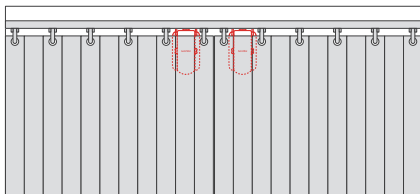
If SwitchBot Curtain does not work smoothly on your curtain track, your curtain track type may be one of the non-standard tracks. Below are two examples of non-standard curtain tracks. Please scan the QR code below or visit the following website for detailed solutions for those types of curtain tracks.

<https://support.switch-bot.com/hc/en-us/articles/1500012094841>



How to Control Double-Sided Curtains

If you are using a double-sided curtain, we recommend you use two SwitchBot Curtains to open your curtains from the middle.



If you have only purchased 1 SwitchBot Curtain, you may use the clips provided to join your curtains together and turn them into a single-sided curtain.

Please note: Using just 1 SwitchBot Curtain to control a double-sided curtain may affect user experience.

Step 3: Calibration

After you have added and installed your SwitchBot Curtain, you will need to calibrate it to set its route on your curtain track. Please follow the instructions in our app to make sure that the actual movement of your curtain is the same as the animation in the app. You can choose to recalibrate the Curtain or change its opening direction whenever you want by going to Curtain > Settings > Calibration.

Please note: You can group two SwitchBot Curtains via our app should you plan to open your curtains from the middle. Before you calibrate, please make sure the positions of your SwitchBot Curtains are the same as shown in our app.

Usage Methods

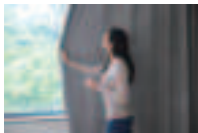
App Control

Open and close your curtains with just the tap of a button. We offer intuitive app control for iOS and Android users, with weekly/bi-weekly updates. OTA firmware updates are also available to give you a better user experience.



Touch & Go

When SwitchBot Curtain senses you drawing your curtain for more than 5 cm, it will automatically start and do the work for you. For a double-sided curtain, you only need to pull one side of it to activate your Curtain. Please note: You can turn off this feature on the Advanced Settings page of the Curtain at any time.



*5cm lowers the possibility of false triggers by foreign objects, pets, children, etc.

Voice Control and Home Automation*

You can link multiple third-party services to your SwitchBot account to control your SwitchBot Curtain or trigger Scenes using voice commands.

How to realize voice control and home automation:

- Connect your smartphone or tablet to the Internet.
- Set up a SwitchBot Hub Mini (sold separately).
- Turn on Cloud Services via SwitchBot Curtain's Settings page.
- Link third-party services to your SwitchBot account.

Alexa, close the curtain.

Hey Google, close my bedroom curtain.

Hey Siri, open the living room curtain.

* Requires SwitchBot Hub Mini (sold separately).



Control with SwitchBot Remote (Sold Separately)



A wireless remote to place anywhere.

You can also control your SwitchBot Curtain using a SwitchBot Remote. There are two buttons on the Remote and you can set an action for each via our app, for example, one button for fully opening and another for fully closing your Curtain. One Remote can also control 2 SwitchBot Curtains that have been grouped. Please refer to the user manual of Remote for more information.

Settings

Light Sensor (Beta)

This allows you to set automations based on the illuminance level or the relative intensity of sunlight around your device. This is a beta stage function and is being upgraded continuously. You can find more details in future app releases.

Delay

You can set 1 Delay for countdown action. You can set the countdown time, percentage of opening or closing, and Motion Mode.

Schedule

You can set up to 5 Schedules locally on your device, or unlimited Schedules with a SwitchBot Hub. You can set the day, time, percentage of opening or closing, and Motion Mode.

Charging, Firmware Upgrades, and Resetting Factory Settings

Charging

It takes about 6.5 hours to fully charge your device battery and this can last for up to 8 months after one full charge. You may also purchase our Solar Panel to charge using sunlight.

1. A 5V \approx 1A adapter is required to charge your device.
2. Battery life is tested under conditions of opening and closing a 8 kg (17 lbs) curtain on a 3-meter-long track once a day under 25 °C. Actual battery life may vary depending on different conditions.
3. Charging with Solar Panel requires a level 6 illuminance level at least.

Firmware Upgrades

In order to improve user experience, we will regularly release firmware updates to introduce new functions and solve any software defects that may occur during usage. When a new

firmware version is available, we will send an upgrade notification to your account via our app. When upgrading, please make sure your product has sufficient battery and make sure your smartphone is within range to prevent interference.

Resetting Factory Settings

Press and hold the Reset button for 15 seconds until the indicator light lights up, then release the button.



Caution: You may lose all previous settings after factory reset and you will need to add the device again and redo calibration. If you are using a double-sided curtain, you will need to recalibrate both Curtains.

Specifications

Model: W0701600

Color: White/Black

Material: ABS plastic with UV-resistant coating

Size (Main Unit): 42 × 51 × 110 mm (1.7 × 2 × 4.3 in.)

Weight (Main Unit): 135 g (4.8 oz.)

Power: Type-C, DC 5V=1A, 3350 mAh lithium-ion battery or by Solar Panel¹

Battery Life: 8 months², or unlimited with Solar Panel

Network Connectivity: Bluetooth 5.0, long range transmission

Sensor: Accelerometer, light sensor

Strength: Supports curtain of up to 8 kg (17 lbs)
(from controlled experiments in our lab)

Max Runway: 3 m (9.8 ft.)

Schedule: Up to 5 or unlimited with a SwitchBot Hub³

Voice Control (SwitchBot Hub Required): Amazon Alexa,
Google Assistant, Siri Shortcuts, SmartThings, IFTTT,
and LINE CLOVA

1. SwitchBot Solar Panel is sold separately.

2. Battery life is tested under conditions of opening and closing a 8 kg (17 lbs) curtain on a 3-meter-long track once a day under 25 °C. Actual battery life may vary depending on different conditions.

3. SwitchBot Hub Mini is sold separately.

Please note: Use your device under room temperature only.

Warranty

We warrant to the original owner of the product that the product will be free from defects in materials and workmanship. Please note that this limited warranty does not cover:

- Products submitted beyond the original limited warranty period.
- Products on which repairs or modifying have been attempted.
- Products subjected to falls, extreme temperatures, water, or other operating conditions outside the product specifications.
- Damage due to natural disaster (including but not limited to lightning, flood, tornado, earthquake, or hurricane, etc.).
- Damage due to misuse, abuse, negligence or casualty (e.g. fire).
- Other damage that is not attributable to defects in the manufacture of product materials.

- Products purchased from unauthorized resellers.
- Consumable parts (including but not limited to batteries).
- Natural wear of the product.

Contact & Support

Setup and Troubleshooting: support.switch-bot.com

Support Email: support.switch-bot.com

Feedback: If you have any concerns or problems when using our products, please send feedback via our app through the Profile > Feedback page.

Find Out More

Please visit support.switch-bot.com for more details.



CE/UKCA Warning

To comply with RF exposure requirements, a minimum separation distance of 20 cm must be maintained between the user's body and the device, including the antenna. Use only the supplied or an approved antenna. This device is in compliance with the essential requirements and other relevant provisions of directive 2014/53/EU. All essential radio test suites have been carried out.

CE DOC

Hereby, Woan Technology (Shenzhen) Co., Ltd. declares that the radio equipment type W0701600 is in compliance with Directive 2014/53/EU. The full text of the EU declaration of conformity is available at the following internet address: support.switch-bot.com

UKCA DOC

Hereby, Woan Technology (Shenzhen) Co., Ltd. declares that the radio equipment type W0701600 is in compliance with UK Radio Equipment Regulations (SI 2017/1206). The full text of the UK declaration of conformity is available at the following internet address: support.switch-bot.com

This product can be used in EU member states.

Manufacturer: Woan Technology (Shenzhen) Co., Ltd.

Address: Room 1101, Qiancheng Commercial Center, No. 5 Haicheng Road, Mabu Community, Xixiang Subdistrict, Bao'an District, Shenzhen, Guangdong, P.R.China, 518100

Operation Frequency: Max RF output power

Bluetooth: 2402 MHz to 2480 MHz (-1.42 dBm)

FCC Warning

This device complies with Part 15 of the FCC Rules. Operation is subject to the following two conditions:

- (1) This device may not cause harmful interference.
- (2) This device must accept any interference received, including interference that may cause undesired operation.

NOTE: This equipment has been tested and found to comply with the limits for a Class B digital device, pursuant to part 15 of the FCC Rules. These limits are designed to provide reasonable protection against harmful interference in a residential installation.

This equipment generates uses and can radiate radio frequency energy and, if not installed and used in accordance with the instructions, may cause harmful interference to radio communications. However, there is no guarantee that interference will not occur in a particular installation. If this equipment does cause harmful interference to radio or television reception, which can be determined by turning the equipment off and on, the user is encouraged to try to correct the interference by one or more of the following measures:

- Reorient or relocate the receiving antenna.
- Increase the separation between the equipment and receiver.
- Connect the equipment into an outlet on a circuit different from that to which the receiver is connected.
- Consult the dealer or an experienced radio/TV technician for help.

NOTE: The manufacturer is not responsible for any radio or TV interference caused by unauthorized modifications to this equipment. Such modifications could void the user's authority to operate the equipment.

FCC Radiation Exposure Statement

This equipment complies with FCC radiation exposure limits set forth for an uncontrolled environment. This equipment should be installed and operated with minimum distance 20 cm between the radiator and your body.

IC Warning

This device complies with CAN ICES-003 (B)/NMB-003(B).

This device complies with Industry Canada licence-exempt RSS standard(s). Operation is subject to the following two conditions:

- (1) this device may not cause harmful interference.
- (2) this device must accept any interference received, including interference that may cause undesired operation.

Cet appareil est conforme à la norme CAN ICES-3 (B)/NMB-3 (B).

Le présent appareil est conforme aux CNR d'Industrie Canada applicables aux appareils radio exempts de licence. L'exploitation est autorisée aux deux conditions suivantes :

- (1) l'appareil ne doit pas produire de brouillage.
- (2) l'utilisateur de l'appareil doit accepter tout brouillage radioélectrique subi, même si le brouillage est susceptible d'en compromettre le fonctionnement.

IC Radiation Exposure Statement

This equipment complies with the IC radiation exposure limits established for uncontrolled environment. This equipment must be installed and operated at least 20 cm from a radiator or your body.

Cet équipement est conforme aux limites d'exposition aux rayonnements de la IC établies pour un environnement non contrôlé. Cet équipement doit être installé et fonctionner à au moins 20cm de distance d'un radiateur ou de votre corps.

KCC Warning

인증받은자의 상호: Woan Technology (Shenzhen) Co., Ltd.

제품명/모델명: 특정소출력 무선기기(무선데이터통신시스템용 무선기기) / W0701600

제조사 및 제조국가: Woan Technology (Shenzhen) Co., Ltd. /China

제조년월: 2021.12

인증번호: R-R-Woa-W0701601

이 장치는 보안성이 없으므로 통신보안에 위배되는 사항의 통신을 금지하며 운용 중

NCC Warning

取得審驗證明之低功率射頻器材，非經核准，公司、商號或使用者均不得擅自變更頻率、加大功率或變更原設計之特性及功能。

低功率射頻器材之使用不得影響飛航安全及干擾合法通信；經發現有干擾現象時，應立即停用，並改善至無干擾時方得繼續使用。

前述合法通信，指依電信管理法規定作業之無線電通信。

低功率射頻器材須忍受合法通信或工業、科學及醫療用電波輻射性電機設備之干擾。