

## Key Control

### Medeco's Approach

The security of any locking system is dependent upon two very important factors. The first is protection against attacks such as picking, drilling, bumping and forcing. The second is the ability to control duplication of existing keys. Historically, unauthorized key duplication has played a major role in compromising even the most sophisticated security systems. Anyone with even temporary access to original keys has no problem getting duplicates made for their own use if the keys and key blanks are not patent protected. Even stamping "Do Not Duplicate" on a key merely warns someone not to copy the key – it is not a promise of legal protection or enforcement. The only way to ensure that keys cannot be copied without the consent of the owner is a key system with patent protected keys.

### ***Medeco has counteracted the key control problem by doing three things:***

1. Medeco manufactures cylinders which use keys that must be made on special key cutting machines. These machines are capable of reproducing the angled cuts and critical tolerances necessary to produce a workable Medeco key, and are not found at general hardware stores.
2. Medeco sells its high quality, precision machined cylinders and locks only to security industry professionals. Every restricted Medeco key blank is custom coined and tracked by Medeco to identify it as an authorized key blank which protects against unauthorized copies.
3. Medeco invests heavily in research and development to establish strong patents and legal agreements to protect its locks and key blanks from unauthorized distribution or manufacture. In this way, Medeco can litigate to protect its rights and the security of its customers.

### A Key Control Program That's Right for You

Not every user has the same key control needs. That's why Medeco has designed different key control programs and different keyways to meet a wide range of security specifications and key access requirements.



#### Dealer/Service Center

This program offers instant local access to additional keys with protection from unauthorized copying. Consumers simply return to the security provider from which they purchased the locks. This security professional will have a signature card on file completed by the owner of the key system at the time the system was installed.



#### Card Programs

Authorized individuals are issued a card with embossed control data and a space for their signature. To obtain key duplicates, card holders present the card to any participating Medeco security professional. The data and signature will be verified and a key can then be issued. A card program is ideal for residential or businesses that need keys available nationwide.



#### End User Program

The End User program is for large facilities that have their own locksmith on staff and that want to produce Medeco keys themselves. This program offers individualized control over key duplication procedures.



#### Commercial Program

The Commercial Program is designed for users who use Medeco locks primarily for protection against picking, drilling and other forms of physical attack. Keys may be obtained from any Medeco locksmith without specific authorization.



#### Factory Program

Additional keys are only available from the Medeco factory and only with the proper signature.



#### eCylinder Systems

eCylinder systems allow the end user the ability to control their own system to electronically change access to any cylinder or key onsite and obtain audit information.

Visit our website at [www.medeco.com](http://www.medeco.com) for more information on all key programs.


## MEDECO® KEY CONTROL PROGRAM REFERENCE CHART


**M3** = Medeco<sup>3</sup> patent expiration date: 2021.


**BIA** = Biaxial patent expiration date: 2005.  
Upgrading to Medeco<sup>3</sup> recommended.


**ORG** = Original patent expiration date: 1985.  
Upgrading to Medeco<sup>3</sup> recommended.


 = Permission for copying keys is obtained by presenting a signed authorization card, which is matched to proper identification.

 = Permission for copying keys is provided by identification and signature verification, which must be presented to either the original locksmith provider or the facility manager.

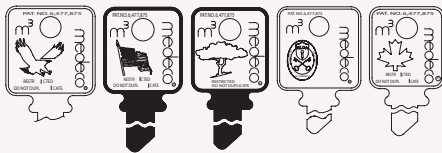
 = Keys can be cut on-site by dealers or end-users that are contracted to participate in the respective key program.

 = Keys are ordered locally and cut at a regional service center and then shipped back to the dealer.

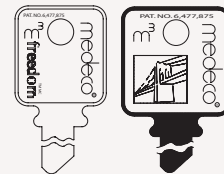
 = Keys are cut at the Medeco factory and shipped to dealer. Authorization is provided by signature verification.

 = Medeco recommended high security—UL 437 Listed, ultimate Grade 1 strength, and A156.5-2001 and A156.30 Level A Certified.

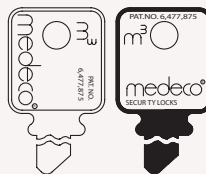
### MEDECO<sup>3</sup>® IS RECOMMENDED BY SECURITY PROFESSIONALS AS THE LEADER IN HIGH SECURITY AND PATENTED KEY CONTROL.



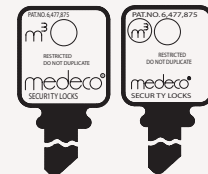
#### Medeco<sup>3</sup> Dealer



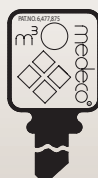
#### Freedom® / Gotham™



#### DND / NYC



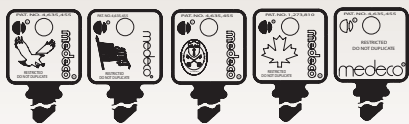
#### Medeco<sup>3</sup> End-User



#### Medeco<sup>3</sup> Factory Restricted

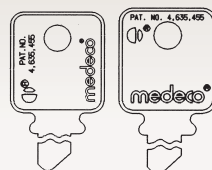


## BIAXIAL KEYS



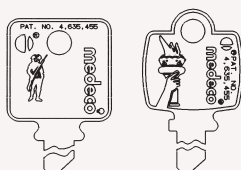
BiAxial® Dealer

BIA



Gold (GLD) / Platinum (NUK)

BIA



Patriot® / Liberty™

BIA



BiAxial® End-User

BIA



BiAxial® Factory Restricted

BIA



## ORIGINAL KEYS



Original® Dealer

ORG



SKY

ORG



Original® End-User

ORG



Original® Factory Restricted

ORG



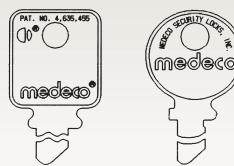
## COMMERCIAL KEYS



**Commercial**  
(Original & Biaxial Version)

ORG

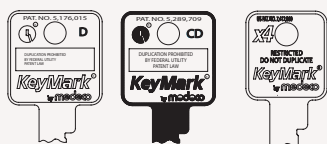
BIA



**OEM / Other**

If you have a Medeco key that isn't on this chart, it is highly likely that it is from an original equipment manufacturer using Medeco products. You will need to return to the original manufacturer of the product for duplicate keys

## MEDECO X4 KEYS

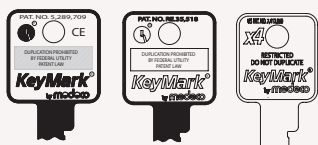


**Medeco X4 Dealer**

KM



X4



**Medeco® KM/X4 End-User**

KM



X4

X4

= Medeco X4 patent expiration date: 2027.

KM

= KeyMark patent expiration date: 2011.



= Permission for copying keys is obtained by presenting a signed authorization card, which is matched to proper identification.



= Permission for copying keys is provided by identification and signature verification, which must be presented to either the original locksmith provider or the facility manager.



= Keys can be cut on-site by dealers or end-users that are contracted to participate in the respective key program.



= Keys are ordered locally and cut at a regional service center and then shipped back to the dealer.



= Keys are cut at the Medeco factory and shipped to dealer. Authorization is provided by signature verification.



**Medeco KM Silver**

KM



**Medeco X4 Chrome**



X4