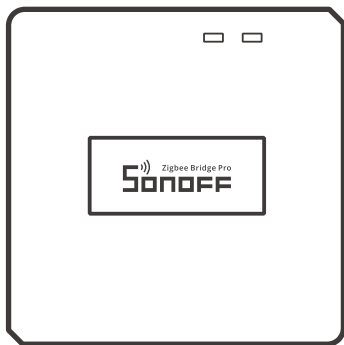




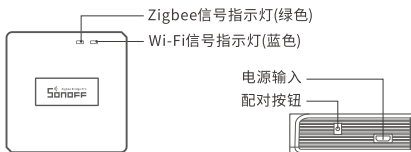
# ZB Bridge-P

User manual V1.1



Zigbee Bridge **Pro**

## 产品介绍



⚠ 设备重量<1Kg, 建议安装高度<2米。

## 信号指示灯状态说明

状态	状态说明
蓝灯两短一长闪烁	配网模式
蓝灯快闪	兼容模式(AP)
蓝灯常亮	设备在线
蓝灯快闪一下	未连接路由
蓝灯快闪二下	已连接上路由器, 但未连接到云端
蓝灯快闪三下	固件升级中
绿灯慢闪	搜索添加子设备中

## 产品特点

本设备是一款Zigbee多功能网关, 网关通过Wi-Fi转Zigbee的方式进行连接控制多种Zigbee设备, 实现远程控制该设备的开和关、设置智能定时和分享给您的家人一起控制等等。

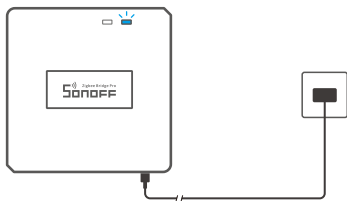
## 使用说明

### 1. 下载“易微联”APP



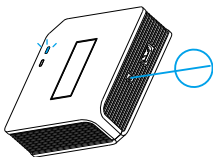
Android™ & iOS

## 2. 上电

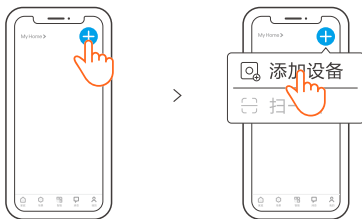


使用 MicroUSB 线给设备通电。通电后, 设备首次使用, 默认进入配网模式, Wi-Fi指示灯呈“两短一长闪烁”。

⚠ 三分钟内没有进行配网, 设备将退出配网模式。如需再次进入, 长按配对按钮5秒直到 Wi-Fi指示灯呈两短一长闪烁即可。

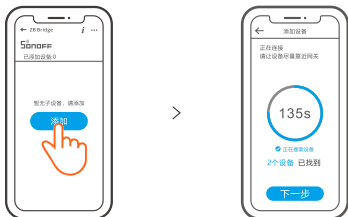


## 3. 添加Zigbee网关



点击“+”, 选择“添加设备”, 再根据 App 提示进行操作。

#### 4. 在 Zigbee 网关中添加 Zigbee 子设备



先把子设备设置进入配对状态，再点击网关界面中的“添加”，等待搜索完成添加子设备。

网关最多直连26个子设备，单个路由设备可拓展20个子设备，单个网关可添加的子设备总数上限为128个。

### 兼容模式配网

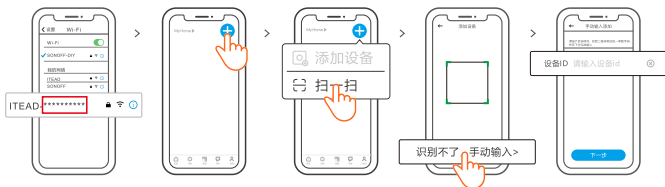
如使用配网失败，请使用“兼容模式”进行配对。

长按配对按钮5秒直到Wi-Fi指示灯呈“两短一长闪烁”状态，松开。再次长按配对按钮5秒直到Wi-Fi指示灯呈“快闪”状态，此时设备进入兼容配网模式。

#### Android设备:

在app界面，点击“+”，选择“兼容模式”，请按照app提示进行操作。

#### iOS设备:



- ① 设备在兼容配网模式下，在手机Wi-Fi列表找到账号为:ITEAD-\*\*\*\*\*，请记录好 Wi-Fi 账号后10位的设备ID。
- ② 回到“易微联”app，点击“+”，选择“扫一扫”，再点击屏幕下方“手动输入”最后输入记录好的设备ID号，点击下一步等待添加完成。

## 产品参数

型号	ZB Bridge-P
输入	5V---1A
无线连接	Wi-Fi IEEE 802.11 b/g/n 2.4GHz, Zigbee 3.0
App支持系统	Android & iOS
工作温度	-10°C~40°C
外壳材料	PC V0
产品规格	62x62x20mm

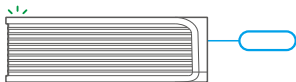
## 取消报警声

网关可通过以下任意方法静音：

1. 用卡针短按网关配对按钮。
2. 在eWelink App网关页面点击红色喇叭图标。
3. 通过场景联动设置使网关静音。

## 恢复出厂设置

1. 删除Zigbee子设备



长按配对按钮10秒直到Zigbee信号指示灯“闪烁两下”，即可删除所有已配对的ZigBee子设备。删除单个Zigbee子设备，可在APP端删除。

2. 删除网关

在eWeLink App 端网关设置界面“删除设备”，设备即恢复出厂设置。

## 常见问题

Wi-Fi设备与 eWeLink APP 配对失败。

1. 确保设备处于配对模式。三分钟内没进行配网,设备将自动退出配对模式。
2. 请开启定位服务并允许定位权限。在选择 Wi-Fi 网络之前,请开启定位服务并允许定位权限。位置信息权限用于获取 Wi-Fi 列表信息。如果单击禁用,您将无法添加设备。
3. 确保您的 Wi-Fi 网络为 2.4GHz 频段。
4. 确保您输入了正确的 Wi-Fi SSID 和密码,没有包含特殊字符。密码错误是配对失败的一个非常常见的原因。
5. 配对时设备应靠近路由器,以保证良好的传输信号条件。

Wi-Fi 设备“离线”问题,请通过 Wi-Fi LED 指示灯状态检查以下问题:

LED 指示灯每 2 秒闪烁一次,表示您无法连接到路由器。

1. 可能您输入了错误的 Wi-Fi SSID 和密码。
2. 确保您的 Wi-Fi SSID 和密码不包含特殊字符,例如希伯来语、阿拉伯语字符,我们的系统无法识别这些字符,因此无法连接到 Wi-Fi。
3. 可能你的路由器承载能力较低。
4. 可能是 Wi-Fi 强度较弱。您的路由器距离您的设备太远,或者路由器和设备之间可能存在阻碍信号传输的障碍物。
5. 确保设备的 MAC 不在您的 MAC 管理黑名单中。

LED 指示灯重复闪烁两次表示您无法连接到服务器。

1. 确保互联网连接正常。您可以使用您的手机或PC连接互联网,如果无法访问,请检查互联网连接的可用性。
2. 可能你的路由器承载能力低。连接到路由器的设备数量超过其最大值。请确认您的路由器可以携带的最大设备数量。如果超过,请删除一些设备或换个更大的路由器再试。
3. 请联系您的 ISP 并确认我们的服务器地址没有被屏蔽:  
cn-disp.coolkit.cc (中国大陆)  
as-disp.coolkit.cc (亚洲除中国外)  
eu-disp.coolkit.cc (在欧盟)  
us-disp.coolkit.cc (美国)

如果以上方法均无法解决此问题,请通过 eWeLink APP 上的帮助&反馈提交您的请求。

## 产品中有害物质的名称及含量

部件名称	有害物质					
	铅 (Pb)	汞 (Hg)	镉 (Cd)	六价铬 (Cr(VI))	多溴联苯 (PBB)	多溴二苯醚 (PBDE)
塑料件	o	o	o	o	o	o
电子元器件	x	o	o	o	o	o
包装盒	o	o	o	o	o	o
PCB板	o	o	o	o	o	o
五金件	o	o	o	o	o	o

本表格依据SJ/T 11364 的规定编制：

o：表示该有害物质在该部件所有均质材料中的含量均在GB/T 26572规定的限量要求以下；

x：表示该有害物质至少在该部件的某一均质材料中的含量超出GB/T 26572规定的限量要求。

执行标准：GB 4943.1

## 微功率设备使用说明

(一) 本产品使用的 Zigbee 技术符合“微功率短距离无线电发射设备目录和技术要求”中通用微功率设备F类设备的技术要求，用于数据传输应用。采用一体化天线，控制、调整及开关等使用方法请参考产品说明书中相关内容；

(二) 不得擅自改变使用场景或使用条件、扩大发射频率范围、加大发射功率（包括额外加装射频功率放大器），不得擅自更改发射天线；

(三) 不得对其他合法的无线电台（站）产生有害干扰，也不得提出免受有害干扰保护；

(四) 应当承受辐射射频能量的工业、科学及医疗（ISM）应用设备的干扰或其他合法的无线电台（站）干扰；

(五) 如对其他合法的无线电台（站）产生有害干扰时，应立即停止使用，并采取措施消除干扰后方可继续使用；

(六) 在航空器内和依据法律法规、国家有关规定、标准划设的射电天文台、气象雷达站、卫星地球站（含测控、测距、接收、导航站）等军民用无线电台（站）、机场等的电磁环境保护区域内使用微功率设备，应当遵守电磁环境保护及相关行业主管部门的规定；

(七) 禁止在以机场跑道中心点为圆心、半径5000米的区域内使用各类模型遥控器；

(八) 微功率设备使用温度为-10℃~40℃，供电为5V== 1A。



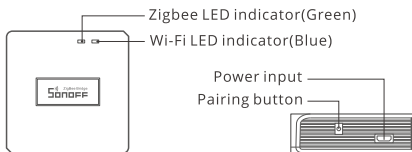
注意：

本产品含纽扣电池

- 不要吞咽电池，化学灼伤危险
- 本产品包含纽扣电池。如果吞食纽扣电池，在2小时内就可能导致严重的内部灼伤并可能导致死亡。
- 让儿童远离新的和使用过的电池
- 如果使用错误型号的电池替换会有着火或者爆炸等安全失效的危险
- 如果电池仓未安全闭合，停止使用该产品并使之远离儿童
- 如果你认为电池可能已被吞食或放置在身体的任何部位内，立即寻求医疗救助
- 如果使用错误型号的电池替换会有着火或者爆炸等安全失效的危险
- 将电池投入火中或者加热炉中，或对电池进行机械挤压或切割处理可能导致爆炸
- 电池放置在极高温环境中，可能导致爆炸或泄漏可燃液体或气体
- 电池放置在极低气压，可能导致爆炸或泄漏可燃液体或气体
- 若出现严重膨胀，切勿继续使用
- 浸水后禁止使用



## Product Introduction



⚠ The device weight is less than 1 kg. The installation height of less than 2 m is recommended.

## LED indicator status instruction

LED indicator status	Status instruction
Blue LED flashes (two short and one long)	Pairing Mode
Blue LED flashes quickly	Compatible Pairing Mode (AP)
Blue LED keeps on	Device is Online
Blue LED flashes quickly once	Fail to Connect to Router
Blue LED flashes quickly twice	Connected to Router but Fail to Connect to Serve
Blue LED flashes quickly three times	Firmware Updating
Green LED flashes slowly	Searching and adding sub-devices

## Features

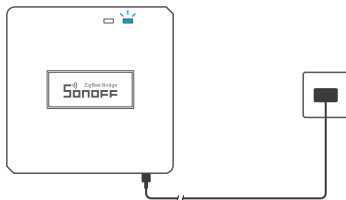
This is a Zigbee Bridge that allows you to control a variety of Zigbee devices by transforming Wi-Fi into Zigbee. You can remotely turn on/off or schedule on/off connected Zigbee devices, or share it with your family to control them together.

## Operating Instruction

1. Download “eWeLink”App

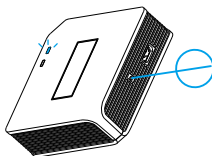


## 2. Power on

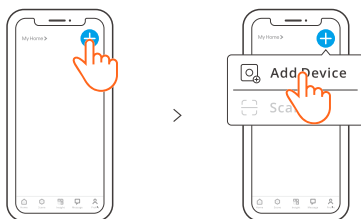


Power the device through Micro USB cable. After powering on, the device will enter the Pairing Mode during the first use. The Wi-Fi LED indicator changes in a cycle of two short and one long flash and release.

⚠ The device will exit the Pairing Mode if not paired within 3mins. If you want to enter this mode, please long press pairing button for about 5s until the Wi-Fi LED indicator changes in a cycle of two short and one long flash and release.

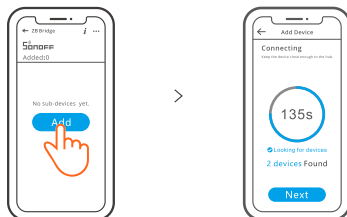


## 3. Add Zigbee Bridge



Tap "+" and select "Add Device", then operate following the prompt on the App.

#### 4. Add Zigbee sub-devices to Zigbee Bridge



Make the sub-devices enter the pairing mode, tap “Add” icon on the Zigbee Bridge interface, then wait it to find the sub-devices and pair.

ZB Bridge-P can connect 26 sub-devices directly, one router-device can expand to connect 20 sub-devices, one bridge can connect up to 128 sub-devices.

## Compatible Pairing Mode

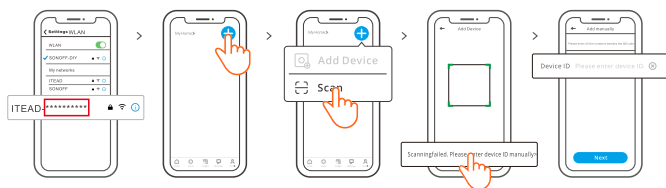
If you fail to enter Pairing Mode, please try “Compatible Pairing Mode” to pair.

Long press Pairing button for 5s until the Wi-Fi LED indicator changes in a cycle of two short flashes and one long flash and release. Long press Pairing button for 5s again until the Wi-Fi LED indicator flashes quickly. Then, the device enters Compatible Pairing Mode.

### For Android system:

Tap “+” and select “Compatible Pairing Mode” on app, Please follow the app prompts.

### For iOS system:



- ① When the device is in the compatible mode, please record the device ID ITEAD-\*\*\*\*\*, which can be found in the Wi-Fi list of the mobile phone.
- ② Return to the eWeLink app, tap “+”, select “Scan”, then tap “Manual Input” at the bottom of the screen. Enter the recorded device ID and tap “Next” to complete the addition.

## Specifications

Model	ZB Bridge-P
Input	5V---1A
Wireless connections	Wi-Fi IEEE 802.11 b/g/n 2.4GHz, Zigbee 3.0
App operating systems	Android & iOS
Working temperature	-10°C~40°C
Casing Material	PC V0
Product Size	62x62x20mm

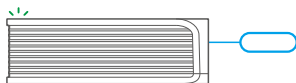
## Cancel the alarm sounds

ZB Bridge-P can be muted through following any method:

1. Press the gateway pairing button with a pin card.
2. Click the red "speaker" icon on the gateway interface of eWeLink App.
3. Mute the gateway through scene control settings.

## Factory Reset

1. Delete Zigbee sub-devices



Long press the pairing button for 10s until the Zigbee LED indicator "flashes twice", then all the paired Zigbee sub-devices have been deleted. If you want to delete one of the Zigbee sub-devices, delete it on the App.

2. Delete the Bridge

Tap "Delete device" in the setting interface of the Bridge on the App, the device will be reset to factory setting.

## Common Problems

### Fail to pair Wi-Fi devices to eWeLink APP

1. Make sure the device is in pairing mode. After three minutes of unsuccessful pairing, the device will automatically exit pairing mode.
2. Please turn on location services and allow location permission. Before choosing the Wi-Fi network, location services should be turned on and location permission should be allowed. Location information permission is used to obtain Wi-Fi list information. If you click Disable, you will not be able to add devices.
3. Make sure your Wi-Fi network runs on the 2.4GHz band.
4. Make sure you entered a correct Wi-Fi SSID and password, no special characters contained. Wrong password is a very common reason for pairing failure.
5. The device shall get close to the router for a good transmission signal condition while pairing.

### Wi-Fi devices "Offline" issue, Please check the following problems by the Wi-Fi LED indicator status:

The LED indicator blinks once every 2s means you fail to connect to the router.

1. Maybe you entered the wrong Wi-Fi SSID and password.
2. Make sure that your Wi-Fi SSID and password don't contain special characters, for example, the Hebrew, Arabic characters, our system can't recognize these characters and then fail to connect to the Wi-Fi.
3. Maybe your router has a lower carrying capacity.
4. Maybe the Wi-Fi strength is weak. Your router is too far away from your device, or there may be some obstacle between the router and device which blocks the signal transmission.
5. Be sure that the MAC of the device is not on the blacklist of your MAC management.

### The LED indicator flashes twice on repeated means you fail to connect to the server.

1. Make sure the Internet connection is working. You can use your phone or PC to connect to the Internet, and if it fails to access, please check the availability of the Internet connection.
2. Maybe your router has a low carrying capacity. The number of devices connected to the router exceeds its maximum value. Please confirm the maximum number of devices that your router can carry. If it exceeds, please delete some devices or get a larger router and try again.
3. Please contact your ISP and confirm our server address is not shielded:  
cn-disp.coolkit.cc (China Mainland)  
as-disp.coolkit.cc (in Asia except China)  
eu-disp.coolkit.cc (in EU)  
us-disp.coolkit.cc (in US)

If none of the above methods solved this problem, please submit your request via help&feedback on the eWeLink APP.

## FCC compliance statement

Changes or modifications not expressly approved by the party responsible for compliance could avoid the user's authority to operate the equipment.

This device complies with part 15 of the FCC Rules. Operation is subject to the following two conditions: (1) This device may not cause harmful interference, and (2) this device must accept any interference received, including interference that may cause undesired operation.

### **FCC Radiation Exposure Statement:**

This equipment complies with FCC radiation exposure limits set forth for an uncontrolled environment. This equipment should be installed and operated with minimum distance 20cm between the radiator & your body. This transmitter must not be co-located or operating in conjunction with any other antenna or transmitter.

### **Note:**

This equipment has been tested and found to comply with the limits for a Class B digital device, pursuant to part 15 of the FCC Rules. These limits are designed to provide reasonable protection against harmful interference in a residential installation. This equipment generates, uses and can radiate radio frequency energy and, if not installed and used in accordance with the instructions, may cause harmful interference to radio communications. However, there is no guarantee that interference will not occur in a particular installation. If this equipment does cause harmful interference to radio or television reception, which can be determined by turning the equipment off and on, the user is encouraged to try to correct the interference by one or more of the following measures:

- Reorient or relocate the receiving antenna.
- Increase the separation between the equipment and receiver.
- Connect the equipment into an outlet on a circuit different from that to which the receiver is connected.
- Consult the dealer or an experienced radio/TV technician for help.

## ISED Notice

This device contains licence-exempt transmitter(s)/receiver(s) that comply with Innovation, Science and Economic Development Canada's licence-exempt RSS(s). Operation is subject to the following two conditions:

- (1) This device may not cause interference.
- (2) This device must accept any interference, including interference that may cause undesired operation of the device.

This Class B digital apparatus complies with Canadian ICES-003. This device complies with RSS-247 of Industry Canada. Operation is subject to the condition that this device does not cause harmful interference.

L'émetteur/récepteur exempt de licence contenu dans le présent appareil est conforme aux CNR d'Innovation, Sciences et Développement économique Canada applicables aux appareils radio exempts de licence.

L'exploitation est autorisée aux deux conditions suivantes :

- (1) L'appareil ne doit pas produire de brouillage;
- (2) L'appareil doit accepter tout brouillage radioélectrique subi, même si le brouillage est susceptible d'en compromettre le fonctionnement.

Cet appareil numérique de la Classe B conforme à la norme NMB-003 du Canada.

Cet appareil est conforme à la norme RSS - 247 d'Industrie Canada.

Le fonctionnement est soumis à la condition que cet appareil ne provoque pas d'interférences nuisibles.

### ISED Radiation Exposure Statement

This equipment complies with IC radiation exposure limits set forth for an uncontrolled environment.

This equipment should be installed and operated with minimum distance of 20 cm between the radiator and your body.

This transmitter must not be co-located or operating in conjunction with any other antenna or transmitter.

Cet équipement est conforme aux limites d'exposition aux rayonnements de la IC établies pour un environnement non contrôlé.

Cet équipement doit être installé et fonctionner à au moins 20cm de distance d'un radiateur ou de votre corps.

Cet émetteur ne doit pas être co-localisé ou fonctionner en conjonction avec une autre antenne ou un autre émetteur.

## EU Declaration of Conformity

Hereby, Shenzhen Sonoff Technologies Co., Ltd. declares that the radio equipment type ZB Bridge-P is in compliance with Directive 2014/53/EU. The full text of the EU declaration of conformity is available at the following internet address:

<https://sonoff.tech/compliance/>

## WEEE Disposal and Recycling Information



All products bearing this symbol are waste electrical and electronic equipment (WEEE as in directive 2012/19/EU) which should not be mixed with unsorted household waste. Instead, you should protect human health and the environment by handing over your waste equipment to a designated collection point for the recycling of waste electrical and electronic equipment, appointed by the government or local authorities. Correct disposal and recycling will help prevent potential negative consequences to the environment and human health. Please contact the installer or local authorities for more information about the location as well as terms and conditions of such collection points.

## Warning

Under normal use of condition, this equipment should be kept a separation distance of at least 20 cm between the antenna and the body of the user.

Dans des conditions normales d'utilisation, cet équipement doit être maintenu à une distance d'au moins 20 cm entre l'antenne et le corps de l'utilisateur.

## For CE Frequency

### EU Operating Frequency Range

Wi-Fi: 802.11 b/g/n20: 2412–2472 MHz, 802.11 n40: 2422–2462 MHz

Zigbee : 2405–2480 MHz

### EU Output Power

Wi-Fi 2.4G≤20dBm

Zigbee≤10dBm

Scatola	Manuale
PAP 21	PAP 22
Carta	Carta
RACCOLTA	
Verifica le disposizioni del tuo Comune. Separa le componenti e conferiscile in modo corretto.	





## WARNING

- Do not ingest battery, Chemical Burn Hazard.
- This product contains a coin / button cell battery. If the coin / button cell battery is swallowed, it can cause severe internal burns in just 2 hours and can lead to death.
- Keep new and used batteries away from children.
- If the battery compartment does not close securely, stop using the product and keep it away from children.
- If you think batteries might have been swallowed or placed inside any part of the body, seek immediate medical attention.
- Replacement of a battery with an incorrect type that can defeat a safeguard (for example, in the case of some lithium battery types).
- Disposal of a battery into fire or a hot oven, or mechanically crushing or cutting of a battery, that can result in an explosion.
- Leaving a battery in an extremely high temperature surrounding environment that can result in an explosion or the leakage of flammable liquid or gas.
- A battery subjected to extremely low air pressure that may result in an explosion or the leakage of flammable liquid or gas.

## UL 4200A compliance statement

### WARNING

- **INGESTION HAZARD:** This product contains a button cell or coin battery.
- **DEATH** or serious injury can occur if ingested.
- A swallowed button cell or coin battery can cause **Internal Chemical Burns** in as little as **2 hours**.
- KEEP new and used batteries **OUT OF REACH of CHILDREN**.
- **Seek immediate medical attention** if a battery is suspected to be swallowed or inserted inside any part of the body.



- Remove and immediately recycle or dispose of used batteries according to local regulations and keep away from children. Do NOT dispose of batteries in household trash or incinerate.
- Even used batteries may cause severe injury or death.
- Call a local poison control center for treatment information.
- Compatible battery type: ML621-TZ1
- Nominal battery voltage: 3V
- Non-rechargeable batteries are not to be recharged.
- Do not force discharge, recharge, disassemble, heat above 60°C or incinerate. Doing so may result in injury due to venting, leakage or explosion resulting in chemical burns.
- The product contains non-replaceable batteries.



## Shenzhen Sonoff Technologies Co., Ltd.

Address: 3F & 6F, Bldg A, No. 663, Bulong Rd, Shenzhen, Guangdong, China

Website: [sonoff.tech](http://sonoff.tech)

ZIP code: 518000

Service email: [support@itead.cc](mailto:support@itead.cc)

MADE IN CHINA

