



## USER MANUAL

### 3 IN 1 FOLDABLE WIRELESS CHARGER

P.S.: **Samsung** & **Apple** (General Instructions)

## Product Specification

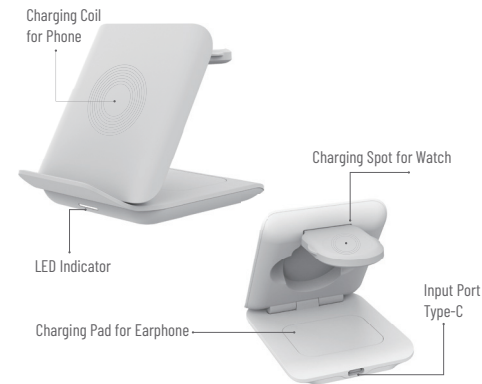
### Model No.: DT-X7T

Special designed for Galaxy Z Flip series, which is compatible with all Qi enabled devices, as well as for earbuds(3W) and watch(3W).

### SPECIFICATIONS:

Output: 15W Max+3W+3W  
Input: 5V/3A, 9V/2A  
Interface: Type C  
Dimension: 73.44×101.03×23.60mm  
Charging Distance: ≤5mm  
Material: PC+ABS+Silicone

## Product Show

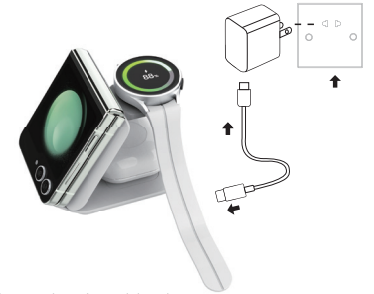


### Package Contents:

1 pcs × Wireless Charger  
1 pcs × User Manual  
1 pcs × Adaptor  
1 pcs × Charging Cable

## How to Work

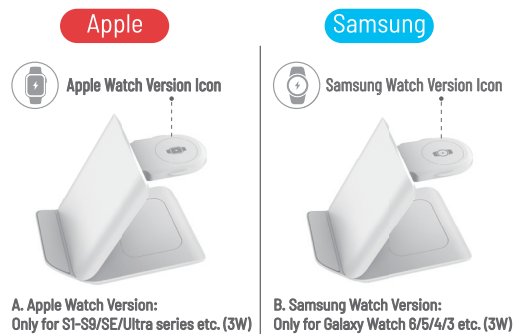
Plug a power adaptor to a wall outlet, and connect the type-c cable to the power adaptor, then place your phone or watch and earphone on the charging plate to start charging.



### Indicator light identification:

|               |                                     |
|---------------|-------------------------------------|
| Power on      | White light for 3s                  |
| Charging      | White light is on                   |
| Full Charging | White light is on                   |
| Abnormal      | White light flash (1 time/1 second) |

### How to identify Samsung Watch or Apple Watch versions?



A. Apple Watch Version:  
Only for S1-S9/SE/Ultra series etc. (3W)

B. Samsung Watch Version:  
Only for Galaxy Watch 6/5/4/3 etc. (3W)

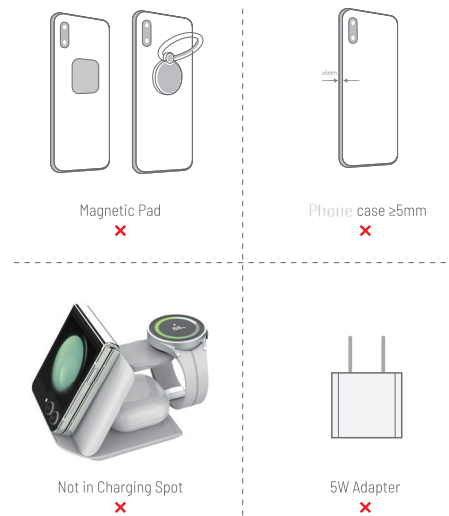
### Notice:

Samsung watch charger does not support charging Apple watch  
Apple watch charger does not support charging Samsung watch

### Charging modes for reference.



### Charging Cautions.



### Product specific safety information

Place the device on flat surface.  
Keep the device dry.  
Do not attempt to open the device.  
Do not place bank cards near the device.

Enjoy Your Wireless Charging!

Made in China



FCC ID: 2AVI4-DT-X7T

## FCC Warning

This device complies with part 15 of the FCC Rules. Operation is subject to the following two conditions: (1) This device may not cause harmful interference, and (2) this device must accept any interference received, including interference that may cause undesired operation.

Any Changes or modifications not expressly approved by the party responsible for compliance could void the user's authority to operate the equipment.

**Note:** This equipment has been tested and found to comply with the limits for a Class B digital device, pursuant to part 15 of the FCC Rules. These limits are designed to provide reasonable protection against harmful interference in a residential installation. This equipment generates uses and can radiate radio frequency energy and, if not installed and used in accordance with the instructions, may cause harmful interference to radio communications. However, there is no guarantee that interference will not occur in a particular installation. If this equipment does cause harmful interference to radio or television reception, which can be determined by turning the equipment off and on, the user is encouraged to try to correct the interference by one or more of the following measures:

- Reorient or relocate the receiving antenna.
- Increase the separation between the equipment and receiver.
- Connect the equipment into an outlet on a circuit different from that to which the receiver is connected.
- Consult the dealer or an experienced radio/TV technician for help.

The FCC certification of this device refers to RF exposure testing performed in typical operating conditions, where a person is no closer than 20 centimeters from the device surface at all times, except for non-repetitive patterns with transient time intervals in the order of a second. Only in the stated conditions, the device is shown to fully comply with the FCC RF Exposure requirements of KDB 447498.