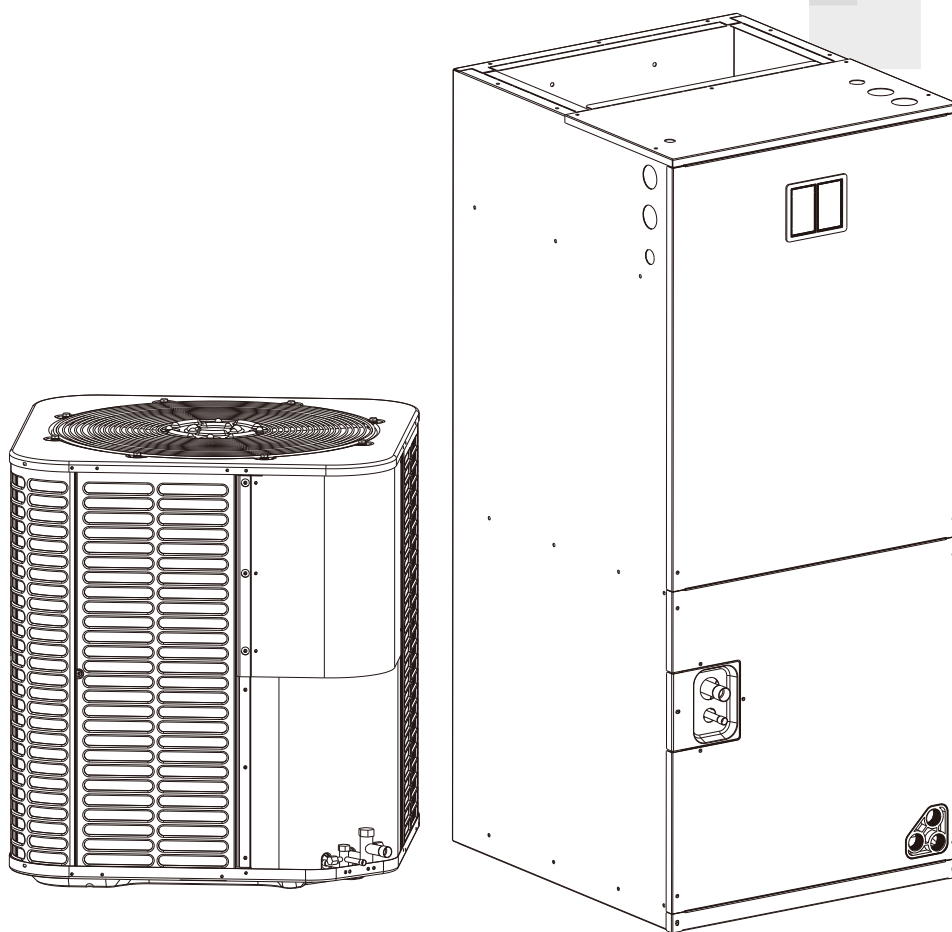




14SEER Condensing & Air Handler

Troubleshooting Manual

Model No.: 14S-EHVC*W2V / 14S-EHVC*W2H
14S-EHVC24W2VS / 14S-EHVC24W2H
14S-EHVC30W2VS / 14S-EHVC30W2H
14S-EHVVH*W2V / 14S-EHVVH*W2H



Thank you very much for purchasing our air conditioner. Please read this owner's manual carefully before using your air conditioner.

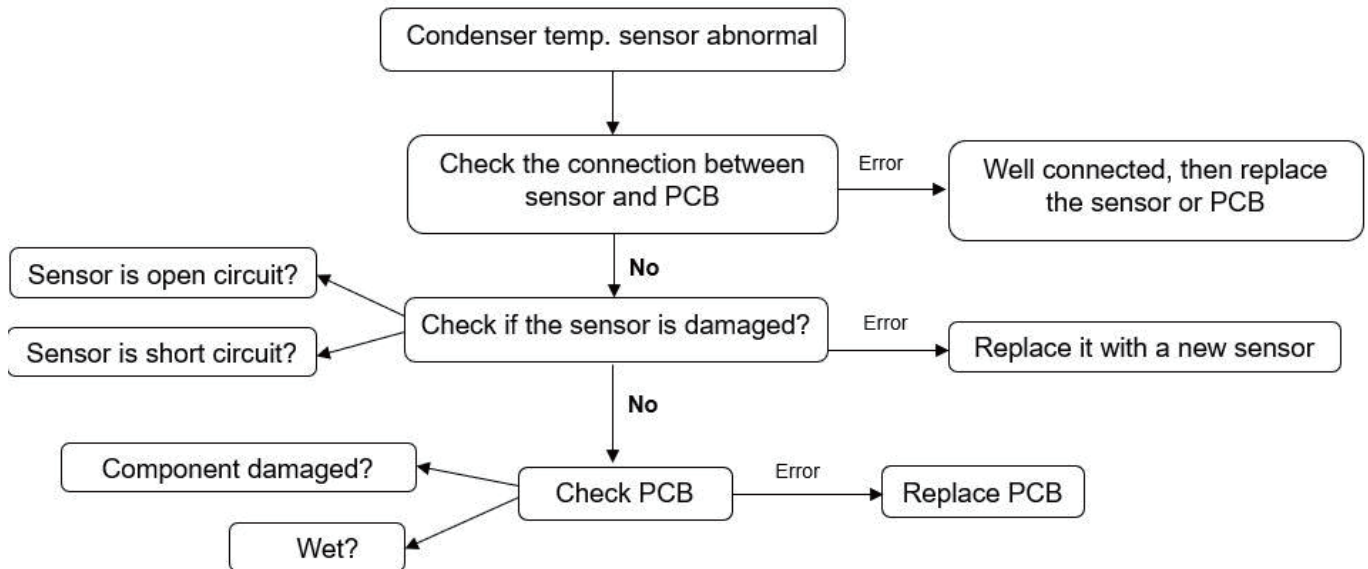
THANK YOU

Congratulations on your purchase and welcome to the **KEPLERX** Family. Your new **KEPLERX** Air Conditioner combines high-efficiency operation with portable convenience. By following the operating and care instructions in this manual, your air conditioner will provide you with many years of reliable service. Please visit our website **www.keplerx.net** For any questions or Technical Support, please contact us by mail **info@keplerx.net** or by phone **1-866-466-3451**.

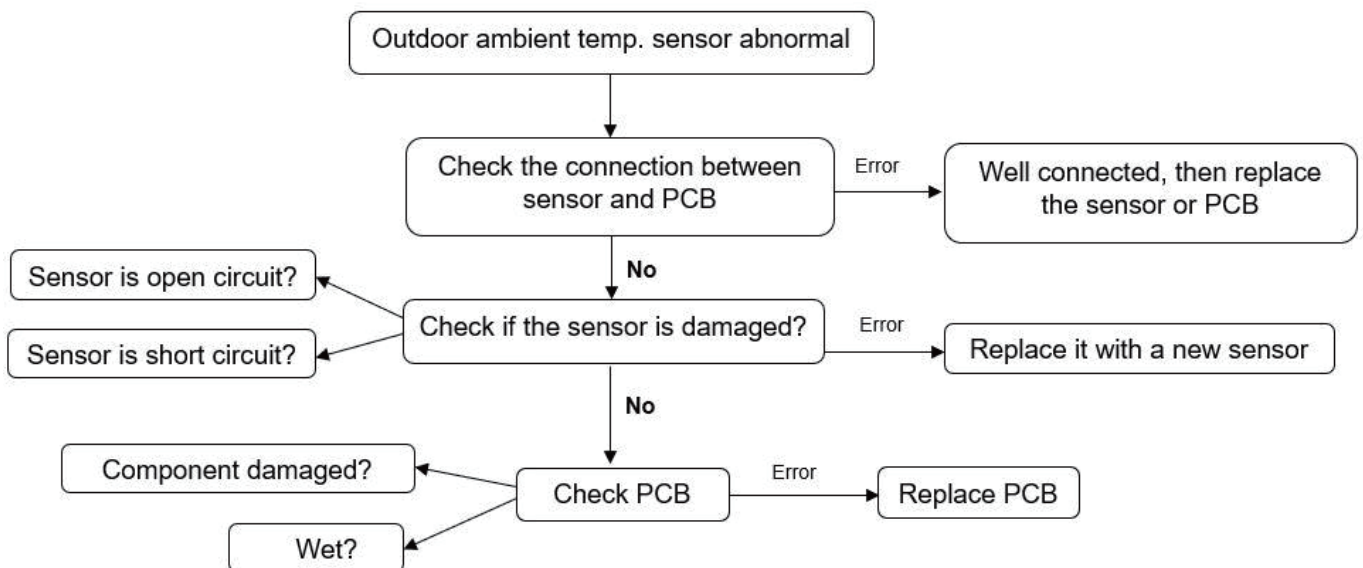
TROUBLESHOOTING

Flow chart of troubleshooting

1. T3 Condenser Temperature sensor error

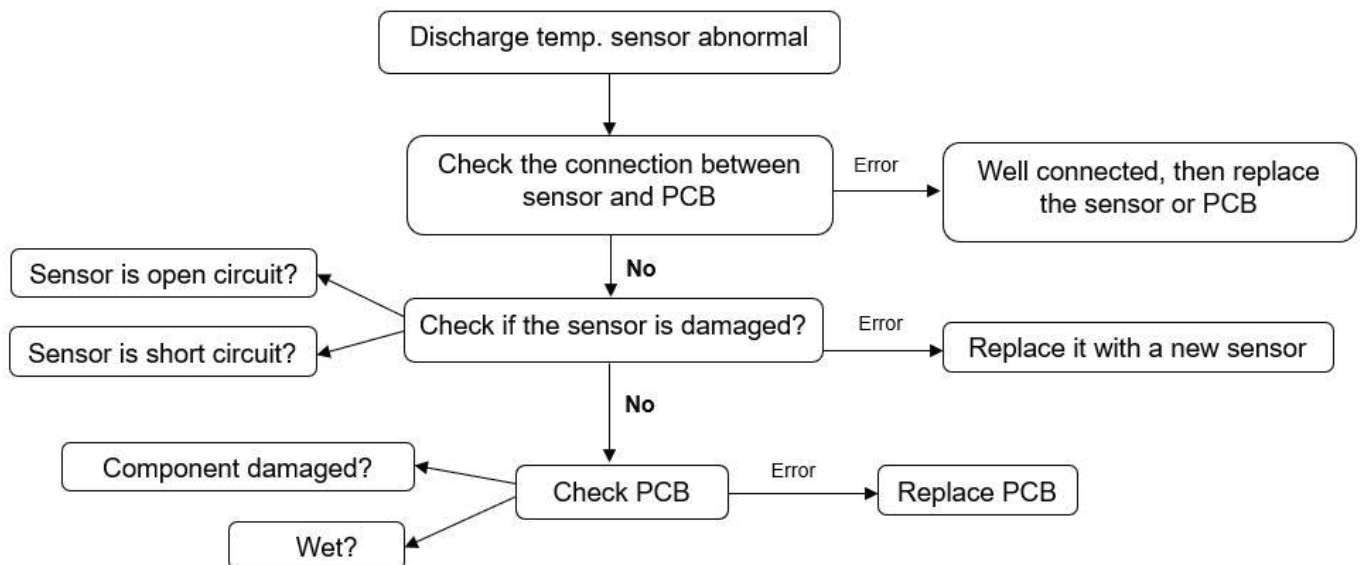


2. T4 Outdoor Ambient Temperature sensor error

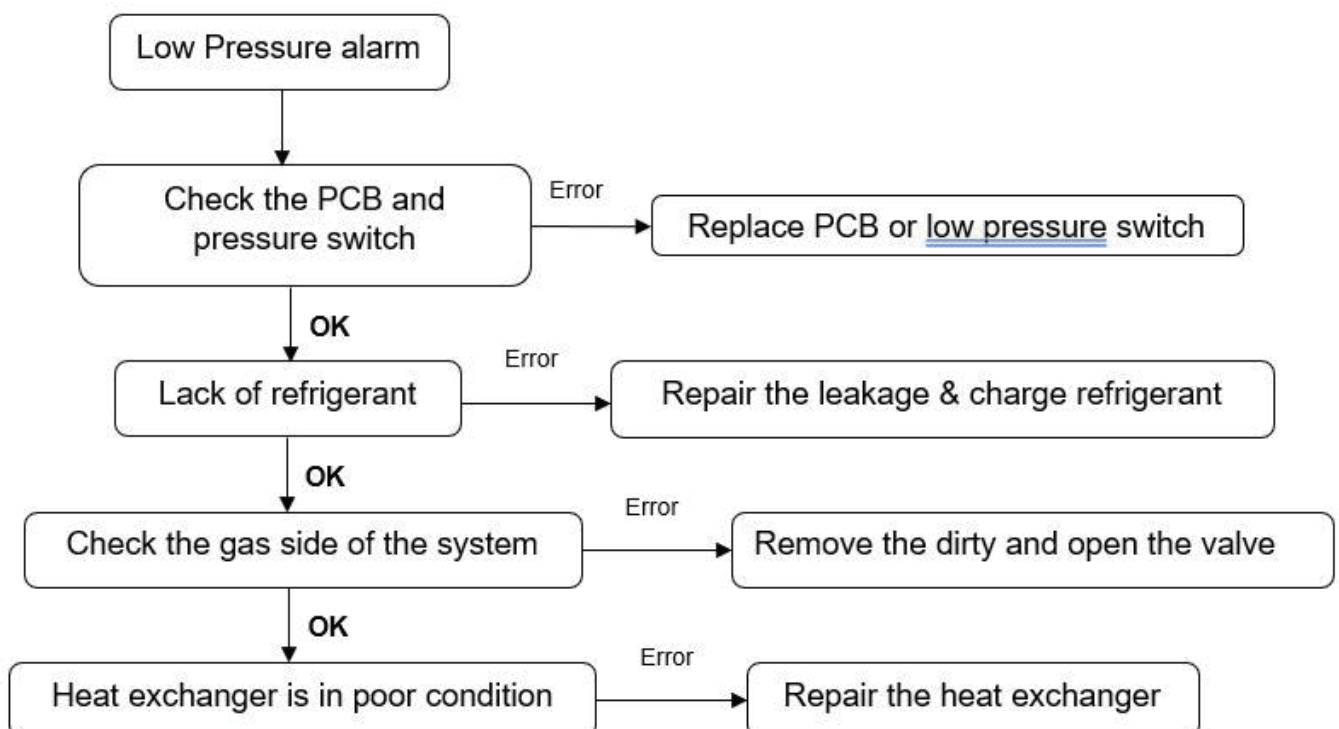


TROUBLESHOOTING

3. T5 Discharge Temperature sensor error

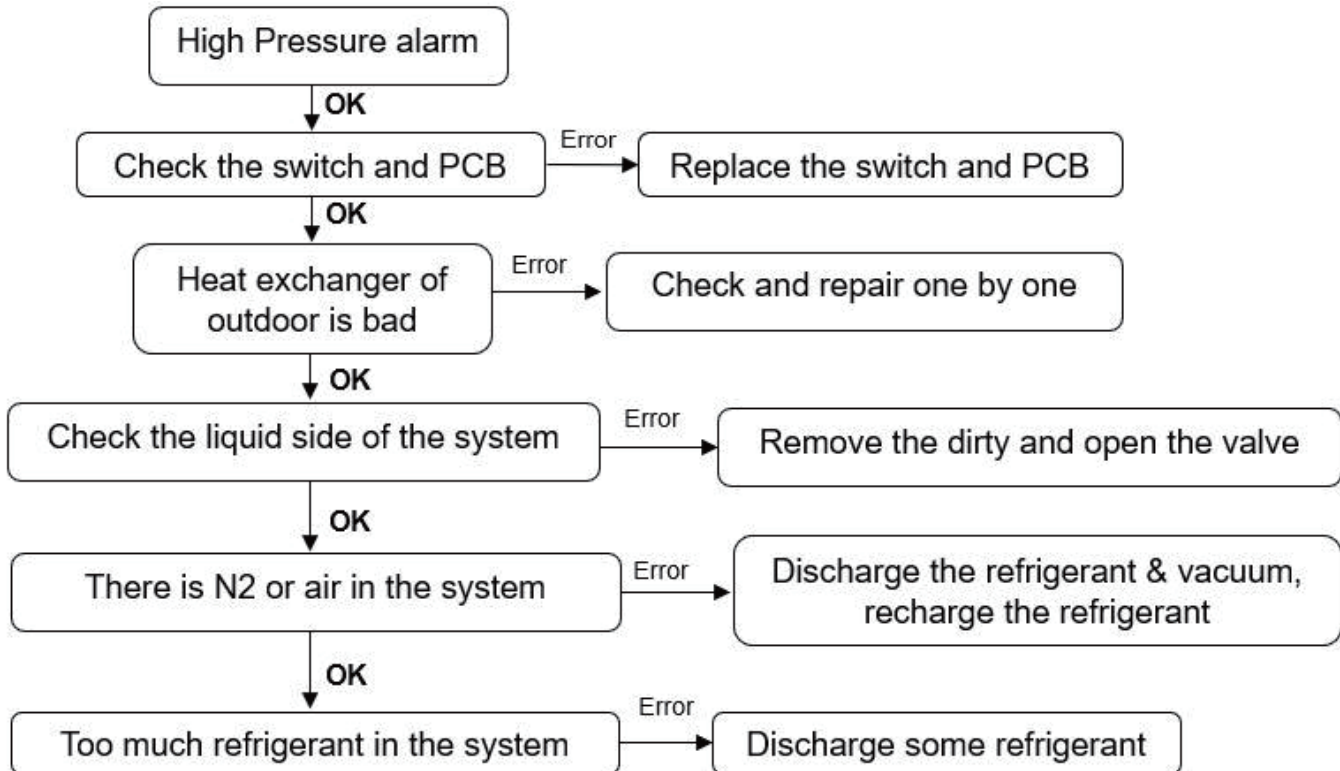


4. Low Pressure alarm

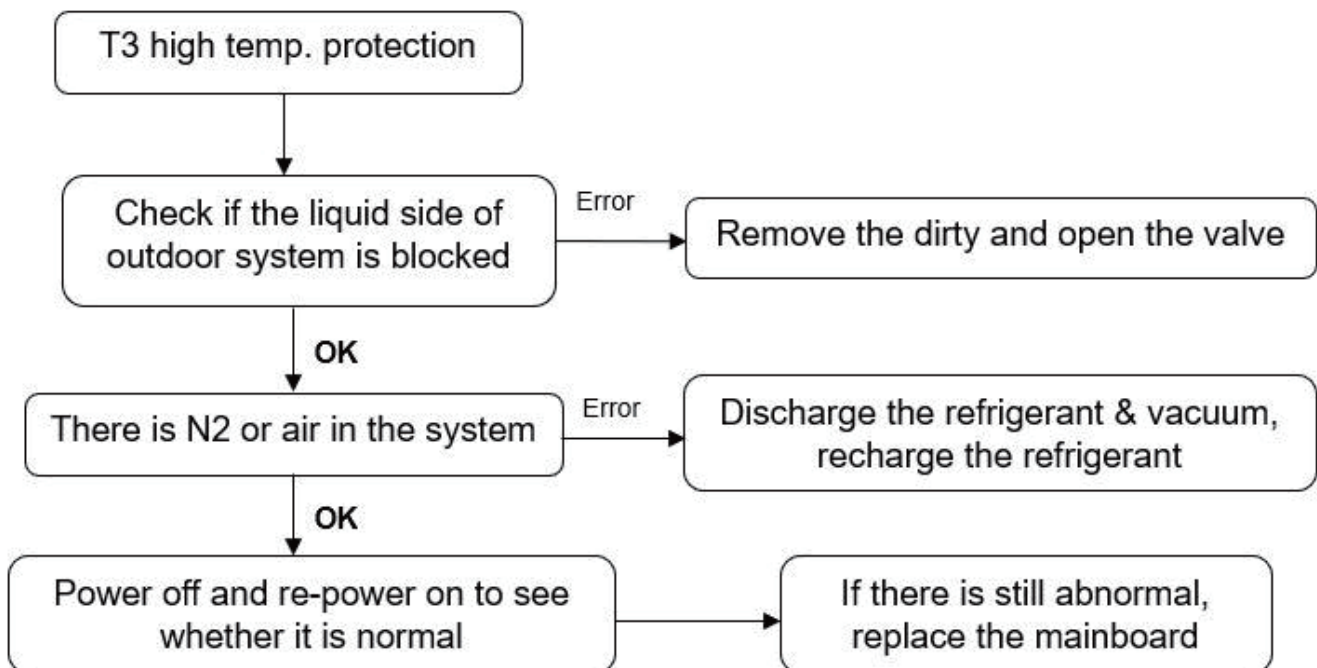


TROUBLESHOOTING

5. High Pressure alarm

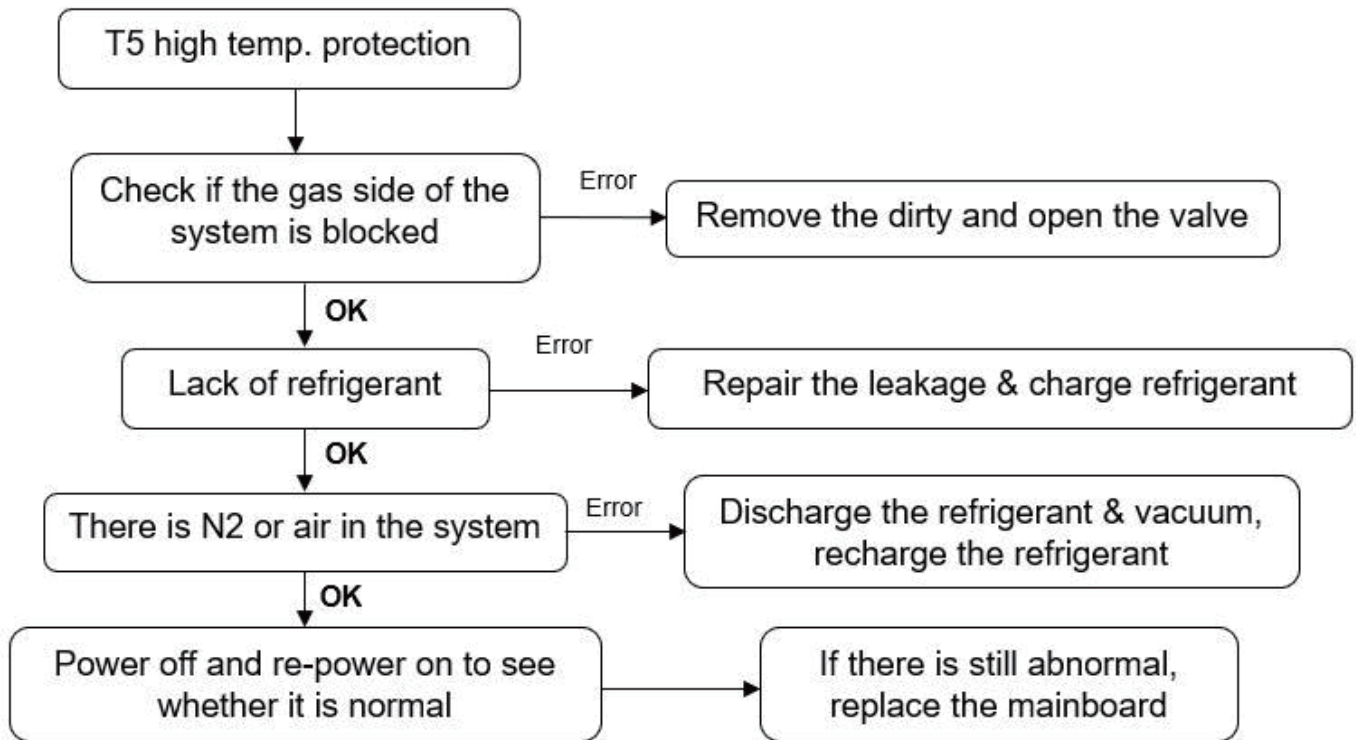


6. T3 high temperature protection



TROUBLESHOOTING

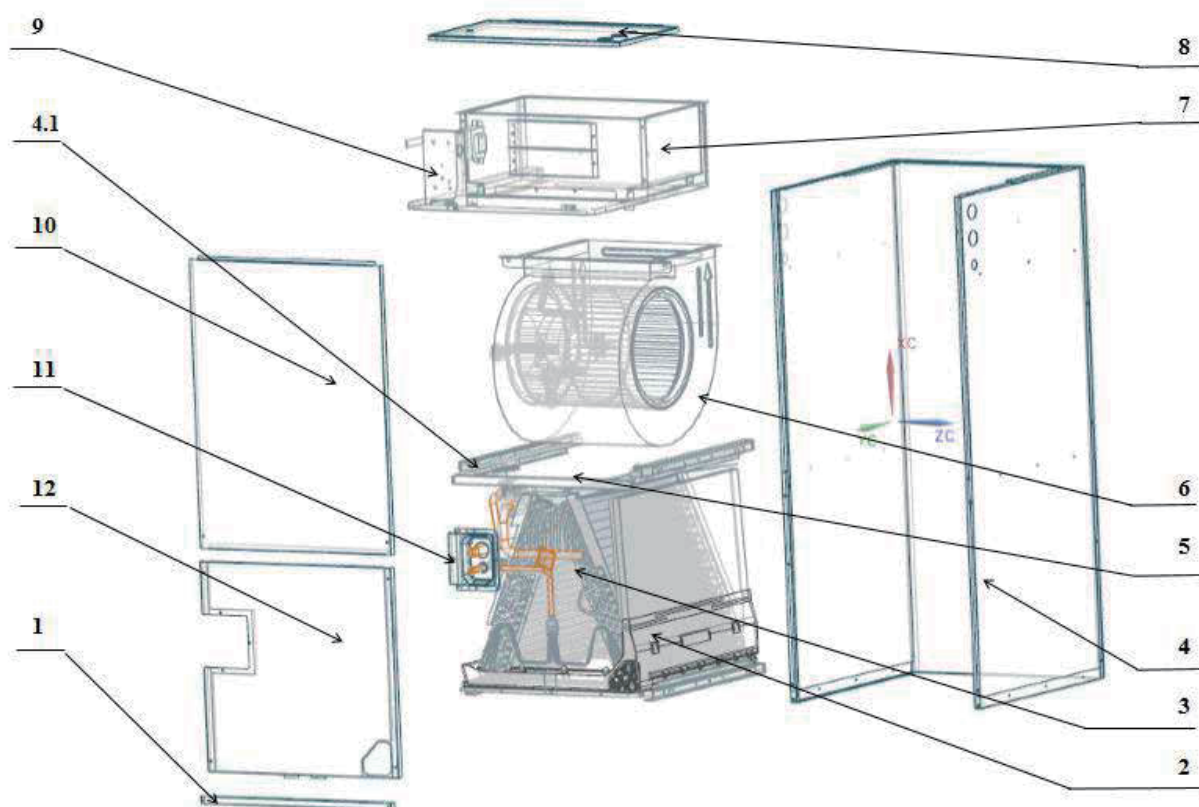
7. T5 high temperature protection



TROUBLESHOOTING

Exploded views and part list

Air Handler Indoor unit

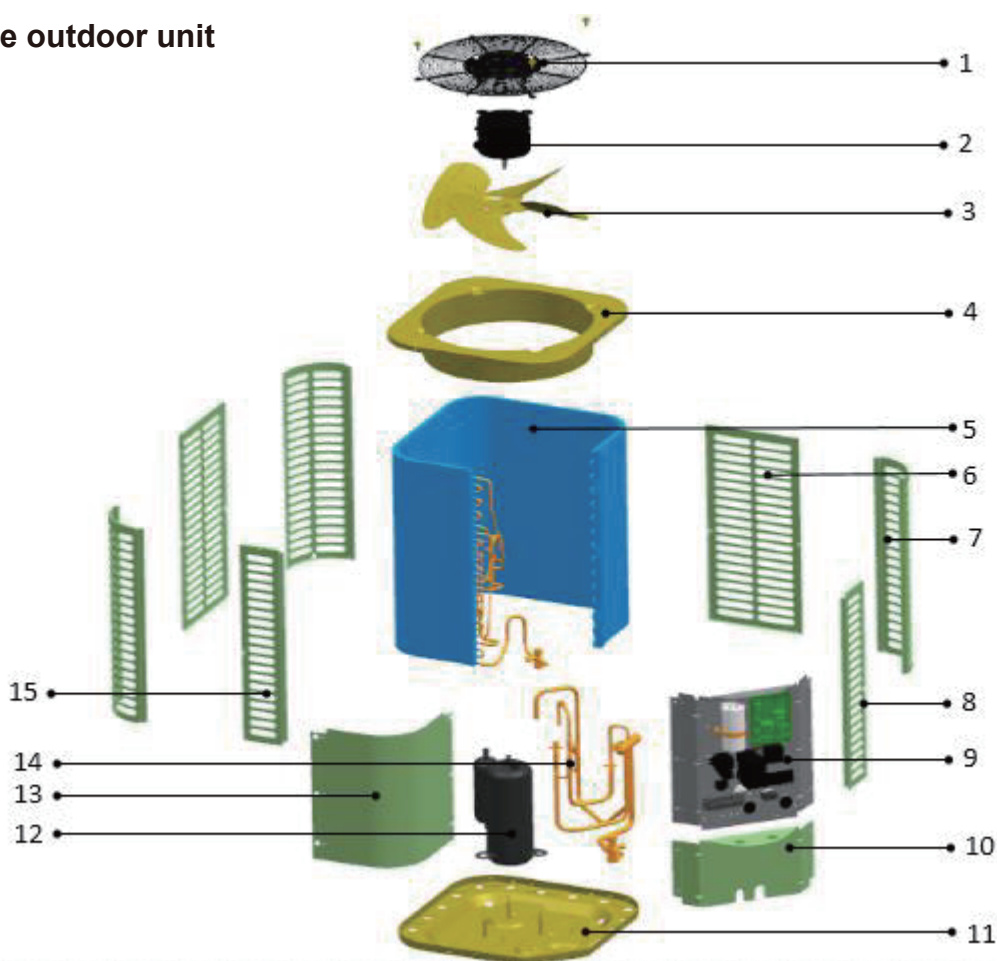


No.	Part Name	Quantity	No.	Part Name	Quantity
1	Filter Cover plate	1	4.1	Water pan supporter assembly	4
2	Water pan components	1	5	Supporter	2
2.1	Water pan# 1	1	6.1	Right Volute Wind Wheel	1
2.2	Water pan# 2	1	6.2	Indoor Motor	1
2.3	Water pan fixed block	1	7	Fan Motor Fixing plate assembly	1
2.4	Water pan brace	2	7.1	Fan Motor Fixing plate	1
3	Evaporator parts	1	7.2	Wind Wheel Fixed Block	2
3.0	Evaporator assembly	1	7.3	Fixed plate on air duct	1
3.1	Air header Assembly	1	7.4	Stator	2
3.2	Diverter Assembly	1	7.5	air duct left stationary plate	1
3.3	Evaporator	2	7.6	air duct right stationary plate	1
3.4	Evaporator Baffle	1	8	Cover of electric control assembly	1
3.5	Evaporator Baffle	1	9	Electronic Control Components	1

TROUBLESHOOTING

3.6	Evaporator Water Baffle #1	2	9.1	Electronic Control Mounting Plate	1
3.7	Evaporator Water Baffle #2	1	9.2	Main Board	1
3.8	Evaporator Water Baffle #3	1	9.3	Transformer	1
3.9	Evaporator Fixing Plate #1	1	10	Upper side plate assembly	1
3.10	Evaporator Fixing Plate #2	1	11	Pipe Cover plate assembly	1
3.11	Evaporator Junction Plate	1	12	Lower side plate assembly	1
4	Chassis assembly	1			

Top discharge outdoor unit



No.	Part Name	Quantity	No.	Part Name	Quantity
1	Cover net	1	9	Electronic components	1
2	Outdoor motor	1	9.1	Electric install board weld assembly	1
3	Axial-flow fan	1	9.2	AC Contactor	1
4	Top cover assembly	1	9.3	Fan motor capacitor	1
5	Condenser assembly	1	9.4	Compressor capacitor	1

TROUBLESHOOTING

5.1	Condenser	1	10	Left side panel	1
5.2	Condenser input pipe assembly	1	11	Chassis assembly	1
5.3	Condenser output pipe assembly	1	12	Compressor	1
5.3.1	High-pressure valves weld assembly	1	13	Top panel	1
5.3.1.1	S.TL-ZL-FTF-A02	1	14	Low pressure valve welding components	1
6	Rear side-panel	2	14.1	Block valve body	1
7	Support board	3	14.2	Pressure switch	1
8	Right side panel	1	15	Left side panel	1



KeplerX Co.Ltd
120 US Route 46,
Parsippany, NJ 07054
Toll Free 1-866-466-3451