

BASE CABINET DIMENSIONS

23" W x 8" D x 31" H



FEATURES

- Wall-mounted design, saving floor space.
- Solid wood frame with plywood panel structure.
- Adjustable shelf for flexible, versatile storage
- Soft closing doors

HARDWARE FINISHES*



Brushed Nickel Satin Brass Matte Black Polished Chrome

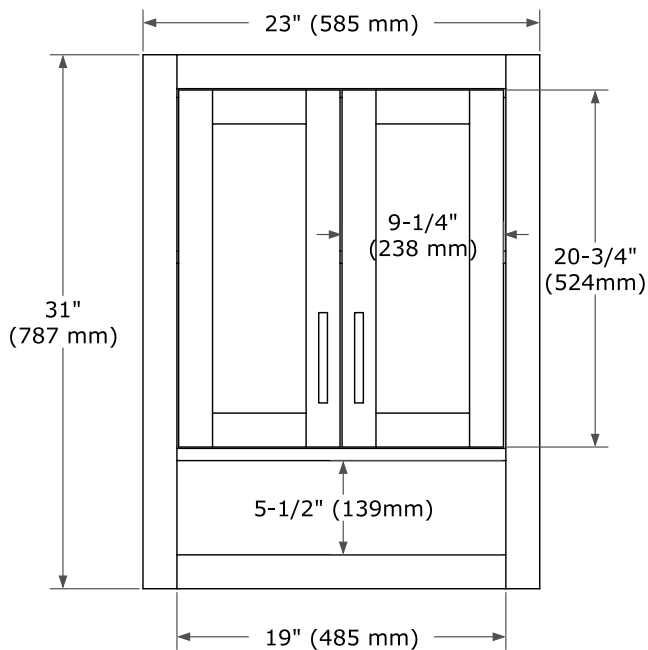
*Hardware comes preinstalled with the illustrated option.
Other finishes are available on our online store if you prefer a different one.

AVAILABLE COLORS

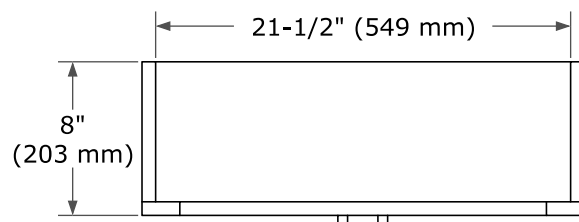


White Grey Midnight Blue Oak

FRONT VIEW



PLAN VIEW



SIDE VIEW

