

Ventilation Solutions

Bathrooms



We give you choices

Designing a bath involves many decisions that will ultimately affect its look and function, whether it be a busy family bathroom or a small guest bath with limited space. Or, maybe, you’re going all out for that ultra-modern bath retreat with all the amenities.

No matter what style bath you’re designing, one thing remains the same - the need for proper ventilation.

And who better to offer you the perfect ventilation solution than Fantech®? For more than two decades our quiet ventilating fans have protected bathrooms from the damaging effects of mold and mildew without disturbing your peace and quiet.

Fantech Premium Bath Fans

- Unobtrusive, quiet and efficient
- Superior CFM at higher static pressure
- Single and Dual grilles/locations
- Exterior Mount
- Rated for continuous duty
- 100% speed controllable*
- For use with recommended FIDT flexible duct
- 7 year warranty*

*Selected models

No Sones



This symbol identifies the notable lack of audible fan noise compared to even the lowest Sone surface mount solutions on the market. We are proud to offer our customers a smarter, quieter way to ventilate one or multiple bathrooms.

Energy-Saving Fans

Fantech is proud partner with ENERGY STAR® to provide energy efficient bath ventilation products for your home.

- Use 70% less energy than conventional models
- Compatible with controls for more savings



RC 6P
Roof Cap

Roof cap with damper flap closure, duct connection and screened exhaust opening. Learn more on page 15.

PB 270L10-2

Premium Bathroom Exhaust Fan with Dual Grilles & LED Bulbs

Excellent to be used as an exhaust fan in large bathrooms or spas with multiple exhaust locations such as a steam shower, bath tab or toilet. Learn more on page 11.

FY 644
Y-Connector

Connects loose branch's ends to the main duct.

FIDT 4
Flexible Duct

Flexible round insulated duct. The insulation provides great sound and thermal efficiency. UL Listed. Available in 25-foot lengths. Learn more on page 15.

Part of a Premium Bath Fan kit

Recommended accessories

Myth vs Reality

Myth:
Remote mount fans are more expensive

Powerful and silent remote mount bath fan solutions from Fantech are more economical than you may think. The table below illustrates an average installed cost for two fans mounted in a master bath or in adjacent bathrooms. Top it off with an unbeatable 7 year warranty, and the competition is left far behind.

Listed costs verified by using 2018 National Construction Estimator.

| Equipment / Labor | Comparable 110CFM Ceiling Mount Fan* | | | | Premium Bath Fan by Fantech | | | |
|-------------------|--------------------------------------|----------|---------|-------|---|----------|----------|-------|
| | Materials | Quantity | Cost | Total | Materials | Quantity | Cost | Total |
| | | pc | \$ / ea | \$ | | pc | \$ / ea | \$ |
| Main Bathroom | Comparable 110CFM Ceiling Mount Fan | 1 pc | 205.- | 205.- | PB 270L10-2 Remote Mount Bath Fan (270 CFM) | 1 pc | 403.- | 403.- |
| Master Bathroom | Comparable 110CFM Ceiling Mount Fan | 1 pc | 205.- | 205.- | Second Location FREE | 1 pc | - | - |
| Controls | Std On/Off Toggle Switches | 2 pcs | 5.- | 10.- | Std On/Off Toggle Switches | 2 pcs | 5.- | 10.- |
| Ducts | 12 ft. 6" insulated ducts | 1 pc | 40.- | 40.- | 6" Flex + 4" Flex | 1 pc | 70.- | 70.- |
| Roof Caps | 6" roof cap | 2 pcs | 30.- | 60.- | 6" roof cap | 1 pc | 30.- | 30.- |
| Electrical Labor | Wiring fan | 2 hrs | 55.- | 110.- | Wiring fan | 1 hr | 55.- | 55.- |
| Ducting labor | Mount grille box | 2 pcs | 38.- | 76.- | Mount grille box | 2 pcs | 38.- | 76.- |
| | Mount duct & roof cap | 2 pcs | 90.- | 180.- | Mount duct & roof cap | 1 pc | 90.- | 90.- |
| Installation Cost | | \$ 996.- | | | | | \$ 734.- | |

* Based on internet retail cost of Panasonic FV-11VQL6

PBW 110L7 Exterior Wall Mount Bath Fan with one Grille & LED Light

Features a fan that mounts on the exterior wall. The fan's natural sound is kept at a distance from the ceiling grille, resulting in a very quiet operation. Learn more on page 13.

FIDT 4 Flexible Duct

Flexible round insulated duct. The insulation provides great sound and thermal efficiency. UL Listed. Available in 25-foot lengths. Learn more on page 15.

- Part of a Premium Bath Fan kit
- Recommended accessories

Remote mounted bath exhaust for 1st floor bathrooms

Because there are often finished levels above, 1st floor bathrooms can be a challenge to ventilate with vertically routed duct work. When duct work is routed horizontally between two levels of the home, it can be difficult to locate a remote-mounted fan indoors. No need to worry - Fantech has a solution!

With the PBW series of exterior, wall-mount premium bath fans, even 1st floor bathrooms can be provided with the benefits of remote-mounted fans. The PBW series features a fan that mounts on the exterior wall. The fan's natural sound is kept at a distance from the ceiling grille, resulting in a very quiet operation. Similar to the other premium bath fan products, PBW models include ceiling grilles with and without lights.



YOUR BATHROOM.
YOUR SPACE.
YOUR COMFORT.

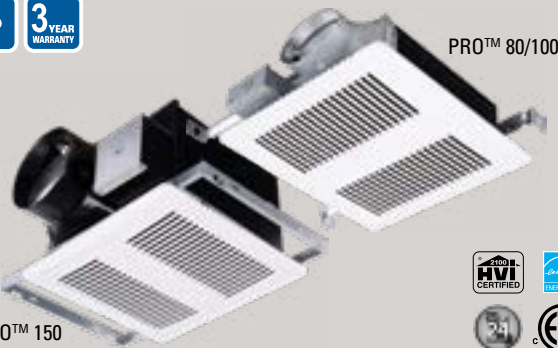
PRO Series

Built for the Pro in mind

Efficiency, quiet operation and ease of installation characterize both the PRO™ and PRO PLUS™ series. Both fans are certified to the rigorous California Title 24 building energy code, as well as ETL/c-ETL, HVI, and Energy Star standards. The PRO™ Series operates at just 2.0 sones while the PRO PLUS™ is barely audible at 0.5 sones. Installation is fast and easy thanks to an adjustable mounting bracket that requires fewer screws than other brands.

PRO™ Series (80, 100, & 150)

with a Ceiling Grille



PRO™ Series offers three models with a ceiling grille and damper for airflow of 80, 100 or 150 cfm. The PRO™80 fan has a unique plug and play concept that allows you to add accessories such as a humidity sensor without changing the fan. This model holds an ETL listing and conforms to UL and CSA safety standards. ENERGY STAR® and HVI qualified, California Title 24 Listed.

Contractor packs are available. See page 14 for details.

Item #98500, #98501, and #98598. Shipping weight 9 lbs.

PRO PLUS™ Series

with LED Ceiling Grille, Humidity and Motion Sensor



User-adjustable 80/90/110/140 cfm fan with a ceiling grille, backdraft damper, humidity and motion sensor. The fan provides 4 different airflows: 80-90-110-140 cfm. Uses a 6" flexible duct. The product is provided with an adjustable 12-24" bar hanger for ease of installation. This model holds an ETL listing and conforms to UL and CSA safety standards. ENERGY STAR® and HVI qualified, California Title 24 Listed.

Item #98506 and #98507. Shipping weight 12 lbs.

NEW IPHS5



Humidity sensor for automatic fan control. Humidity adjustment, time-out settings and 20/40 air-cycle mode. cULus, ASHRAE 62.2, Title 24 listed. White.

Item #156040
W 1-3/4" x D 1-1/4" x H 4-1/4"

PRO™ Ceiling Radiation Damper



UL 555C classified for use in 1-hour fired rated ceiling or ceiling assembly installation. Only for use with the PRO™ 80 & 100 fan models.

Item #98599
7 3/16" x 7 3/16" x 5 5/16"

FD 60EM Electronic Push Button Timer



Electronic push button timer switch. Select from 10, 20, 30 and 60 minute timed operation of fan. Fits standard single gang box. Ideal for multiple switching locations. Three available colors for the buttons (white, light almond, ivory).

Item #411386
W 1-3/4" x D 1-1/4" x H 4-1/4"

PRO PLUS™ Ceiling Radiation Damper



UL 555C classified for use in 1-hour fired rated ceiling or ceiling assembly installation. Only for use with the PRO™ 150 & PRO PLUS™ fan models.

Item #98600
7 3/16" x 7 3/16" x 5 5/16"

PB Series

Premium Bath Fans • Single Grilles

Clear the air in smaller baths and powder rooms

A small-scale grille mounts in the ceiling while the fan motor mounts in a remote location away from the living area. The result is a quiet yet powerful combination designed to help protect your home from the damaging effects of humidity. PB fans are designed for intermittent or continuous operation to meet **ASHRAE Standard 62.2**.

PB 110 (PB 190) Premium Bath Fan with one Ceiling Grille



- 110 CFM (190 CFM) fan
- One ceiling grille
- Grille housing with a damper
- Uses 4" (6") duct
- ENERGY STAR® qualified
- UL Listed for wet locations

PB 110L7 Premium Bath Fan with a Dimmable 7W LED Light



- 110 CFM fan
- One ceiling grille with LED light
- Grille housing with a damper
- Dimmable 7W LED bulb
- Uses 4" duct
- ENERGY STAR® qualified
- UL Listed for wet locations

PB 110L10 Premium Bath Fan with a Dimmable 10W LED Light



- 110 CFM fan
- One ceiling grille with LED light
- Grille housing with a damper
- Dimmable 10W LED bulb
- Uses 4" duct
- ENERGY STAR® qualified
- UL Listed for wet locations

PB Series

Premium Bath Fans • Dual Grilles

The key for clean oversized baths is spot ventilation

Dual grille Premium Bath fans can effectively ventilate two areas of the bath or two different bathrooms. Small 7" ceiling grilles (with or without lights) can be easily positioned directly over showers, whirlpool tubs, steam showers, toilet or vanity. The fan motor is installed away from the living area for super quiet operation. PB fans are designed for intermittent or continuous operation to meet **ASHRAE Standard 62.2**.

PB 270-2 (PB 370-2) Premium Bath Fan with Dual Grille



- 270 CFM (370 CFM) fan
- Two ceiling grilles
- Two grille housings with dampers
- 4"x4"x6" (6"x6"x6") Y-adapter
- Uses 4", 6" ducts
- ENERGY STAR® qualified
- UL Listed for wet locations

PB 270L7-2 Premium Bath Fan with Dual Grille and a Dimmable 7W LED Light



- 270 CFM fan
- Two ceiling grilles with LED lights
- Two grille housings with dampers
- Two dimmable 7W LED bulbs
- 4"x 4"x 6" Y-adapter
- Uses 4", 6" ducts
- ENERGY STAR® qualified
- UL Listed for wet locations

PB 270L10-2 Premium Bath Fan with Dual Grille and a Dimmable 10W LED Light



- 270 CFM fan
- Two ceiling grilles with LED lights
- Two grille housings with dampers
- Two dimmable 10W LED bulbs
- 4"x 4"x 6" Y-adapter
- Uses 4", 6" ducts
- ENERGY STAR® qualified
- UL Listed for wet locations

PB Series

Combination Premium Bath Fans • Dual Grilles

Multiple options, same great performance

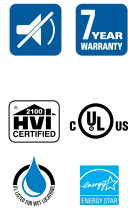
Combo units include one exhaust fan with one lit and one unlit ceiling grille. A single model number provides the exact bath fan components needed for a dual location exhaust system. PB fans are designed for intermittent or continuous operation to meet **ASHRAE Standard 62.2**.

PB 270L7V-2 Premium Bath Fan
with a Dimmable 7W LED Light
and one Vent-Only
Ceiling Grille



- 270 CFM fan
- One ceiling grille with 7W light
- One vent-only ceiling grille
- Two grille housings w/dampers
- Dimmable 7W LED bulbs
- 4"x4"x6" Y-adapter
- Uses 4", 6" ducts. ENERGY STAR®
- UL Listed for wet locations

PB 270L10V-2 Premium Bath Fan
with a 10W Dimmable LED Light
and one Vent-Only
Ceiling Grille



- 270 CFM fan
- One ceiling grille with 10W light
- One vent-only ceiling grille
- Two grille housings w/dampers
- Dimmable 10W LED bulbs
- 4"x4"x6" Y-adapter
- Uses 4", 6" ducts. ENERGY STAR®
- UL Listed for wet locations

PB 270L710-2 Premium Bath Fan
with one each 7W and 10W
Dimmable LED Lights



- 270 CFM fan
- Two ceiling grilles with LED lights and dampers
- One 7W and one 10W dimmable LED bulbs
- 4"x4"x6" Y-adapter
- Uses 4", 6" ducts. ENERGY STAR® qualified
- UL Listed for wet locations

PBW Series

Exterior Mount Bath Fans

No where to exhaust a fan?

We have expanded our Premium Bath Fan selection to include a quartet of models powered by exterior mounted wall fans. An excellent alternative when space is an issue or direct venting vertically is impossible. Ideal for homes, condominiums and apartment complexes. Choose lit or unlit models. PB fans are designed for intermittent or continuous operation to meet **ASHRAE Standard 62.2**.

PBW 110 Exterior Wall Mount Bath Fan
with one Ceiling Grille



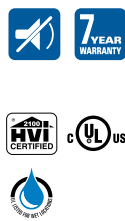
- 120 CFM fan
- One ceiling grille
- Grille housing with damper.
- UL Listed for wet locations.

PBW 110L7 Exterior Wall Mount Bath Fan
with a Dimmable 7W LED Light



- 120 CFM fan
- One Ceiling Grille with housing & damper
- Dimmable 7W LED bulb
- UL Listed for wet locations

PBW 110L10 Exterior Wall Mount Bath Fan
with a Dimmable 10W LED Light



- 120 CFM fan
- One Ceiling Grille with housing & damper
- Dimmable 10W LED bulb.
- UL Listed for wet locations

Selection Guide

Premium Bath Fans with Ceiling Grilles

| Model | Duct size | Power @ 0.2" P _s | Voltage / phase | 0.2" P _s | 0.4" P _s | CFM per Watt @ 0.2" P _s | ENERGY STAR® Qualified | Lamp | Fan Dimensions | | Shipping weight | Item # | Warranty |
|----------|-----------|-----------------------------|-----------------|---------------------|---------------------|------------------------------------|------------------------|------|----------------|----------|-----------------|--------|----------|
| | inch | W | V / ~ | cfm | | | | | inch (W) | inch (H) | lbs | | |
| PB 110 | 4 | 21 | 120 / 1 | 110 | 83 | 5.3 | Yes | - | 8 ¾ | 6 ½ | 9 | 40568 | 7 |
| PBW 110 | 4 | 19 | 120 / 1 | 112 | 83 | 5.9 | - | - | 10 ¼ | 13 | 12 | 412256 | 7 |
| PB 190 | 6 | 69 | 120 / 1 | 200 | 152 | 2.9 | Yes | - | 11 ¾ | 6 | 14 | 40571 | 7 |
| PB 270-2 | 4/6 | 74 | 120 / 1 | 270 | 232 | 3.7 | Yes | - | 11 ¾ | 6 | 17 | 40572 | 7 |
| PB 370-2 | 6 | 122 | 120 / 1 | 370 | 317 | 3.0 | - | - | 13 ⅛ | 6 ⅝ | 21 | 45433 | 7 |

Premium Bath Fans with Ceiling Grilles and LED Lights

| Model | Duct size | Power @ 0.2" P _s | Voltage / phase | 0.2" P _s | 0.4" P _s | CFM / Watt @ 0.2" P _s | ENERGY STAR® Qualified | Lamp | Fan Dimensions | | Shipping weight | Item # | Warranty |
|--------------|-----------|-----------------------------|-----------------|---------------------|---------------------|----------------------------------|------------------------|-------------------|----------------|----------|-----------------|--------|----------|
| | inch | W | V / ~ | cfm | | | | | inch (W) | inch (H) | lbs | | Year |
| PB 110L7 | 4 | 23 | 120 / 1 | 110 | 79 | 4.8 | Yes | 7W Dimmable LED | 8 ¾ | 6 ½ | 10 | 44942 | 7 |
| PB 110L10 | 4 | 23 | 120 / 1 | 110 | 79 | 4.8 | Yes | 10W Dimmable LED | 8 ¾ | 6 ½ | 10 | 44943 | 7 |
| PBW 110L7 | 4 | 19 | 120 / 1 | 112 | 83 | 5.9 | - | 7W Dimmable LED | 10 ¼ | 13 | 12 | 44949 | 7 |
| PBW 110L10 | 4 | 19 | 120 / 1 | 112 | 83 | 5.9 | - | 10W Dimmable LED | 10 ¼ | 13 | 12 | 44950 | 7 |
| PB 270L7-2 | 4/6 | 67 | 120 / 1 | 260 | 229 | 3.9 | Yes | 7W Dimmable LED | 11 ¾ | 6 | 18 | 44944 | 7 |
| PB 270L10-2 | 4/6 | 67 | 120 / 1 | 260 | 229 | 3.9 | Yes | 10W Dimmable LED | 11 ¾ | 6 | 18 | 44945 | 7 |
| PB 270L7V-2 | 4/6 | 67 | 120 / 1 | 260 | 229 | 3.9 | Yes | 7W Dimmable LED | 11 ¾ | 6 | 18 | 44946 | 7 |
| PB 270L10V-2 | 4/6 | 67 | 120 / 1 | 260 | 229 | 3.9 | Yes | 10W Dimmable LED | 11 ¾ | 6 | 18 | 44947 | 7 |
| PB 270L710-2 | 4/6 | 67 | 120 / 1 | 260 | 229 | 3.9 | Yes | 7W & 10W Dim. LED | 11 ¾ | 6 | 18 | 44948 | 7 |

Pro Series Bath Fans with Ceiling Grilles

| Model | Duct size | Power @ 0.2" P _s | Voltage / phase | 0.1" P _s | 0.25" P _s | ENERGY STAR® Qualified | HVI Qualified | cETLus Qualified | California Title 24 | LED Light | Fan Dimensions | | Shipping weight | Item# | Warranty |
|-----------------------------|-----------|-----------------------------|-----------------|---------------------|----------------------|------------------------|---------------|------------------|---------------------|-----------|----------------|----------|-----------------|-------|----------|
| | inch | W | V / ~ | cfm | | | | | | | inch (W) | inch (H) | lbs | | Year |
| PRO™ 80 | 4 | 25 | 120 / 1 | 80 | 50 | Yes | Yes | Yes | Yes | - | 10 ¼ | 3 ¾ | 9 | 98500 | 3 |
| PRO™ 100 | 4 | 30 | 120 / 1 | 100 | 83.6 | Yes | Yes | Yes | Yes | - | 10 ¼ | 3 ¾ | 9 | 98501 | 3 |
| PRO™ 150 | 6 | 25 | 120 / 1 | 150 | 121 | Yes | Yes | Yes | Yes | - | 10 ½ | 7.63 | 8.38 | 98598 | 3 |
| PRO PLUS™ (80-90-110-140) | 6 | 25 | 120 / 1 | 93-102-127-156 | | Yes | Yes | Yes | Yes | Yes | 10 ½ | 7.63 | 12 | 98506 | 5 |
| PRO PLUS™-L (80-90-110-140) | 6 | 30 | 120 / 1 | 93-102-127-156 | | Yes | Yes | Yes | Yes | Yes | 10 ½ | 3 ¾ | 12 | 98507 | 5 |
| PRO™ 80 Rough-in Kit | 4 | 25 | 120 / 1 | 80 | 50 | Yes | Yes | Yes | Yes | - | 10 ¼ | 3 ¾ | 9 | 98502 | 3 |
| PRO™ 80 Trim Kit | 4 | 25 | 120 / 1 | 80 | 50 | Yes | Yes | Yes | Yes | - | 10 ¼ | 3 ¾ | 9 | 98503 | 3 |
| PRO™ 100 Rough-in Kit | 4 | 30 | 120 / 1 | 110 | 83.6 | Yes | Yes | Yes | Yes | - | 10 ¼ | 3 ¾ | 9 | 98504 | 3 |
| PRO™ 100 Trim Kit | 4 | 30 | 120 / 1 | 110 | 83.6 | Yes | Yes | Yes | Yes | - | 10 ¼ | 3 ¾ | 9 | 98505 | 3 |

FQ Series – Quiet Ventilating Fans

| Model | Duct size | Power @ 0.2" P _s | Voltage / phase | 0.1" P _s | 0.2" P _s | 0.3" P _s | 0.4" P _s | Lamp power (Main/Night) | ENERGY STAR® Qualified | Sones | Shipping weight | Item # | Warranty |
|--------------|-----------|-----------------------------|-----------------|---------------------|---------------------|---------------------|---------------------|-------------------------|------------------------|------------|-----------------|-----------------|----------|
| | inch | W | V / ~ | cfm | | | | W CFL | | | lbs | | Year |
| FQ80 / FQ100 | 4 | 25 / 30 | 120 / 1 | 80 / 110 | 68 / 100 | 56 / 85 | 43 / 70 | - | Yes | <0.3 / 0.7 | 12 / 13 | 483737 / 483738 | 5 |

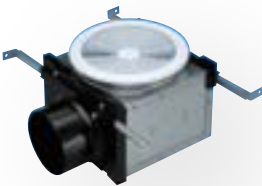
BFRK 100 – Bathroom Fan Retrofit Kit

| Model | Duct size | Rated power @ 0.2" P _s | Voltage / phase | 0.2" P _s | 0.4" P _s | 0.6" P _s | CFM / Watt @ 0.2" P _s | Fan Dimensions | | ENERGY STAR® Qualified | Shipping weight | Item # | Warranty |
|----------|-----------|-----------------------------------|-----------------|---------------------|---------------------|---------------------|----------------------------------|----------------|----------|------------------------|-----------------|--------|----------|
| | inch | W | V / ~ | cfm | | | | W (inch) | inch (H) | | lbs | | Year |
| BFRK 100 | 4 | 21 | 120 / 1 | 110 | 83 | 55 | 5.2 | 8 ¾ | 6 ½ | Yes | 12 | 483737 | 5 |

Selection Guide

Expansion Grilles • Control • Appurtenances for Ducting

PBV 4 (PBV 6) Ceiling Grille Vent



Includes damper, four hanger bars. Fits between 2" x 6" construction. PBV 4 model for use with PB110 and PB270 Series. PBV 6 for PB 370 fan.

Housing dimensions (inch):

PBV4 (#412260)
7 ¾ x 7 ¾ x 5 ⅝

PBV6 (#412261)
8 x 8 x 7 ⅛

PBL 7-4 Ceiling Grille with a Dimmable 7W LED Light



Includes damper, four hanger bars and a dimmable 7W LED bulb. Fits between 2" x 6" construction. For use with PB 110L7, PB 270L7-2, PB 270L7V-2 and PB 270L7-L10-2.

Housing dimensions (inch):

PBL7-4 (#44951)
7 ¾ x 7 ¾ x 5 ⅝

PBL 10-4 Ceiling Grille with a Dimmable 10W LED Light



Includes damper, four hanger bars and a dimmable 10W LED bulb. Fits between 2" x 6" construction. For use with PB 110L10, PB 270L10-2, PB 270L10V-2 and PB 270L7-L10-2.

Housing dimensions (inch):

PBL10-4 (#44952)
7 ¾ x 7 ¾ x 5 ⅝

FIDT Series

Insulated Flex
Duct*



Flexible round insulated duct. The insulation provides greater thermal efficiency to save energy. The product is also covered in a heavy duty, silver jacket for durability. UL listed. Available in 25-foot lengths.

FIDT 4 (#411061), 4", 7 lbs

FIDT 6 (#411062), 6", 9 lbs

RC Series Roof Cap



Roof Cap with damper flap closure, duct connection and screened exhaust opening. Painted black.

RC 4P (#79955), 4", 2 lbs

RC 6P (#79957), 6", 3 lbs

HS Series Louvered Shutter for Exhaust



Plastic louvered shutter with duct connection. For exhaust air only. Used with premium bathroom fans or dryer exhaust.

HS 4W (#45151), 4", 1 lbs

HS 6W (#45153), 6", 1 lbs

FQ-FD Fire Radiation Damper



UL 555C classified for use in 3-hour fire rated floor/ceiling or roof/ceiling assemblies for T-bar, hanger rod/wire ceiling installation. Only for use with FQ fan models.

FQ-FD (#46975), 2 lbs

FD 60EM Electronic Push Button Timer



Provides convenient timed bath fan control: 10, 20, 30 and 60 minutes. Fits standard single gang box. Ideal for multiple switching locations. Three panel colors. 120V / 20A.

FD 60EM (#411386), 1 lbs

NEW IPHS5 Humidity Sensor



Humidity sensor for automatic fan control. Humidity adjustment, time-out settings and 20/40 air-cycle mode. cULus, ASHRAE 62.2, Title 24 listed. White.

IPHS5 (#156040), 1 lbs

* We recommend to use of the insulated flex duct FIDT with our Premium Bathroom Fans.



Distributed Locally by:



Customer Support:

USA 800.747.1762 • USsupport@fantech.net

CANADA 800.565.3548 • CANADAsupport@fantech.net

Systemair Inc. reserves the right to modify, at any time and without notice, any or all of its products' features, designs, components and specifications to maintain their technological leadership position. The application rendering presented in this brochure is for a visual presentation purpose only. Please, contact a professional for technical guidance.



fantech[®]
a systemair company