



Prestel VCS-S1

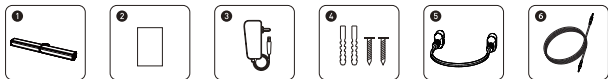


Hi-Fi Speaker



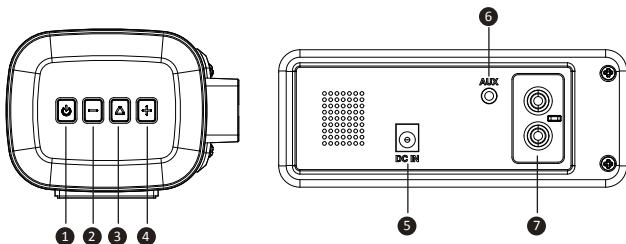
USER MANUAL

Packing List



- ❶ Speaker
- ❷ User Manual
- ❸ Power Adapter
- ❹ Wall Mount Screws
- ❺ RCA Audio Cable
- ❻ 3.5mm Audio Cable

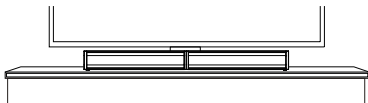
Appearance and Interface



- ❶ Power Key: Short press to turn on, long press to turn off.
- ❷ Volume - Key: Short press volume -1, long press to decrease quickly.
- ❸ Play/Pause Key: Short press to mute the sound.
- ❹ Volume + Key: Short press volume +1, long press to increase quickly.
- ❺ Power Interface: DC 18V IN.
- ❻ Audio Interface: Connect to compatible equipment through 3.5mm RCA audio cable.
- ❼ RCA Interface: Main and auxiliary audio connection interface.

Installation Method

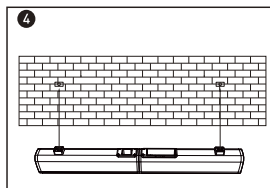
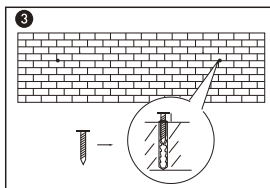
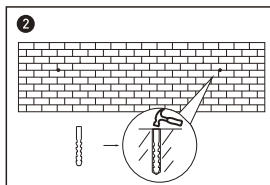
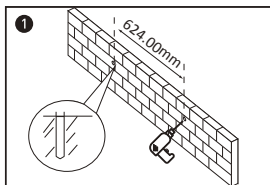
A. Table Placement



Placement:

Place the Hi-Fi speaker on a solid surface.

B. Wall Mount



Product Specifications

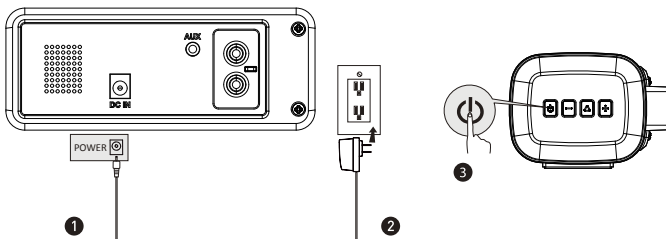
Type	Speaker
Power Supply	DC 18V/2A
Peak Power	30W
Sound Channel	2.1
Driver	(52×58mm)×2 Driver + Subwoofer 2.25"×2
Functional Interface	AUX×1
Distortion	<1%
Product Weight	2.1kg
Product Dimension	805(L)×90(D)×73(H)mm

Safety Instructions

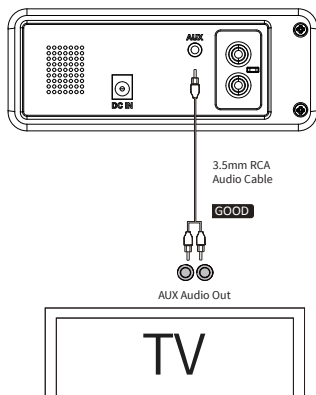
1. Avoid dropping
2. Do not disassemble
3. Avoid extreme temperatures
4. Don't use the device outdoors during thunderstorms
5. Use original or certified cables
6. Don't use any corrosive cleaner/oil to clean
7. The products should not be exposed to dripping or splashing water

Using Speaker

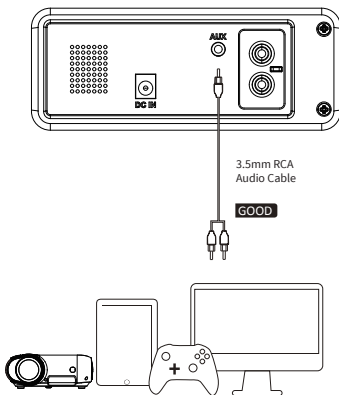
A. Power Connection



B. Connet to TV



C. Connect to Other Devices



You need to purchase one 3.5mm-3.5mm audio cable if there is only 3.5mm female output on your devices.

Using Speaker System

