

USER INSTRUCTION
24Key RGB LED Controller



LED mobile phone Bluetooth controller

Product Features

- LED Bluetooth controller is directly via mobile phone control remote distance can reach 10m without the need to set up, easy to connect open the software within 5 seconds you can automatically connect the controller
- Flow the rhythm of the music changes
- Group control
- Brightness, speed addition and subtraction
- Maximum can be 10 meters SPI driven strip, up to 200 pixels.
- The software shows that the text is based on the language of the mobile phone set up automatic transformation of Chinese, English and other local languages.

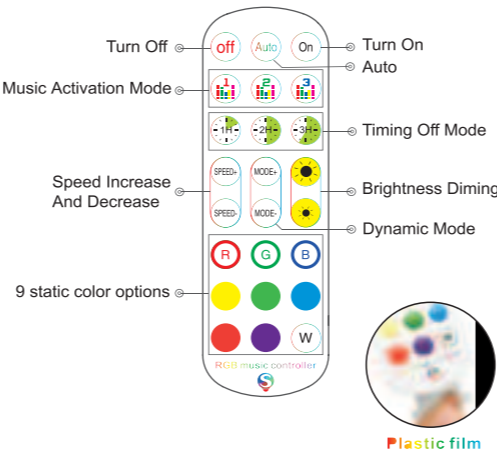
Animation Effect:

- Different color control of each group of LED point.
- Colorful gradient
- All kinds of monochrome, double color gradient
- All kinds of monochrome, double color, colorfull flashing
- Colorful jump
- Follow the thymh of the music chagnes

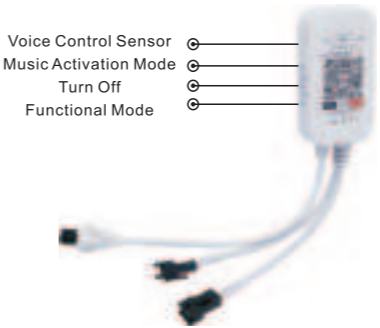
Product Paramters:

- SPI Strip Type: WS2811, SM16703,16730p,SG1903,etc.,
- Bluetooth: BLE V4.2
- Input Voltage: 4.5~12V
- Working Temp: -25~75℃
- Size: 43*22*11mm

Music Remote(Advanced Version)



Controller Mode



VII. Warranty Policy

30-day money-back guarantee for any reason

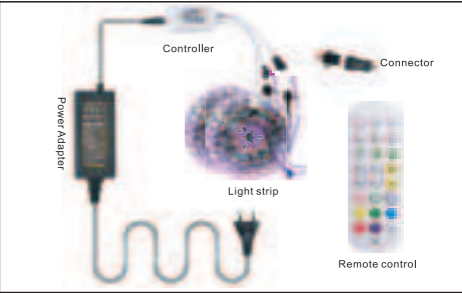
For 30 days after the date of purchase, return your undamaged product and receive a full refund for ANY reason.

12-month warranty for quality-related issues

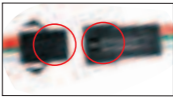
For 12 months after the date of purchase, we take care of all quality-related issues with a REPLACEMENT OR FULL REFUND.

Reminder: Be sure to use your product as directed.

Wire Connection

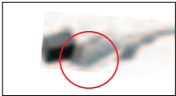


1 The connection between the controller and the power supply



2 Controller and device connection

3 Foam adhesive



Notice:
It is necessary to ensure that the red arrow of the controller corresponds to the black arrow of the device end,otherwise the device will have a short circuit.

Instructions for use of led controller

Ios and android systems can download the app by scanning the QR code. open the browser or other tools with"scan QR code"function,scan the QR code as below:

app download

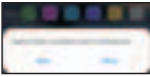
scan the QR code



App operation

Click Duo Col Strip on the lotuslantern app icon,enter the app page.

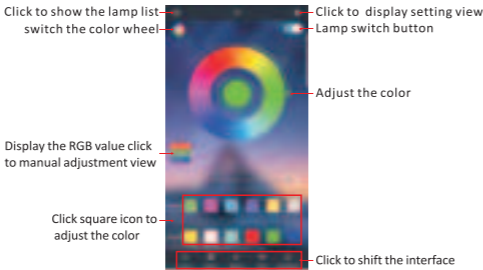
After entering the App interface,if bluetooth is not enabled ,an application wants to enable the bluetooth function of this device click allow



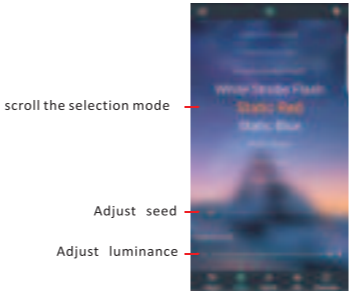
(1) Click to show the lamp list , view lamp list:



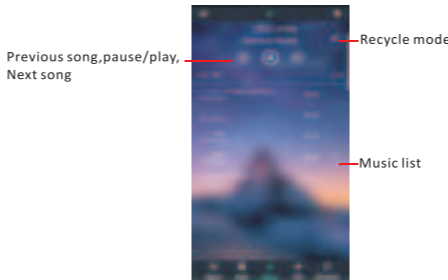
(2) Switch to color and brightness interface:



(3) Switch to the mode interface:



(4) Switch to the music rhythm:



(5) Switch to the microphone rhythm interface:



(6) Switch to the schedule:



(7) Switch to the modify pin sequence interface:



Local music:

1.Download local music on android phone:

(1) Android phone use music players to download songs or copy songs from computers to mobile phones.

(2) Restart duoCol Strip and switch to music Rhythm Interface to see the newly imported music files.

2.Download local music on iphone:

(1) Install itunes software on your computer(Apple or Windows)

(2) Log in to itunes with the same Apple ID account on the Iphone

(3) Use itunes to import downloaded music files on your computer

(4) The imported music files will be synchronized to the iphone in real time

(5) Restart and switch to music Rhythm Interface to see the newly imported music files

FCC Warning:

This equipment has been tested and found to comply with the limits for a Class B digital device, pursuant to part 15 of the FCC Rules. These limits are designed to provide reasonable protection against harmful interference in a residential installation. This equipment generates, uses and can radiate radio frequency energy and, if not installed and used in accordance with the instructions, may cause harmful interference to radio communications. However, there is no guarantee that interference will not occur in a particular installation. If this equipment does cause harmful interference to radio or television reception, which can be determined by turning the equipment off and on, the user is encouraged to try to correct the interference by one or more of the following measures:

- Reorient or relocate the receiving antenna.
- Increase the separation between the equipment and receiver.
- Connect the equipment into an outlet on a circuit different from that to which the receiver is connected.
- Consult the dealer or an experienced radio/TV technician for help.

Caution: Any changes or modifications to this device not explicitly approved by manufacturer could void your authority to operate this equipment.

This device complies with part 15 of the FCC Rules. Operation is subject to the following two conditions:

(1) This device may not cause harmful interference, and (2) this device must accept any interference received, including interference that may cause undesired operation.

This equipment complies with FCC radiation exposure limits set forth for an uncontrolled environment. This equipment should be installed and operated with minimum distance 0cm between the radiator and your body.