

1601 MANUAL RELEASE KIT

DoorKing Part Number

1601-270

This kit is designed for the 1601 barrier gate operator **WITH or WITHOUT** the **convenience open** option. It provides an interlock power cut-off switch when manually using crank tool to move the arm up or down.

Kit Includes: Interlock assembly, Double motor pulley, Crank tool, 2 spring clips with lock nuts.

Your Barrier Operator Setup:	Page:
AC Power ONLY	1
AC Power & Break-Away Arm	2
Convenience Open & Break-Away Arm	3
Convenience Open ONLY	4

Installation

Interlock Cut-Off Switch
(Black wires)

Interlock Assembly

Convenience Open Cut-Off Switch
(Yellow & Orange wires)

Mount spring clips with lock nuts on existing threaded studs inside access door.

Spring Clip

Spring Clip

Crank Tool Storage

Replace existing single motor pulley with double motor pulley. Align motor pulley with gear reducer pulley.

Mount interlock assembly using existing hardware.

SHUT OFF ALL power to the operator.

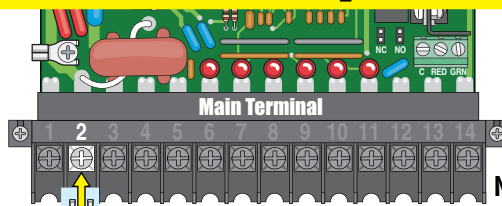
Use existing wire restrainers to run wires. Keep wires clear of all moving parts.

Note: To manually operate, see page 4.

AC Power ONLY Barrier Operator

DANGER
HIGH VOLTAGE!

115 VAC
Power Terminal

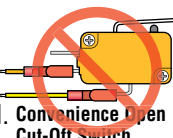


Existing Wire

SHUT OFF the AC input power to the operator from the circuit breaker.

Existing Black Wire from #2 Main Terminal

Note: Convenience open cut-off switch is **NOT** used.



Make sure **ANY** unused wires are **properly terminated** and do **NOT** have exposed bare wires or metal connectors that could cause the operator to malfunction.

New Black Wires

Interlock Cut-Off Switch

115 VAC
Convenience Outlets

AC Power Switch

Connect the interlock cut-off switch wires to the existing black wire connected from main terminal #2.

Copyright 2023 DoorKing®, Inc. All rights reserved.

DKS
DOOR KING
120 S. Glasgow Avenue
Inglewood, California 90301 U.S.A.

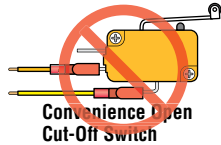
1601-030-E-10-24

AC Power & Break-Away Arm Barrier Operator

SHUT OFF the AC input power to the operator from the circuit breaker.

Octagon Reverse/LED Edge Arm

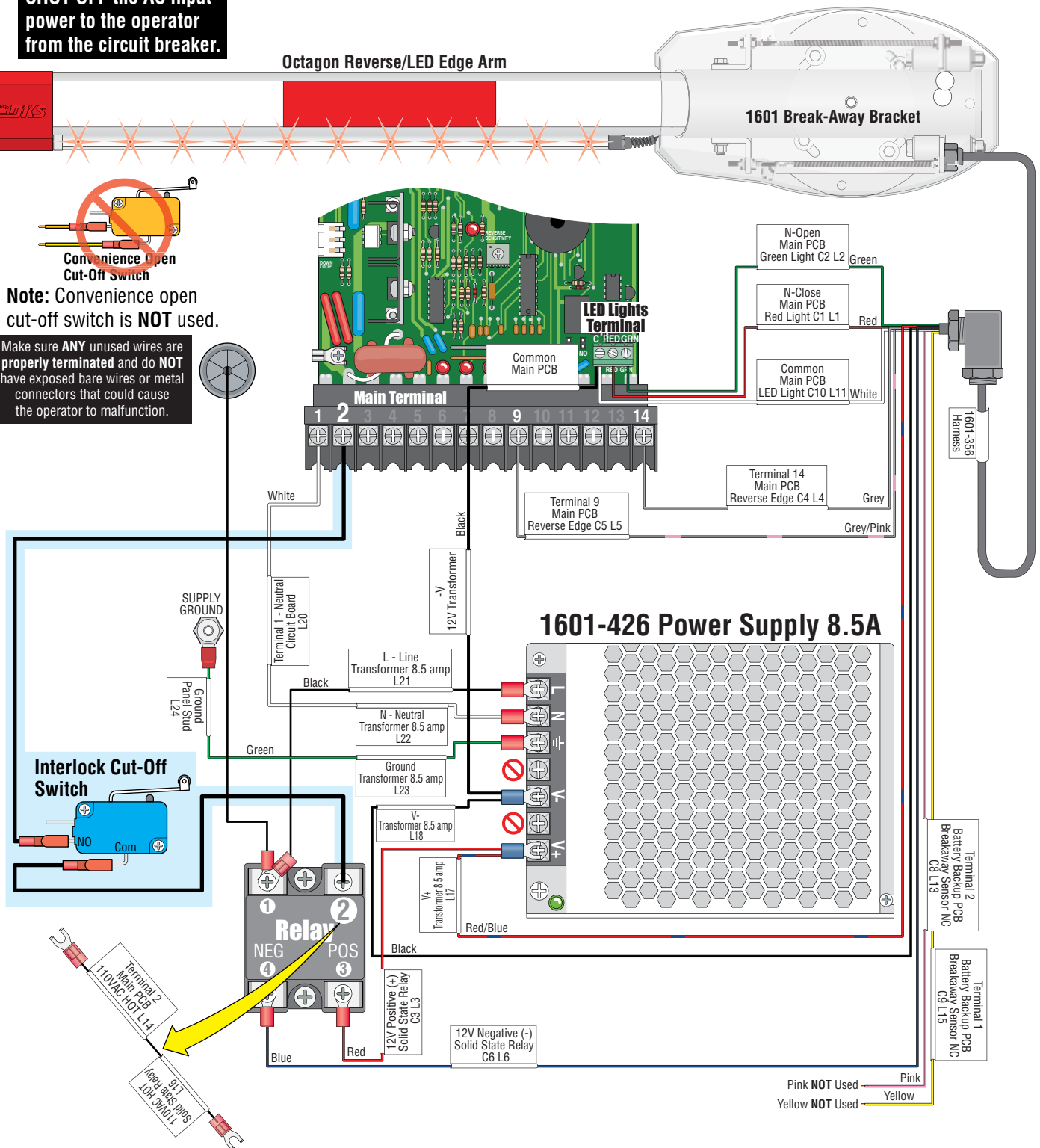
1601 Break-Away Bracket



Convenience Open Cut-Off Switch

Note: Convenience open cut-off switch is **NOT** used.

Make sure **ANY** unused wires are properly terminated and do **NOT** have exposed bare wires or metal connectors that could cause the operator to malfunction.



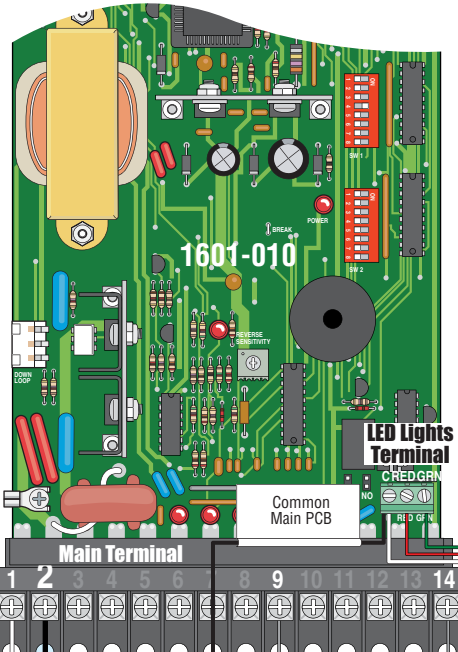
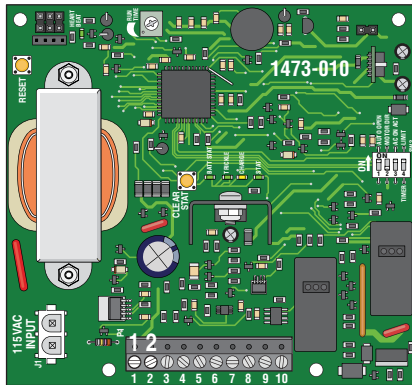
Remove wire from Relay #2 to Main Terminal #2 and replace with Interlock Cut-Off Switch wires.

Convenience Open & Break-Away Arm Barrier Operator

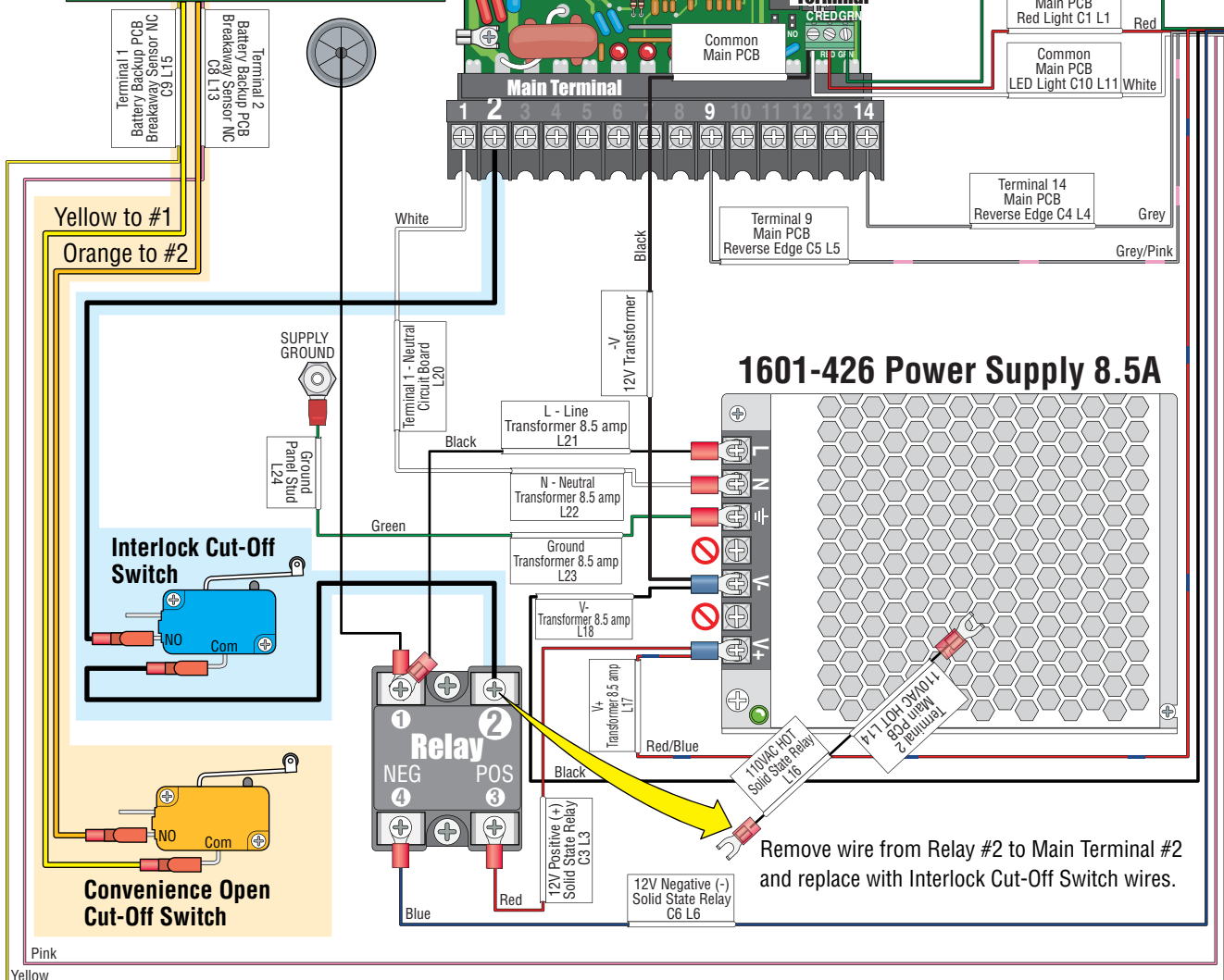
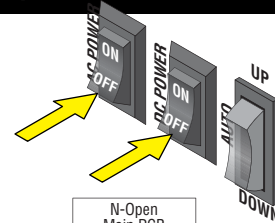
Octagon Reverse/LED Edge Arm

1601 Break-Away Bracket

NOTE: Will **NOT** work with older model
2340-010 convenience open board

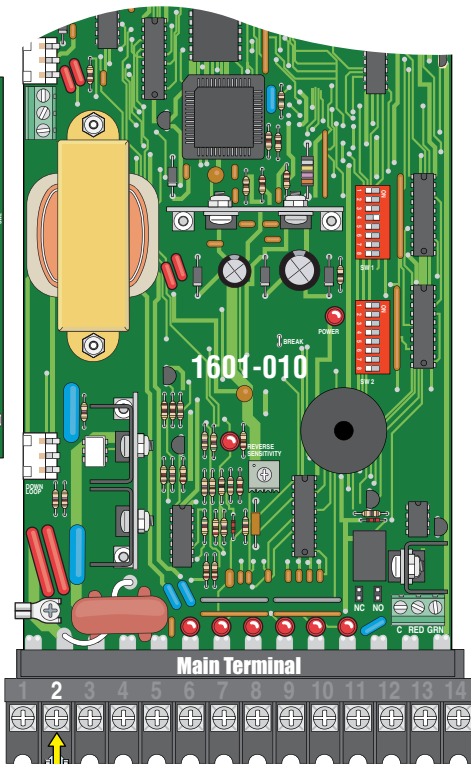
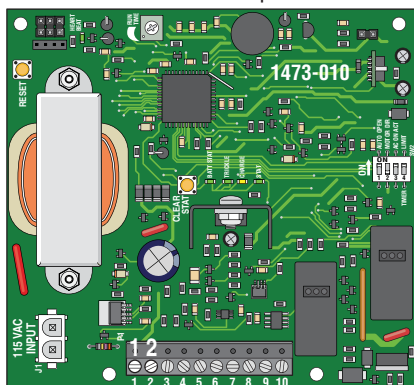


**First, SHUT OFF AC and DC power switches on the operator,
Then, SHUT OFF the AC input power to the operator from the circuit breaker.**

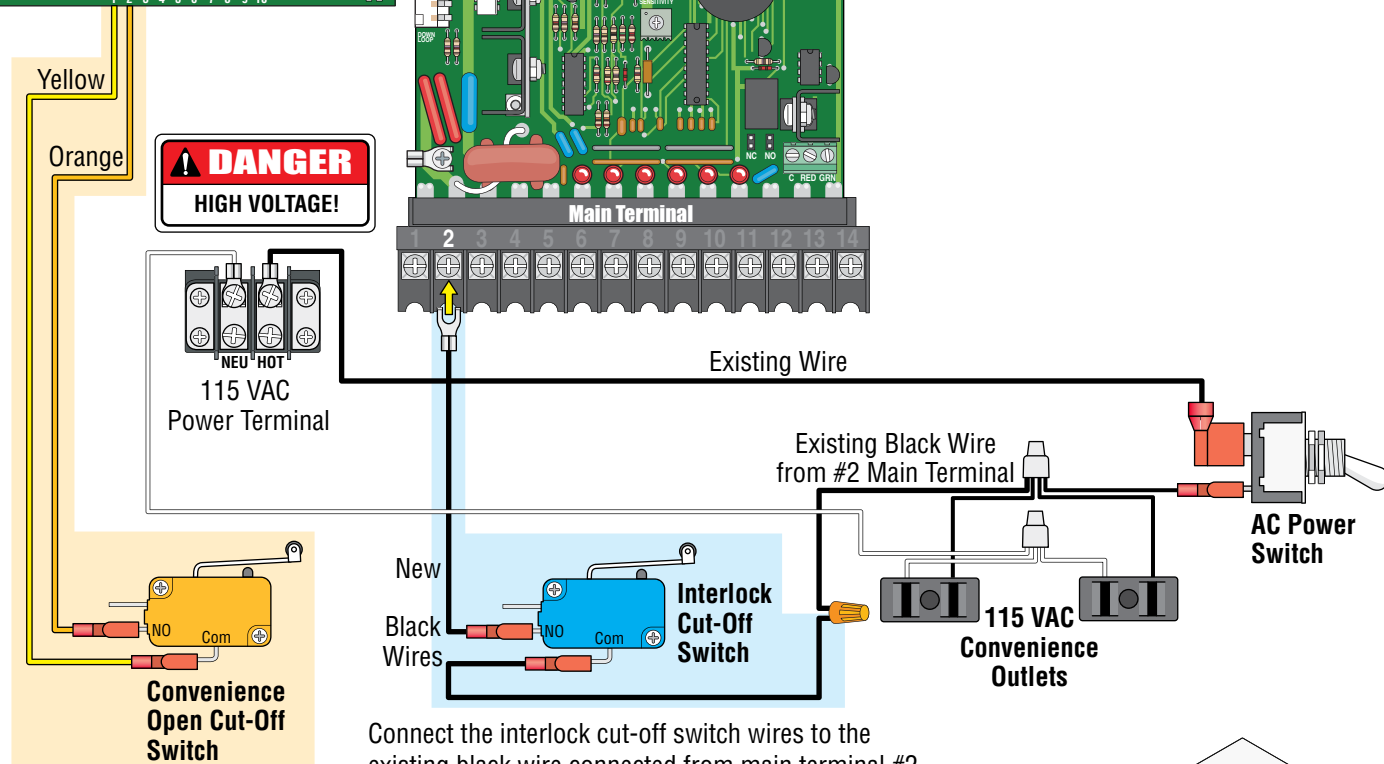
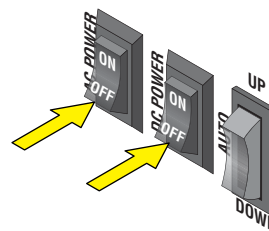


Convenience Open ONLY Barrier Operator

NOTE: Will **NOT** work with older model 2340-010 convenience open board



First, SHUT OFF AC and DC power switches on the operator,
Then, SHUT OFF the AC input power to the operator from the circuit breaker.



Manual Operation

1. Unlock and remove access door.
2. Remove crank tool from inside access door.
3. Flip interlock assembly door up, power will be disabled from operator.
4. Insert crank tool into motor pulley as shown.
5. Rotate crank tool to manually move operator arm up or down.

