

G703

LIGHTSPEED Wireless Gaming Mouse
Souris gaming sans fil LIGHTSPEED

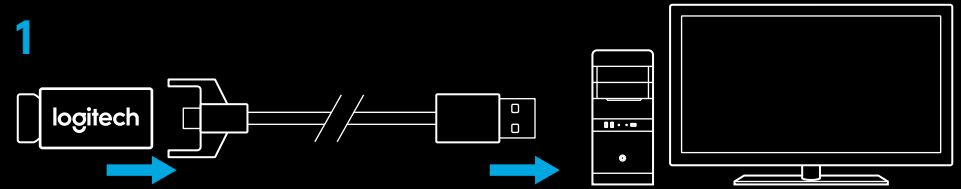
SETUP GUIDE | GUIDE D'INSTALLATION



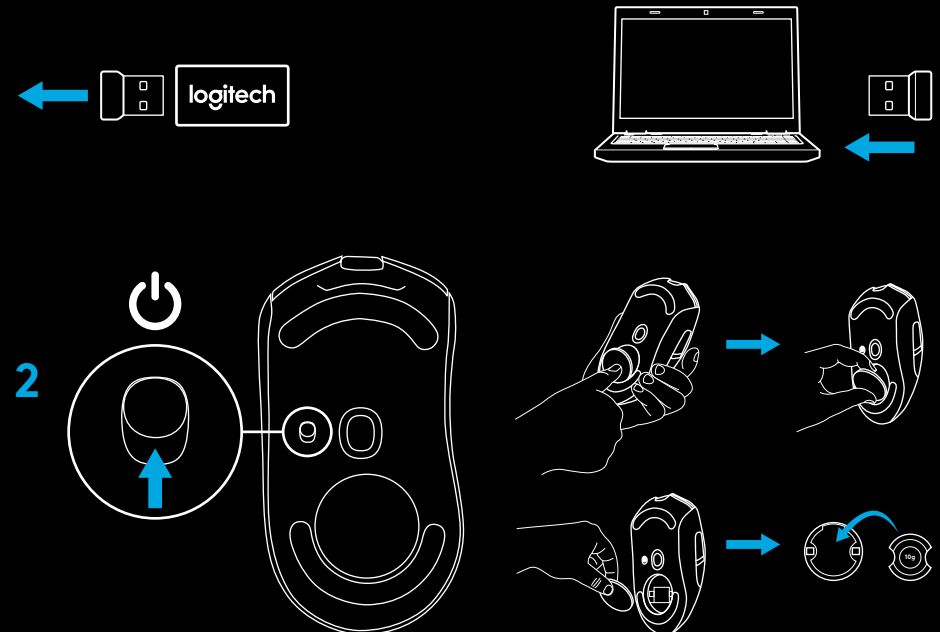
logitech ™

SETUP INSTRUCTIONS

- 1 A wireless receiver, USB adapter, and optional 10g weight can be found in the packaging. Plug one end of the cable into your PC, and the other end into the USB adapter and receiver.
- The receiver can also be used plugged directly into your PC. However, using the cable and adapter when in wireless mode is recommended and allows for better connectivity and easy access to the cable for recharging.



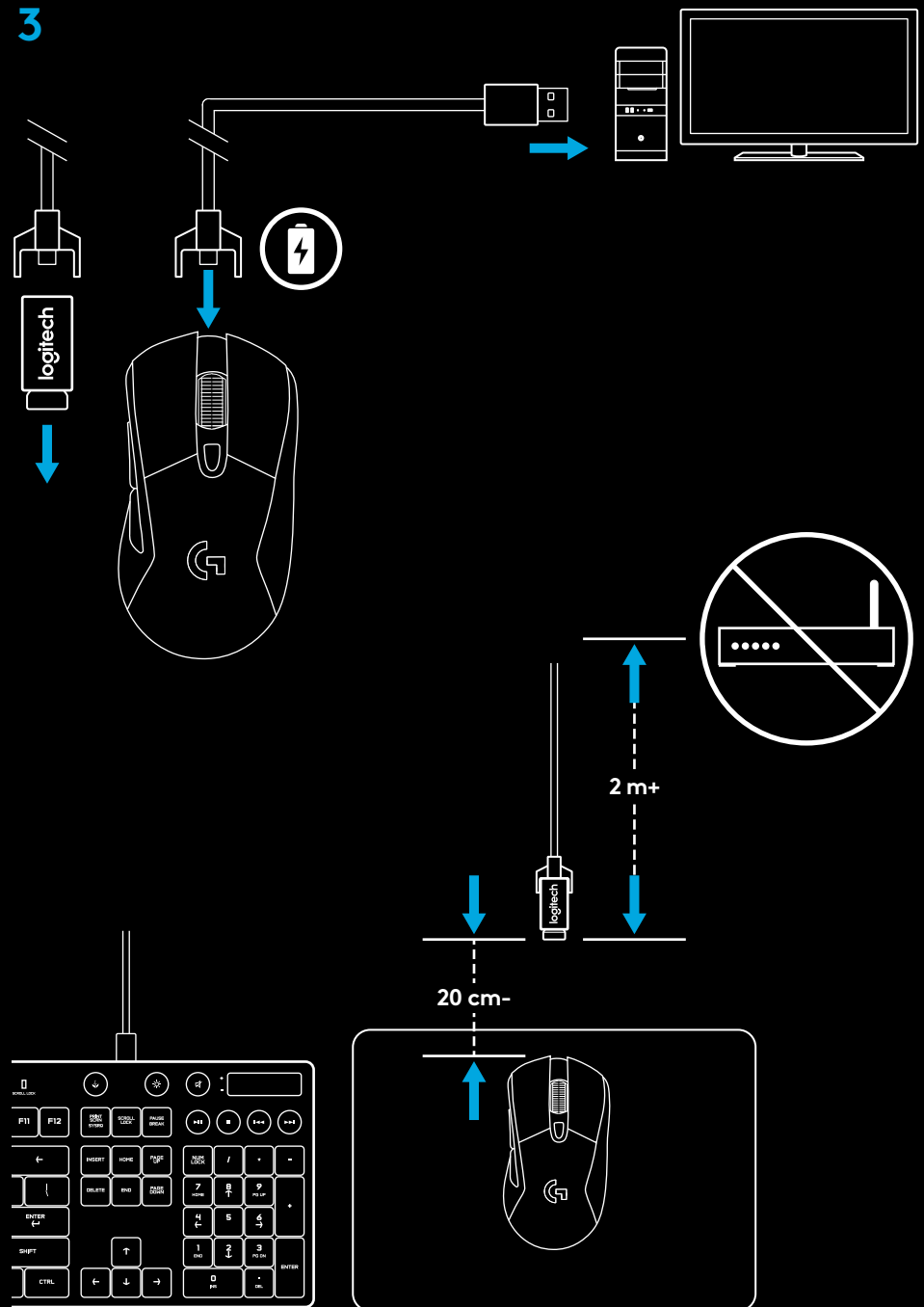
- 2 Turn mouse on via the switch on the bottom of the mouse.



- 3 To charge, disconnect the cable from the adapter and plug into the front of the mouse. Your mouse will operate in data-over-cable mode whenever it is plugged in directly to a PC. Full charge from empty requires approximately two hours plugged in to a PC USB port.

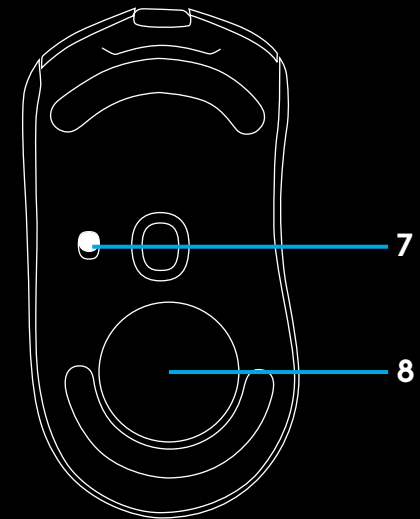
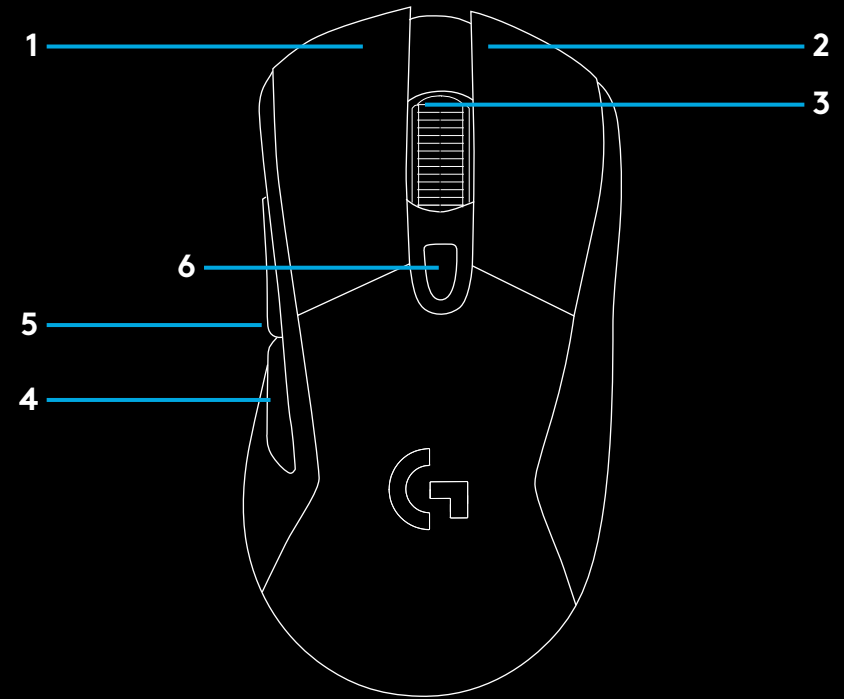
Tips:

- Keep the mouse and receiver 2 m+ away from wireless routers or other 2.4GHz wireless devices to minimize environmental noise.
- G703 has a wireless range of up to 10 meters. To ensure optimal performance in noisy wireless environments, and to keep the charging cable easily accessible, it is recommended to keep the receiver within 20 cm of the mouse.



MOUSE FEATURES

- 1 Left (Button 1)
- 2 Right (Button 2)
- 3 Wheel click (Button 3)
- 4 Back (Button 4)
- 5 Forward (Button 5)
- 6 DPI Cycle
- 7 On/Off switch (bottom of mouse, not programmable)
- 8 Weight door



WIRELESS BATTERY LIFE

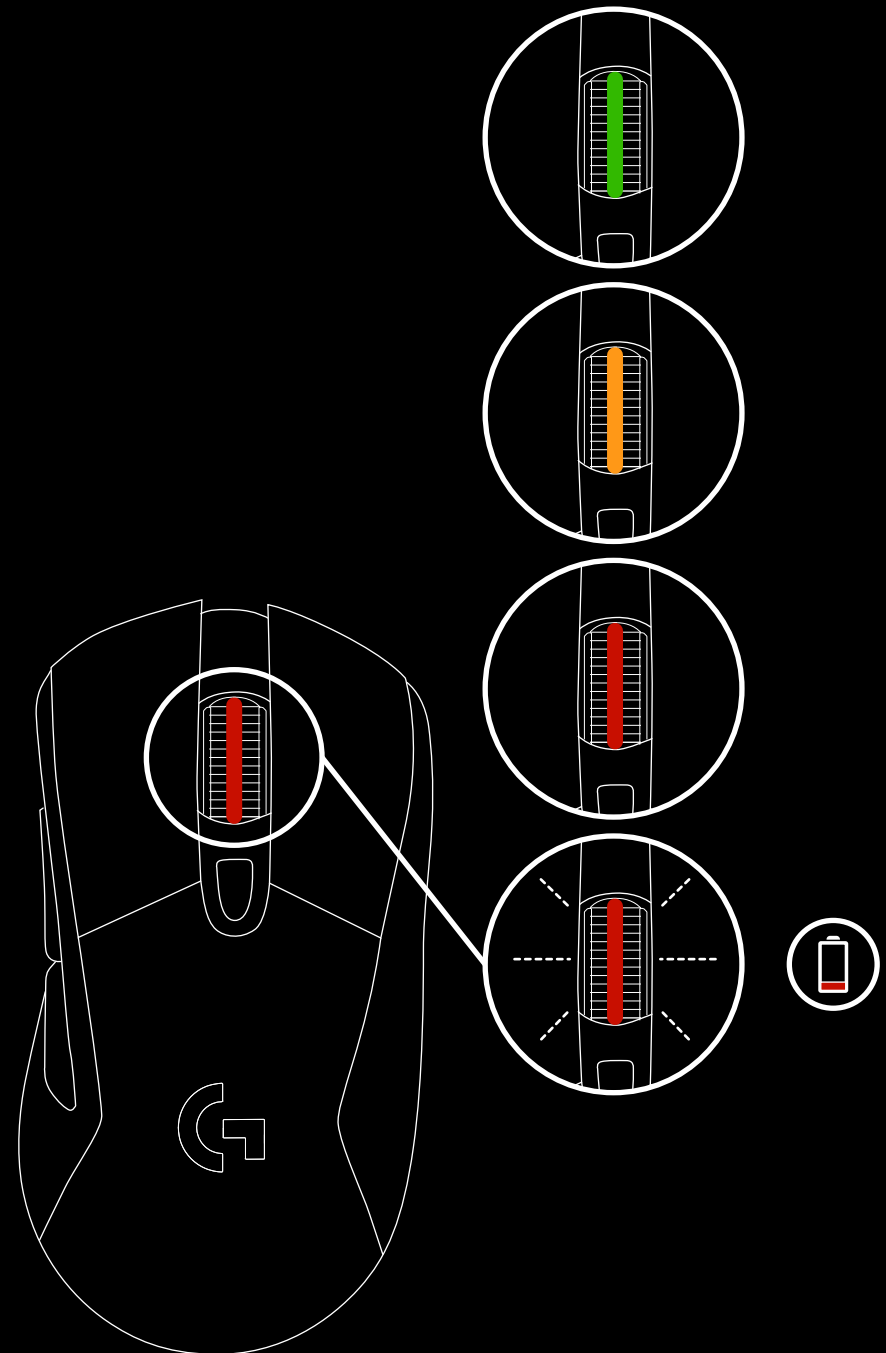
G703 has a rechargeable 720mAh LiPoL battery which provides it with up to 32 hours non-stop gaming at 1ms report rate with lights off, or 24 hours non-stop gaming at 1ms report rate with RGB color cycling on.*

- Charge level can be checked when the mouse is powered on or using Logitech Gaming Software to assign a button to check charge level.
- Charge level is displayed for seven seconds at mouse power-on using the color of the scroll wheel.
 - Green = 50–100%
 - Orange = 30–50%
 - Red = 15–30%
 - Flashing red = <15%

Tip: You can program a button to show charge level using LGS.

- The scroll wheel will flash red when battery is at 15% or less. When this happens, plug in your mouse to charge.
- Charge level, power draw, and estimated remaining battery life can be checked in Logitech Gaming Software

*Battery life and capacity may vary with age and use. Rechargeable batteries have a limited number of charge cycles.

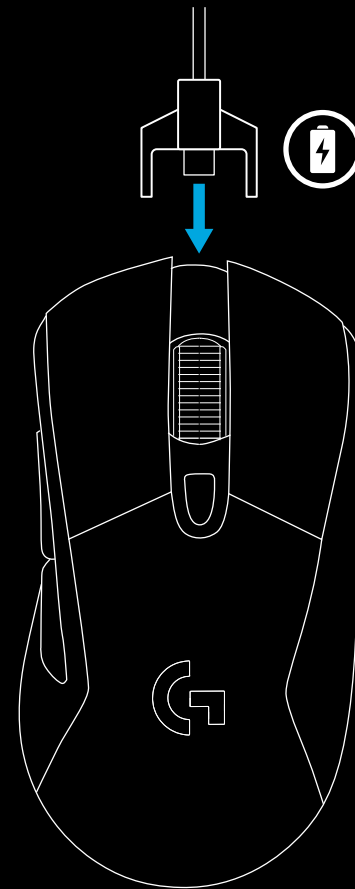


CHARGING/DATA OVER CABLE

Plug your mouse in via the provided USB charging cable when the battery is low. The mouse will seamlessly swap to data-over-cable mode whenever it is plugged in. G703 is also compatible with the Logitech G POWERPLAY wireless charging system, sold separately.

RGB PROGRAMMABLE LIGHTING

G703 wheel and logo is illuminated with RGB LEDs. These colors can be customized using Logitech Gaming Software to a variety of breathing, color cycling, or solid color modes. Lighting patterns can also be synchronized with other supported Logitech G devices using this software.



LOGITECH GAMING SOFTWARE

You can customize the 3 onboard profiles of the G703 using the Logitech Gaming Software. These settings include surface tuning, button programming, lighting color, lighting effects, report rate, and tracking behavior. G703 allows up to 5 DPI settings per profile.

By default, G703 has 1 active onboard profile with the following settings:

- DPI: 400, 800, 1600, 3200
- RGB lighting: color cycle
- Report rate: 1ms

QUESTIONS

<http://support.logitech.com/product/g703>