

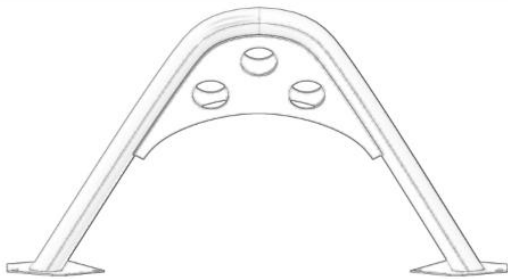
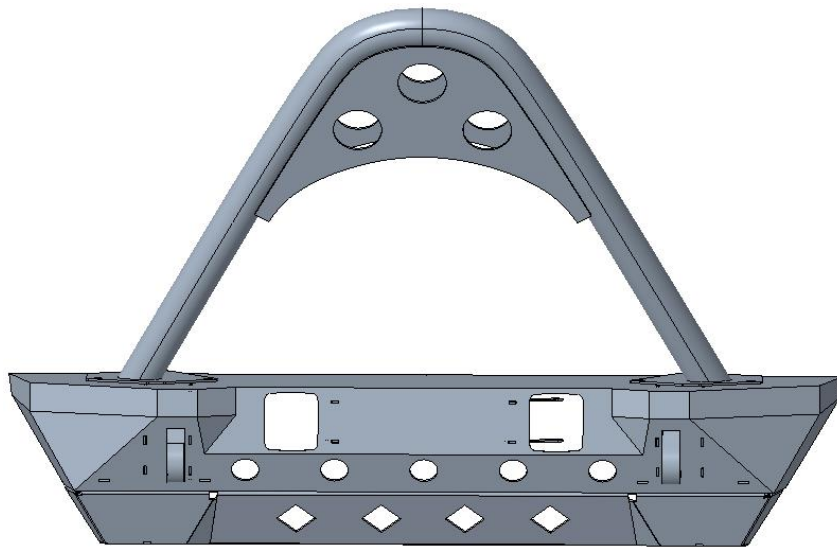


**MAKE A DIFFERENCE**

## **Front Bumper**

**BXG.2039-S**

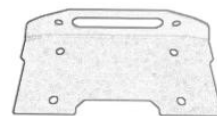
### **(1) Contents:**



**Bull Bar**



**Skid Plate**



**Winch Bracket**



**Bumper**



**D-rings**

Qty	Part Name	Size(mm)	Picture
2	Hex Bolt	M12*35	
10	Button Head Socket Cap Bolts Screws	M10*20	
5	Button Head Socket Cap Bolts Screws	M8*16	
8	Split Lock Washer	D12	
8	Flat Washer	M12*30*2	
10	Flat Washer	M10*20*2	
6	Hex Nuts	M12	
10	Flange Hex Lock Nuts	M10	
5	Flange Hex Lock Nuts	M8	

## **(2) Tools required:**

- a. 19mm Socket Wrench;
- b. 13mm, 17mm Wrench;
- c. 5mm, 6mm L Type Wrench;



## **(3) Installation time:**

About 2 hours, 2-3 people may be needed. Installation time may differ according to your mechanical skill level.

(PLEASE VERIFY ALL PARTS ARE PRESENT AND READ INSTRUCTIONS CAREFULLY BEFORE STARTING INSTALLATION!)

To view the electronic version (BXG.2039-S), please scan the QR code.

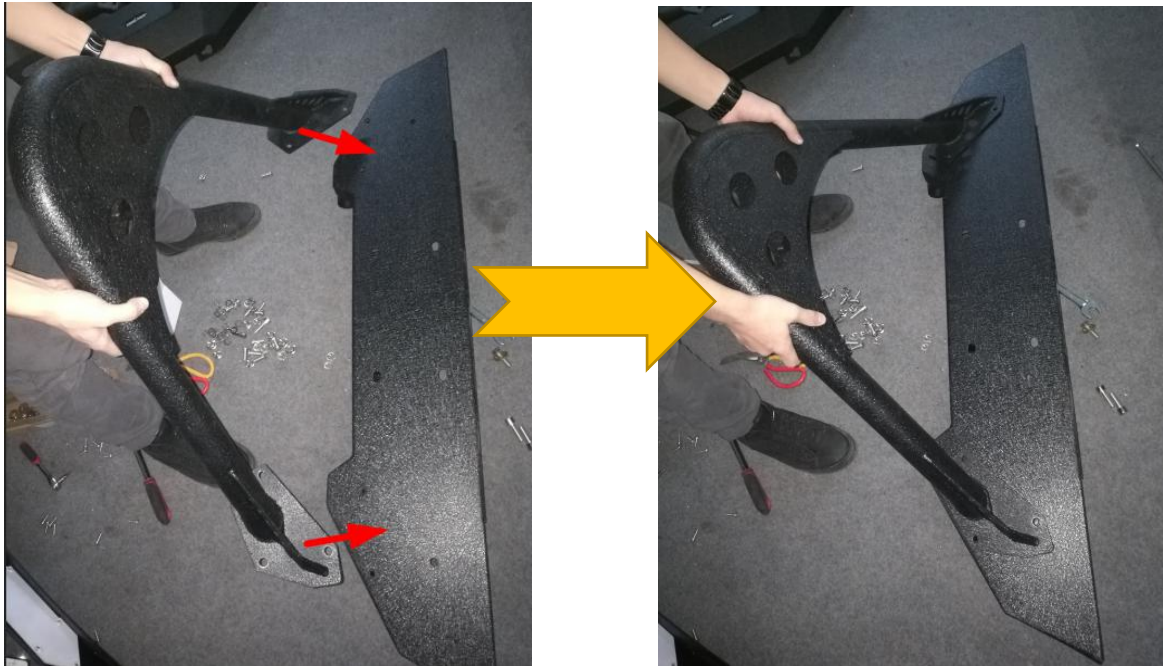


#### **(4) Installation instruction:**

##### Step 1:

Install the bull bar with the Button Head Socket Cap Bolts Screws (M10\*25), Split Lock Washer (D10), Flat Washer (M10\*25\*2), Flange Hex Lock Nuts (M10).

(1) Put the bull bar on the bumper.

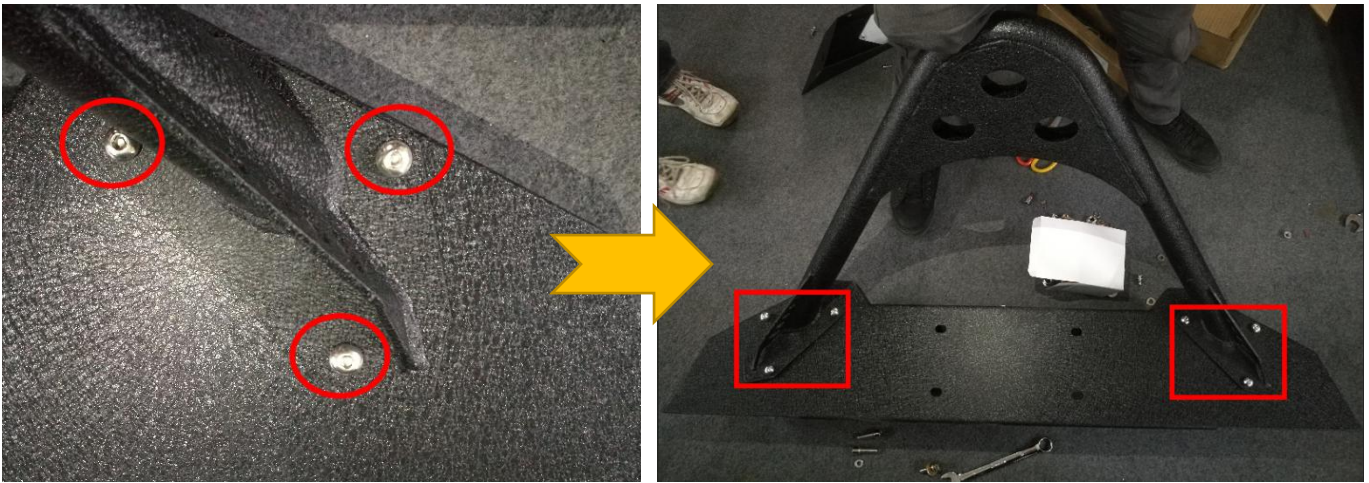


(2) Install and tighten the Button Head Socket Cap Bolts Screws (M10\*25), Flat Washer (M10\*25\*2), Flange Hex Lock Nuts (M10). As shown below.  
(Hex socket wrench or Use 6mm L Type wrench)



## Step 2:

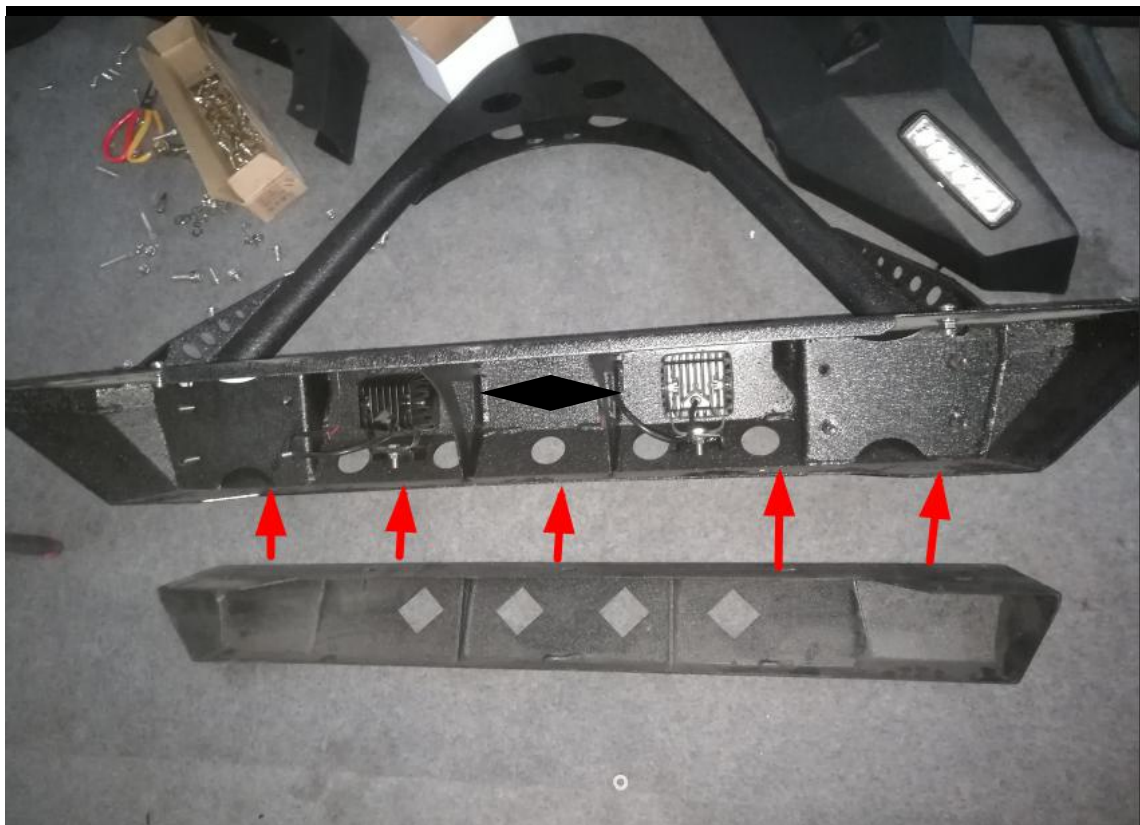
Install another side of the bumper in the same way.

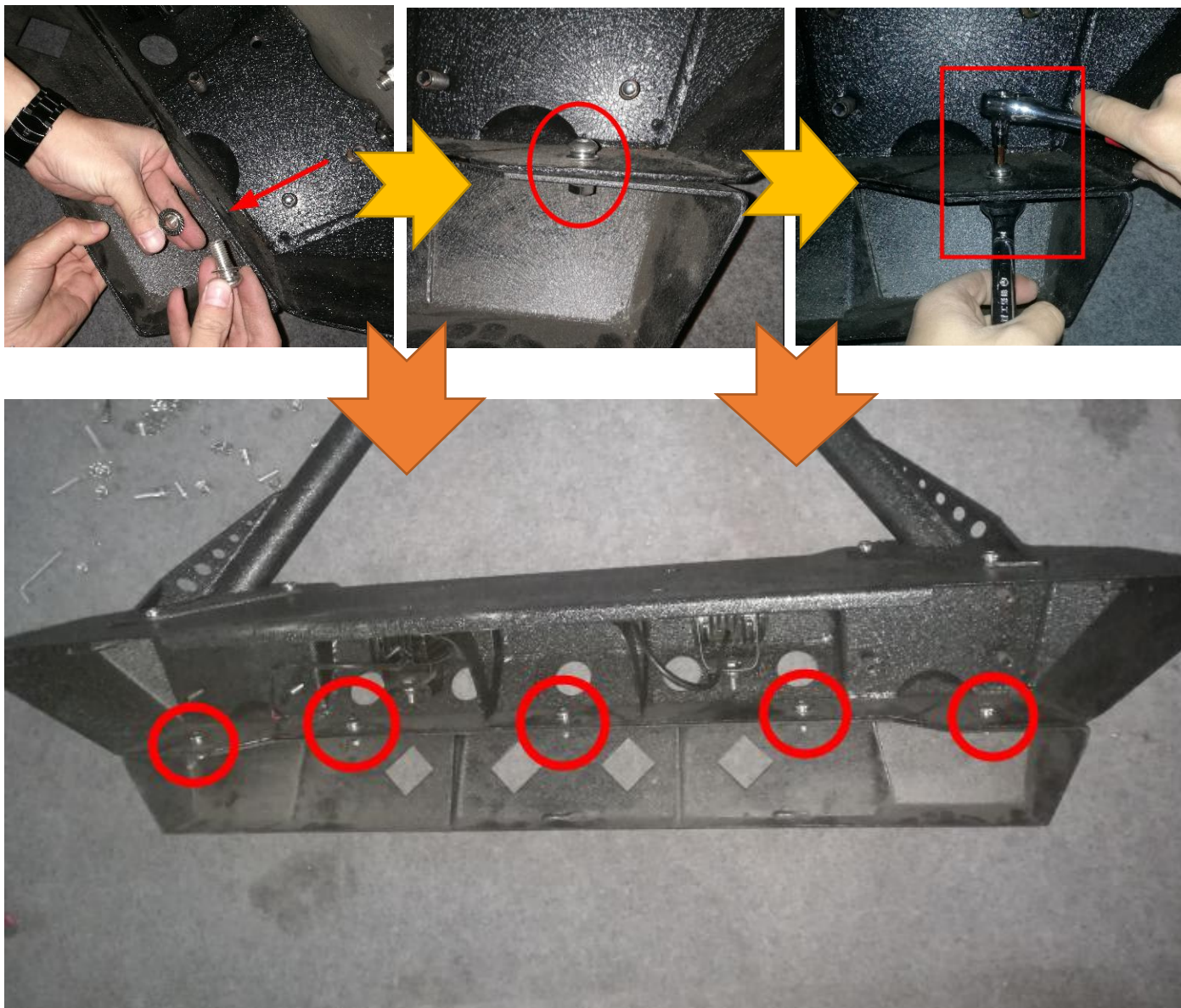


## Step 3:

Install the skid plate with Button Head Socket Cap Bolts Screws (M8\*16), Flange Hex Lock Nuts (M8).

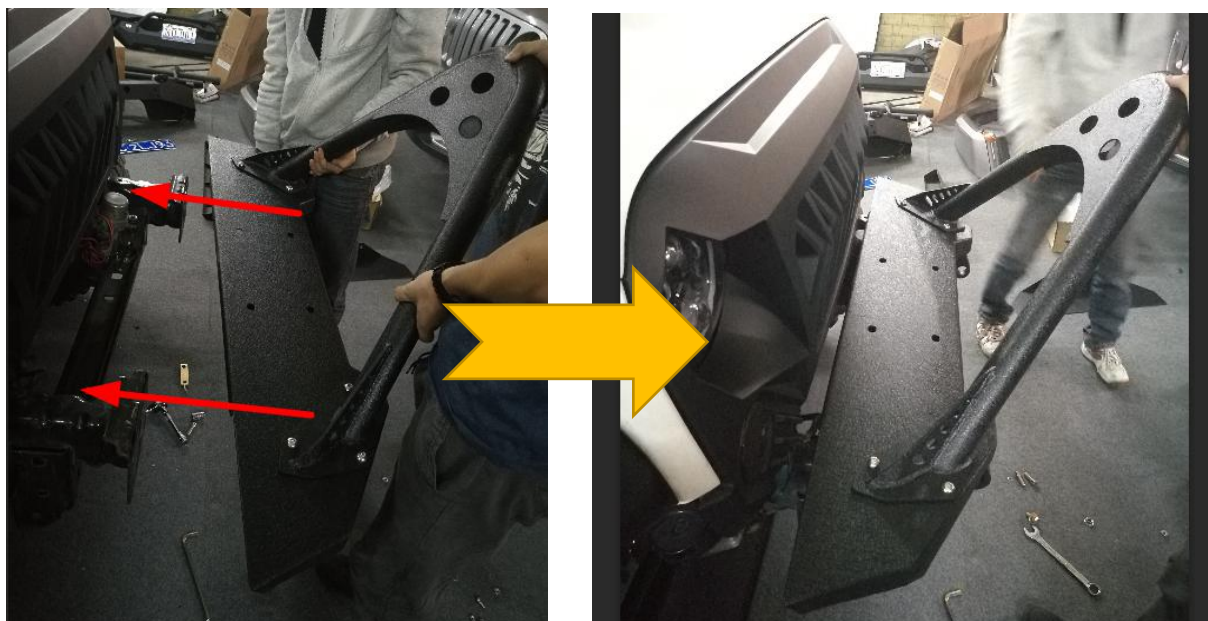
(Tools: 5mm L type wrench or Hex socket wrench and 17mm wrench)





Step 4:

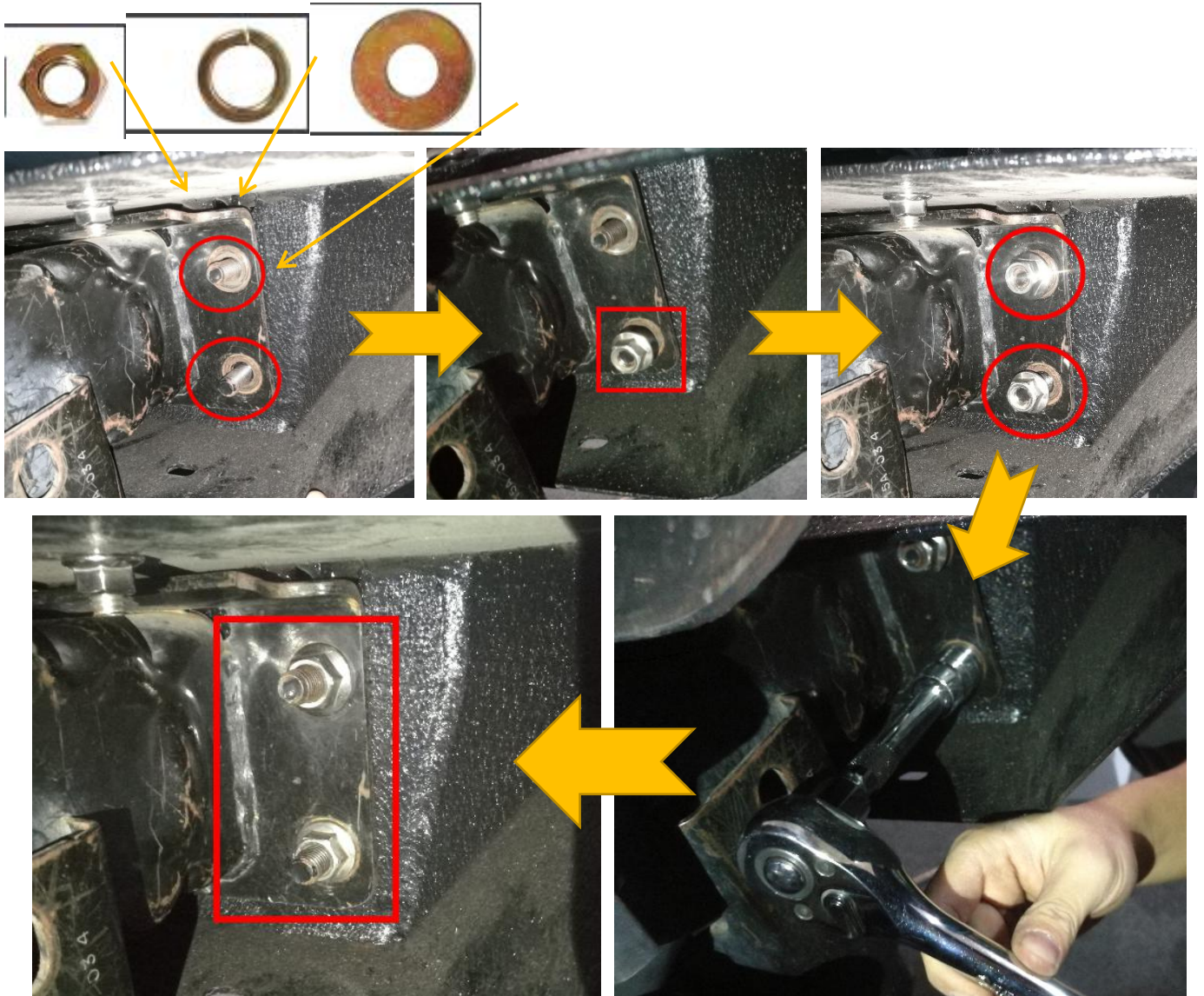
Install the bumper on the vehicle frame. As shown below.



## Step 5:

Tighten both side of the bumper with the Hex Bolt (M12\*35), Split Lock Washer (D12), Flat Washer (M12\*30\*2), Flange Hex Lock Nuts (M12).

As shown below.(Tools: 19mm socket wrench)



## Attention:

We just install the four nuts of this bumper, and it's enough for daily use. The picture shows on the RIGHT.



## Step 6:

After step5, and now install the D-rings on the bumper.

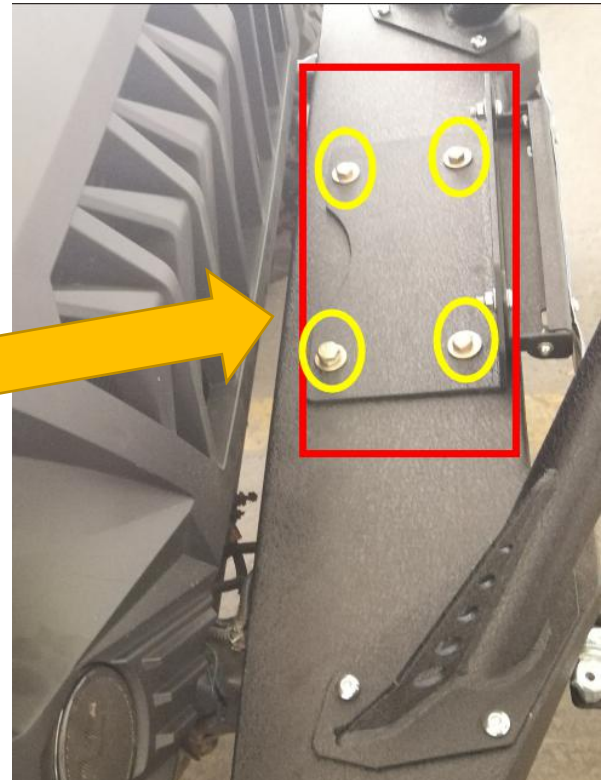


## Step 7:

The winch bracket is unnecessary to install, but if you want to install the Winch, you need the winch bracket to install your Winch together. And must install it before STEP 4.



And if no need to install the Winch, just use some bolts to install the winch bracket. As shown below.



Step 8:

Installation completed.



## **Attention:**

**1.The product parts in this instruction may differ slightly from the actual product contents but generally does not affect the installation of the product.**

**2.Please feel free to contact your distributor if you have any kind of question about your purchase.**

**GoogleHooke Road** to find your parts



@HookeRoad4x4

Post Your Jeep/Truck

w/Hashtag #hookerod to Win Discount Every Week