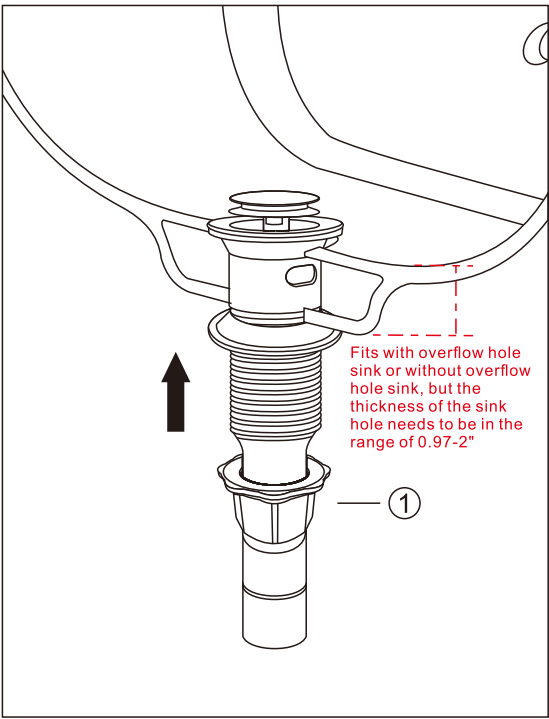


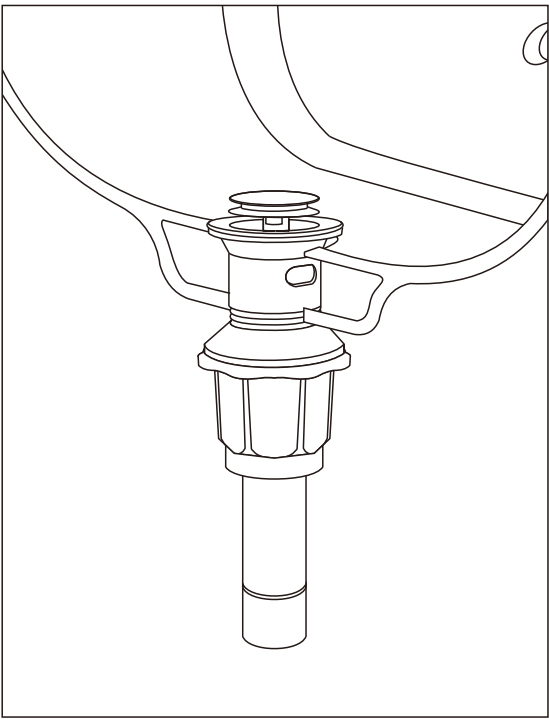
FORIOUS

4. Fasten the locknut to the drain and tighten.



-05-

FORIOUS



-06-

FORIOUS

TROUBLE SHOOTING

If the drain does not work properly, please take the following corrective actions:

1.PROBLEM
Pop-up stopper sticks and is hard to push down.
CAUSE
The pop-up bolt is ammed.
ACTION
Contact us to replace the pop-up bolt.

2.PROBLEM
The strainer basket and the pop-up stopper aren't straight.
CAUSE
The package may have been damaged during transit.
ACTION
Try straightening the part or contact us for a how-to video guide.

3.PROBLEM
The drain is leaking underneath the sink.
CAUSE
The gasket doesn't seal strong enough.
ACTION
Adjust the gasket or seal around it with the silicone caulk.

4.PROBLEM
There's a leak between the gasket and the locknut.
CAUSE
The gasket doesn't seal strong enough.
ACTION
Remove the locknut and the gasket, then use plumbers tape or silicone caulk on the thread. Check that the gasket is right side up before putting it back on the gasket along with the locknut.

5.PROBLEM
Size is not compatible.
CAUSE
This is made for a standard 13/4\"/>

6.PROBLEM
Drains slowly or water is unable to drain.
CAUSE
Debris is blocking the drain.
ACTION
Check and clean the drain.

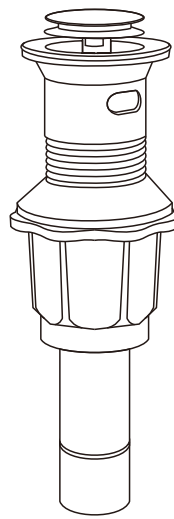


Scan the QR code to watch the video to help you install in seconds.

-07-



SINK DRAIN INSTALLATION GUIDE

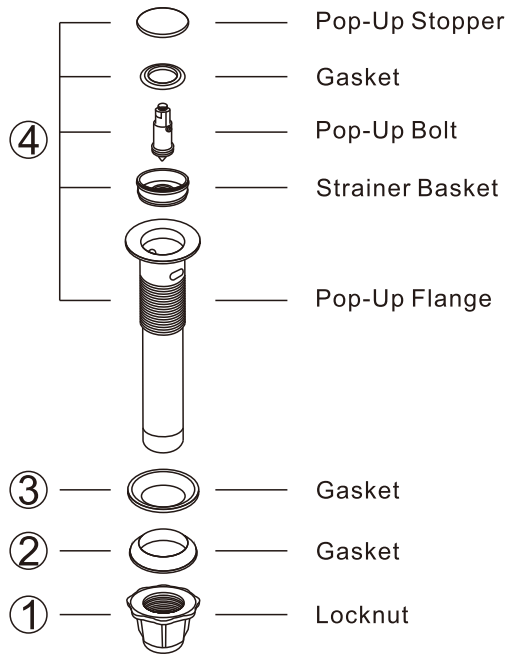


www.forious.com

service@forious.com

FORIOUS

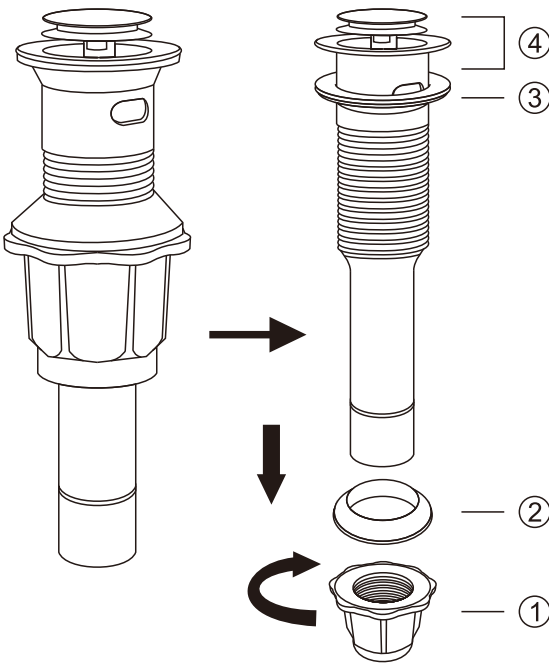
PRODUCT INTRODUCTION



-01-

FORIOUS

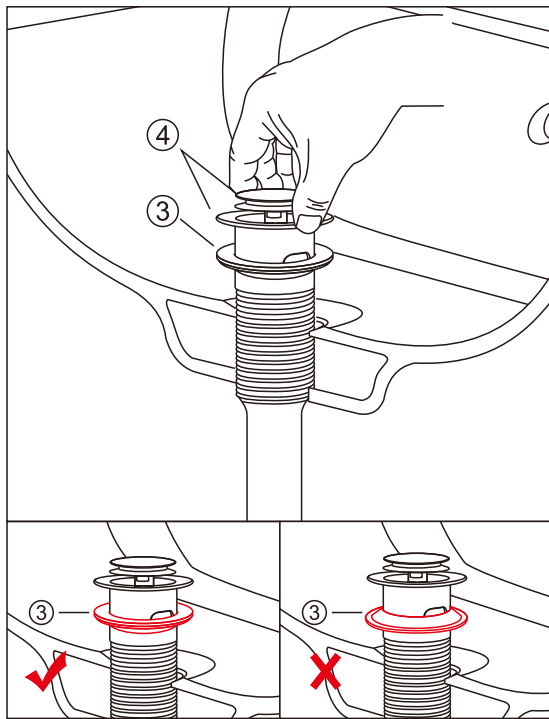
1.Remove locknut ①,gasket ② from the drain body④.



-02-

FORIOUS

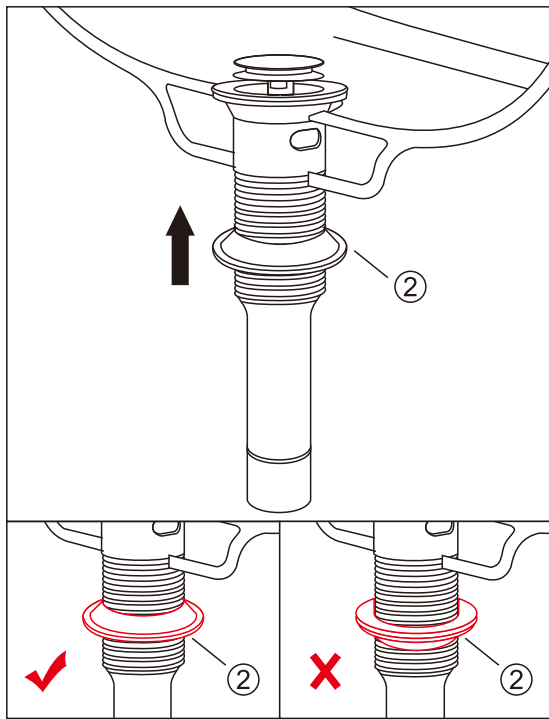
2. Install drain body④,with gasket③ attached, into the drain hole.



-03-

FORIOUS

3. Install gasket ② attached, into the drain hole under the sink.



-04-