



ELLIPTICAL  
TOTAL BODY  
OWNER'S MANUAL



<b>1.0</b>	<b>IMPORTANT SAFETY INSTRUCTIONS</b>	
	Read and Save These Instructions	1
	Setting Up the Elliptical Total Body	1
1.1	Installation Requirements	1
1.2	Preventative Maintenance and Cleaning Tips	1
<b>2.0</b>	<b>USING MANAGER PREFERENCE</b>	
2.1	Selecting US or Metric	2
2.2	Using CSafe	2
<b>3.0</b>	<b>GETTING STARTED</b>	
3.1	Pausing the Unit	3
3.2	Console Description	3
3.3	Manual Operation	3
3.4	Operating Programs	3
3.5	Heart Rate Control	4
3.6	Constant Watts	4
<b>4.0</b>	<b>EQUIPMENT SPECIFICATIONS</b>	
		5
<b>5.0</b>	<b>PARTS AND ASSEMBLY</b>	
5.1	Assembly	6
5.2	Parts List	9

# 1.0 IMPORTANT SAFETY INSTRUCTIONS

## READ AND SAVE THESE INSTRUCTIONS

- This Elliptical total body is intended for commercial use
- To insure your safety and protect the equipment, read all instructions before operating the MATRIX Elliptical total body.

When using an electrical product, basic precautions should always be followed, including the following:

### **DANGER** To reduce the risk of electric shock:

- Always unplug this equipment from the electrical outlet immediately after using and before cleaning.
- Your MATRIX Elliptical total body is self-generating (requiring no external power source) and must be pedaled to power up the console.

**WARNING** To reduce the risk of burns, fire, electrical shock or injury to persons that may be associated with using this product:

- An appliance should never be left unattended when plugged in. Unplug from outlet when not in use and before putting on or taking off parts.
- This product must be used for its intended purpose described in this Owner's Guide. Do not use other attachments that are not recommended by the manufacturer. Attachments may cause injury.
- To prevent electrical shock, never drop or insert any object into any opening.
- Do not remove the side covers. Service should only be done by an authorized service technician.
- Never operate the Elliptical total body with the air opening blocked. Keep the air opening clean, free of lint, hair and the like.
- Never operate product if it has damaged cord or plug, if it is not working properly, if it has been damaged, or immersed in water. Return the unit to a service center for examination and repair.
- Do not carry this unit by supply cord or used cord as handle.
- Keep any power cord away from heated surfaces.
- Keep hands and loose clothing away from moving parts.
- Close supervision is necessary when Elliptical total body is used by or near children, invalids, or disabled persons.
- Do not use outdoors.
- Do not operate where aerosol (spray) products are being used or where oxygen is being administered.
- To disconnect, turn all controls to the off position, then remove plug from outlet.
- Comment this Elliptical total body to a properly grounded outlet only.

**CAUTION** If you experience chest pain, nausea, dizziness or shortness of breath, STOP exercising immediately and consult a physician before continuing.

## SETTING UP THE ELLIPTICAL TOTAL BODY

Assembly instructions have been provided with your Elliptical total body. For your safety, please read and follow each of the steps in the assembly guide. To obtain a copy of the assembly guide, please contact MATRIX FITNESS SYSTEMS.

### 1.1 INSTALLATION REQUIREMENTS

Your MATRIX Elliptical total body is designed to be self contained and does not require a power supply to operate.

**CAUTION** Use of the wrong power supply may cause damage to your Elliptical total body and/or entertainment device.

Locate a level stable surface to position Elliptical total body. The Elliptical total body has six leveling feet located under the foot support. If your Elliptical total body wobbles in the location where you intended to use it, loosen the lock nut on the adjusting foot and adjust the feet until stable. Once level, lock the adjusting feet by tightening the lock nut to the frame.

### 1.2 PREVENTATIVE MAINTENANCE AND CLEANING TIPS

Preventative maintenance and daily cleaning will prolong the life and look of your MATRIX Elliptical total body.

Please read and follow these tips.

- Position the equipment away from direct sunlight. The intense UV light can cause discoloration or plastics.
- Locate your equipment in an area with cool temperatures and low humidity.
- Clean with a soft 100% cotton cloth.
- Clean with non-ammonia based cleaners.
- Wipe foot pads, handles, heart rate grips, and handlebars clean after each use.
- Do not pour liquids directly onto your equipment. This can cause damage to the equipment and in the same cases electrocution.
- Check pedal motion and stability.
- Adjust leveling feet when equipment wobbles or rocks.
- Maintain a clean area around equipment free from dust and dirt.



# 2.0 USING MANAGER PREFERENCE MODE

## 2.1 USING MANAGER PREFERENCE MODE

Your MATRIX Elliptical total body is designed to allow you to customize settings for your preferences and diagnostics. The Manager Preference Mode can only be accessed while the Elliptical total body is powered up. Follow the instructions to adjust the Elliptical total body computer for your desired setting.

**STEP 1** Power up the Elliptical total body and Hold the UP and DOWN arrow keys for 3 seconds. The word Manager will appear in the alphanumeric window and will enter into the Manager Preference Setting automatically after 3 seconds. Continue to pedal until finished.

**STEP 2** Select information you would like to view or change from the following list, by using the UP or DOWN arrows. Press ENTER to select.

Manager preference mode will allow you to view and set the following.

DISPLAY CODE: INFORMATION	USER DEFINABLE	DEFAULT VALUE	MIN.	MAX.
Manager	Y			
P0: Maximum program time	Y	95 min	5	95
P1: Default time	Y	20 min	5	95
P2: Default level	Y	L1	L1	L20
P3: Default weight	Y	150 lbs	80 lbs	400 lbs
P4: Speed	Y	Miles	Miles	KM
P5: Machine	Y	BI	BI	RE,EL
P6: TV IR	Y	On	On	OFF
P7: Cardio Entertainment	Y	On	On	OFF
P8: Accumulated Distance				
P9: Accumulated Time				
P10: Software Version				

**STEP 3** Use UP or DOWN arrows to increase or decrease values.

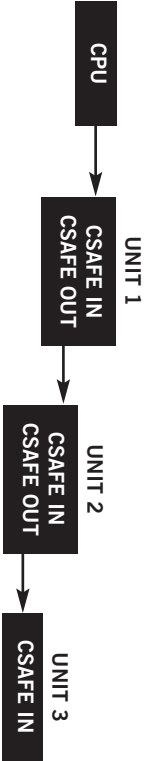
**STEP 4** Press START to save and enter selected values and exit to STEP 2.

**STEP 5** Exit by pressing Start. Screen will reset to Start up.

## 2.2 USING CSAFE

Matrix is the leading in entertainment availability. On the back of the console are three RJ45 receptacles. They are marked CSAFE IN, CSAFE OUT, and ENTERTAINMENT.

Use the CSAFE in to plug in an CSAFE device using the RJ45 connector CSAFE out allows CSAFE products to be daisy chained together from one unit to the next. The connection is as follows:



## 3.0 USING THE ELLIPTICAL TOTAL BODY

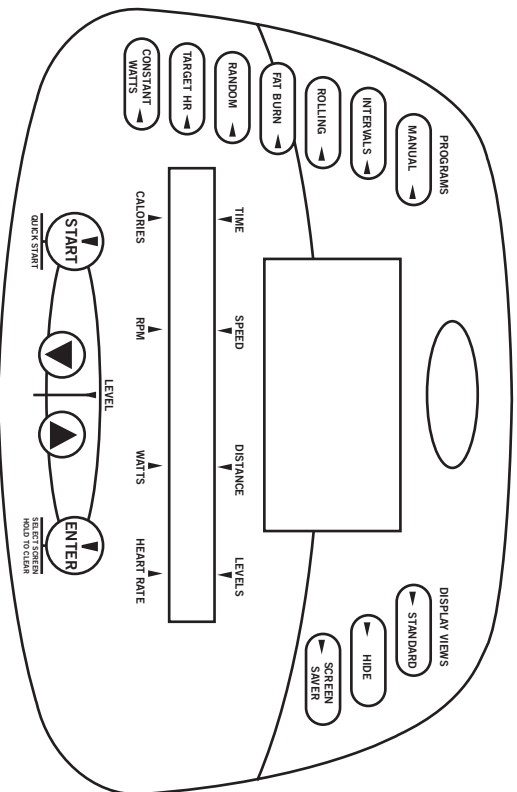
The E5x has been designed for users of all fitness levels. The E5x has linked upper and lower body motion designed to give a complete low impact body workout. The stride length is 22" long and over 8" of lift to accommodate even the tallest user.

The E5x has wide pedals and sturdy handrails for easy mounting. After stepping on the Elliptical Total Body, face the console, hold on to the center handrail or the left and right upper body grips. Use pedaling motion similar to a bike to begin exercising. Follow instructions to program your favorite workout.

### 3.1 PAUSING THE UNIT

Your console has the ability to have a 30 second pause feature. On the back of the console is a battery cover. If the pause feature is not working try replacing the 9 volt battery by removing the screw and remove the battery cover. Replace the battery and cover.

### 3.2 CONSOLE DESCRIPTION



**PROGRAMS** Simple program view and selection buttons. MATRIX Elliptical total body's feature seven programs.

**START/QUICK START** One Touch Quick Start and Start any time during preference selection.

**UP/DOWN** Easy information and level selection.

**ENTER/SELECT SCREEN/RESET** This multi-function button enters information when setting up programming options, toggles information displayed and if held down for 5 seconds resets the Elliptical total body to Start-up mode.

**DISPLAY VIEW** These three buttons allow the user to customize the way the unit's lights are displayed.

### 3.3 MANUAL OPERATION

**MATRIX** design makes using the programs as easy as one touch of a button.

**QUICK START** Start pedaling and press **QUICK START** to begin workout.

**MANUAL MODE** allows you to enter desired time, level and weight.

**STEP 1** Select **MANUAL** program button on left of panel.

Press **ENTER** or wait 5 seconds.

Selecting **START** will start program.

**STEP 2** Select **TIME** by using the **UP** or **DOWN** arrow keys.

Press **ENTER** or wait 5 seconds.

Select **START** will start program.

**STEP 3** Select **LEVEL** by using **UP** or **DOWN** arrow keys. You can change the level at any time during workout.

Press **ENTER** or Wait 5 seconds.

Select **START** will start program.

**STEP 4** Select Weight by using the **UP** or **DOWN** arrow keys.

Press **START** or **ENTER** to begin workout.

Display, **TIME**, Starting 3, Starting 2, Starting 1

### 3.4 OPERATING LEVEL BASED PROGRAMS

Your MATRIX Elliptical total body offers versatile programs to keep the user motivated. The following instructions will guide you through simple steps to select **INTERVALS**, **ROLLING**, **FAT BURN** and **RANDOM** ? programs.

**STEP 1** Select the **PROGRAM** button on left of panel.

Press **ENTER** or wait 5 seconds.

Selecting **START** will start program.

## 3.0 USING THE ELLIPTICAL TOTAL BODY

### STEP 2 Select TIME by using the UP or DOWN arrow keys.

Press ENTER or wait 5 seconds.  
Select START will start program.

### STEP 3 Select LEVEL by using UP or DOWN arrow keys. You can change the level at any time during workout.

Press ENTER or Wait 5 seconds.  
Select START will start program.

### STEP 4 Select Weight by using the UP or DOWN arrow keys.

Press START or ENTER to begin workout.  
Display, TIME, Starting 3, Starting 2, Starting 1

## 3.5 HEAT RATE CONTROL

For your convenience, MATRIX FITNESS Cycles come standard with digital contact heat rate sensors and POLAR telemetry compatible.

Locate the metal sensors on the handrail or the Cycle. Notice there are two separate pieces of metal on each grip. You must be making contact on both pieces of each grip to get an accurate heart rate reading. You can grab these sensors in any program to view your current heart rate located in the lower left hand window marked HEART RATE.

### Heart Rate Program

Follow these easy Steps to enter into the Heart Rate Program.

### STEP 1 Select the PROGRAM button on left of panel.

Press ENTER or wait 5 seconds.  
Selecting START will start program.

### STEP 2 Select AGE by using the UP or DOWN arrow keys.

Press ENTER or wait 5 seconds.  
Select START will start program.

### STEP 3 Select PERCENT by using UP or DOWN arrow keys.

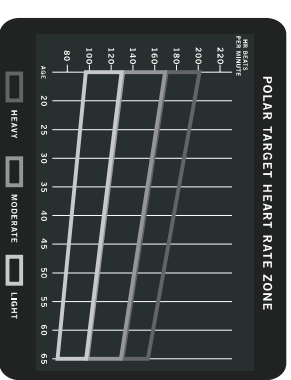
Press ENTER or Wait 5 seconds.  
Select START will start program.

### STEP 4 Select TIME by using UP or DOWN arrow keys.

Press ENTER or Wait 5 seconds.  
Select START will start program.

### STEP 5 Select Weight by using the UP or DOWN arrow keys.

Press START or ENTER to begin workout.  
Display, TIME, Starting 3, Starting 2, Starting 1



## 3.6 CONSTANT WATTS

CONSTANT WATTS program is a unique program that allows you to vary your cadence or RPM and the Cycles resistance will adjust accordingly to your selected goal. The quicker you pedal the less resistance for the goal selected.

Follow these easy Steps to enter into the Heart Rate Program.

### STEP 1 Select the PROGRAM button on left of panel.

Press ENTER or wait 5 seconds.  
Selecting START will start program.

### STEP 2 Select WATTS by using the UP or DOWN arrow keys.

Press ENTER or wait 5 seconds.  
Select START will start program.

### STEP 3 Select TIME by using UP or DOWN arrow keys.

Press ENTER or Wait 5 seconds.  
Select START will start program.

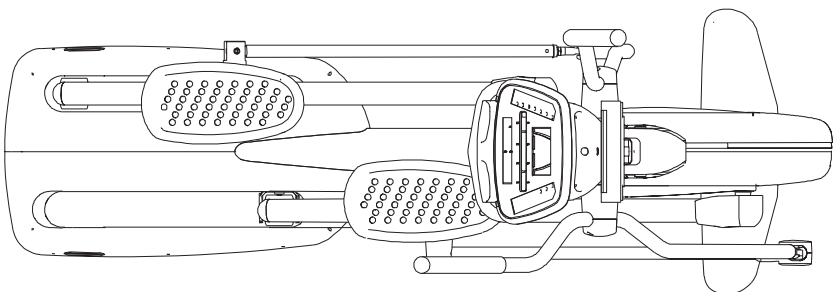
### STEP 4 Select Weight by using the UP or DOWN arrow keys.

Press START or ENTER to begin workout.  
Display, TIME, Starting 3, Starting 2, Starting 1

4.0 ELLIPTICAL TOTAL BODY SPECIFICATIONS

> ELLIPTICAL TRAINER

MX-E5x



SPECIFICATIONS

Product Name	E5x
Foot Print	inches = 72" x 85" x 29" cm = 182.9 x 215.9 x 73.6
Weight	350 lbs 158.8 kg
Max User Weight	400 lbs = 181 kg
Stride Length	21"
Frame Construction	Aluminum/Steel
Self Contained	Yes
Resistance Type	Generator
Resistance Level	20
Dual Action	Yes

PROGRAMS

One Button Quick Start	Yes
Random (20 profiles)	Yes
Target Heart Rate	Yes
Interval	Yes
Constant Watts	Yes
Rolling	Yes
Fat Burn	Yes

CLEANING BRUSH

Track Cleaning	Yes
----------------	-----

PEDAL

Self Leveling	Yes
Pedal Size	16" x 7"
Distance Between Pedals	3.5"

HEART RATE

Wireless Heart Rate	Yes
Contact Heart Rate	Yes

ENTERTAINMENT READY

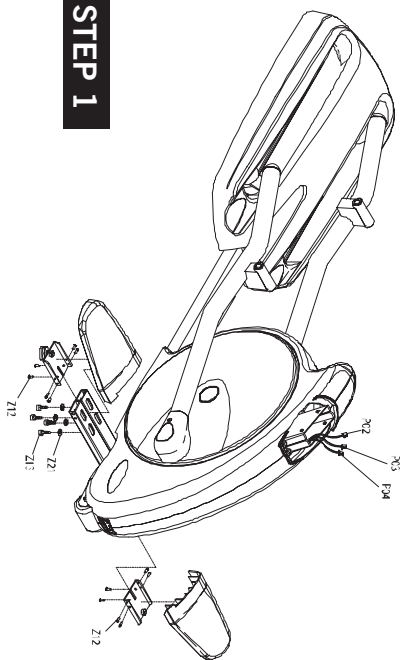
Coaxial Cable Connection	Yes
AC TV Power Connection	Yes
Monitor Mount	Yes



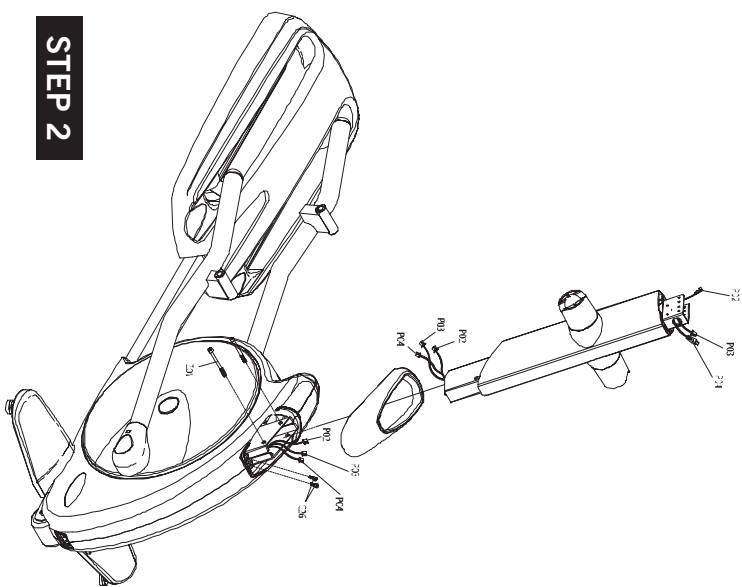
5.1) ELLIPTICAL TRAINER FASTENERS & ASSEMBLY TOOLS  
MX-E5x

NO.	SKETCH	DESCRIPTION	QTY	NO.	SKETCH	DESCRIPTION	QTY
Z01		BUTTON HEAD BOLT(M10x75L)	2	Z13		BUTTON HEAD BOLT(M6x15L)	8
Z02		BUTTON HEAD BOLT(M6x15L)	4	Z21		FLAT WASHER (6,4x11x1,60)	8
Z03		CROSS FLAT HEAD BOLT(M6x12L)	8	Z22		BUTTON HEAD BOLT(M6x15L)	6
Z04		BUTTON HEAD BOLT(M6x8L)	2	N25		BUTTON HEAD BOLT(M5x12L)	4
Z05		WAVEY WASHER (20,5x29x1,50)	2	C23		BUTTON HEAD BOLT(M6x55L)	4
Z06		BUTTON HEAD BOLT(M8x10L)	4	C26		BUTTON HEAD BOLT(M8x35L)	4
Z07		BUTTON HEAD BOLT(M8x20L)	2	Z14		4mm ALLEN WRENCH	1
Z08		BUTTON HEAD BOLT(M10x40L)	2	Z15		5mm ALLEN WRENCH	1
Z09		NYLON NUT(M10x1,5P)	2	Z16		6mm ALLEN WRENCH	1
Z10		BEARING ROD PIN	2	Z17		SOCKET WRENCH	1
Z11		BUTTON HEAD BOLT(M4x15L)	4	Z18		PHILLIPS DRIVER(4,5x50mm)	1
Z12		BUTTON HEAD BOLT(M8x12L)	12				

STEP 1



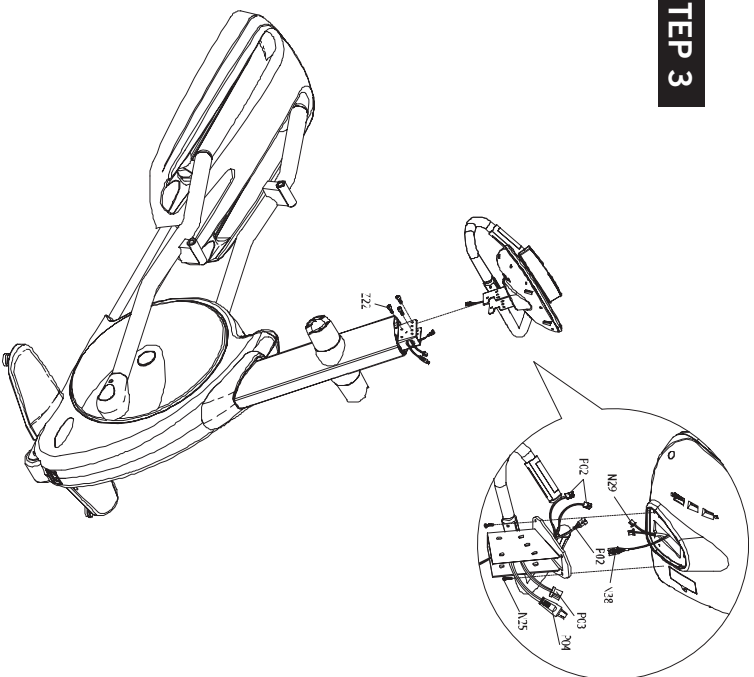
STEP 2



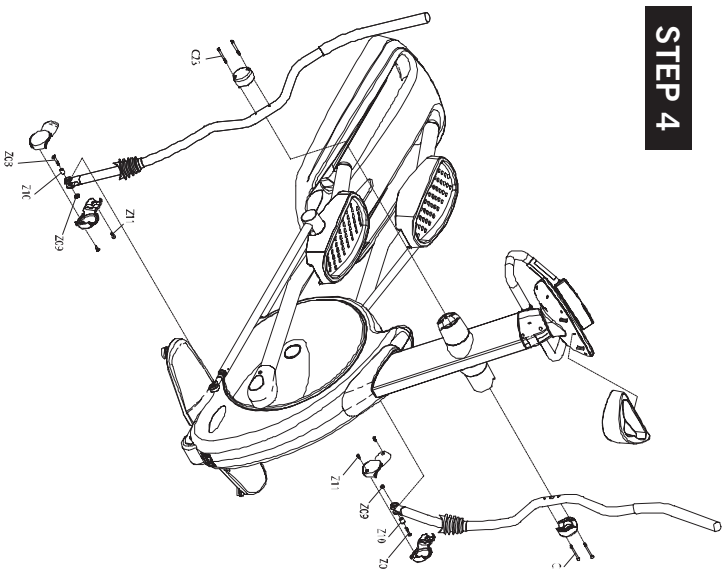
## 5.1) ELLIPTICAL TOTAL BODY FASTENERS & ASSEMBLY TOOLS

MX-ESX

### STEP 3

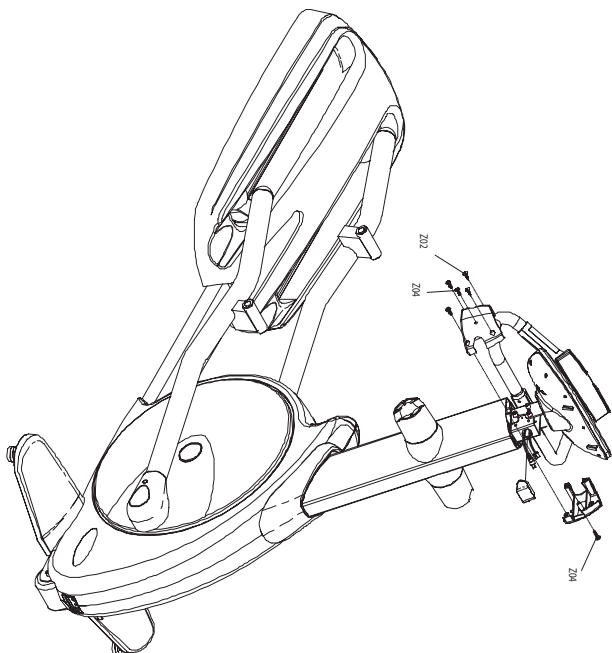


### STEP 4

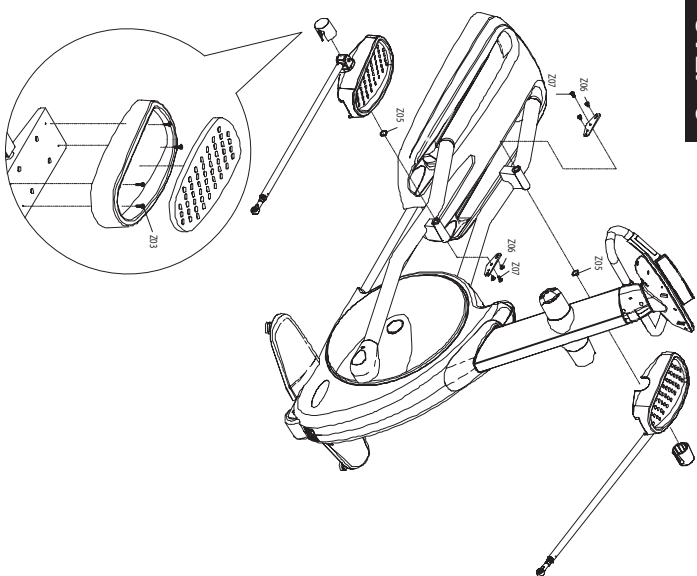


**5.1) ELLIPTICAL TOTAL BODY FASTENERS & ASSEMBLY TOOLS**  
MX-ESX

**STEP 5**



**STEP 6**



5.0 PARTS & ASSEMBLY

5.2) ELLIPTICAL TOTAL BODY PARTS LIST

REF #	DESCRIPTION	SPECIFICATION	REF #	DESCRIPTION	SPECIFICATION
AB1	FRAME WELDING PICTURE(PAINT)	MX-E5X(E/P23B-1US)(BLACK)	E29	LEFT PEDAL WASHER	RUBBER BLACK
AB2	FRONT COVER ARC FIXING PLATE(PAINT)	EP23-1(BLACK)	E31	FLAT WASHER	25.5X38X2.0T
AB3	ADJUSTABLE LEVELER FIXING PLATE	MX-E5X(E/P23B-1US)(BLACK)	E32	C CLIP EXTERNAL	S-25
AC1	CONSOLE MAST WELDING PICTURE(PAINT)	MX-E5	E33	FLAT WASHER	10.2X22X2.0T
AC2	FRONT HANDLEBAR SET(CONTAIN HPG)	MX-E5X(E/P23B)SENSOR W/TEXTURE	E34	HYPOTENUSE INNER-HEX SOCKET SCREW	M8X1.25PX12L
AC2	TV BRACKET SET W/CABLES	MX-E5X(E/P23B)-NEW	E35	BALL BEARING(BR6002ZZ)	6002ZZ(BR6002ZZ)
AE1	RIGHT PEDAL ARM SET	MX-E5X(E/P23B)	E36	OVAL PHILLIP SCREW	M5X0.8PX8L
AE2	LEFT PEDAL ARM SET	MX-E5X(E/P23B)	E37	ROUND HEX SOCKET SCREW	M10X1.5PX60L(CHROMATE TREATMENT)
AG1	RIGHT HANDLEBAR SET	MX-E5X(E/P23B)	E38	NYLON NUT	M10X1.5P(CHROMATE TREATMENT)
AG2	LEFT HANDLEBAR SET	MX-E5X(E/P23B)	E39	FLAT WASHER	15.2X20X3.0T
AH1	LINK ARM SET	MX-E5X(E/P23B)	E40	PLAIN HEX SOCKET SCREW	M5X0.8PX12L(BED)
AN1	CONSOLE SET CB32B-1US	CB32B-1US(MATRIX VX)H006 S206 MILE	E41	WAVE SPRING	25.5X34X2T NYLON+BRISULPHIDE MO.
AN1	CONSOLE SET CB32B-KM	CB32B-K(MMATRIX VX)H006 S206 METRIC	E42	BRUSH	PPE/P23-E42D)
AR6	CENTRALAXLE SLEEVE SET(A)	MX-E5X(E/P23-AR6A)	E43	PEDAL ARM BRASS BUSHING	POWDER METALLURGY
AR7	CENTRALAXLE SLEEVE SET(B)	MX-E5X(E/P23-AR7A)	E44	HEX NUT	M14X1.5PX7H
AT1	IDLER SET	MX-E5X(E/P23B)	E46	CONNECTING PLATE BACK GLUE	FOAM 1.0T
AZ1	HARDWARE KIT	MX-E5X(E/P23B-1US)	E47	FLAT WASHER	10.2X25X1.5T
B35	FRONT ROLLER AXLE	SS41	E49	SELF LOCKING NUT	RB41-D13D
B36	TRANSPORTS WHEEL	NYLON+30%FIBER INCLUDED	E50	GUIDE RAIL	M8X1.25P W/NYLON INSERT
B41	ADJUSTABLE LEVELER	NO TURRN	F01	OVAL PHILLIP SCREW	AL(HARD MEMBRANE PLATING)
B43	OVAL-TAPPING PHILLIP SCREW	M4X1.5L	F02	GUIDE RAIL RUBBER WASHER	M5X0.8PX12L
B44	PLAIN HEX SOCKET SCREW	M8X1.25PX15L	F03	SWIVEL BASE SET	RUBBER
B45	OVAL PHILLIP SCREW	M5X0.8PX12L(BED)	G07	SWIVEL BASE	MX-E5X(E/P23B)
B47	BACKING SHEET FIXING PLATE	SPC 2.0T	G08	SWIVEL BASE SLEEVE COVER	AL(6063)(SILVER GRAY)
B48	C CLIP	WUSN-4039	G10	BALL BEARING	AL(6063)(SILVER GRAY COLOR)
B49	GRIP	PP	G11	C CLIP INTERNAL	6006ZZ
B50	HEX BOLT	M10X1.5PX65L	G14	ARC WASHER	R-55
C06	HANDLEBAR SWIVEL AXLE	SCM21	G18	HIGH ELASTICITY FOAM	8.4X20X1.5T(BLACK ZINC PLATING)
C07	CONSOLE MAST SLEEVE TUBE(PAINT)	MX-E5(SILVER GRAY)	G19	END CAP(IRON)	31D*3T*483L(BLACK ROUGH FACE)
C12	FRONT HANDLEBAR FIXING PLATE	MX-E5(BLACK)	H05	LINK ARM SWIVEL AXLE	(IRON)
C17	SPACE RING	SS41	H07	BUSHING	SCM21
C22	OVAL-TAPPING PHILLIP SCREW	M4X2.5L	H08	SHAFT END BEARING	FE POWDER METALLURGY
C23	ROUND HEX SOCKET SCREW	M8X1.25PX65L	H11	HEX NUT	PHS 16(M16X2)
C26	ROUND HEX SOCKET SCREW	M8X1.25PX35L	H12	SLEEVE	M16X2.0P*7.0L(ZINC PLATING)
C27	SNUG NUT	M33X2.0PX15T	J01	CONNECTING PLATE(PAINT)	MX-E5(SILVER-GRAY COLOR)
C32	HYPOTENUSE INNER-HEX SOCKET SCREW	M8X1.25PX15L(BED)	J02	CRANK PIN	SS41
C33	ARC WASHER	8.2X18X1.5T	J05	PLAIN PHILLIP SCREW	SCM21
C50	CONSOLE MAST WASHER	RUBBER(HARDNESS:30°±5°)	J06	FLANGE HEX NUT	M5X0.8PX15L
E08	ROLLER SET	MX-E5X(E/P23B)	J07	SPRING	M16X1.5P(CARBONIZATION)
E09	RIGHT PEDAL	MX-E5X(E/P23B)	J08	TRAY WASHER	SWP
E10	LEFT PEDAL	ABS BLACK(EP23-E09B)	N04	CONSOLE CONTROL BOARD	16.2X31.5X1.5T
E22	ROUND HEX SOCKET SCREW	ABS BLACK(EP23-E10B)	N04	CONSOLE CONTROL BOARD	MX-U5 H006 S206
E23	COOPER BUSHING II	M8X1.25PX65L(BED)	N06	MEMBRANCE KEY(LEFT)	MX-U5 H006 S206
E26	PIVOT-TUBE CONNECTING PLATE AXLE	POWDER METALLURGY	N06	MEMBRANCE KEY(LEFT)	MATRIX U5W/R5X/E5X
E27	COOPER SLEEVE	SS41(EP23-E26B)	N07	MEMBRANCE KEY(RIGHT)	MATRIX U5W/R5X/E5X
E28	RIGHT PEDAL WASHER	POWDER METALLURGY			
		RUBBER BLACK			

## 5.2) ELLIPTICAL TOTAL BODY PARTS LIST

REF #	DESCRIPTION	SPECIFICATION	REF #	DESCRIPTION	SPECIFICATION
N08	MEMBRANCE KEY(BELOW)	MATRIX U5/R5/E5	Q50	OVAL-TAPPING PHILLIP SCREW	M4X1.2L
N08	MEMBRANCE KEY(BELOW)	MATRIX U5/R5/E5	Q51	OVAL-TAPPING PHILLIP SCREW	M4X1.0L
N10	BOTTLE HOLDER	VISION CARBON-GRAY COLOR	Q52	C CLIP	WUSN-4039
N10	BOTTLE HOLDER	VISION CARBON-GRAY COLOR	R03	DRIVE MAIN AXLE SET	MX-E5XIEP23B)
N20	INSIDE RECEIVER(2-IN-1)	Model 3500	R04	PULLEY SET	MX-E5XIEP23B)
N20	INSIDE RECEIVER(2-IN-1)	Model 3500	R09	7254 POLY-V PULLEY	FC20
N21	PULSE GRIP SET	MX-E5XIEP23B) W/TEXTURE	R10	SECOND STAGE POLY V BELT	480-J8(CARLISLE)
N26	ROUND PHILLIP SCREW	M3X0.5PX35L	R11	POLY-V BELT	430-J12(CARLISLE)
N27	HEX NUT	M3X0.5P	R16	DUAL-HEAD ROUND KEY	6X6X20L
N49	OVERLAY	MX U5/R5/E5(MATRIX VY)(USA)	R40	DUAL-HEAD ROUND KEY	6X6X14L
N50	OVERLAY	MX U5/R5/E5(MATRIX VY)(METRIC)	R48	SNUG NUT	M30X1.5PX8T
N51	MEMBRANCE KEY(RIGHT)	MATRIX U5/R5/E5(MATRIX VY)(METRIC)	S01	ECB CONTROL GENERATOR(JM07-AM2A)	210 NOT CE MX/600 SERIES(JM07-AM2A)
P02	CONSOLE WIRE	1550(XAP-07V-1+H6657P-2+H6657R1-8)	S09	CONTROL SET JE07002	U5 R5 E5 H002(C/B32-AS08CC)
P03	E-PORT POWER CONNECTING WIRE	1550(XAP-02V-1+H6657P-2)	S10	HEX NUT	3/8"-26UNCX4H
P04	E-PORTTV SIGNAL WIRE	1550(RG-6)X2 W/ADAPTERX2+NUT	S12	OVAL PHILLIP SCREW	M5X0.8PX12L
P05	ELECTRONIC CONTROL SET CONNECT WIRE	450(3.96-5P+HL20P-03)	S13	ROUND HEX SOCKET SCREW	M5X0.8PX12L
P06	POWER RESISTANCE	400W107 650(3.96-4P WHITE VH)	S14	FLAT WASHER	5.3X10X1.0T
P07	HAND PULSE CABLE	700 (H6657R1-2+110 F SOCKET)	S50	NUT RIM HEX HEAD	3/8"-26UNF
P11	KSS FIXED BASE	HC-101(KSS)(PD02HC101)	S51	NYLON NUT	1/4"-20UNC(BED)
P13	END BOOT	(KSS)EP-1113(BUY-OUT)	S52	EYE HOOK SCREW	1/4"-20UNCX70L EYE HOLE10
P14	F-SHAPED MID CONNECTOR TRANSFORMER	F-A005	S53	EYE HOOK COVER(BED)	1.5T SPC(CB32-S05B)
P16	FERRITE CORE	FH0900B-2	S54	FLAT WASHER	1/4"X15X1T
P19	POWER CONNECTION CHANGING WIRE	900(XAP-02V-1+H6657R1-2)	T10	SELF LOCKING NUT	M10X1.5P W/NYLON INSERT
P20	E-PORTCIRCUIT BOARD SET	W/ PCB BOARD DC BRACKET & ADAPTER	T11	HEX NUT	M8X1.25P(BED)
Q01	RIGHT COVER SET	MX-E5XIEP23B)	V04	SIDE COVER DECAL	MATRIX(U5/R5/E5 USE THE SAME)
Q02	LEFT COVER SET	MX-E5XIEP23B)	V14	INSTRUCTION DECAL	WHITE BASE W/BLACK WORD
Q03	TV RACK END CAP	PVC(EP23-Q03D)	X02	SHIPPING BOX SET	MX-E5XIEP23B-1US)
Q04	RIGHT CONSOLE MAST SLEEVE	ABS(BLACK)(EP23-Q04D)	X02	ROUND HEX SOCKET SCREW	M10X1.5PX75L
Q05	LEFT CONSOLE MAST SLEEVE	ABS(BLACK)(EP23-Q05D)	Z01	OVAL-TAPPING PHILLIP SCREW	M5X0.8PX12L
Q06	RIGHT CONSOLE MAST END COVER(PAINT)	MX-E5(VISION CARBON-GRAY COLOR)	Z02	PLAIN PHILLIP SCREW	M5X0.8PX8L
Q07	LEFT CONSOLE MAST END COVER(PAINT)	MX-E5(VISION CARBON GRAY COLOR)	Z03	OVAL PHILLIP SCREW	M5X0.8PX12L
Q08	CONSOLE MAST LOWER END SLEEVE	PVC(EP23-Q08E)	Z04	WAVE SPRING	20.5X29X1.5T NYLON+BISULPHIDE MO.
Q09	OUTSIDE LINK ARM END COVER	ABS BLACK	Z05	OVAL HEX SOCKET SCREW	M8X1.25PX10L
Q10	INSIDE LINK ARM END COVER	ABS BLACK(EP23-Q10D)	Z06	OVAL HEX SOCKET SCREW	M8X1.25PX10L
Q11	REAR COVER(PAINT)	MX-E5(VISION CARBON-GRAY COLOR)	Z07	ROUND HEX SOCKET SCREW	M8X1.25PX20L
Q12	PEDAL ARM END COVER	ABS BLACK	Z08	ROUND HEX SOCKET SCREW	M10X1.5PX40L
Q13	PEDAL SWIVEL AXLE COVER	ABS BLACK	Z09	SELF LOCKING NUT	M10X1.5P(BED) W/NYLON INSERT
Q14	CONSOLE MAST UPPER SLEEVE	PVC(BLACK)	Z10	MAST END BEARING CENTRAL AXLE	SS41(EP23-H04C)
Q15	E-PORT FIXING PLATE	ABS(EP23-Q15B-01)	Z11	OVAL-TAPPING PHILLIP SCREW	M4X15L
Q17	RIGHT STABILIZER TUBE SLEEVE(PAINT)	EP23B-1US(SILVER GRAY PU)	Z12	HYPOTENUSE INNER-HEX SOCKET SCREW	M8X1.25PX12L
Q18	LEFT STABILIZER TUBE SLEEVE(PAINT)	MX-E5XIEP23B-1US(SILVER GRAY PU)	Z13	ROUND HEX SOCKET SCREW	M6X1.0PX15L
Q19	ROUND DISK CAP	ABS(BLACK)EP23-Q19E	Z14	L WRENCH	M6
Q20	SIDE COVER CONNECTING PLATE	SPC(ZINC PLATING)	Z15	L-SHAPED HEX WRENCH	M6
Q21	FIXING BUCKLE PLUG	NYLON	Z16	L-SHAPED HEX WRENCH	M8
Q22	FIXING BUCKLE BASE	PVC	Z17	SLEEVE WRENCH PLIP SCREW	#17
Q23	SNAKE BELLY	PVC BLACK	Z18	PHILLIP WRENCH	4.5*50
Q24	MAIN BASE FRAME TUBE BOOT(PAINT)	MX-E5XIEP23B-1US(SILVER GRAY PU)	Z21	FLAT WASHER	6.4X11X1.6T
Q25	ROUND DISK(PAINT)	MX-E5(SILVER GRAY PU)	Z22	ROUND HEX SOCKET SCREW	M8X1.25PX15L
				HAND PULSE CABLE	700 (H6657R1-2+110XF)

