

Signal Tower Light Installation Guide

Important!

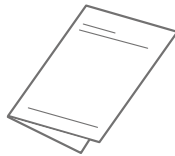
This task (installation to the printer) must be performed by trained service personnel only.

- Unauthorized copying or duplication of the whole or part of the contents of this document is prohibited.
- Every care has been taken in writing the contents of this document, but please contact MUTOH or the dealer you purchased the product from if you find any unclear, erroneous or otherwise unsatisfactory content in the document.
- Please be aware that MUTOH will not be liable in any way for failures or accidents that result from handling or operating the printer according to any procedures other than those set forth in this document.
- Company names and product names that appear in this document are registered trademarks of the respective companies.

Unpacking and installing the signal tower light

Unpacking

Unpack the package and check that the following parts are included.



Signal tower light : 1 Installation Guide (this document) : 1

Installing the signal tower light

You will need the following tools for installation.

- Phillips-head screw driver (No.2)
- Spanner (wrench size: 7 mm)

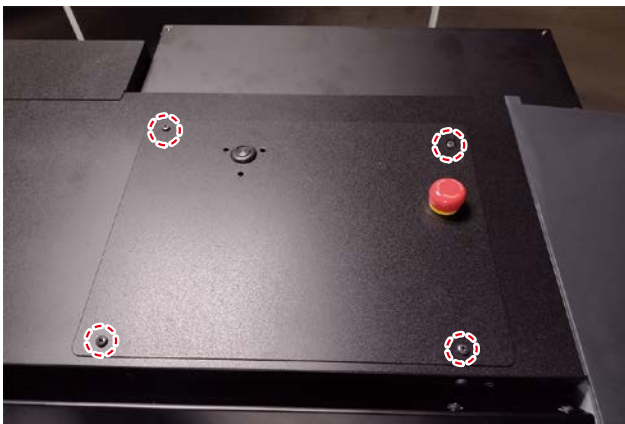


Caution

- Before installation, check that the printer's power cord is disconnected.
- At least two people are required for this task.

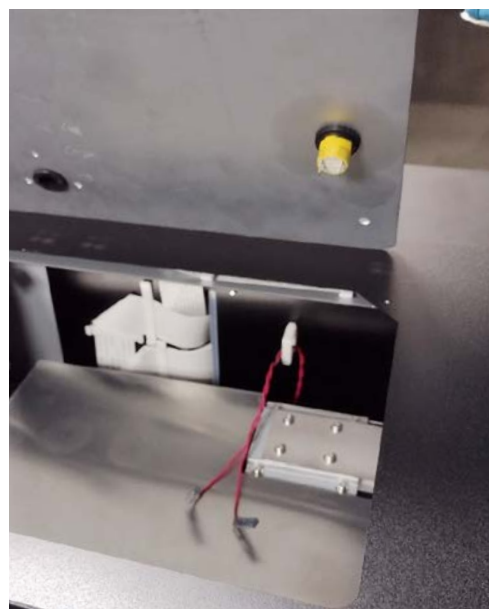
1

Remove the screws (x4) to remove the black plate lid from the top of the printer.



2

Remove the cable from the terminal of the emergency stop button.

**Important !**

- Hold the connector sleeve (①) to remove the cable.
- The terminal of the emergency stop button attached to the lid requires careful handling as it is easily bent.

3

Remove the grommet (②) from the lid.

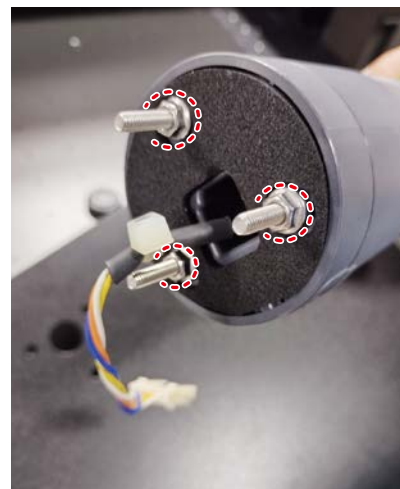
Important !

Keep the grommet in somewhere (e.g. in the box of signal tower light) for next use.



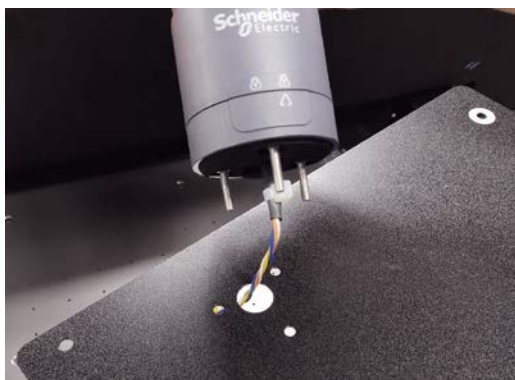
4

Remove the nuts (x3) from the screws of the signal tower light.



5

Insert the cable of signal tower light through the grommet hole.
Then insert the screws (x3) of the signal tower light into the screw holes.



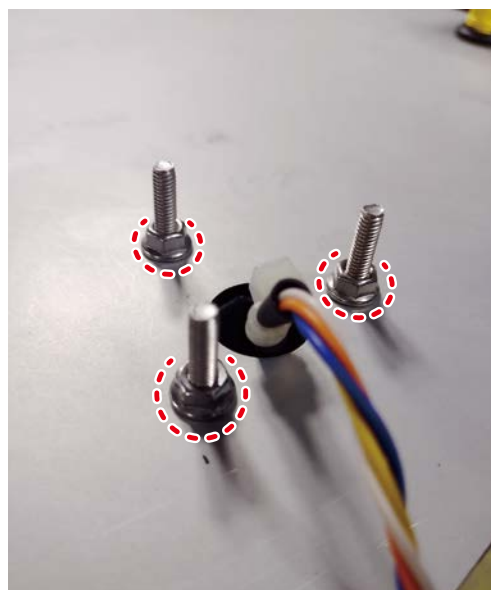
Important !

Install it with Schneider logo facing front of the printer.

6

Flip the black plate lid. Attach the nuts to the screws (x3) and then tighten the nuts.

- Use the spanner to tighten the nuts firmly.



7

Connect the cable of the signal tower light to the cable on the printer.

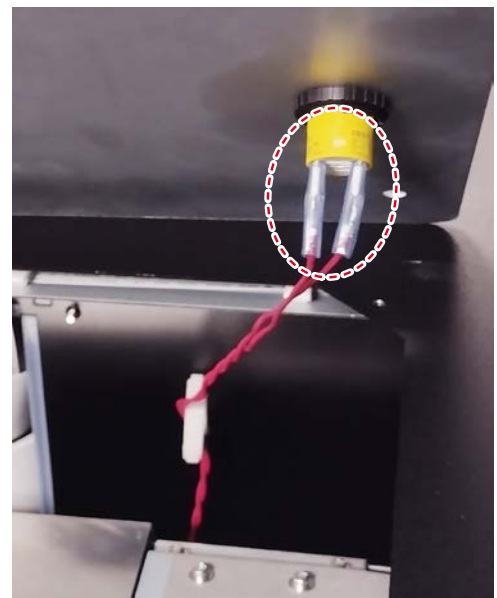
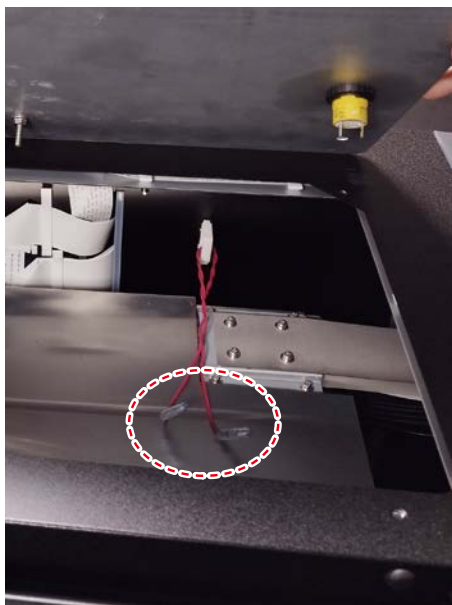


Important !

- The cable is wound on the clamp near the black plate lid of the top cover. Please not to unwind it from the clamp when connecting the cable.
- The cable is short. When connecting, make sure that one person holds the black plate lid that the signal tower light was installed.

8

Connect the cable removed in the step 2 to the terminal of the emergency stop button.

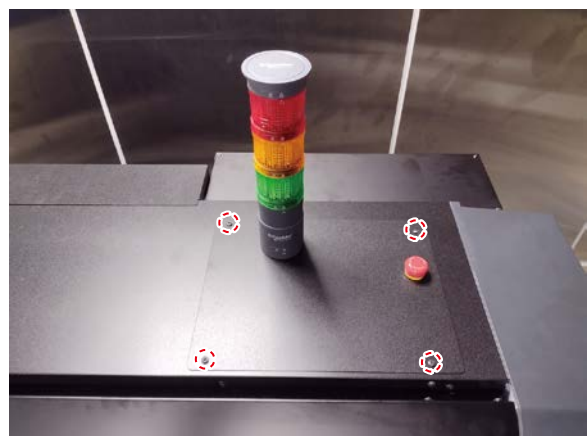


Important !

- When connecting, make sure to hold the connector sleeve and then connect to the terminal. The terminal is non-polar.
- The terminal of the emergency stop button attached to the lid requires careful handling as it is easily bent.
- The cable is short. When connecting, make sure that one person holds the black plate lid that the signal tower light was installed.

9

Use the screws (x4) removed in the step 1 and attach the black plate lid to the printer.



Important !

In case the error [E234] appears after the printer is powered on, there is a problem with the emergency stop button. Check that the emergency stop button is not pressed and the cable is connected firmly to the terminal.

