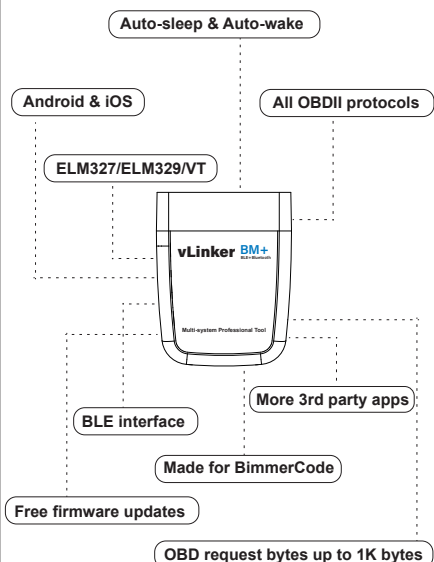


vLinker BM+ Start Guide



English

Characteristics:



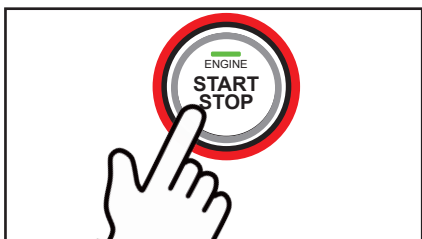
Steps:



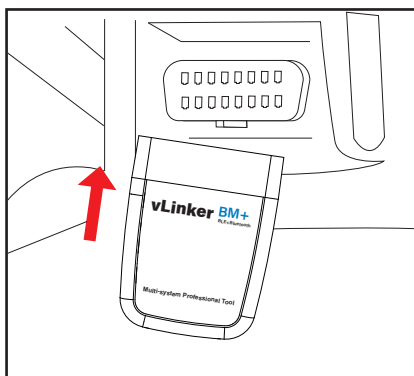
1. Download the app

Different apps have different connection procedures. Please scan the QR code in the app booklet to download the app and view the connection procedure.

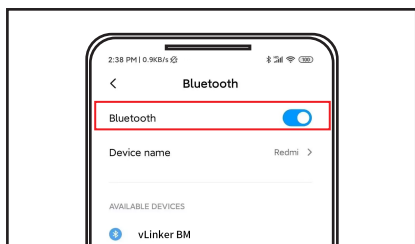
2. Start the engine



3. Plug the vLinker BM+ Bluetooth adapter into the OBD port



4. Find the Bluetooth name "vLinker BM-Android"



*(When connecting to an iOS device, you do not need to connect to Bluetooth in the settings. Open the app, set the BLE connection method in the app and find the vLinker BM-iOS connection)

5. Request pairing with the "vLinker BM-Android", pairing code "1234"

Please refer to the QR code for the connection steps included in the application manual.

Vgate