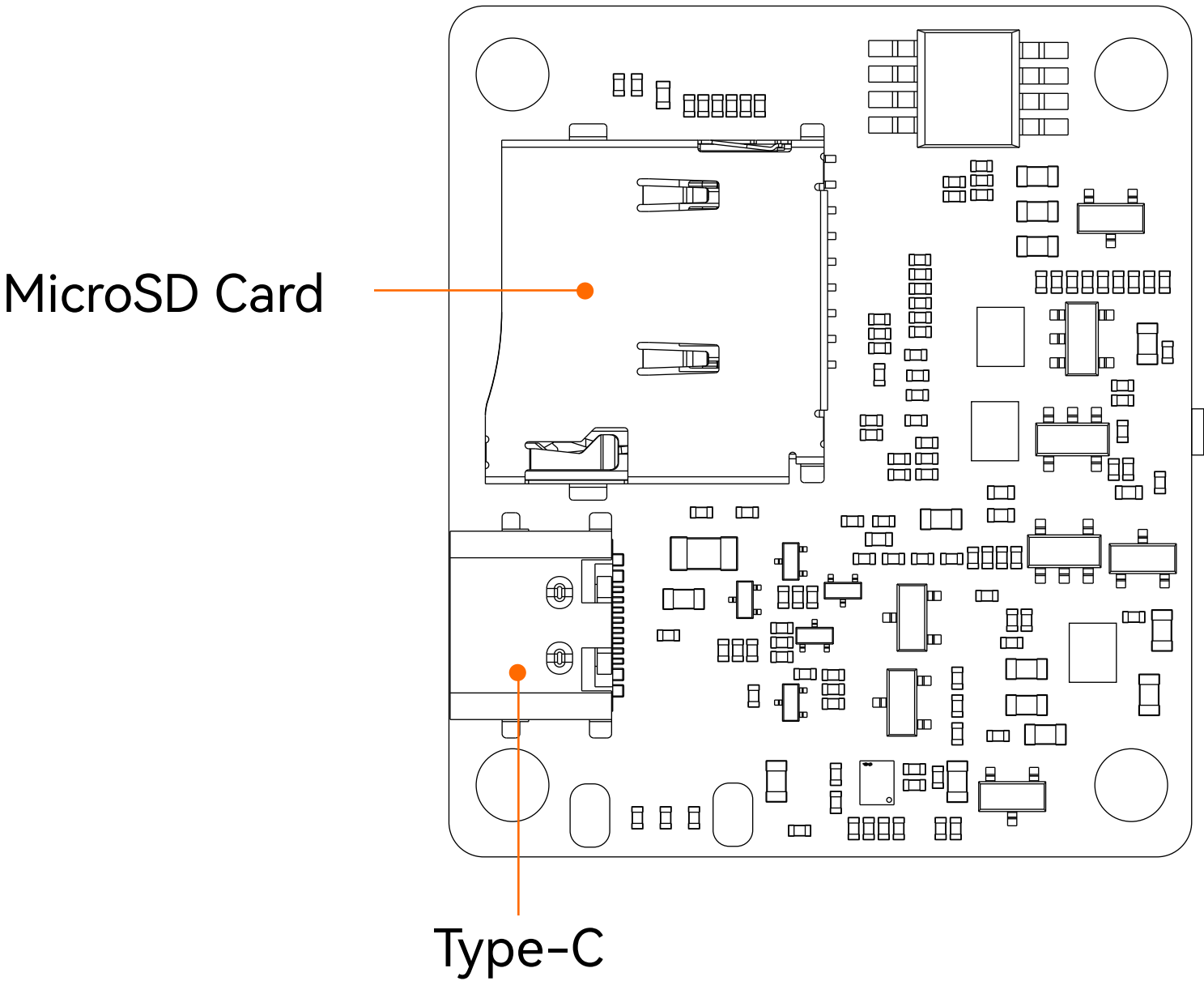
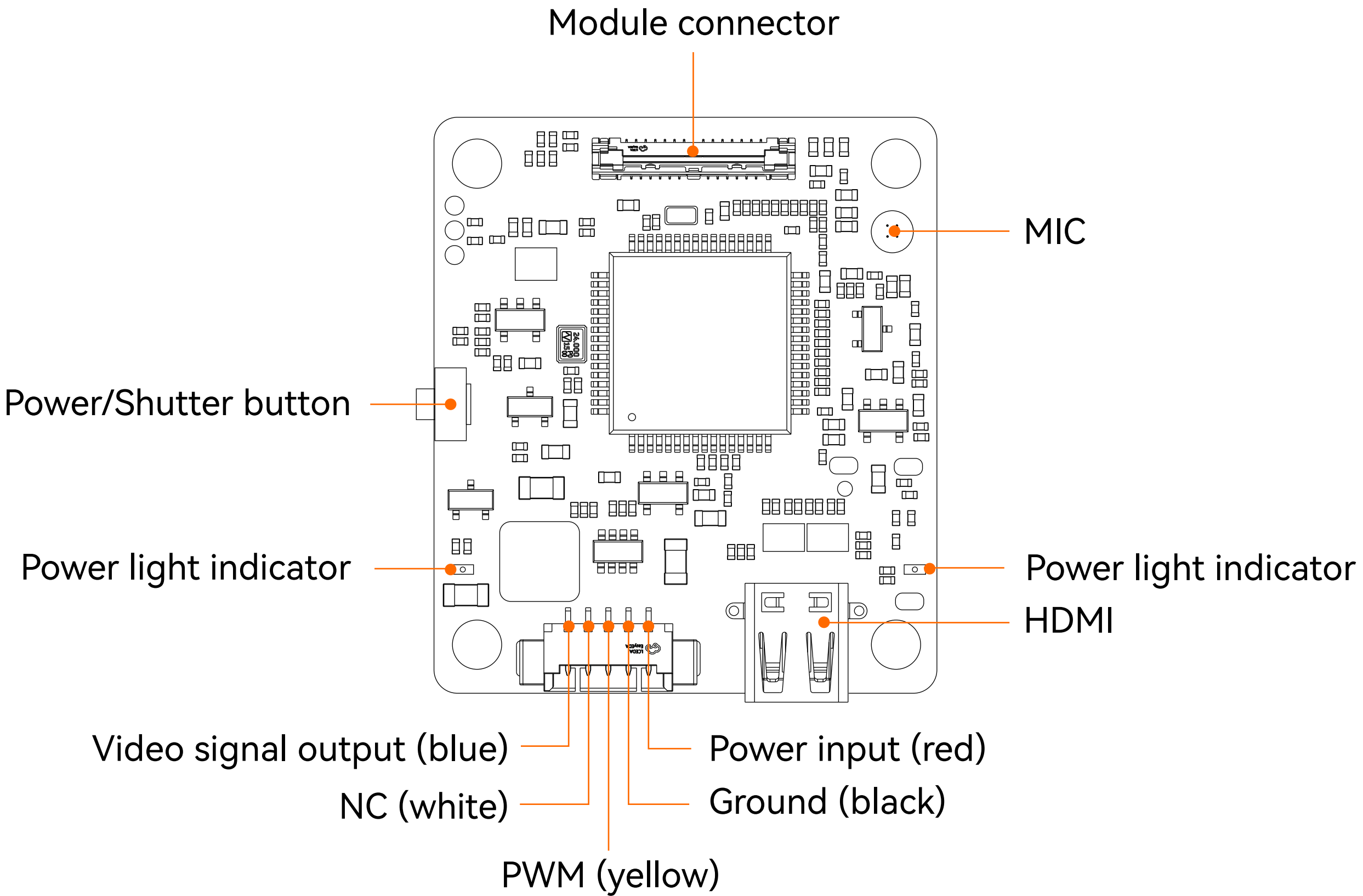


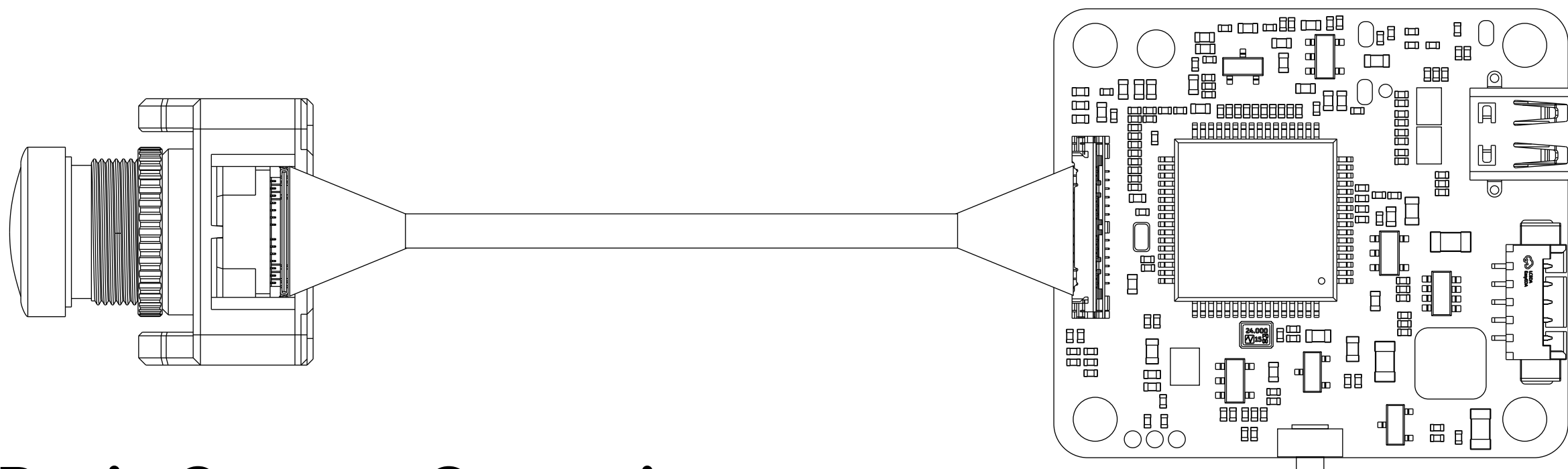
Runcam Split-H

User Manual

○ Diagram



○ Camera Module Connection

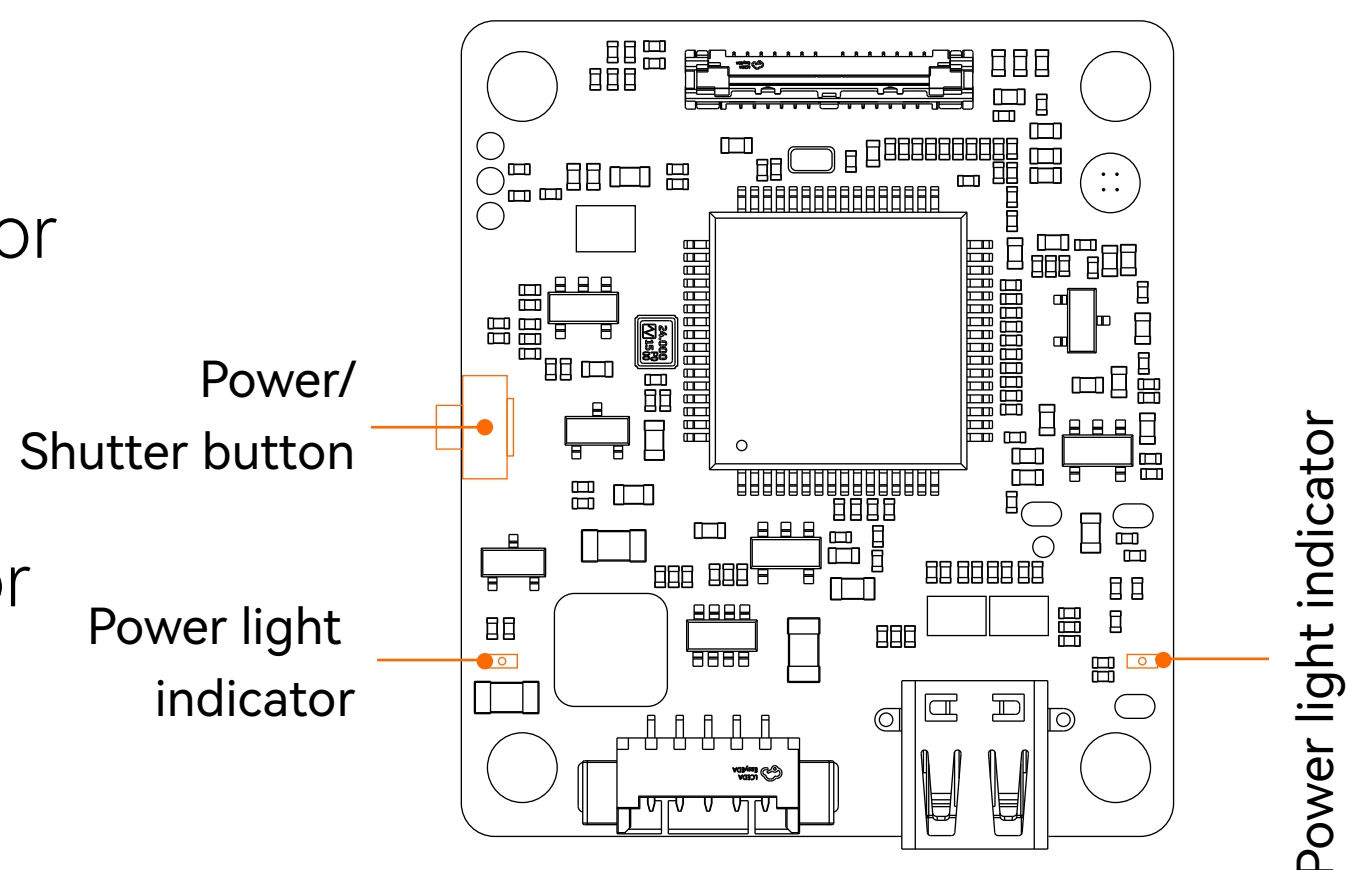


○ Basic Camera Operations

Power on/off

To power on, long press the Power/Shutter button, the power light indicator is on, camera gets turned on.

To power off, long press the Power/Shutter button, the power light indicator goes off, camera gets turned off.



Video mode

After turning on the camera, short press Power/Shutter button, the power indicator blinks slowly, camera starts to record.

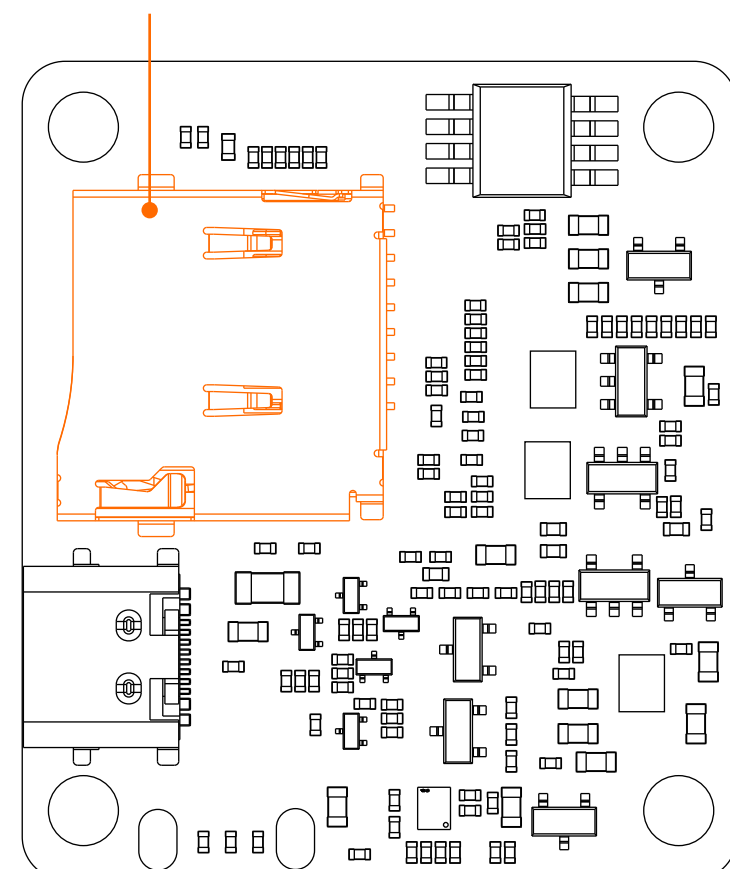
When the camera records, short press the Power/Shutter button, the power indicator stays solid, camera stops recording.

Abnormal Conditions

Card error (no card, card full or low-speed card etc.): light blinks red quickly

Abnormal booting: camera fails to detect the module, red light blinks slowly for 2 seconds, and camera shuts off after 5 seconds.

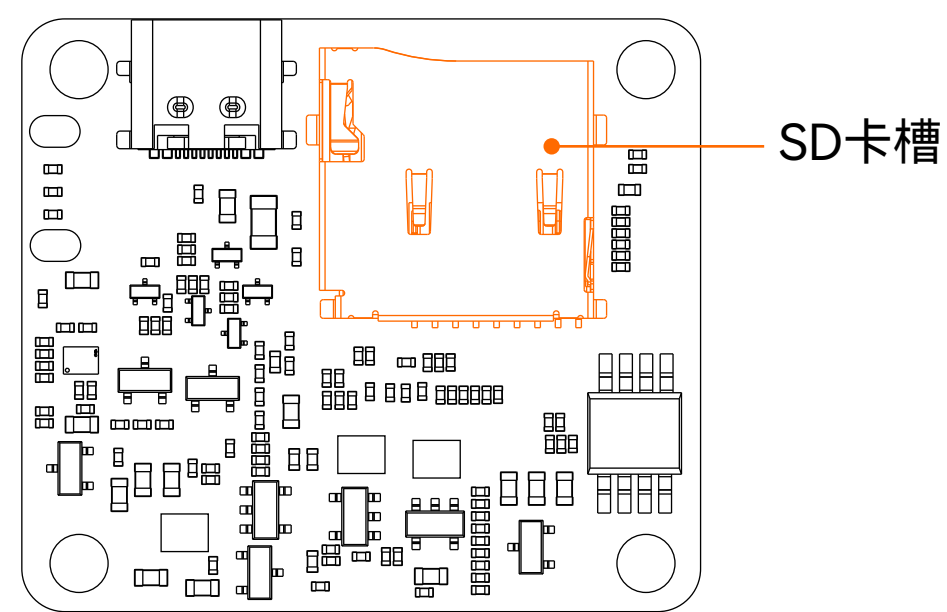
MicroSD Card



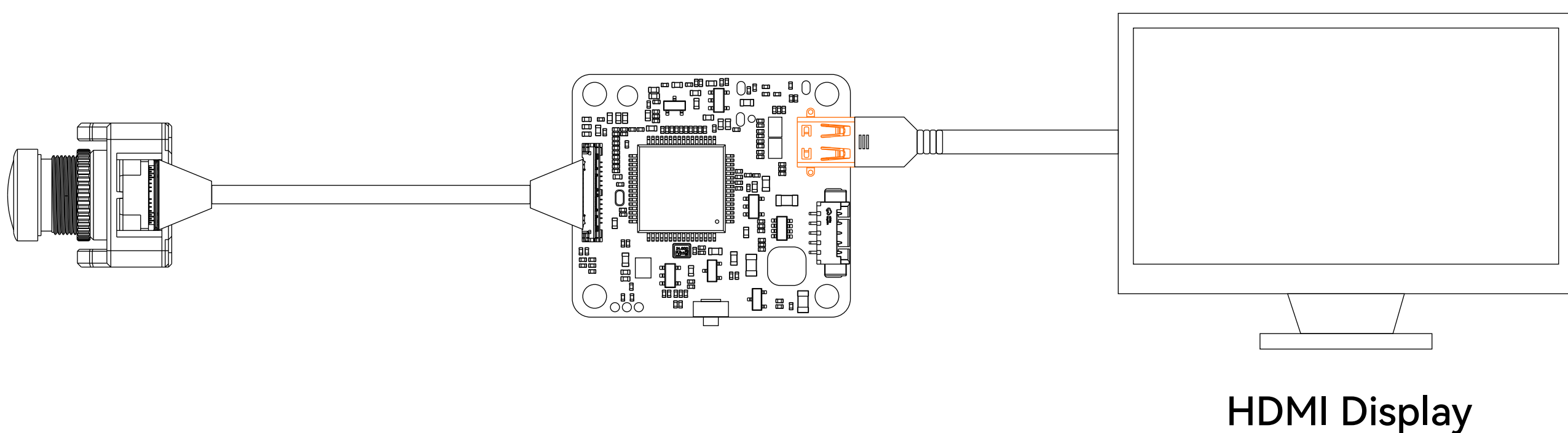
○ MicroSD Card

Use carefully when handling memory cards. Avoid liquids, dust, and debris. As a precaution, please power off the camera before inserting or removing the card. Check manufacturer guidelines regarding use in acceptable temperature ranges.

If camera cannot record, please format the used microSD card via computer.



○ HDMI Connection



○ Firmware Update

For camera's best performance, please use the latest firmware.

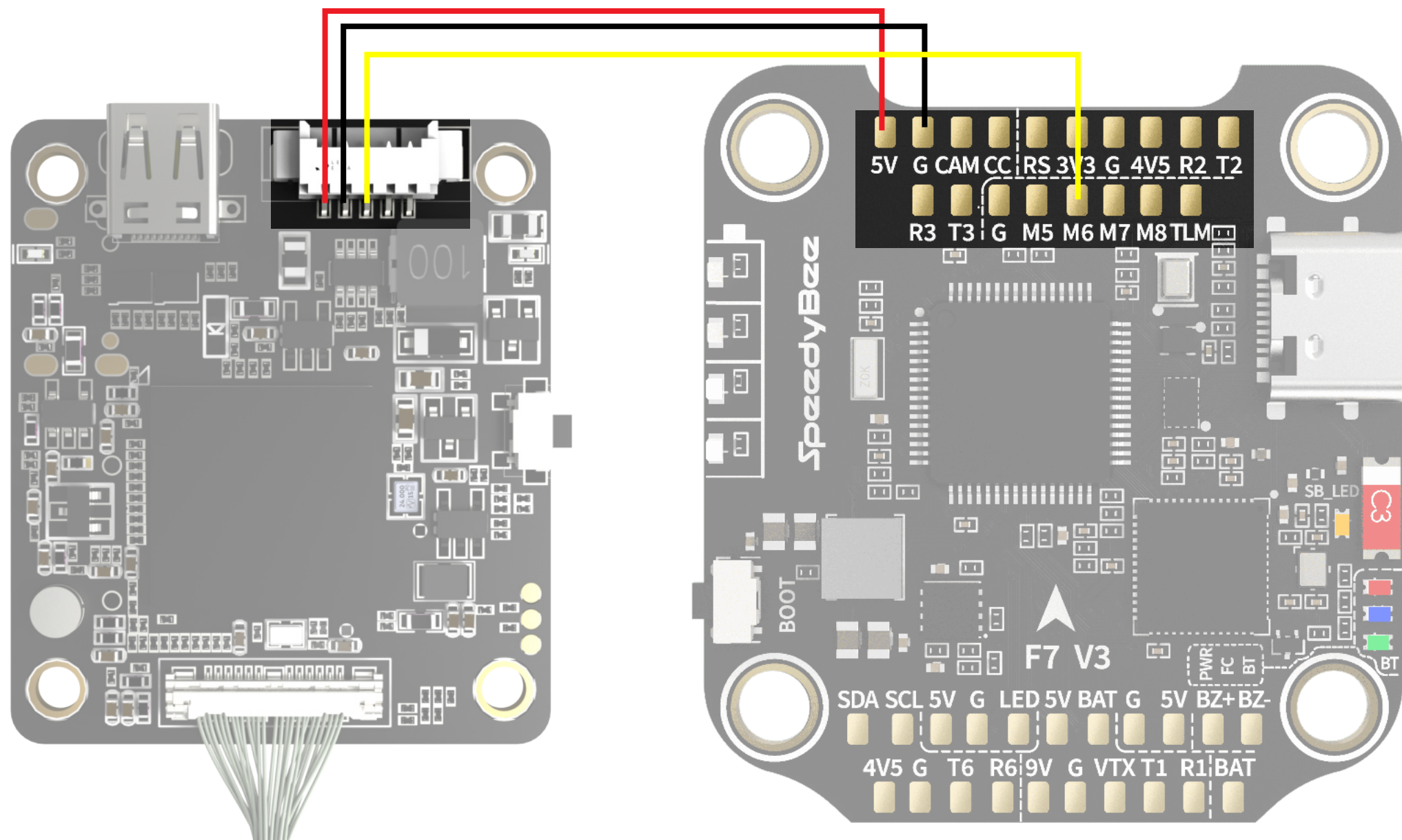
Camera firmware update status: red light blinks fast, and camera shuts off automatically when the update is finished.

Firmware file name: split-hc.bin

○ PWM Remote Control

Here we take Flight Controller Speedy Bee-F7 for an example.

Connect RunCam Split-H to SpeedyBee F7V3 via the cables, with Power wire (red) to 5V pad, GND wire (black) to GND pad, PWM wire (yellow) to M6 pad.



RunCam Split-H

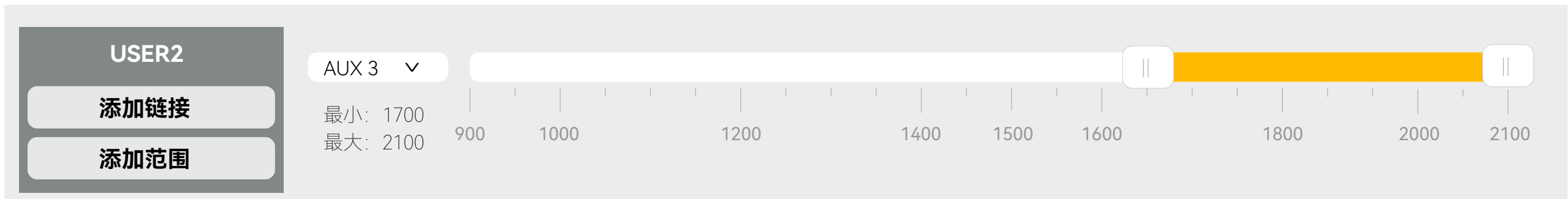
SpeedyBeeF7V3

○ Steps to configure

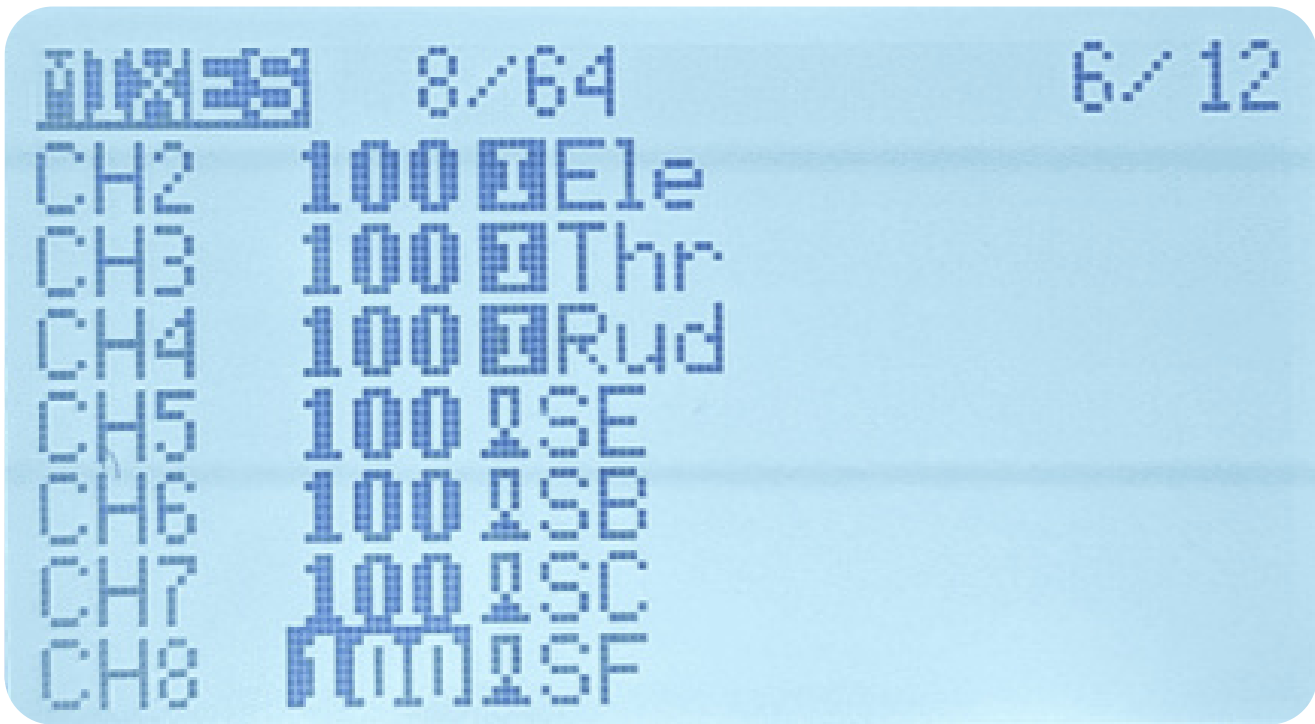
- Configure M6 at CLI mode
- Connect to BetaFlight, and enter the CLI interface
- Type in resource to proceed, and type the command as below

```
# resource motor 6 none
# resource pinio 2 B05
# set pinio_config = 129,129,1,1
# set pinio_box = 0,41 ,255,255
# save
```


- Navigate to the Modes tab at the BetaFlight, and find Mode USER2. Here takes AUX3 as an example to configure, and the range is 1900-2100.



- Please choose your Model on the controller, then access to the MIXER interface and assign the channel to a switch.
- Here we take Radiomaster TX12 as an example, assigning CH7 to SF position.



○ Specifications

Product	SPLIT-H
Sensor	SONY (5MP)
Field of view	FOV 94°
Resolution	1080P@60FPS
Video file format	MP4
HDMI output format	1080P60HZ
SD card max. capacity	128G(U3 recommended)
Power range	5-20V
Lens module size	19*19mm
Mounting hole spacing	26.5mm*30.5mm
PCB size	32mm*37mm
Working current	540mA@5V/365mA@7.4V/225mA@12V
Weight	22g