



Point of Use Countertop Water Dispenser

Setup Manual

Model No.: CLCTPOU620UVF2

Table of Contents

- Safety Information 3
- Intended Use 4
- Product Features 4
 - Product Dimensions 4
 - Indicator Panel Description 5
 - Operational Specifications 5
 - Technical Specifications 6
- Package Contents 6
- Installation 7
 - Materials Needed 7
 - Install the Dispenser 7
 - Connect to the Cold Water Supply 7
 - Flush the Filters 8
 - Install the Filters and Complete the Installation 9
- Operation 10
 - Turn the Dispenser On/Off 10
 - Dispense Cold Water 10
 - Disable Child Safety Lock and Dispense Hot Water 10
- Troubleshooting 11
- Cleaning and Maintenance 11
 - Filter Replacement Schedule 12
 - Replace the Filters 12
 - Filter Specifications 12
 - Care and Maintenance 12
- Warranty 13

Safety Information

WARNING: To reduce risk of injury and property damage, you must read this entire guide before assembling, installing and operating the dispenser.

WARNING: This product dispenses water at very high temperatures. Failure to use properly can cause personal injury. When operating this dispenser, always exercise basic safety precautions, including the following:

- Prior to use, this dispenser must be properly assembled and installed in accordance with this manual.
- For indoor use only. Keep the water dispenser in a dry place away from direct sunlight. Do NOT use outdoors.
- Install and use only on a hard, flat and level surface.
- Do NOT place the water dispenser in an enclosed space or cabinet.
- Do NOT operate the dispenser in the presence of explosive fumes.
- Use only properly grounded outlets.
- Do not use an extension cord.
- Always grasp the plug and pull straight out from the outlet. Never unplug by pulling on the power cord.
- Do NOT use the dispenser if the cord becomes frayed or otherwise damaged. If the supply cord is damaged, it must be replaced by the manufacturer, its service agent or similarly qualified persons in order to avoid a hazard.
- To protect against electric shock, do NOT immerse cord, plug, or any other part of the dispenser in water or other liquids.
- Ensure the water dispenser is unplugged prior to cleaning.
- Never allow children to dispense hot water without proper and direct supervision. Unplug the unit to prevent unsupervised use by children.
- Service should be performed only by a certified technician.
- The appliance must not be cleaned by a water jet and is not suitable for installation in an area where a water jet could be used.

WARNING: Keep ventilation openings, in the appliance enclosure or in the built-in structure, clear of obstruction.

WARNING: Do not use mechanical devices or other means to accelerate the defrosting process, other than those recommended by the manufacturer.

- This appliance should work under environment of temperatures from 4°C~40°C (39°F~104°F) and humidity ≤90%.
- Never turn the machine upside down or lean it more than 45°.
- After turning the dispenser off, allow the dispenser to sit idle for 3 minutes before turning on again.

WARNING: UV light source. Disconnect the electrical supply to the UV radiation BEFORE opening cover.

- UV-LED lamp must be repaired by manufacturer only.
- UV-LED lamp model no. YB09-950-022, rated DC 24V, 0.17W±20%.
- Disposal of the UV-LED lamp must be done in accordance with local laws and regulations.

WARNING: Designed for use with 120V AC power only. DO NOT use the 220V outlet.

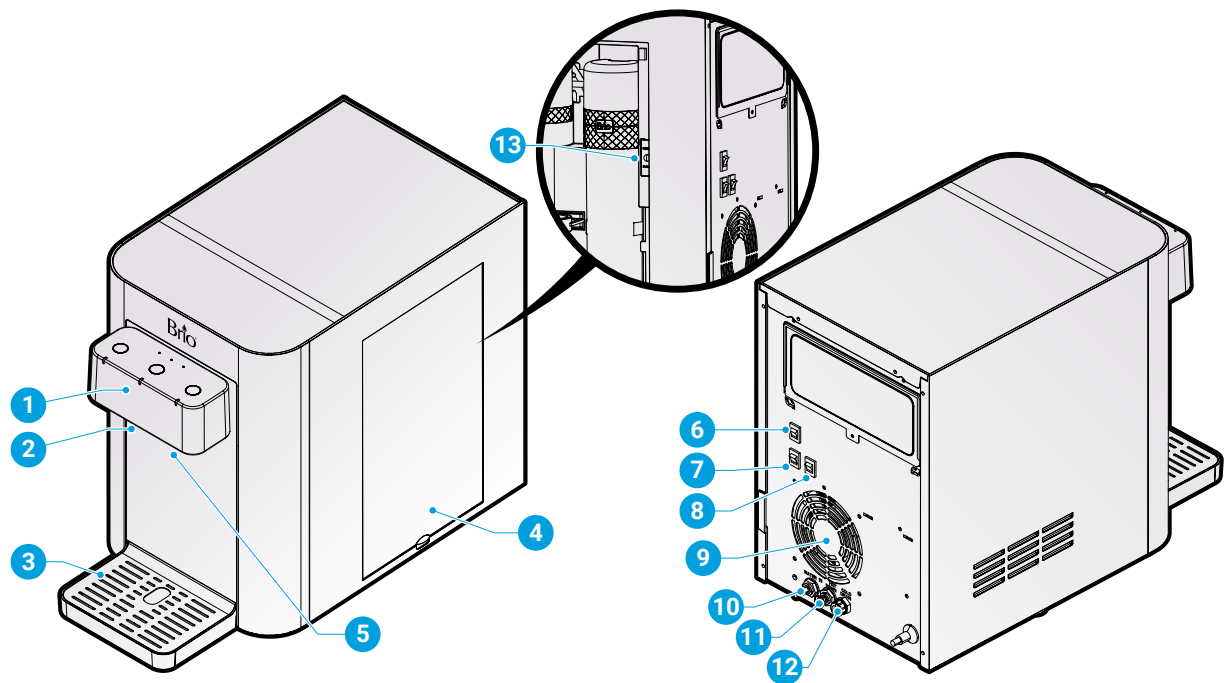
Intended Use

This appliance is intended to be used in household and similar applications such as:

- Staff kitchen areas in shops, offices and other working environments
- Farm houses
- Hotels, motels and other residential-type environments
- Bed-and-breakfast environments
- Catering and similar non-retail applications

This appliance is not intended for use by persons (including children) with reduced physical, sensory or mental capabilities, or lack of experience and knowledge, unless they have been given supervision or instruction concerning use of the appliance by a person responsible for their safety.

Product Features

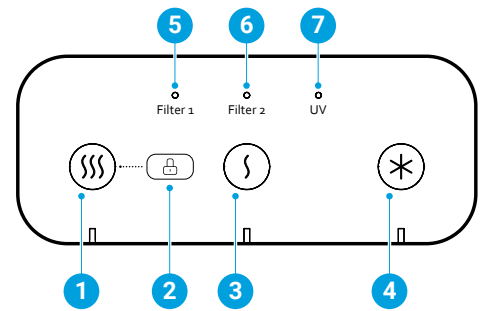


Part	Description
1	Control panel
2	Water outlet
3	Drip tray
4	Filter cover
5	Night light
6	Night light switch
7	Cooling switch

Part	Description
8	Heating switch
9	Fan
10	Water inlet
11	Hot water drain
12	Cold water drain
13	Filter reset button

Indicator Panel Description

1. Hot Water Button – Press to activate the hot water feature. The Hot icon illuminates to indicate hot water feature is selected and working.
2. Child Lock Button – Press to unlock hot water button.
3. Ambient Water Button – Press to activate the ambient water feature. The Ambient icon illuminates to indicate that ambient water is selected.
4. Cold Water Button – Press to activate the cold water feature. The Cold icon illuminates to indicate that the cold water feature is selected and working.
5. Filter 1 (Sediment) Indicator Light – This light flashes when the Sediment filter has expired and needs to be replaced.
6. Filter 2 (Carbon) Indicator Light – This light flashes when the Carbon filter has expired and needs to be replaced.
7. UV – The UV indicator light illuminates when self-cleaning UV is working.



Operational Specifications

You must use the dispenser within the following operational parameters to ensure safe, optimal performance.

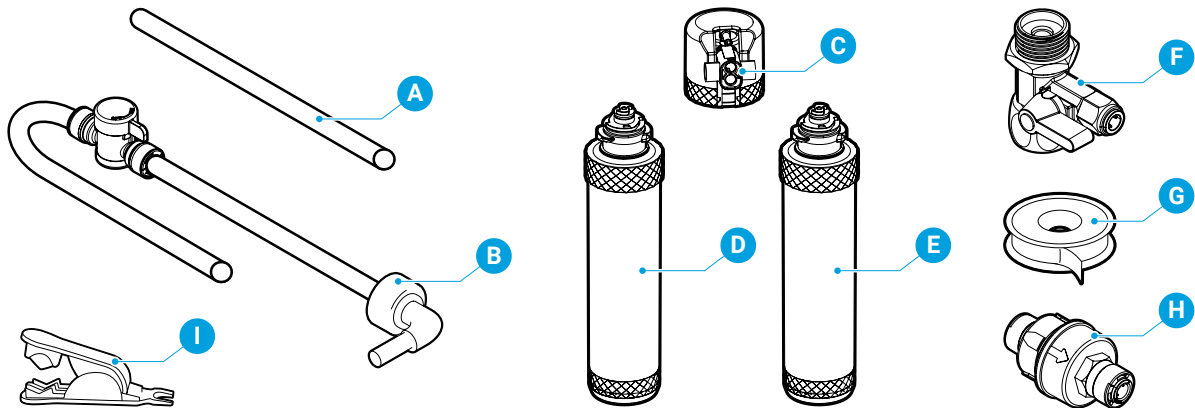
Model No.	CLCTPOU620UVF2
Rated Voltage / Frequency	115 V / 60 Hz
Heating Power	420 W
Cooling Power	100 W
Operating Ambient Temperature	39–104 °F (4–40 °C)
Operating Humidity	≤90%
Operating Source Water	Municipal water with TDS ≤250 ppm
Operating Source Water Temperature	39–100 °F (4–38 °C)
Operating Water Pressure	14.5–58 psi (0.1– 0.4 MPa)

Technical Specifications

CAUTION: This unit dispenses water at temperatures that can cause severe burns. Avoid direct contact with hot water. Keep children and pets away from unit while dispensing. Never allow children to dispense hot water without proper supervision. Unplug unit to prevent unsupervised use by children.

Model No.	CLCTPOU620UVF2
Hot Water Tank Volume	1 L
Cold Water Tank Volume	1.5 L
Hot Water Capacity (Measured at Ambient Temperature of 77 °F / 25 °C)	4 L/h (≥185 °F / 85 °C)
Cold Water Capacity (Measured at Ambient Temperature of 77 °F / 25 °C)	1.5 L/h (≤50 °F / 10 °C)
Hot Water Flow Rate	≥1.2 L/min
Cold Water Flow Rate	≥1.2 L/min
Net Weight	37.9 lb. (17.2 kg)
Product Dimensions (WxHxD)	11 x 16.14 x 19.29 in. (27.9 x 41 x 49 cm)
Dispense Point to Drip Tray (H)	9.84 in. (25 cm)
Drip Tray Area (WxD)	6.7 x 4.7 in. (17 x 12 cm)
UV Lamp Service Life	3 years or 10,000 hours
Noise (dBA)	≤49 dB

Package Contents



Part	Description	Quantity
A	Filter flushing tube	1
B	Shut-off valve tube (7 ft.)	1
C	Filter housing (for filter flushing)	1
D	Sediment filter	1
E	Carbon block filter	1

Part	Description	Quantity
F	Feedwater adapter (with extra nut)	1
G	Plumber's tape	1
H	Pressure-reducing valve	1
I	Tube cutter	1

Installation

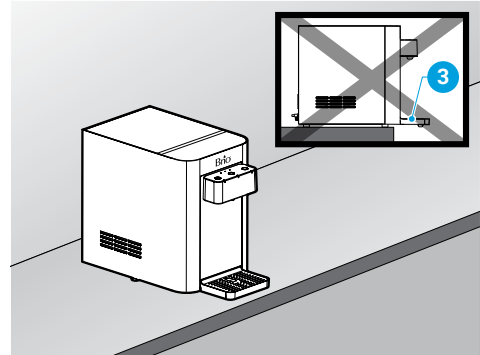
Materials Needed

- Wrench

1. Install the Dispenser

- Locate the dispenser upright on a hard, level surface that is out of direct sunlight and near a grounded outlet.
- Position the back of the dispenser no closer than 3 in. (7.62 cm) from wall to permit free airflow between the wall and water dispenser.
- Ensure the drip tray sits fully and securely on the counter and does not extend over it.

IMPORTANT: Ensure dispenser stands upright for 24 hours BEFORE plugging in to allow oil to settle back into compressor. Failure to do so may damage the compressor and void warranty.



2. Connect to the Cold Water Supply

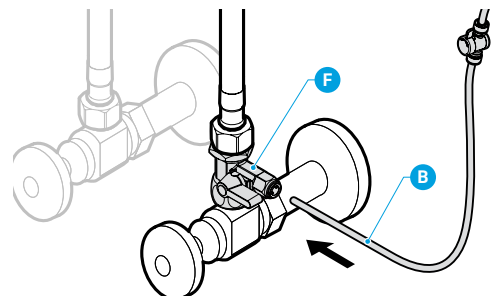
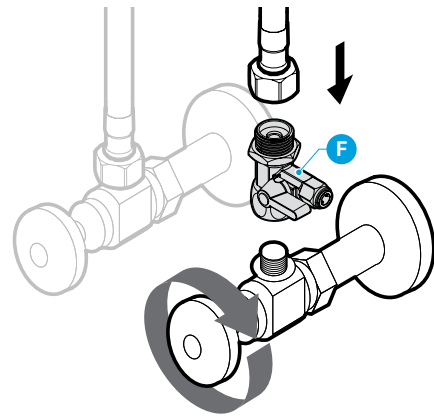
CAUTION: DO NOT CONNECT THIS WATER LINE TO A HOT WATER SUPPLY LINE. The water supply to the unit MUST be from the COLD WATER LINE. Using HOT WATER will severely damage your filters.

NOTE: Plumber's tape has been included to facilitate installation. Use it on threaded plumbing connections to ensure a secure seal. If your water pressure is high, a pressure-reducing valve has been included. Install it on the 1/4" shut-off valve tube (B) after the feedwater adapter (F), but before the shut-off valve on the tube. Use tube cutter to cleanly cut tubing.

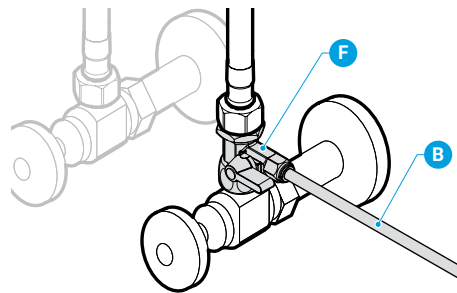
- Turn off the cold water supply, then disconnect the cold water pipe from the cold water supply line.
- Connect the feedwater adapter (F) to the cold water supply line.
- Connect the cold water pipe to the top of the feedwater adapter (F).

NOTE: An extra adapter nut is included on top of the feedwater adapter (F) to attach to a 3/8 in. or 1/2 in. feed plumbing line.

- Insert the shut-off valve with tube (B) straight into the quick connector piece of the feedwater adapter (F).



- E. Gently tug on the tube (B) to ensure a secure connection with the feedwater adapter (F).

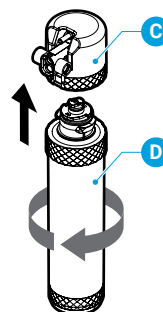


3. Flush the Filters

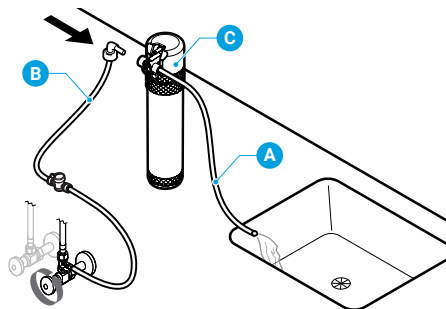
Follow this procedure every time you replace your filters.

IMPORTANT: Ensure the water supply is off before you begin.

- A. Connect a filter (D) to the filter housing (C) by twisting the filter (D) clockwise.

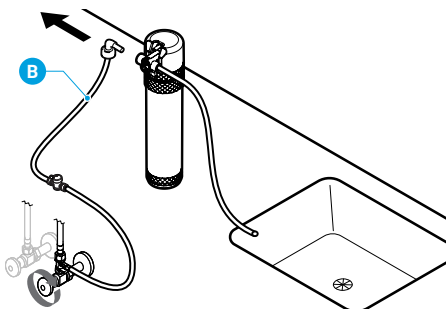


- B. Connect the tip of the shut-off valve tube (B) to the left side of the filter housing (C).
- C. Connect the filter flushing tube (A) to the right side of the filter housing (C) and lay the open end of the filter flushing tube (A) over a sink or receptacle to collect water.



- D. Turn on water supply and follow instructions in table below to flush filters.

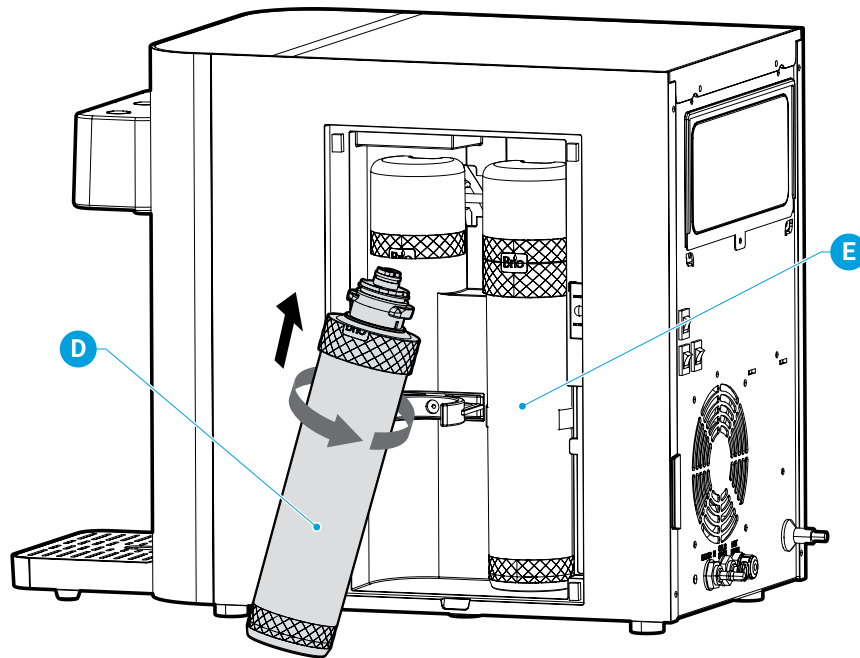
IMPORTANT: After each filter is flushed, be sure to shut off water supply before disconnecting tubes to flush the next filter.



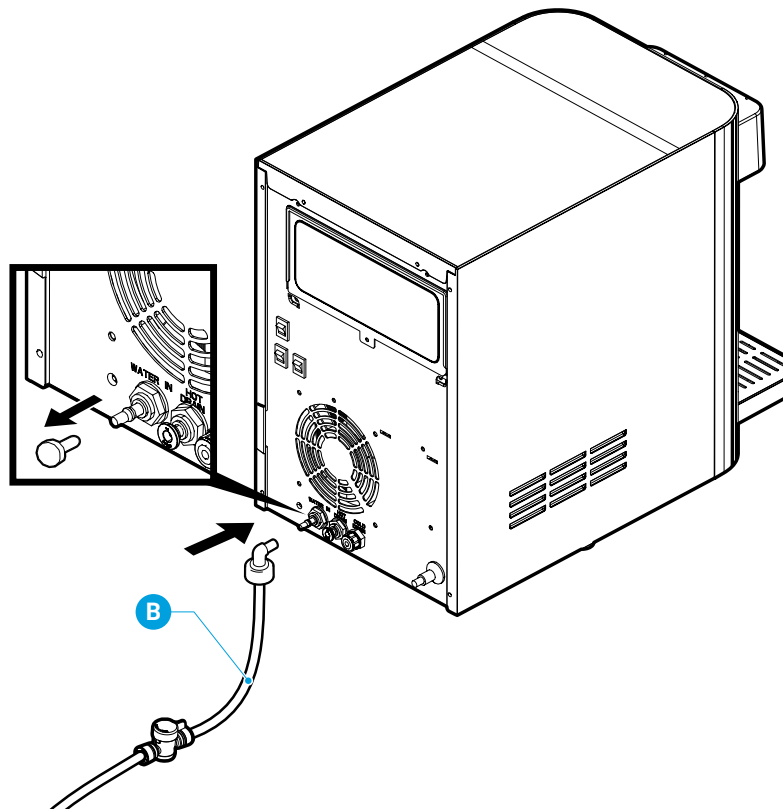
Stage 1: Sediment Filter	Stage 2: Carbon Block Filter
At first, water may appear cloudy.	At first, water may contain black debris.
Flush filter for an additional 4 minutes <u>after</u> water runs clear.	Flush filter for up to 4 minutes or until water runs clear.

4. Install the Filters and Complete the Installation

- A. After flushing, twist each filter (D and E) clockwise into the filter housings located inside the dispenser cabinet. The sediment filter (D) goes on the left, the carbon block filter (E) on the right.



- B. Remove the safety plug from the water inlet hole on the back of the dispenser by pushing in the inlet hole collar and then gently pulling out the plug.
- C. Connect the tip of the shut-off valve tube (B) into the water inlet hole on the back of the dispenser. Then turn on the main water supply and ensure the valve in the tube (B) is on.



Operation

IMPORTANT: This unit has been tested and sanitized prior to packing and shipping. During transit, dust and odors can accumulate in the tank and lines. Dispense and dispose at least one quart of water prior to drinking any water.

Turn the Dispenser On/Off

IMPORTANT: Before you activate the heating and cooling switches, ensure water has filled the tanks inside the dispenser in order to prevent dry heating.

1. Plug in the dispenser.
2. Run water through the cold and hot water taps until water begins to dispense.
3. To power on the cooling system, flip the cooling switch to the On position.
4. To power on the heating system, flip the heating switch to the On position.

Dispense Cold Water

NOTE: Water will take approximately 1 hour after plugging in and turning on to become completely chilled. The cooling light will turn off once the water has been fully chilled.

1. Place a drinking glass or container under the tap and press the cold water button to dispense cold water or the ambient water button to dispense room temperature water.
2. Release button when your container is full.

Disable Child Safety Lock and Dispense Hot Water

CAUTION: This unit dispenses water at temperatures that can cause severe burns. Avoid direct contact with hot water. Keep children and pets away from the unit while dispensing. Never allow children to dispense hot water without proper and direct supervision. Disable the heating feature by switching the heating switch to the Off position.

NOTE: Water will take approximately 15-20 minutes after plugging in and turning on to reach its hottest temperature. The heating light will turn off once the water has been fully heated.

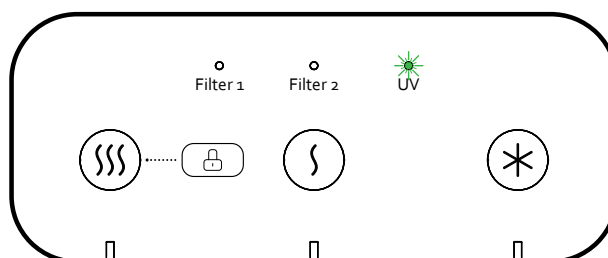
1. This water dispenser is equipped with a child safety feature in order to prevent inadvertent dispensing. To disable the child safety lock feature, press the lock button.
2. To dispense hot water, place a cup or container under the tap and press the hot water button.
3. Release when your container is full. Hot water button automatically relocks.

Troubleshooting

Problem	Solution
The cold water is not cold.	<ul style="list-style-type: none"> It takes up to one hour after setup to dispense cold water. Make sure the power cord is properly connected to a working outlet. Make sure the back of the dispenser is at least 3 in. (7.62 cm) from a wall and there is free airflow on all 3 in. (7.62 cm) sides of the dispenser. Make sure green power switch on back of dispenser is On.
The hot water is not hot.	<ul style="list-style-type: none"> It takes 15-20 minutes after setup to dispense hot water. Make sure the power cord is properly connected to a working outlet. Make sure red power switch on back of dispenser is On.
The night light is not working.	<ul style="list-style-type: none"> Make sure the power cord is properly connected to a working outlet Make sure the night light power switch on back of dispenser is On.
The dispenser is noisy.	<ul style="list-style-type: none"> Ensure the dispenser is located on a level surface. The heating tube may be generating a slight noise. This is normal.
The machine is not dispensing water.	<ul style="list-style-type: none"> The dispenser has become too cold and the lines are blocked by ice. Turn the cooling switch off for at least 4 hours to allow the water in the lines to thaw.
Hot water light is flashing.	<ul style="list-style-type: none"> There is a short circuit or open circuit in the hot water NTC. Power off dispenser. Replace hot water NTC.
Cold water light is flashing.	<ul style="list-style-type: none"> There is a short circuit or open circuit in the cold water NTC. Power off dispenser. Replace cold water NTC.
Ambient water light is flashing.	<ul style="list-style-type: none"> There is a communication failure. Power off dispenser. Check to see there is a loose internal wire or open circuit. If so, repair or replace. If it's not a loose wire or open circuit, replace display board. If the problem is still not resolved, replace power board.
UV indicator light is flashing.	<ul style="list-style-type: none"> The water inlet tube may be blocked. Power off dispenser and turn off water. Check tubing and unblock if necessary. A filter may be blocked. Power off dispenser and turn off water. Check filters to see if either is blocked. If one or both are, replace.
All lights are flashing.	<ul style="list-style-type: none"> There is a leak. Turn off water to dispenser and power off. Contact a certified repair professional for assistance.

Cleaning and Maintenance

This water dispenser is equipped with UVC LED “UV-Care” Technology. It’s important to note that the UV-Care feature in this water cooler is specifically designed for sanitizing the cold tank, not for purifying the water. This system features a UV LED light above the cold tank, which activates for 120 minutes and then turns off for 140 minutes, which keeps the tank clean and sanitized. An indicator light on the cooler illuminates when the UV light is active, allowing you to easily see when it’s on or off. The LED technology requires minimal maintenance and is built to last, with a lifespan of about 3 years due to its intermittent operation. This automatic on/off cycle prevents constant use and significantly extends the LED light’s life.



Filter Replacement Schedule

Filter Type	Model No.	Replacement Schedule	Function
Sediment	NFMPP5M	6-12 months or 950 gallons	Performs coarse filtration of inlet water, removing sand, rust, dirt, and other suspended solids.
Carbon Block	NFMCTO5MS2	6-12 months or 950 gallons	Removes chlorine, and other unpleasant tastes and odors.

Replace the Filters

IMPORTANT: Only replace the filters with new filters designed for this dispenser. Any other type of filter will damage the machine and void any warranty.

When filters are approaching end of life, the indicator lights start to blink. To change filters:

1. Shut off the water supply.
2. Remove expired filters.
3. Flush the new filters according to instructions under “Flush the Filters.” Install new, flushed filters. Ensure sediment filter is on the left and carbon block is on the right.
4. Press the filter reset button (13) until the red indicator light turns off.

Filter Specifications

Sediment Filter

(Sediment, Dirt, and Rust Removal)

Filter Capacity	950 Gallons
Flow Rate	0.8 GPM
Suggested PSI	14.5 - 58 psi
Temperature	33 - 100 °F

Carbon Block Filter

(Chlorine, Taste, and Odor Reduction)

Filter Capacity	950 Gallons
Flow Rate	0.8 GPM
Suggested PSI	14.5 - 58 psi
Temperature	33 - 100 °F

Care and Maintenance

- Keep this dispenser in a dry and cool place and avoid direct sunshine.
- Ensure the back of the dispenser is at least 3 in. (7.62 cm) away from the wall.
- Never put the dispenser on paper or foam, which may store water and then cause creepage. Never put anything flammable beside this machine.
- Do not use the dispenser outdoors or in a place that can be splashed by water.
- If the dispenser is not in use for longer than a 24-hour period, turn off the heating and cooling switches to save power, and drain any remaining water.
- If the water supply is cut off, shut off the water supply and turn the dispenser off. When the water supply is back on, re-open the water supply to the dispenser, turn the dispenser on, and allow the dispenser to run in order to discharge sediment.

Warranty

Brio ("Vendor") warrants to the original purchaser of the Brio Water Coolers (the "Product"), and to no other person, that if the Product is assembled and operated in accordance with the printed instructions accompanying it, then for a period of one (1) year from the date of purchase, all parts in the Product shall be free from defects in material and workmanship. This Limited Warranty shall be limited to repair or replacement of parts, which prove defective under normal use and service and which Vendor shall determine in its reasonable discretion upon examination to be defective. To take advantage of this Limited Warranty, please follow these steps:

1. Please retain your sales slip or invoice, as Vendor may require reasonable proof of your date of purchase.
2. Contact Vendor's Customer Service Department using the contact information listed below.
3. Return parts to Vendor, per Vendor's instructions, at your cost and expense.
4. Upon receipt by Vendor, Vendor shall advise you in writing whether a defect covered by this Limited Warranty exists in any returned part and whether your claim has been approved or denied.
5. Upon Vendor's approval of your claim, Vendor will replace such defective part without charge to you.

WHAT THIS LIMITED WARRANTY DOES NOT COVER: This Limited Warranty does not cover any failures or operating difficulties of the Product due to accident, abuse, misuse, alteration, misapplication, improper installation or improper maintenance or service by you or any third party, or failure to perform normal and routine maintenance on the Product, as set out in the User's Manual. In addition, this Limited Warranty does not cover damages to the finish, such as scratches, dents, discoloration or rust after purchase.

This Limited Warranty is the only express warranty given on the Product and is in lieu of all other express warranties. Vendor disclaims all warranties for products that are purchased from seller other than authorized retailers or distributors. THIS LIMITED WARRANTY RESTRICTS THE DURATION OF ANY AND ALL IMPLIED WARRANTIES, INCLUDING WITHOUT LIMITATION, THE IMPLIED WARRANTY OF MERCHANTABILITY AND FITNESS FOR A PARTICULAR PURPOSE TO THE ONE (1) YEAR TERM OF THIS LIMITED WARRANTY. UPON THE EXPIRATION OF THE ONE (1) YEAR TERM OF THIS LIMITED WARRANTY, VENDOR DISCLAIMS ANY AND ALL IMPLIED WARRANTIES, INCLUDING WITHOUT LIMITATION THE IMPLIED WARRANTIES OF MERCHANTABILITY AND FITNESS FOR A PARTICULAR PURPOSE, THE PRODUCT BEING THUS SOLD AS-IS, WITH ALL FAULTS. FURTHER, VENDOR SHALL HAVE NO LIABILITY WHATSOEVER TO PURCHASER OR ANY THIRD PARTY FOR ANY SPECIAL, INDIRECT, PUNITIVE, INCIDENTAL, OR CONSEQUENTIAL DAMAGES. OTHER THAN THIS LIMITED WARRANTY, THERE ARE NO WARRANTIES WHICH EXTEND BEYOND THE DESCRIPTION ON THE FACE HEREOF. Vendor assumes no responsibility for any defects caused by third parties. This Limited Warranty gives you specific legal rights, and you may have other rights which vary from state to state. State law may also override statements in this Limited Warranty regarding the restriction on the duration of implied warranties. Some jurisdictions do not allow exclusion or limitation of special, incidental or consequential damages, or limitations on how long a warranty lasts, so the above exclusion and limitations may not apply to you.



WWW.BRIOWATER.COM

©2024 Brio Water Technology, Inc.