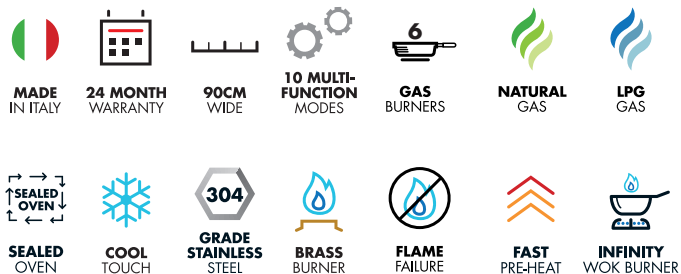


ILVE HNF96WMP SERIES

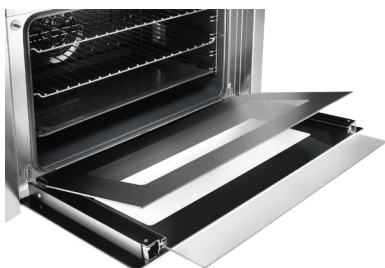
90CM FREESTANDING COOKER

GAS COOKTOP & ELECTRIC OVEN

LIVE WITH
ILVE
KITCHEN APPLIANCES
HANDMADE IN ITALY



Pictured: HNF96WMP/SS Cooker in Stainless Steel



AVAILABLE COLOURS



**STAINLESS
STEEL**

HNHF96WMP/SS



**BRIGHT
WHITE**

HNHF96WMP/WH



**GLOSS
BLACK**

HNHF96WMP/BK

EXCLUSIVE TO
Harvey Norman

ILVE HNF96WMP SERIES

90CM FREESTANDING COOKER

GAS COOKTOP & ELECTRIC OVEN

LIVE WITH
ILVE
KITCHEN APPLIANCES
HANDMADE IN ITALY

HNF96WMP FREESTANDING COOKER

90CM ELECTRIC OVEN

FEATURES

- Integrated twin cavity cooling system
- Precision thermostatic control: 0°C-250°C
- New heating fan design with better heat distribution in the oven cavity
- Turbowave Quickstart preheating function 0°C-175°C in 8 mins
- Sealed oven: lower temperatures, less food spatter
- Digital programmable timer
- A class energy rated

SAFETY

- Triple glazed glass door: tinted to keep the heat inside the oven and resulting in a 'cool to touch' door exterior
- Cool touch athermic door handles and knobs

FUNCTIONS

- Select 10 multifunction cooking modes

CLEANING

- NEW **ULTRA-EZI** Clean interior
- NEW grey enamel interior
- Removable door with dismountable inner glass for easy cleaning

CAPACITY & INTERIOR

- 97 litre oven (NET use-able space)
- Cavity size (cm) 64.5w x 36.5h x 41d
- Dual oven cavity lights on sides of oven for increased visibility

ACCESSORIES

- 2 x oven racks
- Baking tray with grill insert
- Stainless steel legs can detach for a built-in fit or are adjustable from 100mm to 160mm

90CM 6 BURNER GAS COOKTOP

FEATURES

- 75% hand built
- AS304 stainless steel construction
- New design cast iron heavy duty trivets finished in Matt Black
- Easy in-bench serviceability

SAFETY

- All gas burners fitted with flame failure cut out safety devices
- Automatic electronic ignition

CLEANING

- Easy clean removable trivets and burners
- Deep cooktop pressing designed to retain spillages

BURNERS

- Solid brass burners treated with ILVE's patented Nano technology matt black non-stick coating
- Triple ring solid brass Infinity WOK burner
- Our new burner design is up to 8% more efficient than ILVE's previous brass burners with CO₂ emission reduced by 66%
- New flame configuration with two rows of holes with a specific diameter and inclination to improve the burner and flame performance

Model: HNF 96 WMP

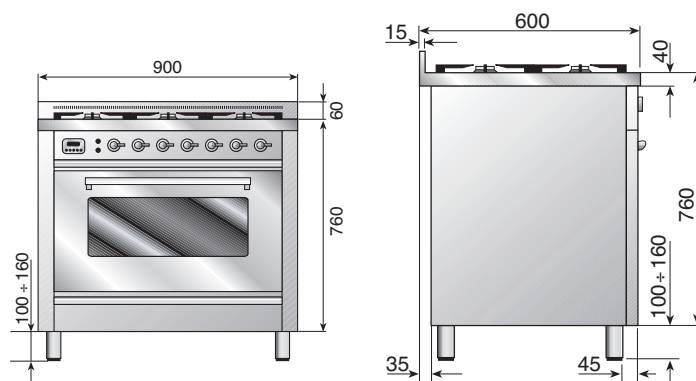
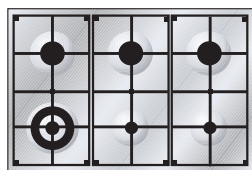
Gas consumption: 54.9 MJ/h

Total electrical load: 3.7 kW

EXCLUSIVE TO

Harvey Norman

HNF 96 WMP
6 Burner



FOLLOW US ON:



facebook.com/ILVEappliances



instagram.com/ILVE_appliances



youtube.com/ILVEappliances

BLOG

livewithilve.com

Australia National Telephone Number 1300 MYILVE (694 583) New Zealand Telephone Number 64 3 344 5913
ILVE showroom hours: Tuesday to Friday - 9am-5pm, Saturday - 10am-4pm, Sunday and Monday - closed

ilve.com.au

NSW & ACT (Head Office)

48-50 Moore Street
Leichhardt
F 02 8569 4699

VIC & SA

1211 Toorak Road
Camberwell
F 03 9809 2155

QLD

1/42 Cavendish Road
Coorparoo
F 07 3397 0850

WA & NT

Unit 10/55 Howe Street
Osborne Park
F 08 9201 9188

DISCLAIMER

Euroilux PTY LTD, trading as ILVE Appliances, is continually seeking ways to improve the design specifications, aesthetics and production techniques of its products. As a result alterations to our products and designs take place continually. Whilst every effort is made to produce information and literature that is up to date, this brochure should not be regarded as an infallible guide to the current specifications, nor does it constitute an offer for the sale of any particular product. Product dimensions indicated in our literature is indicative only. Actual product only should be used to define dimension cutouts. Distributors, and retailers are not agents of ILVE Appliances and are not authorized to bind ILVE Appliances by any express or implied undertaking or representation.