



How to Default a Uniview Camera in Different Ways?



Title:	How to Default a Uniview Camera in Different Ways?	Version:	V1.1
Product:	IPC	Date	9/26/2023

How to Default a Uniview Camera in Different Ways?

Description

Customers may encounter some problems when resetting the IPC. The methods for resetting cameras may vary between different models.

Note: This method is applicable to most scenarios. If the method cannot solve your problem, it is recommended to consult our Tech Support Team.

https://global.uniview.com/Support/Service_Hotline/

Operating Steps

Use the Reset Button to Hard Reset

Fisheye camera

Step 1 Remove the Micro SD card cover first.

Step 2 Power on the camera

Step 3 Use a toothpick or paper clip to press and hold the RST button for about 15 seconds till the web indicates that the camera is restarting.

Step 4 Then the camera will be restored to the default settings after the startup.

Note: RST button only works within ten minutes after the camera is powered on.

PTZ & Bullet camera

Step 1 Find the reset button on the back or the rear of your camera.

Step 2 Power on the camera again and perform the next step within 10 minutes.

Step 3 Press and hold the reset button for about 15 seconds until the PWR light on the camera becomes red.

Dome & Box camera

Step 1 Prepare a needle-like object such as a toothpick or paper clip first.

Step 2 Find the reset button on the back or the rear of your camera.

Step 3 Power on the camera and perform the next step within 10 minutes.

Step 4 Press and hold the reset button for about 15 seconds until the PWR light on the camera becomes red.

Title:	How to Default a Uniview Camera in Different Ways?	Version:	V1.1
Product:	IPC	Date	9/26/2023

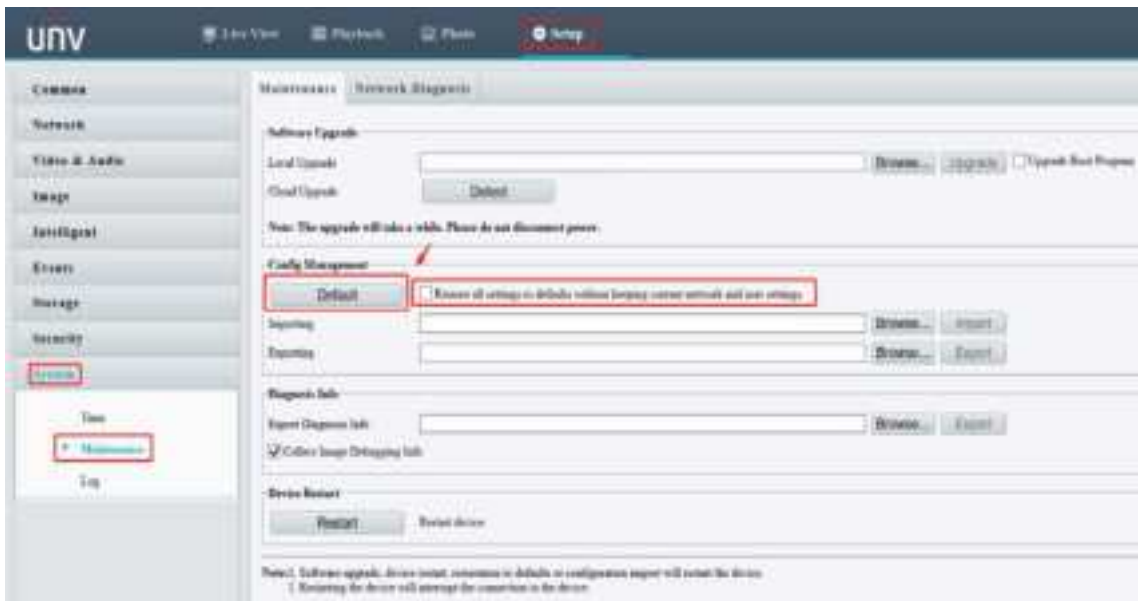
Step 5 Wait for the camera to restart. The manual reset is then completed.

Note: There are two possible outcomes for pressing and holding RST:

1. Enter/Exit auxiliary focus mode: press and hold for 3 to 10 seconds.
2. Factory reset: press and hold for more than 10 seconds

Default from the web interface of a camera

Log into the camera's web interface and default it under: **Setup>System>Maintenance> Maintenance>Config Management.**



Note: You can check Restore all settings without keeping current network and user settings if you wish to do a factory default.

Use EZtools to reset the camera

Please connect your computer to the same network with the IPC, and then download and install EZtools 3.0 or 2.0 on your windows computer first.

Note: EZTools 1.0 does not support to Default a Uniview device.

EZTools 3.0

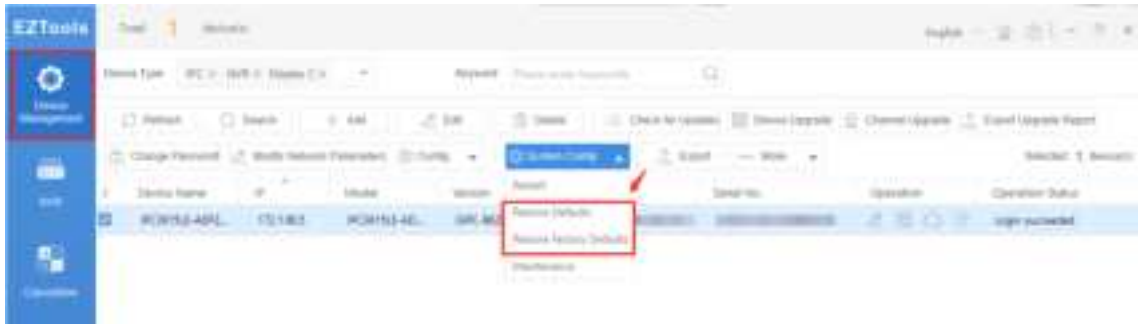
Restoring Defaults means to restore all the parameters of a device to factory defaults except network, user, and time parameters.

Select the target devices, click **System Configuration>Restore Defaults**, and then confirm.

Restoring Factory Defaults means to restore all the parameters of a device to factory defaults.

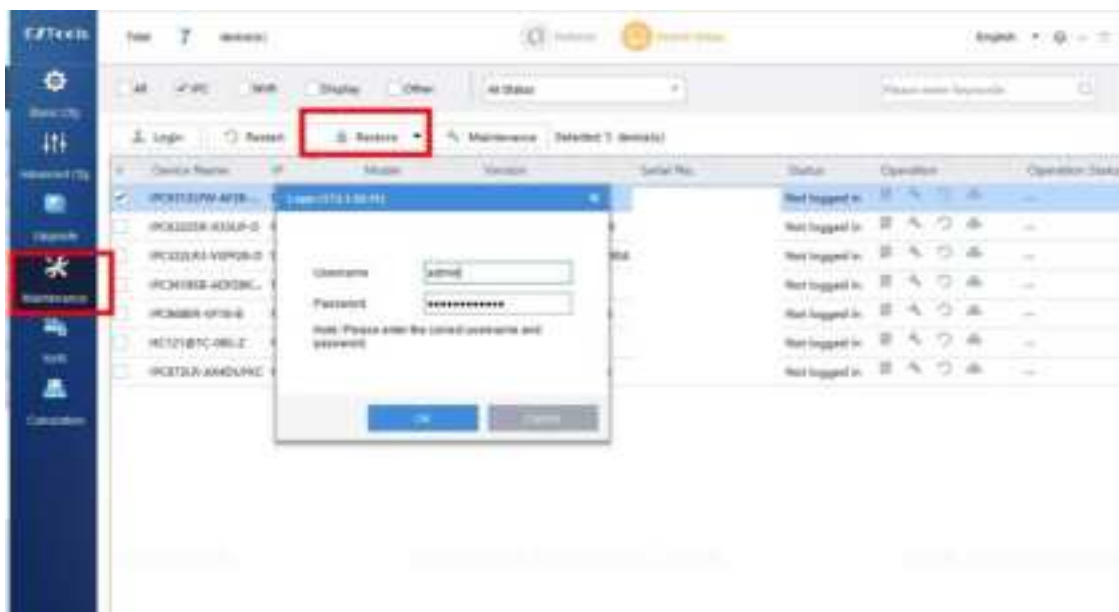
Select the target devices, click **System Configuration>Restore Factory Defaults**, and then confirm.

Title:	How to Default a Uniview Camera in Different Ways?	Version:	V1.1
Product:	IPC	Date	9/26/2023



EZTools 2.0

Log into the camera on EZtools and click **Restore** under **Maintenance** to reset it.



Note: Sometimes, the IP address of the camera cannot be found on EZtools even when they are connected to the same LAN. If this happens, please connect the cameras directly to the computer's RJ45 port to see if you can search and find its IP address on EZtools. If you can find the camera, please refer to the steps above.