



Porodo Soundtec
Air Beat
Open-Ear Wireless Earbuds

SKU: PDSTWM005

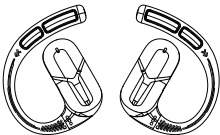
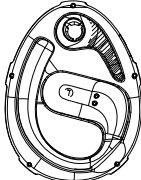

Table of Contents

Safety Precautions	2
Package Contents	2
Schematic View	3
Specifications	3
Charging Case Description	4
Indicator Status	4
Instructions for Use	5
1. Power On	5
2. Power Off	5
3. Pairing with the Bluetooth Device	5
4. Touch Button Operation	6
Restore Factory Settings	7
Material Content	7
FCC Statement	8
Disposal	9
Warranty	9
Contact Us	9

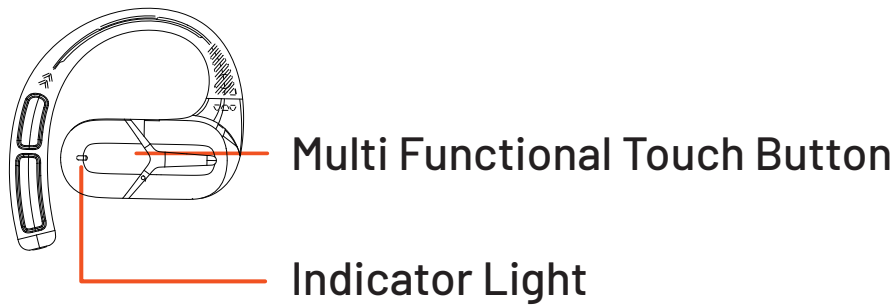
Safety Precautions

- 1. Do not attempt to disassemble the unit or replace any parts unless the manual provides specific instructions for such actions.
- 2. Keep the unit away from liquids, moisture, or humidity, as it is not a waterproof product.
- 3. If liquid enters the unit, disconnect it from your Bluetooth device and move it to a safe area.
- 4. Avoid assembling or disassembling the unit if your hands are wet, as this may lead to electric shock.
- 5. Do not expose the unit to extreme temperatures or dispose of it in fire, as this may cause an explosion.
- 6. Avoid placing the unit in environments with strong electromagnetic interference, as this may lead to malfunction.

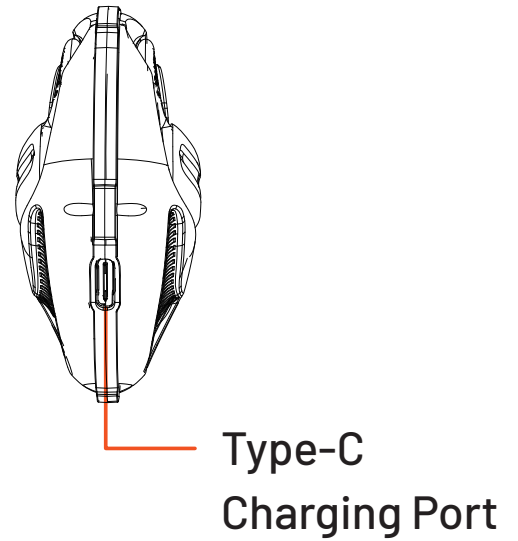
Package Contents

	Earbuds		Charging Case
		Type-C Cable	

Schematic View



Earbuds



Charging Case

Specifications

Model No	PDSTWM005
Chipset	AB5656C3
Rated Input	5V/1A
Battery Case Capacity	300mAh
Earbuds Capacity	40mAh
Charging Interface	Type-C
Bluetooth Version	V5.4
Bluetooth Name	PD_STWS_05
Playtime	Up to 5H
Recharge Time	1.5H

Maximum RF Power	6db
Wireless Transmission Range	>10M
Frequency Response	20Hz-20kHz

Charging Case Description

The charging case has a battery capacity of 300mAh and requires approximately 2 hours for a full charge. The rated input for the case is 5V = 300mA, though actual performance may vary. To charge the case, connect the Type-C cable to a 5V power adaptor and plug the other end into the charging port of the case. It's important to note that when the white indicator light on the charging compartment flashes, the case should be charged promptly to ensure optimal performance.

Indicator Status

1. Earphone Indicator Light

Power On: The white light turns on for 1 second.

Power Off: The red light turns on for 1 second.

Pairing: The indicator flashes white and red alternately during pairing.

Pairing Successful: The indicator turns off once the earphones are paired.

Charging: The red light remains steadily on while charging.

2. Charging Case Indicator Lights

Charging (Not Fully Charged): The digital display flashes to show the current power level while charging.

Fully Charged: When charging is complete, the digital display shows "100".

Discharging: The current power level is displayed digitally. A scroll bar shows the power status for both the left and right earphones.

Low Battery: The battery display blinks on a single segment to indicate a low battery level.

Instructions for Use

1. Power On

Method 1: Remove the earphones from the charging compartment, and the headset will automatically turn on.

Method 2: Press and hold the MF button on the headphones for 3 seconds to turn them on.

2. Power Off

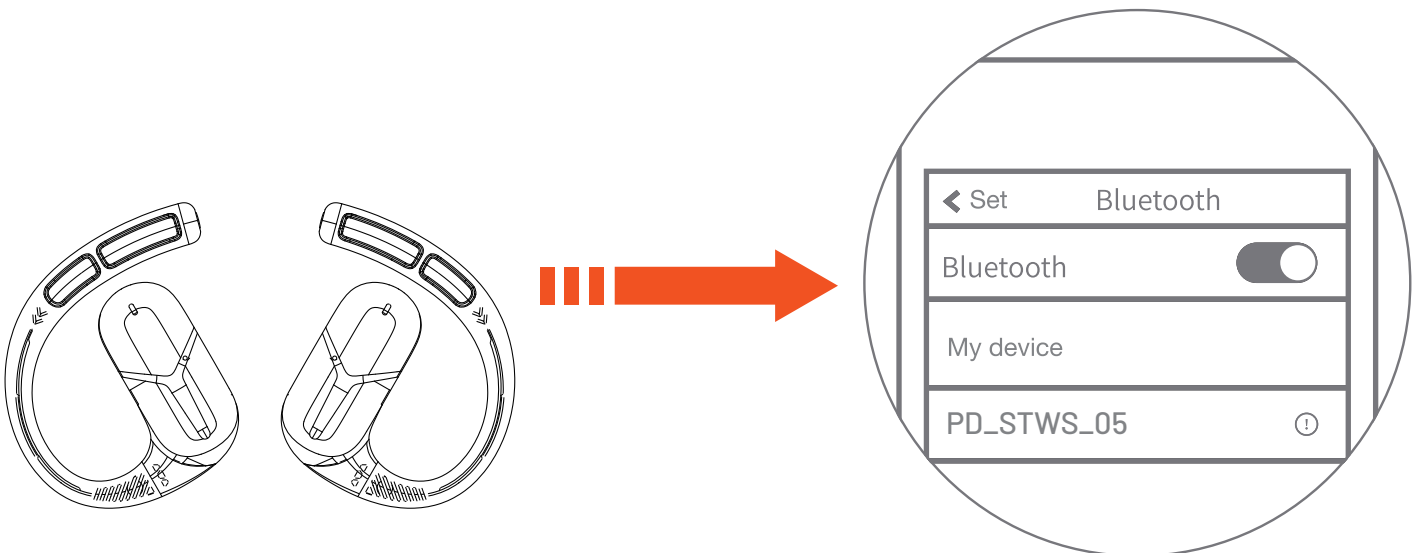
Method 1: Place the headphones back into the charging case and close the lid to turn them off.

Method 2: When both the left and right earphones are turned on, they will turn off automatically after 5 minutes of storage or disconnection.

3. Pairing with the Bluetooth Device

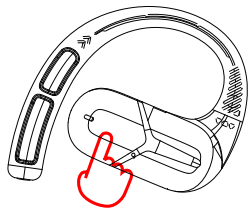
Step 1: Remove the earbuds from the charging case. The left and right earbuds will automatically pair with each other.

Step 2: Open the Bluetooth settings on your device, search for "PD_STWS_05". Select the product to Connect (single ear use is supported).



4. Touch Button Operation

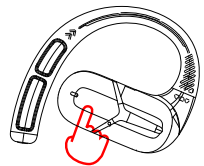
Music Playback



- Previous Song: Triple-tap the left earphone (L) touch button to skip to the previous song.
- Next Song: Triple-tap the right earphone (R) touch button to skip to the next song.
- Increase Volume: Tap the right earphone (R) touch button to increase the volume.
- Decrease Volume: Tap the left earphone (L) touch button to decrease the volume.
- Pause/Play: Double-tap any headset function button to pause or play music.

Phone Hands-Free Operation

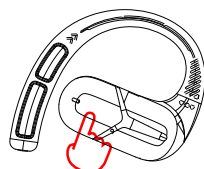
Left/Right Headphone Operation (During Incoming Call)



- Answer Call: Double-tap any headset touch button to answer an incoming call.
- Reject Call: Long-press any earphone touch button for 2 seconds to reject the incoming call.
- End Call: Double-tap any headset touch button to hang up the call.

Voice Assistant Operation

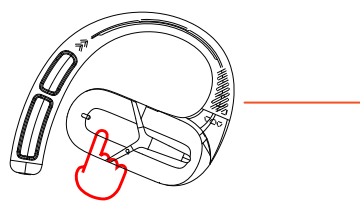
Left/Right Earphone Operation



- Activate Voice Assistant: Long-press the touch button on either earphone for 2 seconds to activate the voice assistant.

Music/Game Mode Operation

Left/Right Earphone Operation



Switch to Music/Game Mode: Long-press the right earphone (R) touch button for 2 seconds to switch between music and game modes.

Restore Factory Settings

If the headset is not paired with the phone, press the headset function button five times to clear the pairing information and turn the device off.

Material Content Table

Part Name	Harmful Materials					
	Pb	Hg	Cd	Cr (VI)	PBB	PBDE
Printed Circuit	<input type="radio"/>	<input type="radio"/>	<input type="radio"/>	<input type="radio"/>	<input type="radio"/>	<input type="radio"/>
Small Parts and Shell	<input type="radio"/>	<input type="radio"/>	<input type="radio"/>	<input type="radio"/>	<input type="radio"/>	<input type="radio"/>

This form is compiled in accordance with SJ/T 11364.

O: Indicates that the content of the hazardous substance in all homogeneous materials of the part is below the limit requirements specified in GB/T 26572.

X: Indicates that the content of the hazardous substance in at least one of the homogeneous materials of the part exceeds the limit requirements specified in GB/T 26572.

Parts marked with "X" on the form are considered harmful due to the limitations of global technological development. Substitution of these substances is encouraged.



Environmental Protection Use Period:

Electronic and electrical products sold in the People's Republic of China must display this logo. The number in the logo represents the product's environmental protection use period under normal usage conditions.

FCC Statement

According to Part 15 of the FCC Rules, this device has been tested to meet the restrictions for Class B digital devices. These restrictions are intended to provide reasonable protection against harmful interference in residential areas. The device generates and uses radiofrequency energy. If this instruction is not installed and used in accordance with the regulations, it may cause harmful interference to radio communications. However, there is no guarantee that interference will not occur in a particular installation.

If this device is built for radio or television reception and causes harmful interference, the interference can be resolved by turning the device off and on. If interference persists, the user is encouraged to try one or more of the following measures:

Redirect or reposition the receiving antenna.

Increase the distance between the device and the receiver.

Connect the device to sockets on circuits different from those used by the receiver.

Consult a dealer or an experienced radio/TV technician for assistance.

This device complies with Part 15 of the FCC Rules. The operation is restricted by the following two conditions:

The device shall not cause harmful interference.

The device must accept any received interference, including interference that may cause unexpected operation.

Changes or modifications not explicitly approved by the responsible party for compliance may void the user's permission to operate the device.

Disposal

This product must not be disposed of as unsorted household waste. It is important to separate such waste for proper treatment and recycling, in compliance with local waste management regulations.

Warranty

Products that you buy directly from our **Porodo** website or shop come with a 24-month warranty.

When you buy **Porodo** products from any of our approved sellers, you only get a 12-month warranty. If you want to extend this warranty, go to our website at **porodo.net/warranty** and fill out the form with your information. Don't forget to upload a picture of the product too. After we've checked and accepted your request, we'll send you an email to confirm that your product's warranty has been extended.

For more info, please check:
porodo.net/warranty

Contact Us

If you have any questions about this Privacy Policy, please contact us at:
info@porodo.net

Website: **porodo.net**

Service Support: **support@porodo.net**

Instagram: **[porodo](https://www.instagram.com/porodo)**