

GALAXY & PLANETARIUM STAR LIGHT PROJECTOR

WITH 13 LIGHT FILMS

KAGXYLTPRJA

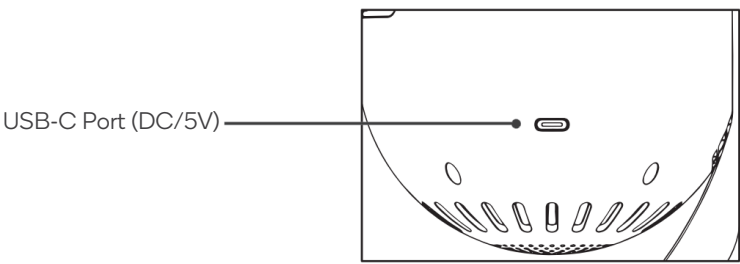
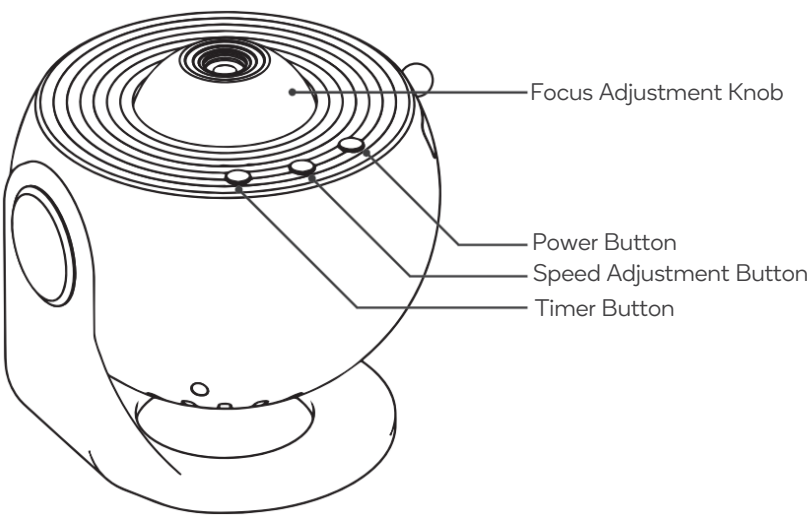
SAFETY & WARNINGS

- Read all instructions carefully and retain this user guide for future reference.
- Inspect the projector to ensure it is in good working condition before use.
- Do not disassemble the projector or attempt to repair it yourself. If the projector is damaged, cease use immediately and contact **help.Kogan.com** for support.
- Use this projector in a dark indoor environment.
- This projector requires a DC 5V/2A power adapter (not provided).

COMPONENTS

- Galaxy Projector
- USB-C cord
- Light Films Discs (x13)
- User Guide

OVERVIEW



OPERATION

Before Use

- Insert the film with the ‘UP’ engraving facing upward into the film tray (refer to the following section for instructions on replacing the film disc).
- Connect one end of the provided USB-C cord to the USB-C port on the projector and the other end to a DC 5V/2A power adapter (not provided). The projector will automatically project the image.
- By default, the projector operates at a slow rotating speed and will shut off automatically after 4 hours.
- After 40 minutes of operation, the projector enters the slow flashing projection mode.

Power On/Off

Press the Power button to turn the projector on/off. The projector powers on automatically when plugged in.

Rotation Speed

Press the Speed Adjustment button to change the rotation speed. The speed is set to slow by default.

Rotation Speed	Indicator
Slow	‘S-’ indicator illuminates.
Fast	‘S+’ indicator illuminates
Stop	No indicator.

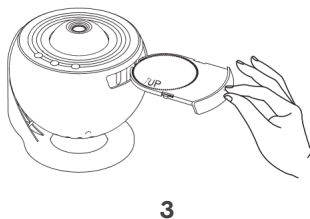
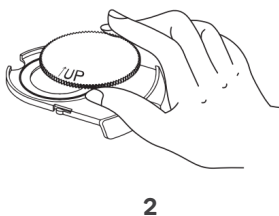
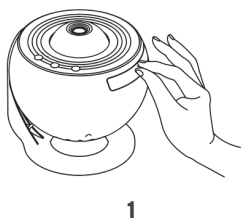
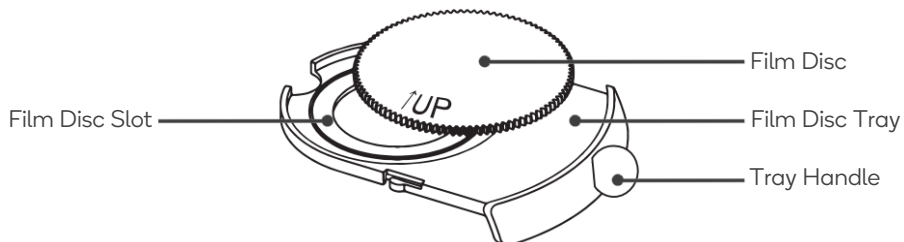
Timer Setting

- The projector powers off after 4 hours, and timer indicator is off by default.
- Press the Timer button to set a 1-hour timer; the ‘1H’ indicator will illuminate.
- Press again to set a 2-hour timer; the ‘2H’ indicator will illuminate.
- Press once more to cancel the timer setting and revert to the 4-hour auto shut-off.

Change the Film Discs

This projector comes with 13 film discs. To change the film disc:

1. Pinch the tray handle and pull out the film disc slot
2. Place a film disc with the engraved '↑UP' side facing upwards into the film slot.
3. Reset the tray back into the projector.

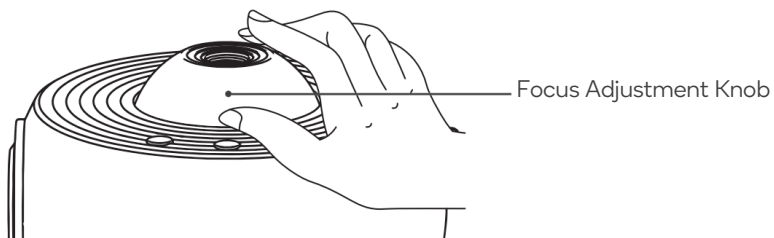


Note:

Replace the film disc while the projector is powered off.

Adjust the Focus

- This projector supports projection focus adjustment within a range of 0.5m-3m (1.64-9.84ft).
- To adjust the projection focus, refer to the current projection clarity and rotate the focus adjustment knob forward or backward to achieve a clearer projection effect.



SPECIFICATIONS

Material	ABS.
Power Input	DC 5V/2A..
Maximum Power	10W.
Projection Method	Film disc projection.
Projection Area	The projection area is 7m ² ~16m ² /75.3ft ² ~172.2ft ² at a 2m~3m/6.56ft~9.84ft projecting distance, and so on.
Projection Source	LED light bead.
Projection Distance	0.5m-3m/1.64-9.84ft.
Operating Temperature	-20°C~50°C/-4°F~122°F.
Storage Temperature	-20°C~60°C/-4°F~140°F.
Operating Environment	Use in a dark indoor environment.

Need more information?

We hope that this user guide has given you the assistance needed for a simple set-up.

For the most up-to-date guide for your projector, as well as any additional assistance you may require, head online to **help.kogan.com**

kogan.com