

Required Tools: (Not included)

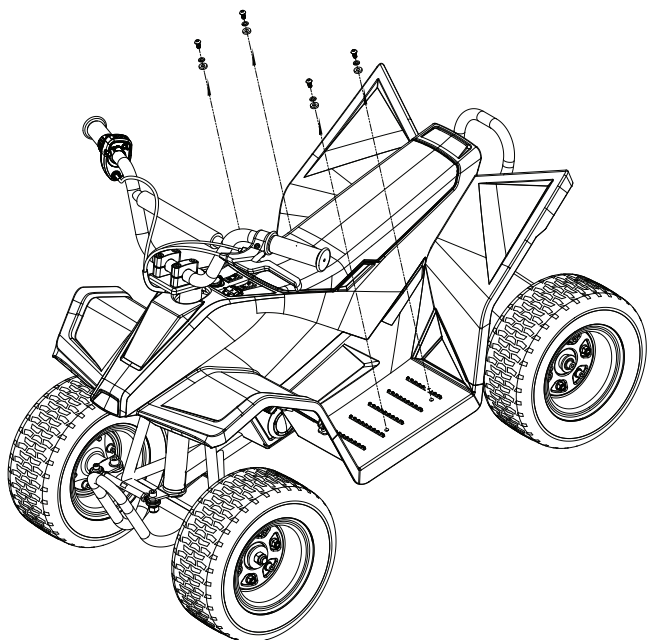
- Phillips screwdriver
- 5 mm Allen wrench
- 4 mm Allen wrench
- 13 mm open wrench
- 10 mm open wrench

⚠ WARNING

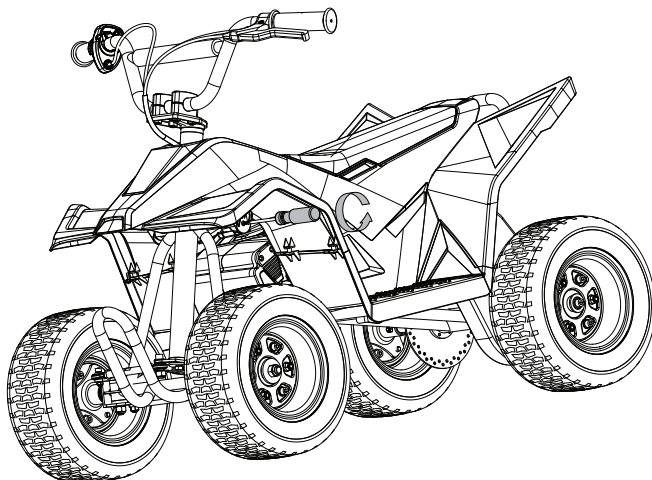
⚠ CAUTION: To avoid potential shock or other injury, turn power switch OFF and disconnect charger before conducting any assembly or maintenance procedures. Failure to follow these steps in the correct order may cause irreparable damage.

Step 1

Using a 5 mm Allen wrench, remove the four (4) bolts located on the footrests.

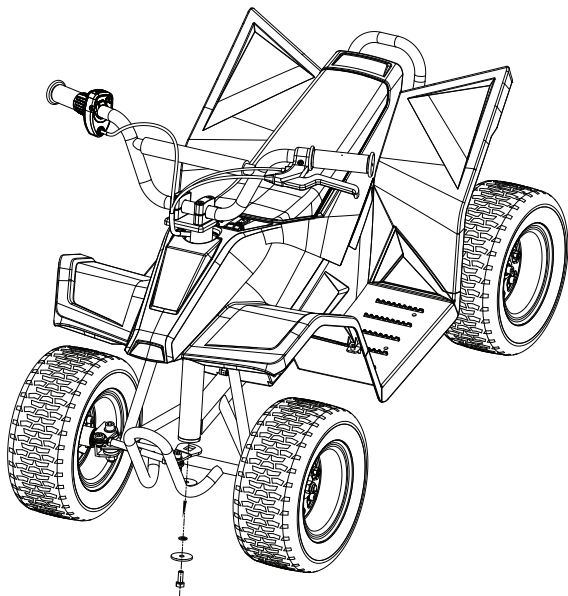
**Step 2**

Using a Phillips screwdriver, remove the two (2) screws on both the left and right sides of the front of the unit.



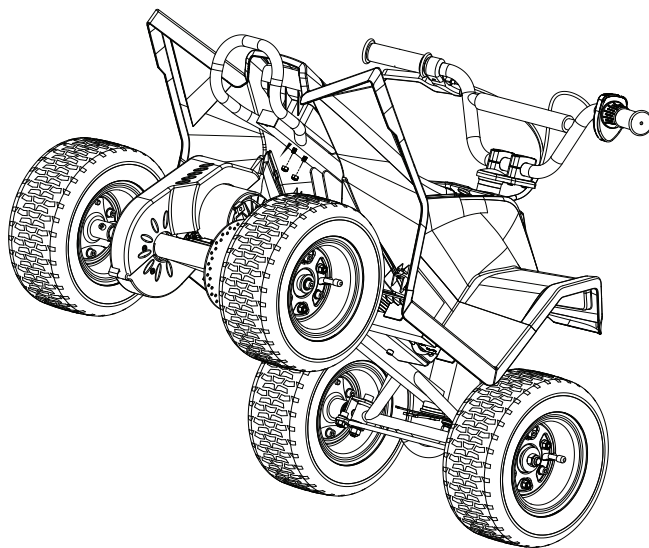
Step 3

Using a 13 mm open wrench, loosen and remove the bolt from the steering arm that connects it to the steering tube.



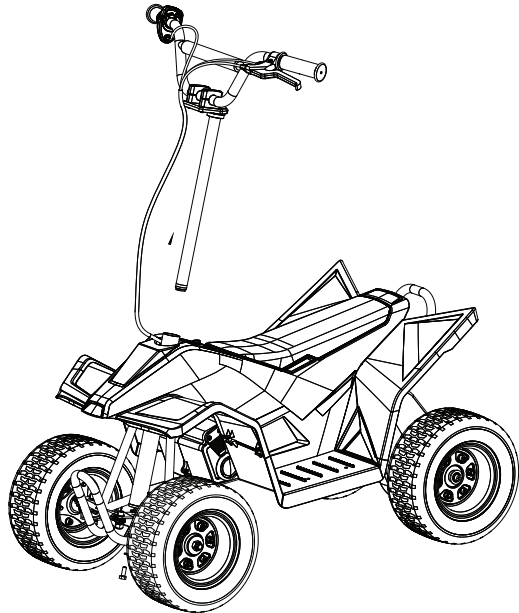
Step 4

Using a 10 mm open wrench, remove the two (2) lock nuts under the seat.



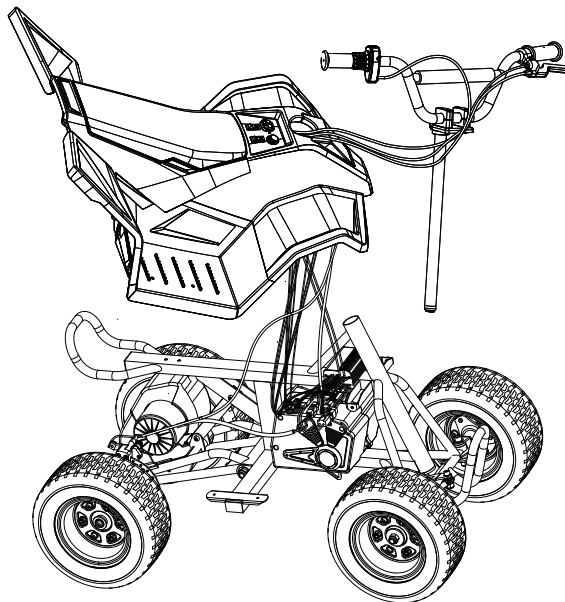
Step 5

Lift and remove the steering tube from the frame. The brake cable may need to be disconnected from the caliper.



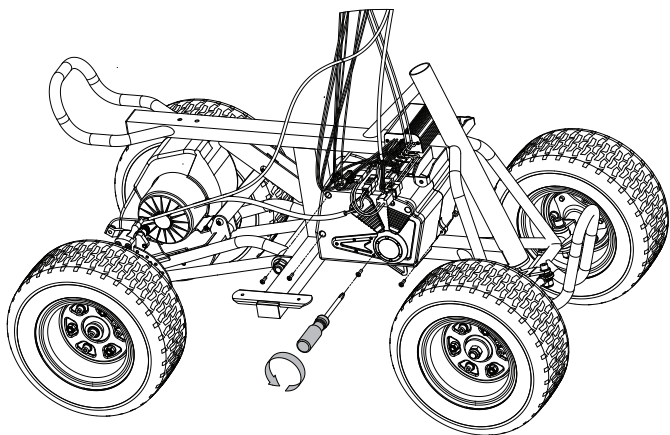
Step 6

Lift and remove the body fairing from the unit. Unplug the connectors between the battery and the controller.



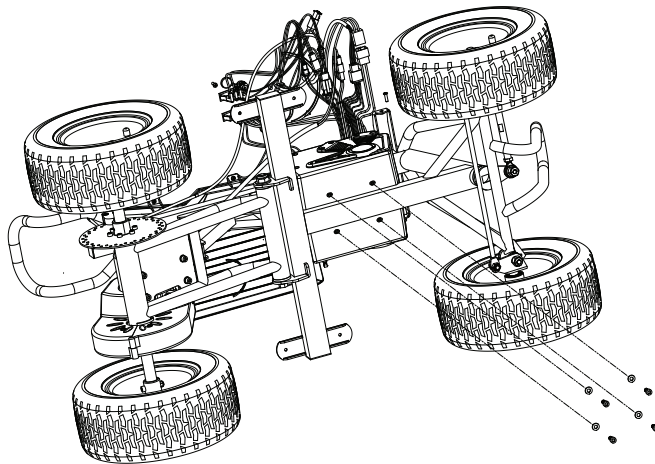
Step 7

Using a Phillips screwdriver, remove four (4) screws from the right side of the battery cover.



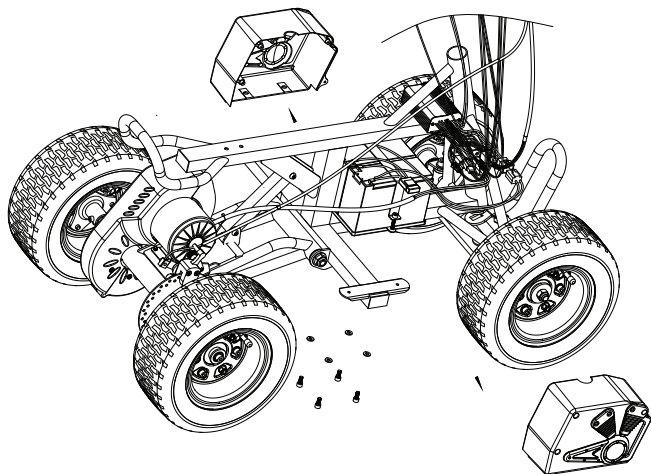
Step 8

Using a 5 mm Allen wrench, loosen and remove the four (4) hex bolts located on the bottom of the battery cover.



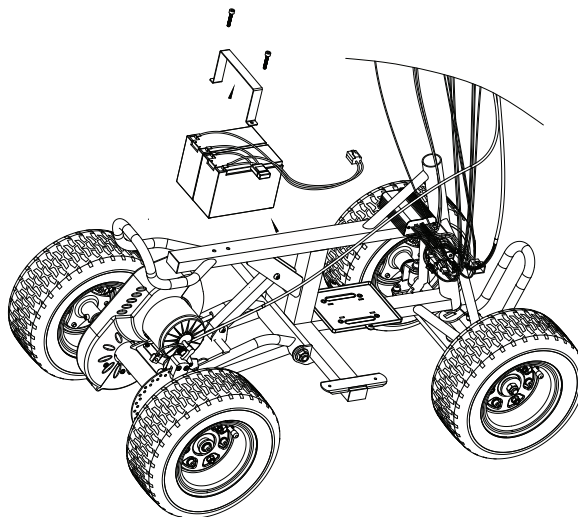
Step 9

Remove the battery covers.



Step 10

Using a 4 mm Allen wrench, loosen and remove the two (2) hex bolts that hold the battery bracket in place. Use both hands to lift and remove the batteries.



Step 11

To install a new battery, reverse steps 1-10.

ATTENTION: Charge battery 12 hours before using.