

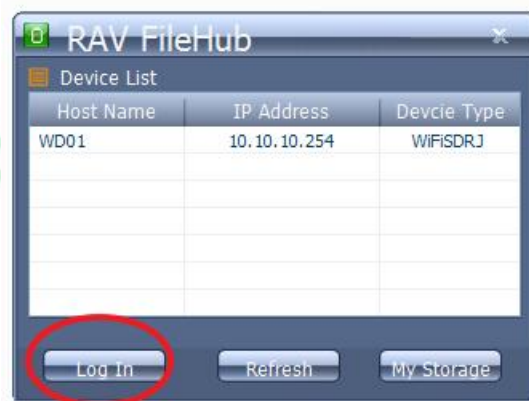
---

## Instruction with Screenshot for Windows System

1. Download the software for Windows from:  
<http://www.ravpower.com/downloads-RP-WD02.html> -- [RAV\\_FileHub\\_V1.0.8.2.rar](#)
2. Install the software, simply double click software and follow the on-screen instruction. And there should be a "RAV FileHub" icon on your PC/Laptop.



3. Power on the RP-WD01 Wi-Fi Disk. Choose "FileHub-XXXX" to connected in your Network connection. The password is "11111111".
4. Create a shortcut on your main screen, and double click the "RAV FileHub" icon on your PC/Laptop. The software utility will search all the connected devices in your network.



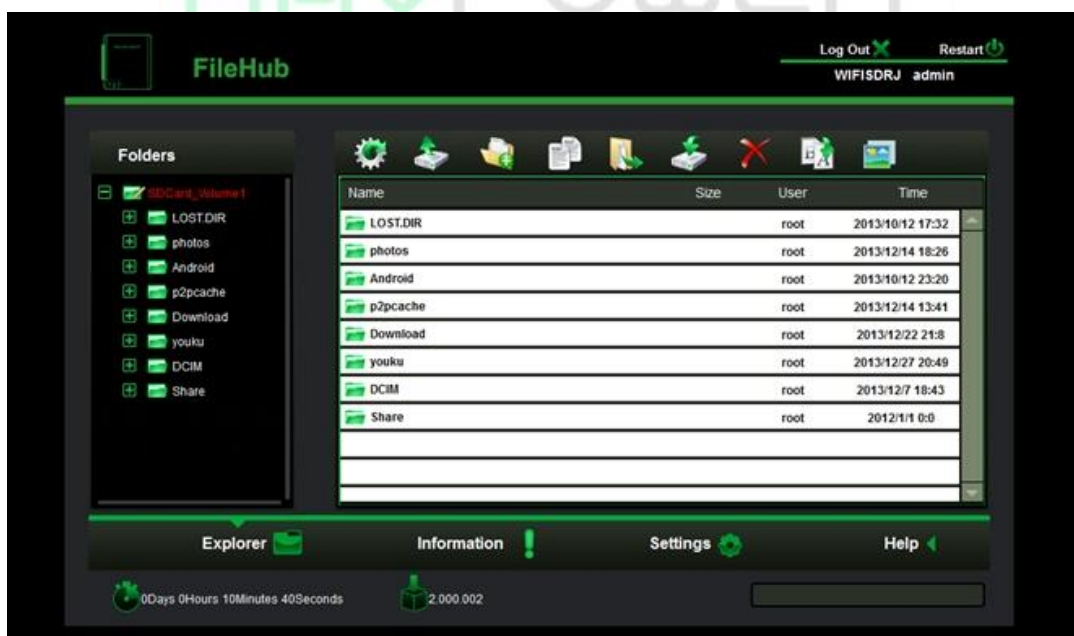
5. Select the WD01 on the list and click "Login" on the left corner, and you can enter into the login screen (User Name: admin / leave password blank. Click "Login").



*There are 4 main webpage Management Interface:*

1. Explorer Function:

Allow the user to upload files to the devices, create new folders, copy, move, delete and rename the folders or files.



Refresh Button – To refresh the display.



Upload Button – To upload the files in your PC/Laptop to Micro SD Card or USB External storage devices.



Create Folder – To create new folders on you Micro SD Card or USB External storage devices.



Copy Button – To copy files and paste them into another folder.



Cut/Move Button – To move files and paste them into another folder.



Download Button – To download files to your PC/Laptop.



Delete Button – To delete the files you do not need any more.



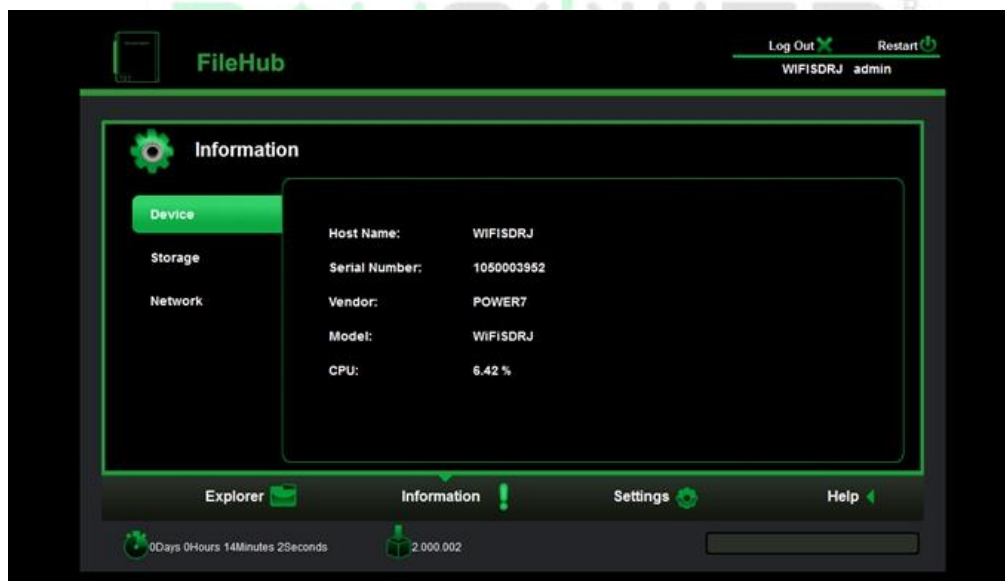
Rename Button – To rename the file or the folder.



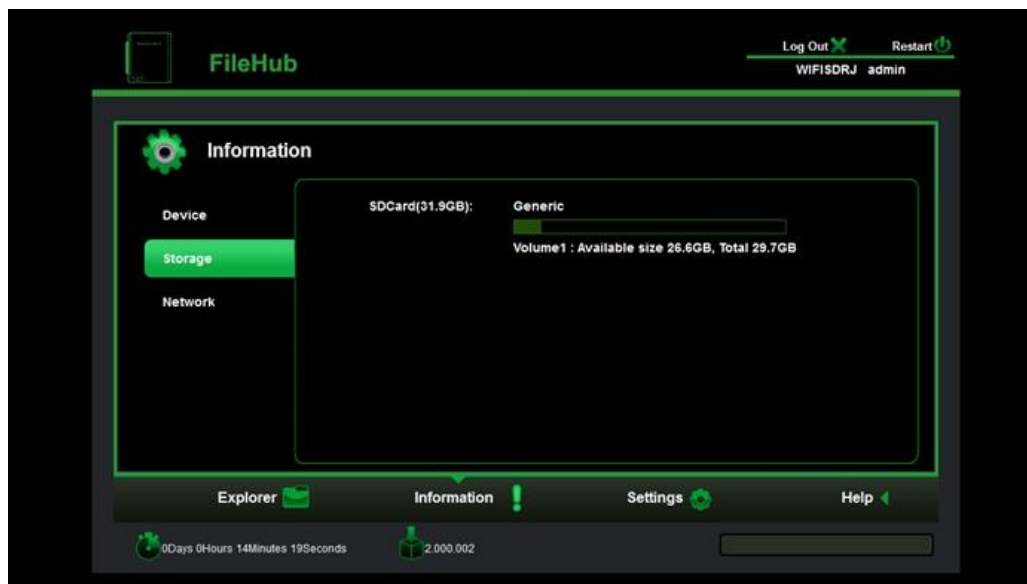
Photo Viewer – To view the photos on one folder with slide.

## 2. Information Function:

- 1> Device: You can see all the information of the RP-WD01, including the host name, serial number, model etc.



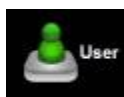
- 2> Storage: Provides information of the Micro SD Card or USB external storage device, including the brand, total capacity, available capacity.



- 3> Network: Provide detailed information regarding the current network setting, including the connections access to the Internet, WIFI SSID and IP address.



### 3. Setting Function



#### User Setting:

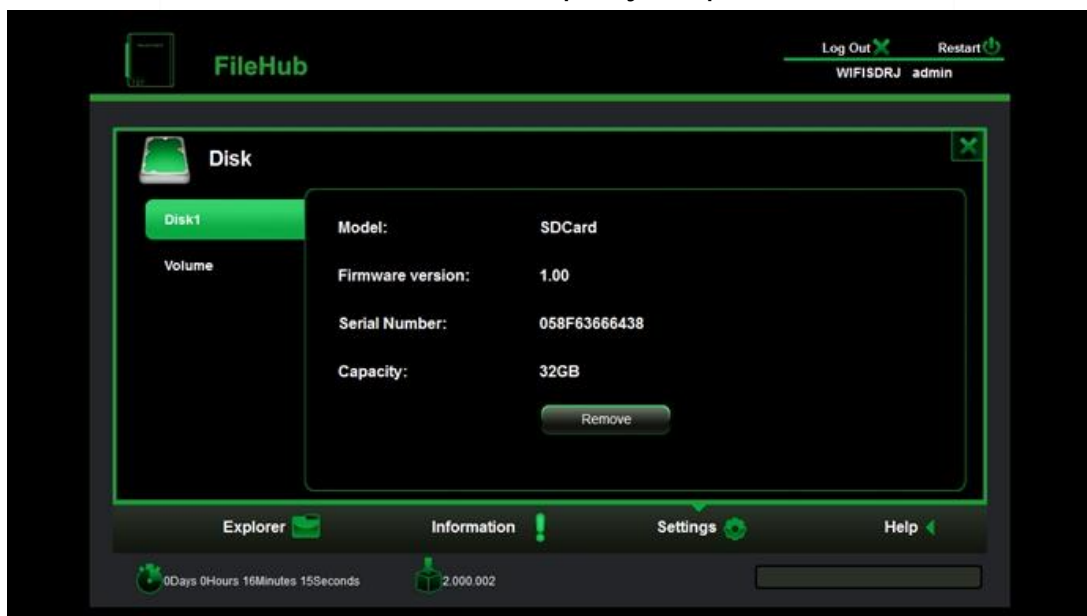
This window will allow you to modify the admin password (5 characters minimum and 32 characters maximum.)



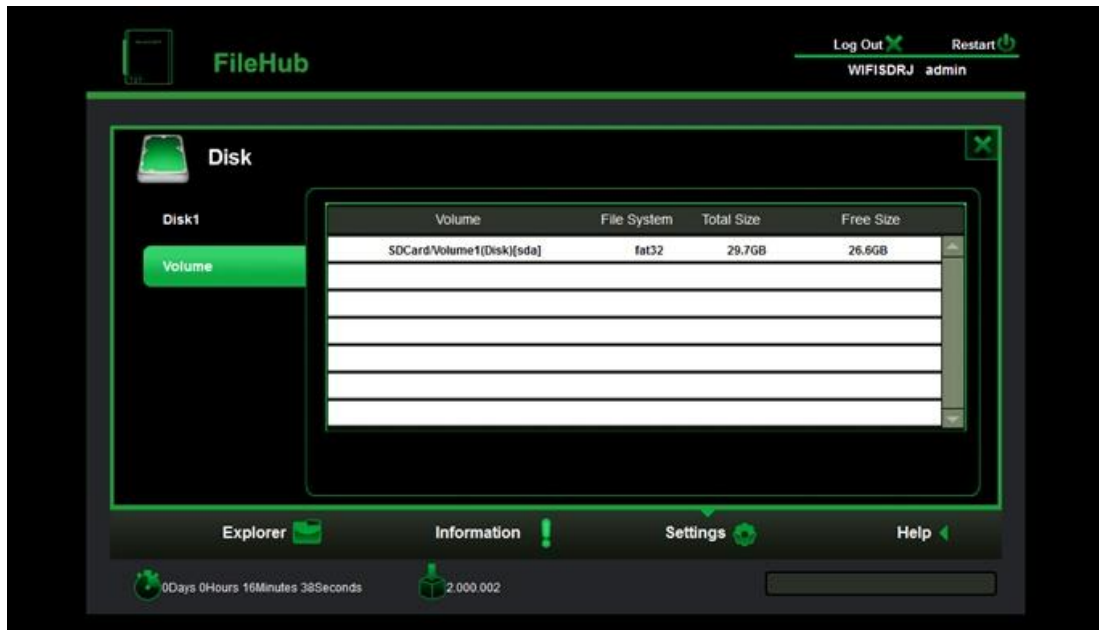
#### Disk Setting:

This window provides information regarding the internal hard drive as seen on the screenshot below.

- 1> Disk: It provides detailed information for RP-WD01, including firmware version, serial number, disk total capacity, temperature, and more.

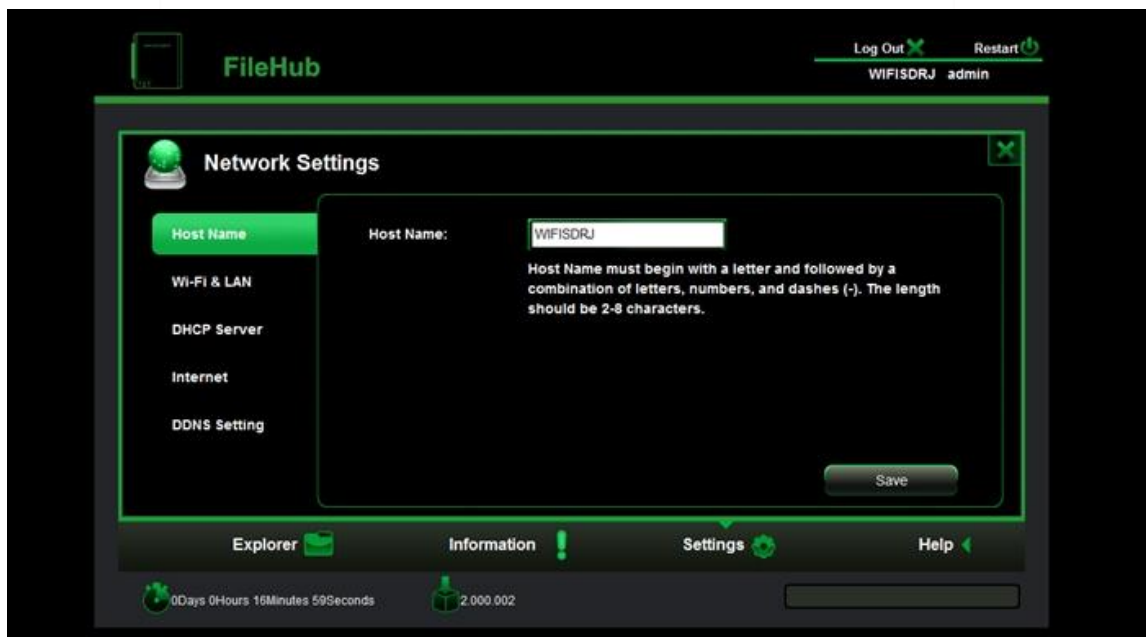


- 2> Volume: It provides information regarding the File System used to format the internal hard disk drive, total and available capacity.

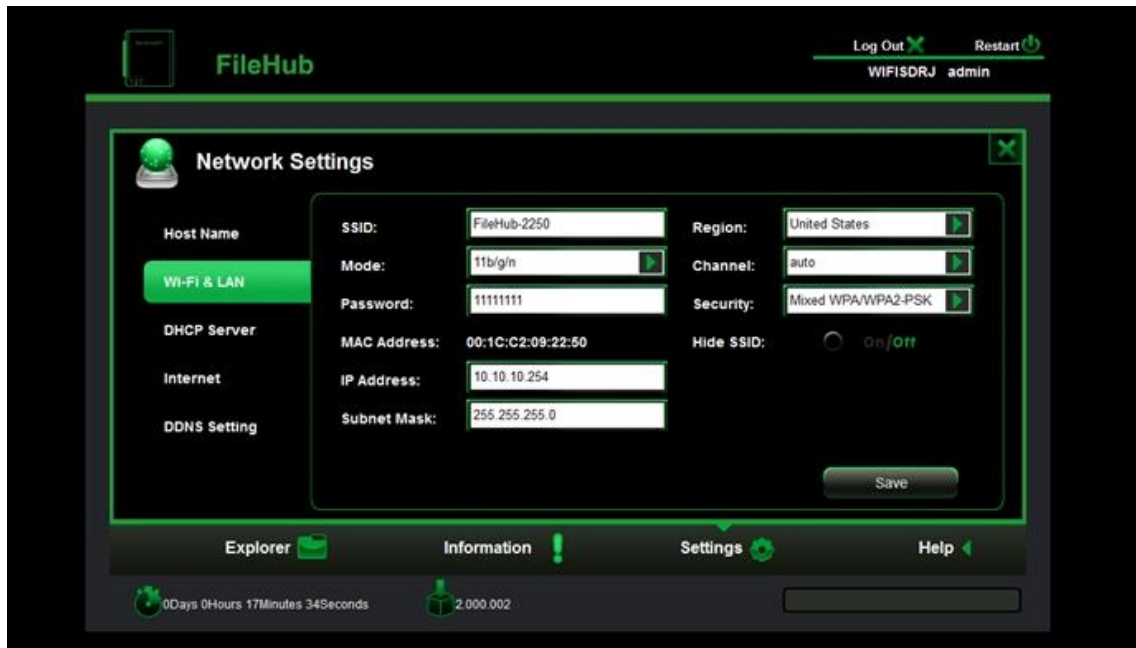


#### Network Setting:

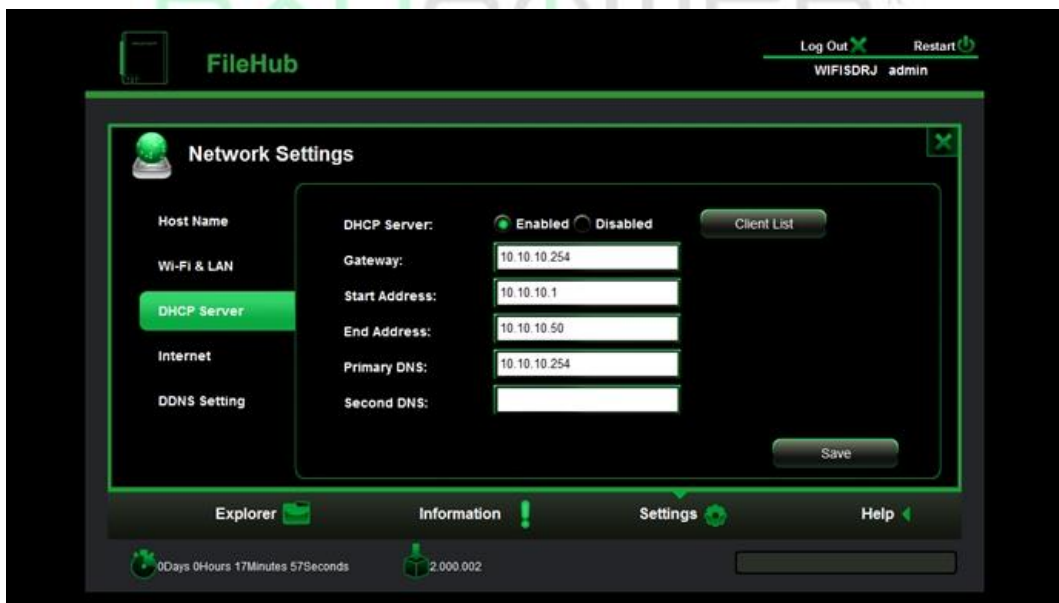
- 1> Host Name: The Hostname is a name that is assigned to a device connected to a computer network. It can be modified to whatever name that will fit your needs. (It must begin with a letter and followed by a combination of letters and numbers. Required minimum 2 characters to maximum 8 characters in length.)



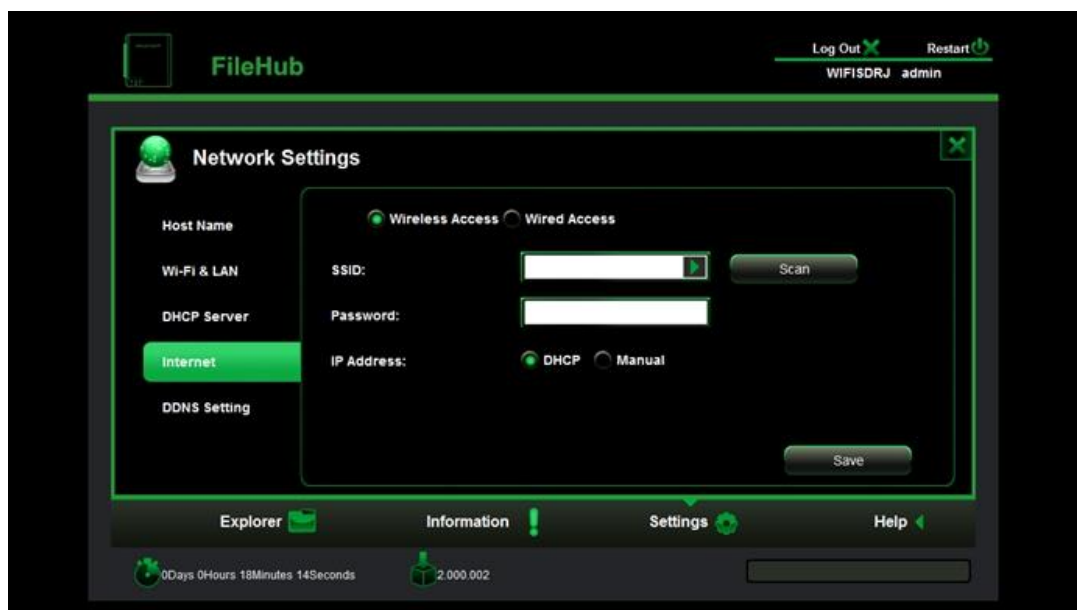
- 2> WiFi & LAN: The WiFi & LAN can be modified based on your needs.



- 3> DHCP Server: The DHCP or Dynamic Host Configuration Protocol is a network protocol that enables a server to automatically assign an IP address to a computer connected into a network. By default, the DHCP Server option is enabled. And this option can be disabled if needed and the IP address can be manually assigned.



- 4> Internet: There are two available Internet Access options.
- Wireless Access - Access Point (AP) + Client: Connecting the Wi-Fi SD/USB to another wireless device to have the internet access.

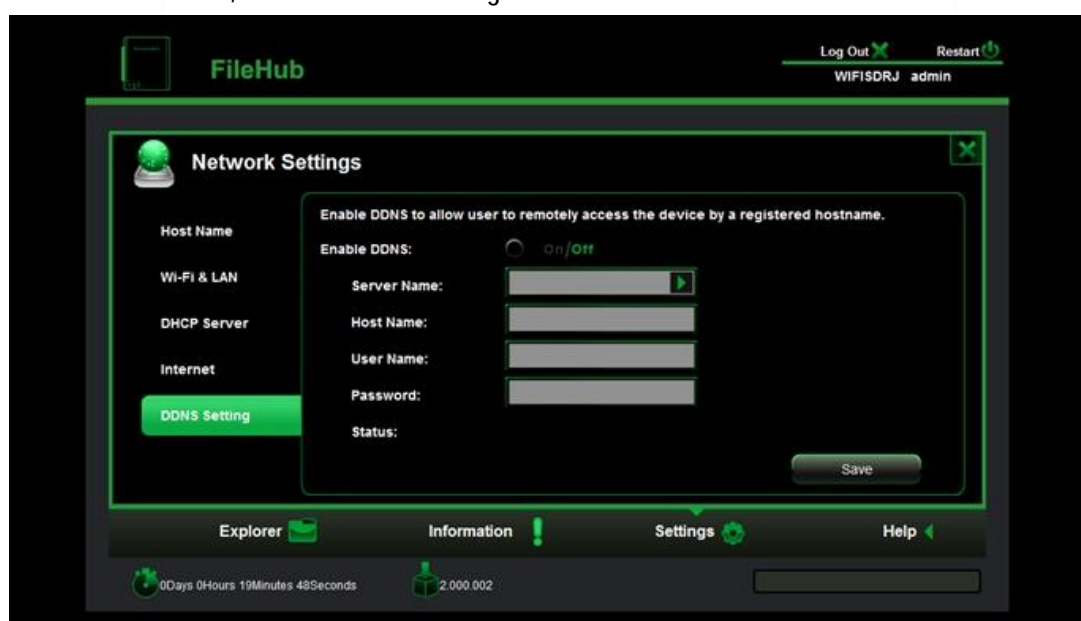


- b. Wired Access - WAN: Directly connecting the Wi-Fi SD/USB to the available port on the back the router.



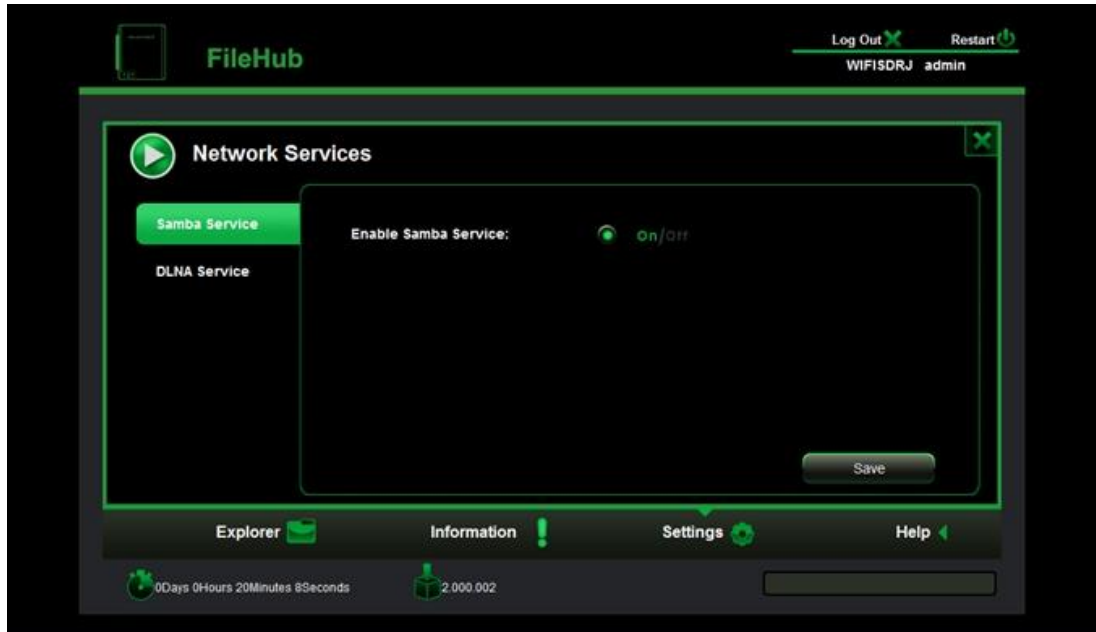


- 5> DDNS Setting: Enable DDNS to allow users to remotely access the device by a register hostname, and the default setting is "Enable DDNS: off"

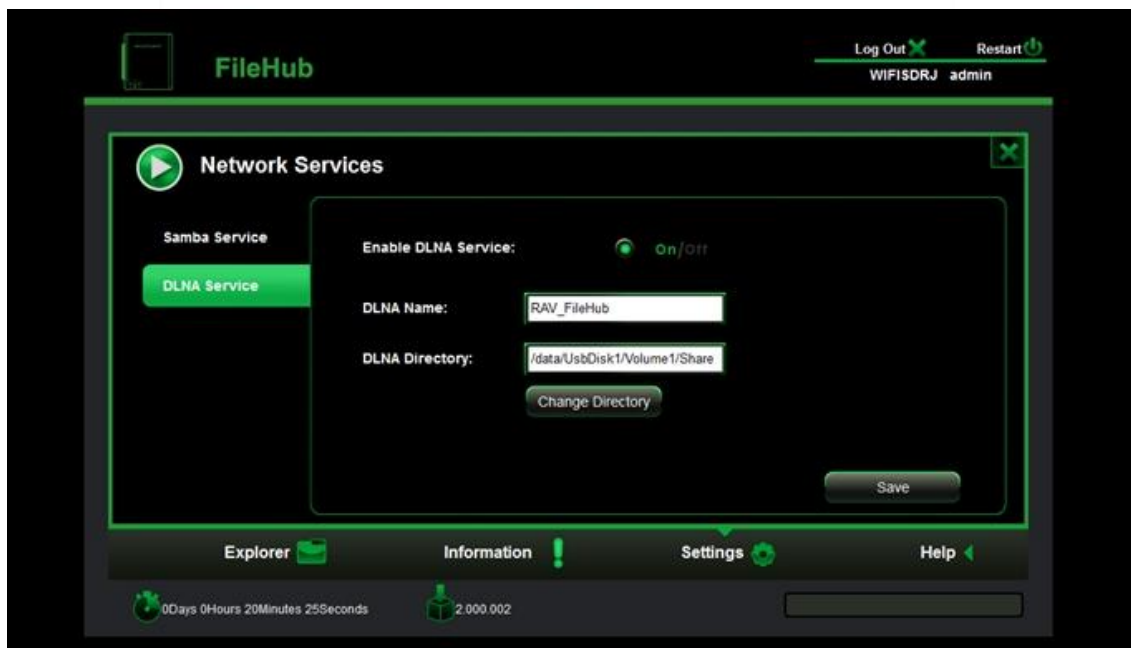


## Network Service Setting

- 1> Samba Service: Default "On" Status, which enable you use third party APP with SMB function to view the files on your Micro SD Card or hard drive via the FileHub.



- 2> DLNA Service: Enable you to view your files on any third app / players supports UPNP/DLNA; you have set up this service before you use it. (Note: Make sure you have insert an Micro SD Card or hard drive when you setting this function).



Step 1: Enable the DLNA Service

Step 2: Input the DLNA display Name

Step 3: Change Directory and find the "Share" Folder on your Micro SD Card/hard drive.

Step 4: Save the setting.

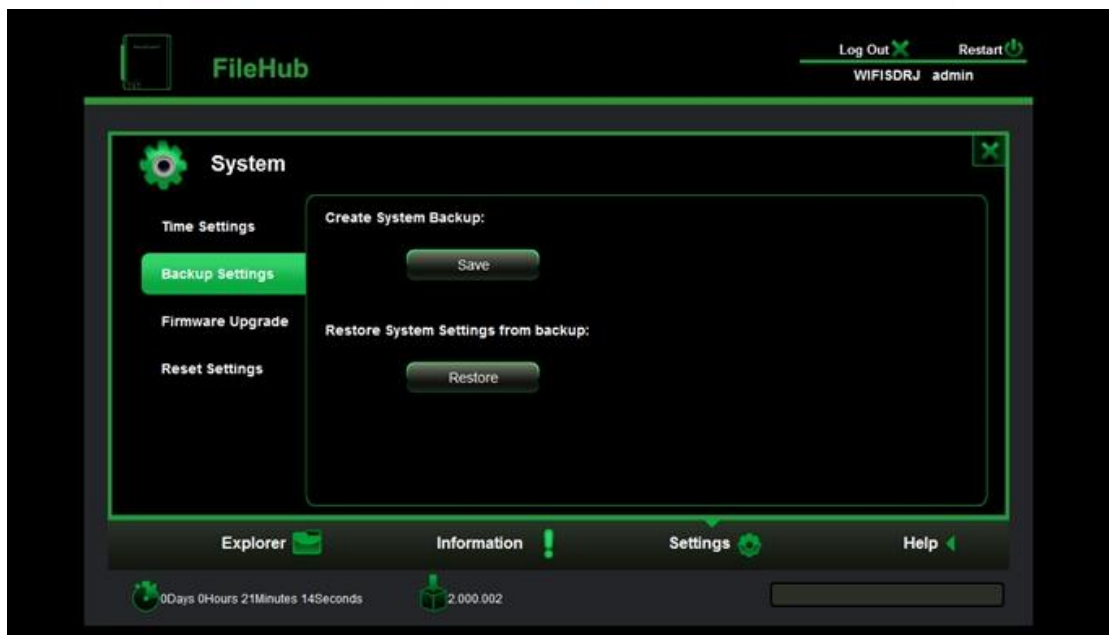


### System Setting:

- 1> Time Setting: Choose to synchronize time with the Internet or the time on your PC.

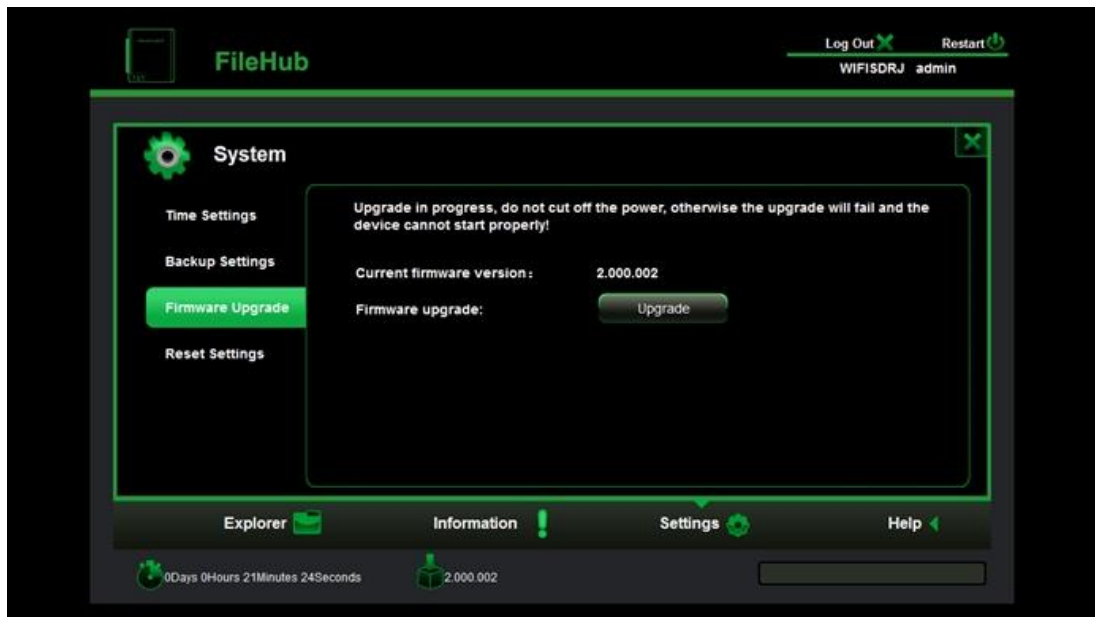


- 2> Backup Setting: To save the Wi-Fi SD/USB system configuration. Please note that this process will not create a backup of the Wi-Fi SD/USB contents.

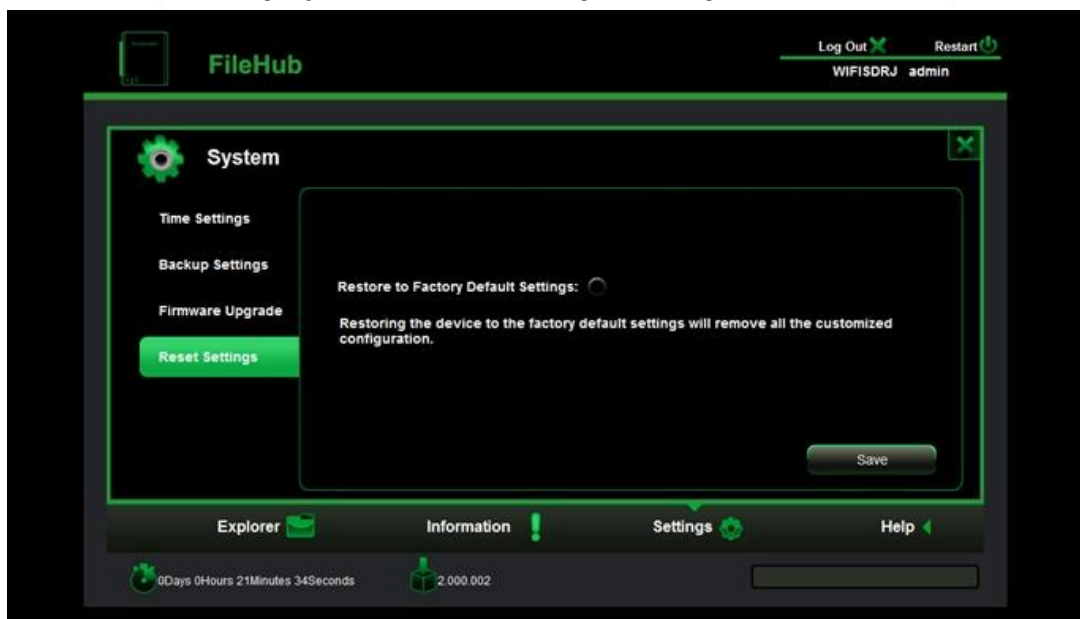


- 3> Firmware Update: Update the latest version of the firmware. You can download the latest firmware version on our website.

<http://www.ravpower.com/downloads-RP-WD02.html>---- [Firmware\\_update\\_2.000.004.rar](#)

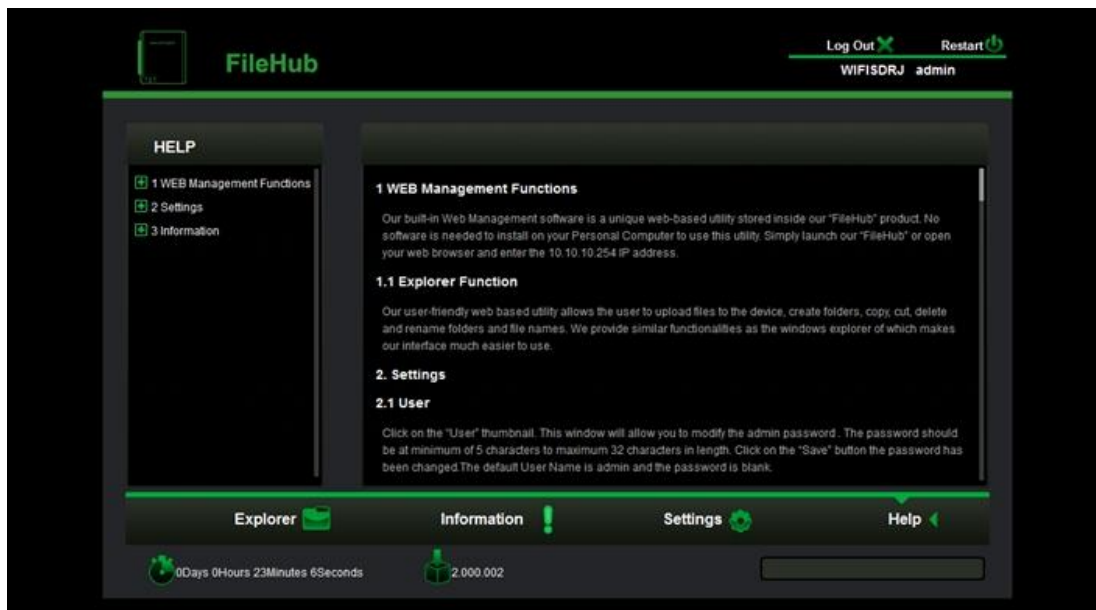


- 4> Reset Setting: Resetting to factory defaults will reset all your customized settings or whatever changes you made back to its original settings



#### 4. Help Function:

A detailed operating instruction about the function of the RP-WD01.



Thank you very much for your support! Any other questions, please feel free to contact us at [support@ravpower.com](mailto:support@ravpower.com) .

RAVPOWER®