

Installation of thermostat in the app

Make sure your router is within range of your smartphone. Make sure you are connected to the Internet. This will reduce the pairing time of the device. Use only Wi-Fi 2,4GHz network

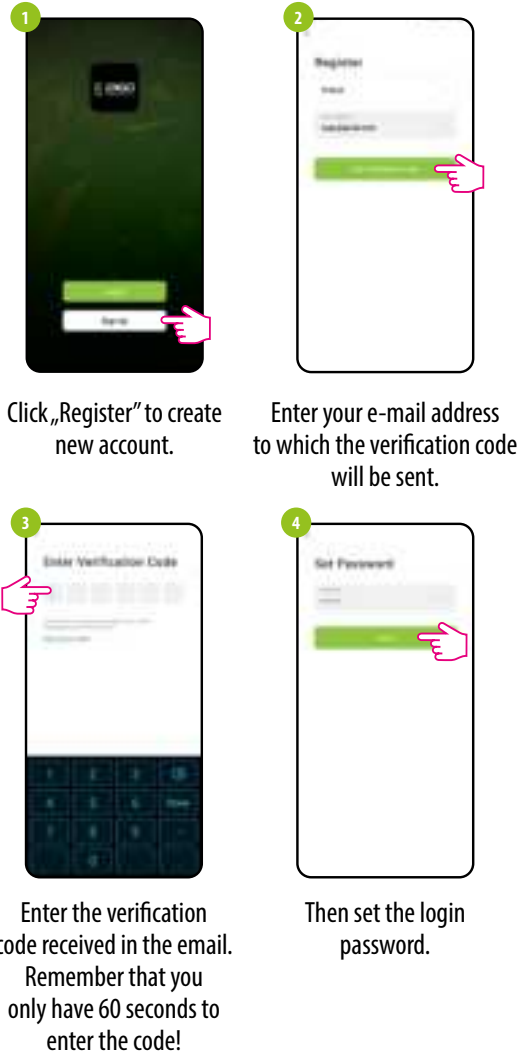
STEP 1 - DOWNLOAD ENGO SMART APP

Download the ENGO Smart app from Google Play or Apple App Store and install it on your smartphone.



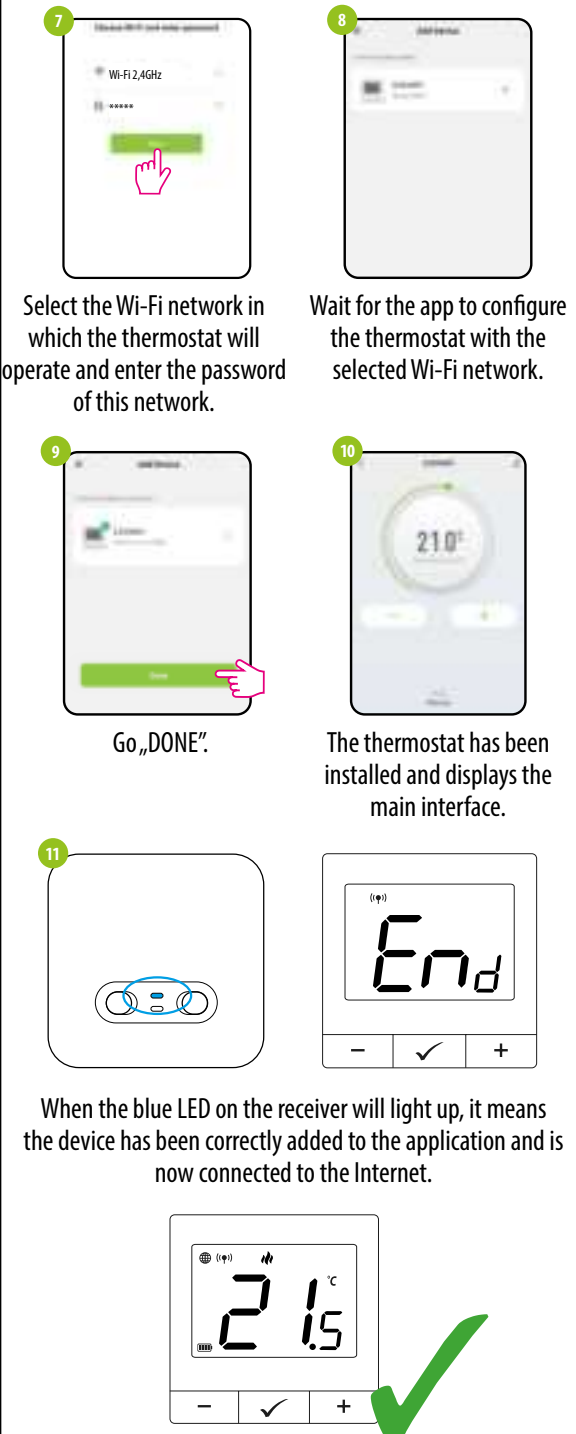
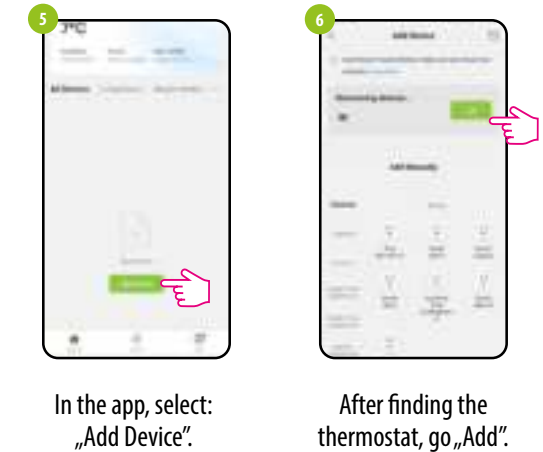
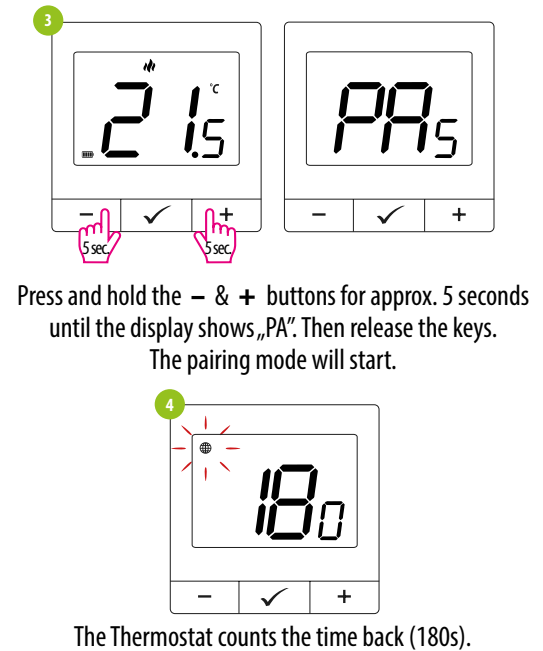
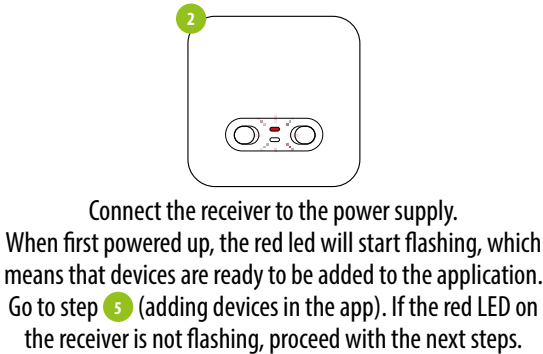
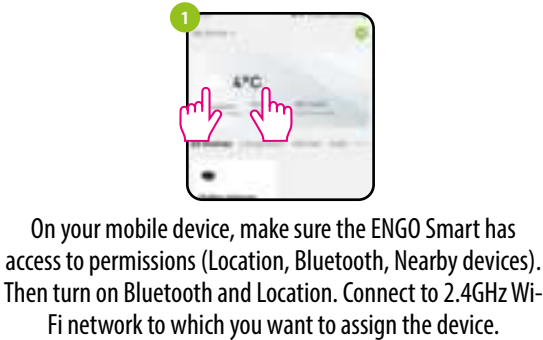
STEP 2 - REGISTER THE NEW ACCOUNT

To register a new account, please follow the steps below:



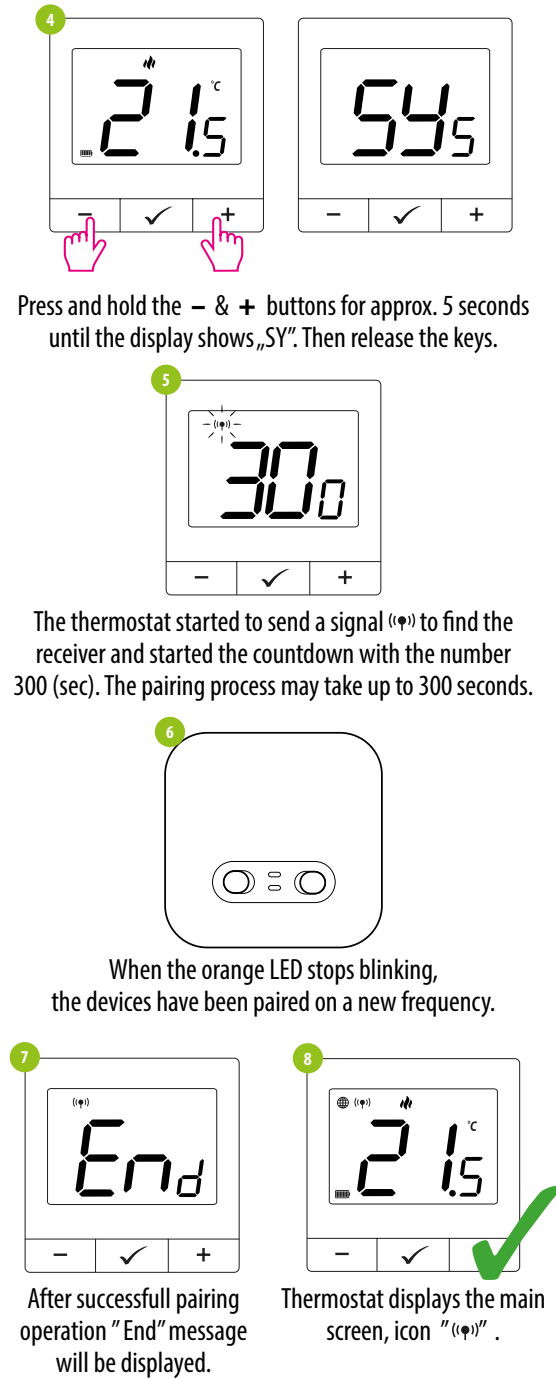
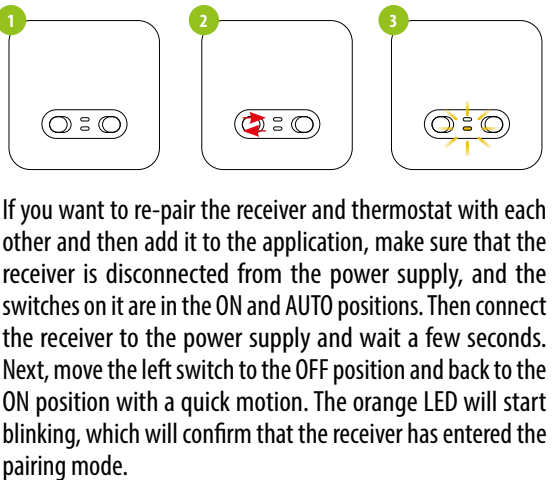
STEP 3 - CONNECT THE THERMOSTAT TO WI-FI


After installing the app and creating an account:



Pairing process with the receiver

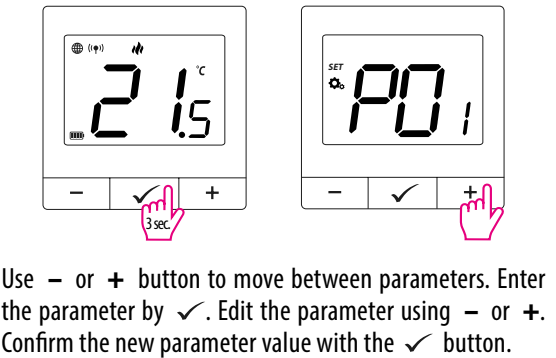
 **PLEASE NOTE!**
THERMOSTAT IS ALREADY PAIRED WITH THE RECEIVER!


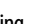



 **PLEASE NOTE!**
If the devices remain unpaired after 10 minutes (e.g. no antenna icon on the controller, the receiver does not respond to the heating signal from the controller), the pairing process must be repeated, taking into account the distances between the devices, obstacles and interference.

Installer settings

To enter installer parameters press ✓ and hold button for 3 seconds.



Installer parameters				
Pxx	Function	Value	Description	Default value
P01	Heating/Cooling Selection		Heating	
			Cooling	
P02	Control algorithm (in Cooling mode TPI algorithm is unavailable)	TPI UFH	TPI for Underfloor Heating	HIS 0.4
		TPI RAD	TPI for Radiators	
		TPI ELE	TPI for Electrical Heating	
		HIS 0.4	SPAN +/-0,2°C	
		HIS 0.8	SPAN +/-0,4°C	
		HIS 1.2	SPAN +/-0,6°C	
		HIS1.6	SPAN +/-0,8°C	
		HIS 2.0	SPAN +/-1,0°C	
P03	Offset temperature	-3.5°C to +3.5°C	If the thermostat indicates wrong temperature, you can correct it by ±3.5°C	0°C
P04	Relay type	NO	Normally Open type of relay	NO
		NC	Normally Closed type of relay	
P05	Minimum setpoint	5°C - 20°C	Minimum heating / cooling temperature that can be set	5°C
P06	Maximum setpoint	20,5°C - 35°C	Maximum heating / cooling temperature that can be set	35°C
P07	PIN Code	NO	Function disabled	NO
		PIN	Function enabled	
P08	PIN Code value	000-xxx	User PIN	000
P09	Require a PIN to unlock the keys every time (Active when P07=PIN)	NO	Function disabled	NO
		YES	Function enabled	
CLR	Restoration default value	NO	No	NO
		YES	Yes	

Factory reset

To RESET Thermostat to factory settings, hold down the - and + buttons until the FA message appears. Then release the keys. Thermostat will restart, restore default factory settings and displays the home screen. The device will be removed from the app you will need to add it again.

