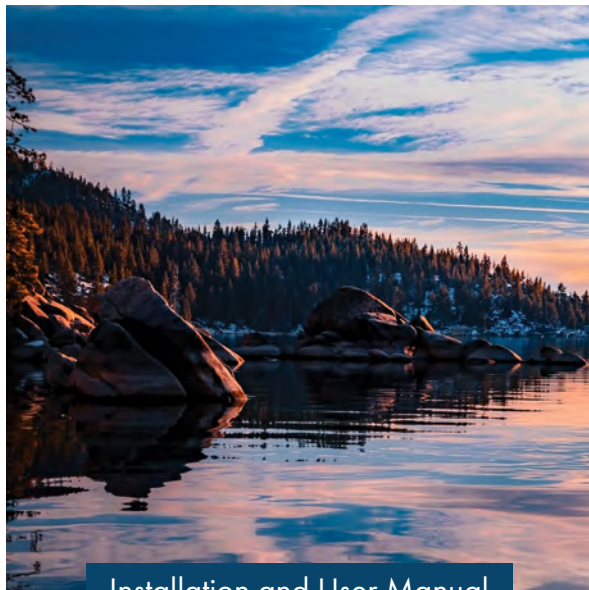


ZLINE

ATTAINABLE **LUXURY**®



Installation and User Manual

RUBICON BATH ACCESSORIES

**RBCN1-HK, RBCN1-TP,
RBCN1-TRNG, RBCN1-TR,
& RBCN1-TR18 MODELS**

zlinekitchen.com



ZLINE Kitchen and Bath provides Attainable Luxury, where the kitchen and bath of your dreams is never out of reach. Through our unique designs and unparalleled quality, we're dedicated to providing you an elevated experience in the heart of your home. With an endless selection of features and finishes, our inspiration is your reality.

ZLINE
ATTAINABLE LUXURY®



ZLINE is fueled by a passion for innovation; A relentless pursuit of bringing the highest end luxury designs and professional features into everyone's homes.

Because we continually strive to improve our products, we may change specifications and designs without prior notice.

Scan the QR code to view the most up-to-date version of the Installation Manual and User Manual.

⚠ WARNING: This product can expose you to chemicals including nickel, which is known to the State of California to cause cancer. For more information, go to www.P65Warnings.ca.gov.

TABLE OF CONTENTS

BEFORE INSTALLATION..... 1

 Parts Included 1

 Tools Needed 1

 RBCN1-HK. 2

 RBCN1-TP 3

 RBCN1-TRNG 4

 RBCN1-TR & RBCN1-TR18 5

INSTALLATION 6

 RBCN1-HK, RBCN1-TP, & RBCN1-TRNG 6

 RBCN1-TR & RBCN1-TR18 7

CARE AND MAINTENANCE..... 8

BEFORE INSTALLATION

PARTS INCLUDED

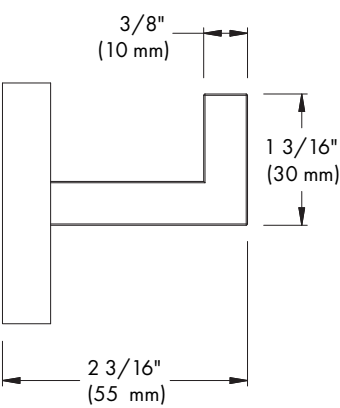
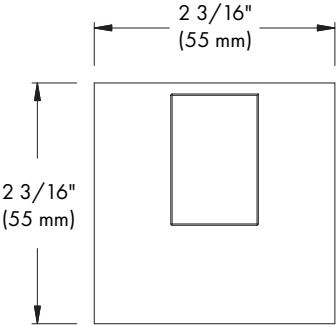
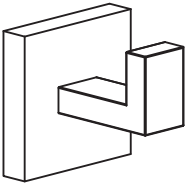
- Allen wrench
- Anchors
- Screws

TOOLS NEEDED

- Drill with 1/4" (6 mm) drill bit
- Flat head screwdriver
- Hammer
- Level
- Phillips head screwdriver
- Tape measure

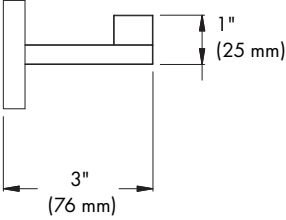
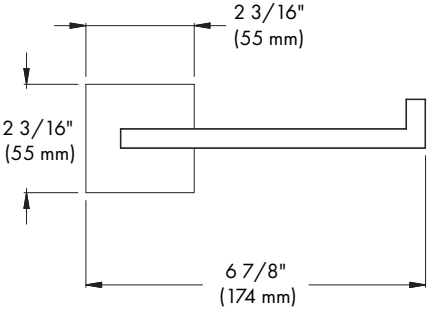
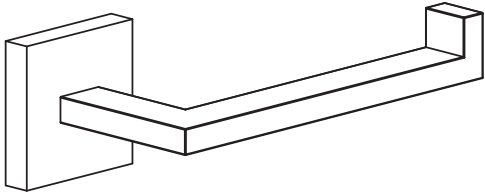
BEFORE INSTALLATION

RBCN1-HK



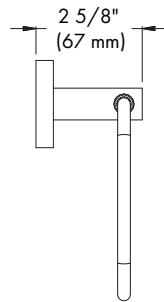
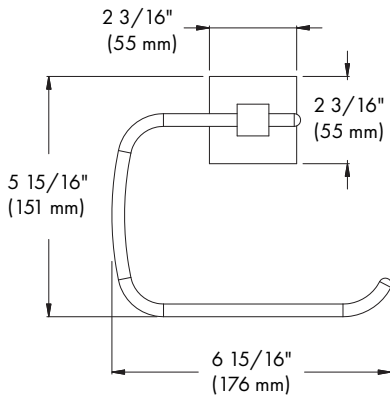
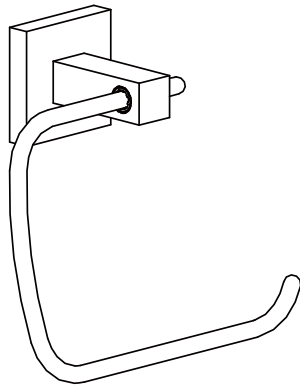
BEFORE INSTALLATION

RBCN1-TP



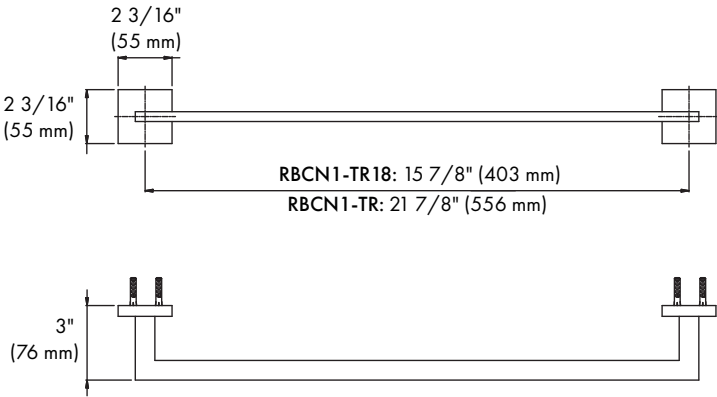
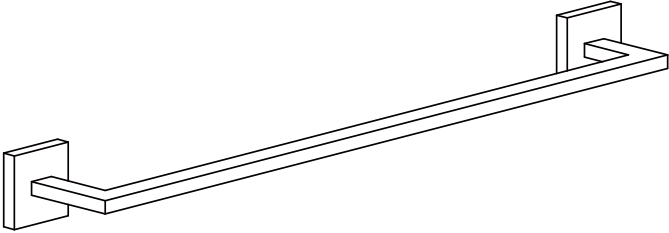
BEFORE INSTALLATION

RBCN1-TRNG



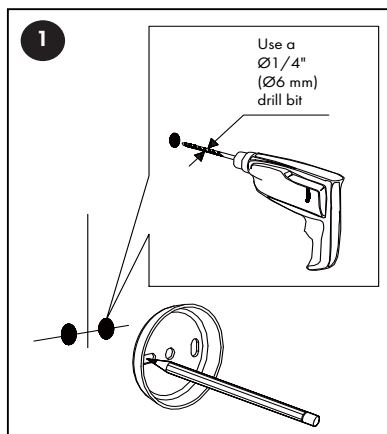
BEFORE INSTALLATION

RBCN1-TR & RBCN1-TR18

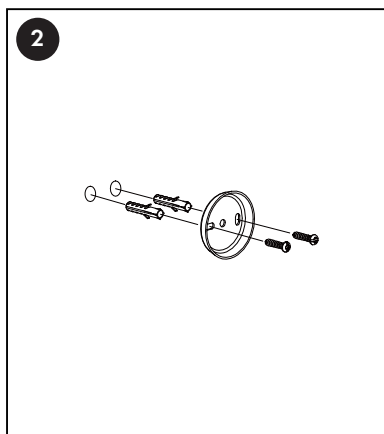


INSTALLATION

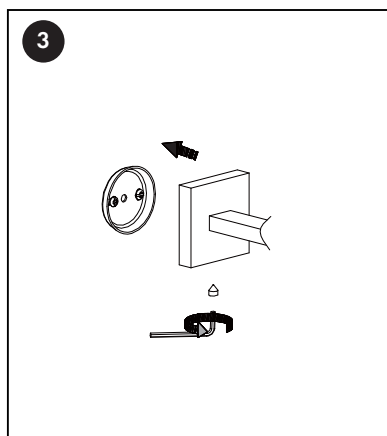
RBCN1-HK, RBCN1-TP, & RBCN1-TRNG



Mark the area where the item will be installed. Use a level to make sure that the mounting hardware is level. Drill $\varnothing 1/4"$ ($\varnothing 6$ mm) holes for the mounting hardware.



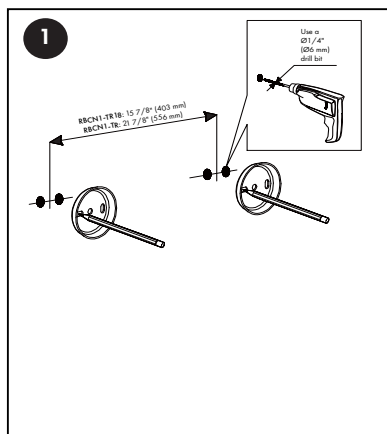
Place the anchors in the drilled holes using a hammer to gently tap them into place. Place the screws through the mounting plate and thread them into the anchors.



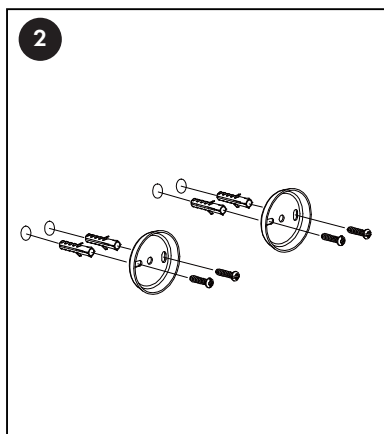
Place the item onto the mounting plate and use an Allen wrench to tighten the set screw, securing the item to the mounting plate. Ensure that the item is not upside down.

INSTALLATION

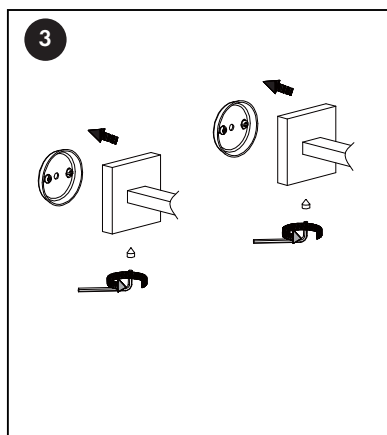
RBCN1-TR & RBCN1-TR18



Use a measuring tape and pencil to mark the area where the item will be installed. Ensure the markings are level.



Place the anchors in the drilled holes using a hammer to gently tap them into place. Place the screws through the mounting plate and thread them into the anchors.



Place the item onto the mounting plate and use an Allen wrench to tighten the set screw, securing the item to the mounting plate. Ensure that the item is not upside down.

CARE AND MAINTENANCE

To keep the product clean, follow the steps below:

- Remove any surface dirt and film using clean water and cotton cloth.
- Spray cleaner such as mild liquid detergents, clear liquid glass cleaners, non-acidic and fully dissolved powder cleaners, or non-abrasive liquid polishers onto a microfiber cloth to clean the product.
- Do not clean with soaps, acid, polish, abrasives, or harsh cleaners.
- Rinse the product with clean water to thoroughly remove cleaner and dry with a microfiber cloth.



For questions, please contact our Customer Service team at 1-614-777-5004 or visit www.zlinekitchen.com/contact to utilize our online Customer Experience Portal.



Scan the QR code to view the most up-to-date version of our Installation Manual and User Manual.



Need to purchase a part or accessory for your ZLINE product? Visit www.zlineparts.com, ZLINE's official parts distribution partner.

1.0.4

zlinekitchen.com

1-614-777-5004

contact@zlinekitchen.com

ZLINE
ATTAINABLE LUXURY®