

# VRWatch Manual



**USER MANUAL  
FCC CE**

# THANK YOU FOR PURCHASING THE VRWATCH

---

Please read this manual before operating the VRWatch and keep it handy.

Your purchase should include the following:

1 x VRWatch

1 x Manual

1 x Micro USB Cable

1 x Earphones

Contact **770-694-6921** if you are missing any of these components.

# TABLE OF CONTENTS

---

GET FAMILIAR WITH YOUR VRWATCH .....	4
CHARGING THE DEVICE .....	5
POWERING THE DEVICE ON AND SETTING THE TIME/DATE .....	6
HOW TO RECORD AUDIO.....	7
HOW TO RECORD AUDIO BASED OFF VOICE ACTIVATION.....	8
HOW TO PLAYBACK AUDIO FILES .....	9
HOW TO DELETE AUDIO FILES .....	10
HOW TO PASSWORD LOCK THE WATCH .....	11
TRANSFER AUDIO RECORDINGS TO YOUR PC.....	12
TROUBLESHOOTING .....	14
TECHNICAL SPECIFICAITONS.....	15

# GET FAMILIAR WITH YOUR VRWATCH

---

**MICRO USB PORT**



**SELECTION BUTTON**



**UP/DOWN & VOLUME BUTTONS**



**POWER BUTTON**

## CHARGING THE DEVICE

---

1. Plug the device into an AC adapter using the included Micro USB cable.
2. The front of the watch will illuminate and say 'Charging...'
3. Once done charging, the battery meter in the to right corner of the watch face will be a solid green.

## POWERING THE DEVICE ON AND SETTING THE TIME/DATE

---

1. Hold the power button on the device for 3 seconds and let go. The watch face will say 'Welcome' and then show you the clock on the main menu.
2. With the clocking being shown on the watch face, press the 'M' button on the side of the device once, and then 'M' again on 'Set time'.
3. Use the arrow buttons on the side of the watch to set the Hour. Then, hold the arrow button to move to the Minutes.
4. Once done, press the 'M' button again to save your settings.
5. Next, choose 'Set Date'.
6. Use the arrow keys to adjust the Year, and then hold the arrow button to move to the Month, and finally the Day.
7. Press 'M' to save your settings.

You can hold the 'M' key to return to the main menu from any screen.

# HOW TO RECORD AUDIO

---

1. From the main menu of the device, press the arrow keys until you see the 'Recordings' screen.
2. Hit the 'M' button on the side once.
3. Hit the 'M' button again when you have 'Start voice recording' selected. The recording will begin and the watch will return to showing the clock in ~10 seconds.
4. To pause the recording, press the power button once. To resume recording, press the power button once again.
5. To save the voice recording, press the 'M' button once more to show the recording progress, and then hold the 'M' button again to save the audio file.

To quickly begin recording an audio file without scrolling to the 'Recordings' screen, you can hold the 'M' button for 3 seconds while the clock is showing on the watch to begin an audio recording.

# HOW TO RECORD AUDIO BASED OFF VOICE ACTIVATION

---

1. From the main menu of the device, press the arrow keys until you see the 'Recordings' screen.
2. Hit the 'M' button on the side once.
3. Highlight 'AVR Set' using the arrow keys on the side of the device and then hit the 'M' button once again.
4. You can adjust the voice sensitivity levels using the arrows on the side of the device.
  - 0 would mean voice activation is OFF.
  - 1 would be the least sensitive voice activation setting.
  - 10 would be the most sensitive voice activation setting.
5. Hit the 'M' button once to save your selection.
6. When you begin a recording, the 'VOS' symbol will be shown when the recording is active, and will flash when the recording is paused due to not detecting sound.



## HOW TO PLAYBACK AUDIO FILES

---

1. Plug the earphones into your watch.
  2. From the main menu of the device, press the arrow keys until you see the 'Voice' screen.
  3. Hit the 'M' button on the side once.
  4. Highlight the file you want to hear by using the arrow keys on the side of the device and then press the 'M' button once to begin playback.
- 
- You can skip recordings by quickly pressing the up/down arrow keys on the side of the device.
  - To fast forward or backtrack in a recording, **hold** the up/down arrow keys on the side of the device.
  - You can pause/resume playback by quickly pressing the power button.
  - You can adjust playback volume by hitting the 'M' key once during playback, highlighting 'Volume control', and then pressing the 'M' key again. Set your volume using the arrow keys on the side of the watch.

## HOW TO DELETE AUDIO FILES

---

1. Plug the earphones into your watch.
2. From the main menu of the device, press the arrow keys until you see the 'Voice' screen.
3. Hit the 'M' button on the side once.
4. Choose an audio file to play and hit the 'M' key.
5. While the audio file is playing, press the 'M' key once again.
6. You can highlight 'Delete file' (deletes the file playing back) or 'Delete all' (deletes all audio files) and then confirm the selection by pressing the 'M' key again.

## HOW TO PASSWORD LOCK THE WATCH

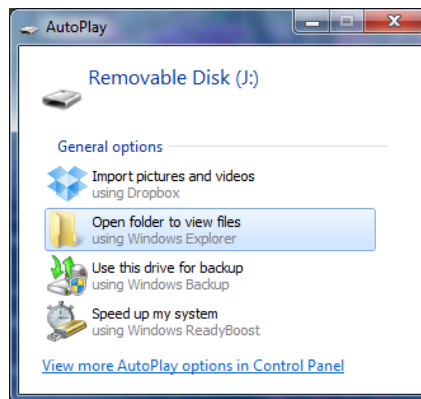
---

1. From the main menu of the device, press the arrow keys until you see the 'Set' screen.
2. Press the 'M' button once.
3. Scroll down using the arrow keys and highlight 'Password setting' and press the 'M' button once.
4. Change the password using the arrow keys.
5. Hold the arrow keys to go to the next number.
6. When you are done, press the 'M' button to save your password.
7. When the watch is powered off and back on again, you will be required to enter the password to use the watch.

# TRANSFER AUDIO RECORDINGS TO YOUR PC

---

1. Connect your device to your computer using the USB cable.
2. Locate “Removable Disk” inside the (My) Computer folder.
  - AutoPlay Removable Disk > Open folder to view files



Or...

- Go to Start > Documents > This PC > Removable Disk
3. Open the Removable Disk drive.
  4. Open the folder containing the recordings.

5. Double click to play back the file, or you can right click it and choose 'Copy', and then right click on your desktop and 'Paste' to save it to your PC.

## **TROUBLESHOOTING**

---

### **THE WATCH IS NOT RECORDING AUDIO FILES**

- Make sure the watch has enough space left.
- Make sure the watch is fully charged.

### **OTHER PROBLEMS**

- Call our technical support line at 770-694-6921

## TECHNICAL SPECIFICAITONS

---

<b>Recording Format</b>	.MP3 / .WAV
<b>Recording Quality</b>	32/64/128/192/768/1536kbps
<b>Recording Storage Time</b>	570/285/142/94/24/12 hours
<b>Battery Life</b>	Up to 20 hours
<b>Battery Type</b>	3.7v 150mAh Li-Poly
<b>Systems Supported</b>	Windows XP & Up