



# JA-115M, JA-115M-BR, JA-115M-AN, JA-115M-GR

## Bus mini magnetic detector

type: 1MAG2304LM

The product is a component of the JABLOTRON system. It is used to detect the opening of doors, windows, etc. The detector has a status reaction (it reports activation and deactivation). The detector is designed to be installed by a trained technician with a valid Jablotron certificate.

Product is compatible with JA-14K, JA-100K, JA-101K, JA-106K, JA-103K, JA-103K-7AH, JA-107K.

### Installation

Place the detector on the fixed part of the door (window) and the magnet on the moving part. The magnet can be attached to the detector from the left or the right. When mounting on a metal surface, it is recommended that the magnet be spaced away from the metal surface using the supplied plastic pads.

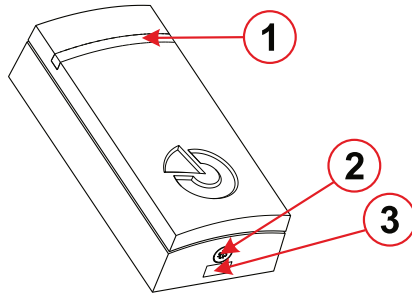


Figure 1: Description of external part of the detector  
1 – LED light guide; 2 – locking screw; 3 – cover latch

1. Open the detector cover by pressing the latch (3).
2. Thread the cable through the prepared hole through the housing part and screw the housing part to the selected location on the door or window frame.



**Always connect the bus when the system power is completely off.**

3. Connect the bus cable to the terminals (6).

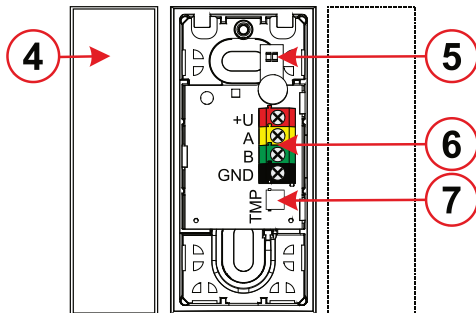


Figure 2: Description of internal parts of the detector: 4 – permanent magnet; 5 – LED indicators; 6 – bus terminals; 7 – tamper

4. Replace the detector cover, snap into the cover latch (3) and secure with the supplied locking screw (2).
5. Screw the permanent magnet (4) onto the moving part of the window or door.

### Enrolment to the system and settings

Depending on the type of control panel, use the recommended software or application, see the control panel manual.

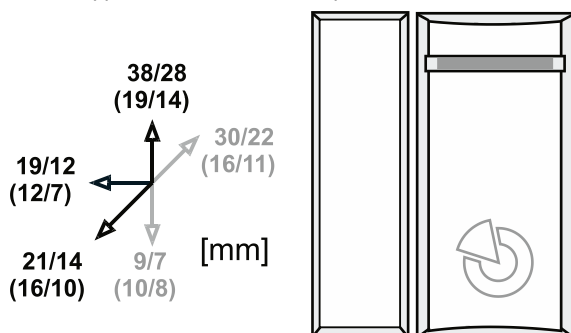
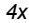


Figure 3: Orientation detection distance – activation / deactivation on a non-magnetic (magnetic) surface

### Technical specification

Power	from control panel bus 12 V DC (8–15 V)
Quiescent current consumption	4 mA
Maximal current consumption	15 mA
Dimensions of detector	28 x 58 x 17 mm
Dimensions of magnet	28 x 17 x 17 mm
Weigh of detector	14 g
Weight of magnet	16 g
Classification	security grade 2 / environmental class II (according to EN 50131-1)
Environment	indoor general
Operating temperature range	-10 °C to +40 °C
Average operating humidity	75% RH, non-condensing
Certification body	Trezor Test (no. 3025)
In compliance with	EN IEC 63000, EN 50130-4, EN 55032, EN 50131-1, -2-6
Recommended screw	4x  ø 3 mm (half-rounded head)



JABLOTRON a.s. declares that the product 1MAG2304LM is designed and manufactured in compliance with the harmonisation legislation of the European Union: directives no.: 2014/30/EU, 2011/65/EU, when used as intended. The original Declaration of Conformity is available at [www.jablotron.com](http://www.jablotron.com) in the Downloads section.

**Note:** Disposing of this product correctly will help save valuable resources and prevent any potential negative effects on human health and the environment, which could otherwise arise from inappropriate waste handling. Please return the product to the dealer or contact your local authority for further details of your nearest designated collection point.