

## Product Introduction

It is a kind of high-performance intelligent multiple frequency scanning display, which adopts active matrix thin film transistor LED-backlit LCD. The display is controlled through the microcomputer MCU digital technology. It is compact and lightweight, which is suitable for narrow working spaces.

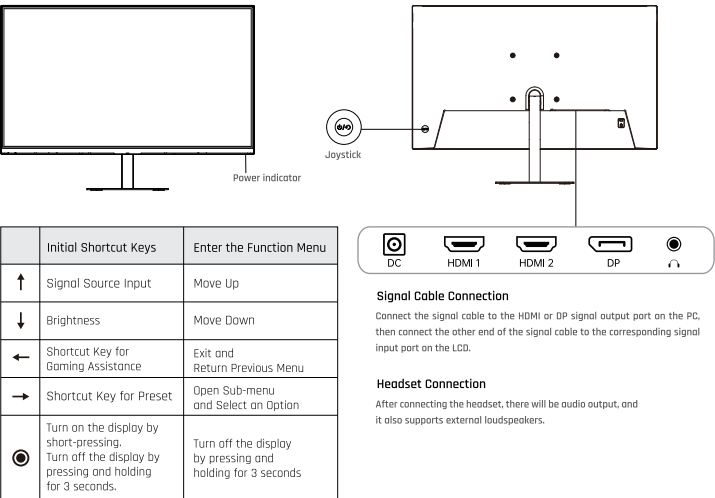
Before installation, please check whether the following articles are complete in the packing box:

- LCD×1
- Power Adapter×1
- Screwdriver×1
- Signal Cable×1
- Warranty Card×1
- User Guide×1
- Base

If any of above product is missing, please contact with product distributor immediately.

Notice: Specific accessories in order to prevail in kind. Please keep packing materials for future movement.

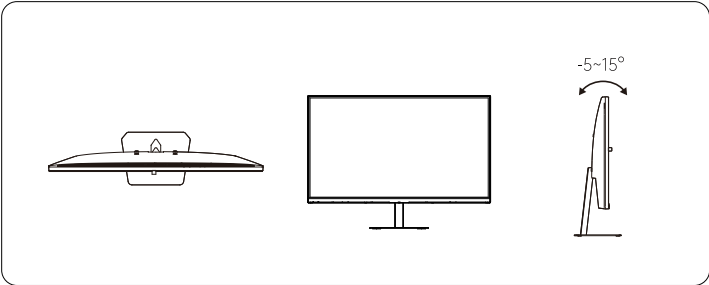
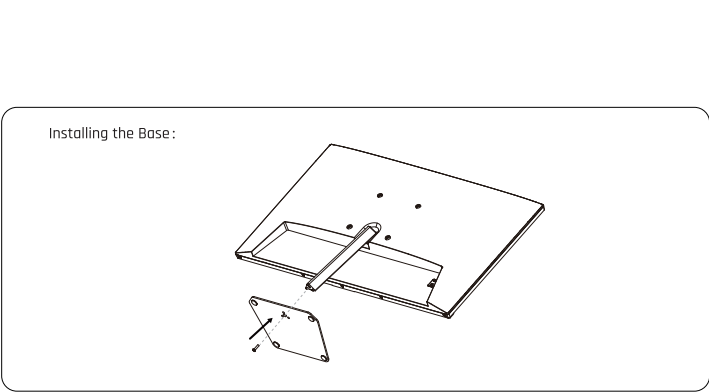
## Keys And Interfaces



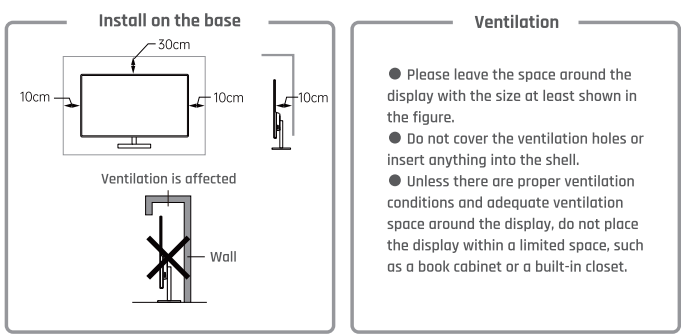
### Power Indicator

The constant indicator means that the display is in normal operation; the flash indicator represents no signal state. Under the energy conservation state, the display will normally work if the signal is provided again. The display is still powered on in the standby state. Thus, unplug the power cord when you do not use the display for safety.

## About the base



## Mounting Location



### Installation Guide

- The display should be installed near an AC power socket that can be easily pluggable.
- It is recommended to use suitable base for safety purpose.
- To prevent injury, the display should be placed on a smooth horizontal plane.
- Do not place the display where it may be suffered from mechanical vibration.
- Do not place the display where insects may enter.
- Do not place the display directly facing an air conditioner, or the internal panel may condense, leading to faults.
- Do not place the display where there is a strong electromagnetic field, or it will be interfered with and damaged by the electromagnetic waves.

## Safety Protection

When the PC video signal exceeds the frequency range of the display, the display will disable the line and field synchronizing signals to protect the display. Under this circumstance, you must set the output frequency of the PC to an acceptable range for the display to work properly.

## Power Management System

Mode	Power Consumption
Normal Operation	≈36W
Standby	≈0.5W

Remark: All technical specifications in the User Guide and on the external packing are allowed to change without prior notice. If there is a subtle difference between the User Guide and the actual operation, the latter shall prevail.

## Product Technical Specifications

Panel Dimension	23.8"	<div>Working Environment Requirements</div> <div>Maximum altitude</div> <div>Atmospheric pressure</div> <div>Operating temperature and humidity</div> <div>Storage temperature and humidity</div>	5000m
Best Operating Resolution Ratio	1920×1080 @ 180Hz		86kpa ~106kpa
Input Voltage	DC 12V / 3A		0℃ ~ 40℃ -30% ~ 90% <small>(Non-condensing)</small>
Contrast	1000:1 (TYP)		-20℃ ~ 55℃ 20% ~ 93% <small>(Non-condensing)</small>
Visible Area	527.04mm×296.46mm		
Pitch size for wall mount	100mm×100mm		

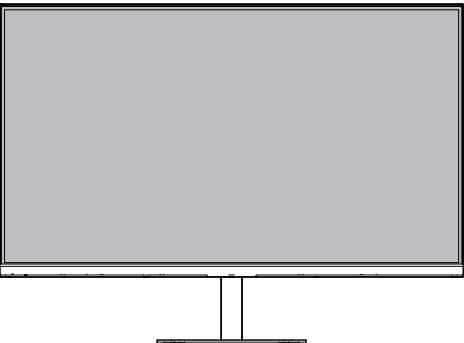
## Simple Problems Disposal

Symptoms	Disposal Methods
1.Blank screen /Power indicator does not work	Check whether the power supply is in good contact with the display and the power socket; and check whether the display is turned off.
2.Blurred, too large or too small images	Go to the "Image Settings" category menu and select "Image Auto Adjust" to make the monitor adjust automatically to correct. (Only available for monitors with VGA)
3.Dark screen	Enter the "Brightness & Contrast" menu to regulate the contrast and the brightness of the display.
4.Display overheating	Leave at least 10cm of ventilated space around the display. Do not place articles on the display.
5.Dark/light spots when powered on	It is normal. Because of the temperature difference in the environment, the backlit tube emits uneven light at the initial stage after the display turns on. However, the backlit tube will emit normal light after 20 minutes, and the dark/light spots will be eliminated at that time.
6.Image distortion, flashing, shaking	Check your computer configuration, choose the correct resolution, and reset your refresh rate.
7.Noisy signal when powered off	During the power-off of the display, there may be some noisy signals on the screen caused by the normal discharge.



# LCD Monitor

KTC H24F8  
Display User Guide



Please read the User Guide carefully and keep it properly.The pictures involved in the User Guide are for reference only, please refer to the actual product for details.

V1.0

## Indicative Description of The Regulations for the Administration of the Recovery and Disposal of Waste Electrical and Electronic Products

To care for and protect the earth better, please send it to a local manufacturer with nationally recognized qualification for recycling according to the national applicable laws and regulations on recycling of waste electrical and electronic products when you no longer need this product or at the end of its service life.



More Information

Please scan QR code or visit EN.KTCPLAY.COM

Any question or comments. Please contact:

support@ktcplay.com

support.eu@ktcplay.com

HDMI™

The terms HDMI and HDMI High-Definition Multimedia Interface,and the HDMI Logo are trademarks or registered trademarks of HDMI Licensing Adminstrator,Inc. in the United States and other countries.

