

AC2A

Portable Power Station^{V1.0}

BLUETTI App User Manual



Thank You

Thank you for making BLUETTI a part of your family.

From the very beginning, BLUETTI has tried to stay true to a sustainable future through green energy storage solutions while delivering an exceptional eco-friendly experience for our homes and our world.

That's why BLUETTI makes its presence in 100+ countries and is trusted by millions of customers across the globe.



Copyright © 2023 Shenzhen PowerOak Newener Co., Ltd. All rights reserved.

No part of this document may be reproduced or transmitted in any form or by any means without the prior written consent of Shenzhen PowerOak Newener Co., Ltd.

Notice

BLUETTI's products, services, and features are subject to the agreed-upon terms and conditions during purchase. Please note that some products, services, or features described in this manual may not be available under your purchase contract. Unless otherwise specified in the contract, BLUETTI makes no representations or warranties of any kind, express or implied, with respect to the contents of this manual.

The contents of this manual are subject to change without notice. Please get the latest version from: <https://www.bluettipower.com/pages/user-guides>

If you have any questions or concerns about this manual, please contact BLUETTI support for further assistance.

Shenzhen PowerOak Newener Co., Ltd.

F19, BLD No.1, Kaidaer, Tongsha RD No.168, Xili street, Nanshan, Shenzhen, China

Web: <https://www.bluettipower.com>

Contents

1.Introduction	01
2.Real-time Monitoring	01
2.1 Operation Status	01
2.2 Charging / Discharging Status	02
3. Device Management	02
3.1 Basic Settings	03
3.2 ECO Mode	04
3.3 Advanced Settings	05
4. Practices	05
4.1 Device Control in Offline Mode	05
4.2 Device Sharing	05
4.3 Firmware Upgrade	06

1.Introduction

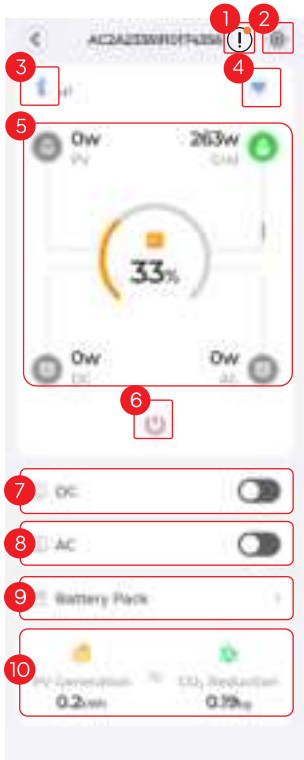
To effectively keep track of and control your AC2A portable power station, begin by downloading and installing the user-friendly BLUETTI App. Once installed, connect the App to your device. For step-by-step instructions on how to register, log in, and connect your device, simply refer to the BLUETTI App User Manual. This manual is designed to help you easily monitor, manage, and perform various operations for your AC2A.

2.Real-time Monitoring

The App provides you with important details like the current battery level, charging and discharging status, output frequency, and other key metrics, allowing you to monitor and track the performance of your device effectively. Additionally, in case of any malfunctions or alarms, you can view real-time alerts so that you can take immediate action to deal with any issues in a timely manner.

2.1 Operation Status

After connecting the App to your AC2A, you can check its basic operation status, including charging / discharging status, battery pack, and more.



- ① Tap to check the current alarm(s) and alarm history.
- ② Tap to check and change system settings, like Firmware Upgrade, Advanced Settings, Charging Mode, etc.
- ③ Bluetooth connection successful.
- ④ Charging in Turbo / Silent / Standard Mode.
- ⑤ Charging / Discharging Status
Please refer to Charging / Discharging Status for details.
- ⑥ Tap to power off the AC2A.
Note: The AC2A can only be powered on with the power button on the AC2A unit.
- ⑦ DC Power Button
Tap to turn on the DC output and power compatible devices.
DC will be displayed in the lower right corner of the screen when it's enabled.

⑧ AC Power Button

Tap to turn on the AC output and power compatible devices. AC will be displayed in the lower right corner of the screen when it's enabled.

⑨ Battery Pack

Tap to check the information of the battery pack. Please refer to Battery Pack Status for details.

⑩ PV Generation & CO₂ Reduction

Reduced carbon emission (kg) = Solar power generation (kWh) × Carbon emission factor
The carbon emission factor can be configured on the Setting page.

2.2 Charging / Discharging Status

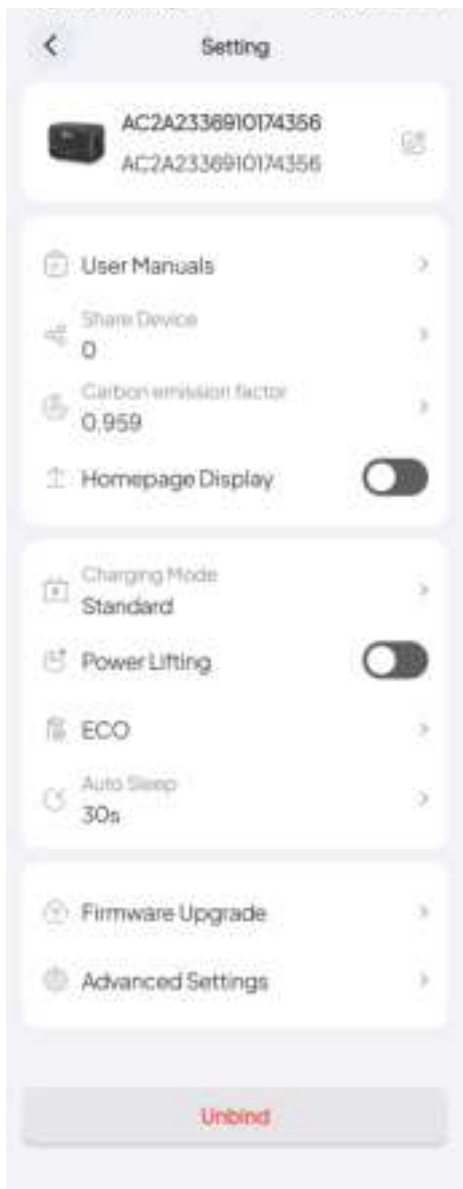
It shows how the AC2A is charging and discharging. The animation gives you a simple way to understand how energy is flowing.





- PV generation. It shows how much power the AC2A is drawing from your rooftop solar or solar panel(s). Tap to view more details.
- Grid charging. It shows how much power the AC2A is drawing from the grid. Tap to view more details.
- SoC (State of Charge). It indicates the remaining battery level.
- DC load consumption. It shows how much DC power is supplying to your household appliance.
- AC load consumption. It shows how much AC power is supplying to your household appliance. Tap to learn more about where the power is going.

3.Device Management

After connecting the device, on the operation status page, tap to access the Setting page. You can optimize your power usage by customizing various settings, including the Device Sharing, Charging Mode, Firmware Upgrade, and other relevant configuration.



3.1 Basic Settings

- **Device Name:** Tap  to modify.
- **User Manuals:** Tap to view the product documentation.
- **Share Device:** Tap to share your AC2A.
- **Carbon emission factor:** To calculate your reduced carbon emission.
- **Note:** Reduced carbon emission (kg) = Solar power generation (kWh) × Carbon emission factor
- **Charging Mode:** The AC2A supports three AC charging modes:
 - Turbo Charging: 0%-80% charge in 45 minutes. Ideal for quick charging.
 - Standard Charging: fully charged in about 2 hours. Reduces battery wear and tear for long battery life.
 - Silent Charging: low operation noise (<40dB). Offers a quiet, low-power operation.
- **Note:** The AC2A is set to charge in Standard mode by default.
- **Power Lifting Mode:** To handle resistive loads up to 600W. The  icon will be displayed on the screen during startup.
 - Note:** This mode is only suitable for resistive loads with a power rating between 300W-600W.
- **ECO:** Please refer to the ECO Mode for details.
- **Auto Sleep:** Choose screen sleep time (30s, 1min, 5min, Never on). The default screen sleep time is 1 minute.

Firmware Upgrade: Tap to upgrade your device.

Note: For a stable connection, keep your phone and AC2A close together (recommended range: 5m).

Advanced Settings: To check and change more settings.

Unbind: Tap to unbind your BLUETTI account with the AC2A.

3.2 ECO Mode

To save power and maximize battery life, enable ECO Mode in the **Setting** page. It is enabled by default.

AC-ECO

In this mode, if the AC power output falls below a certain power level for a set period of time, the AC power will automatically turn off. To resume the AC output, turn on the AC Power Button.

Note: By default, the AC-ECO mode is set to automatically shut down after 4 hours with a power limit of 10W.



DC-ECO

In this mode, if the DC power output falls below a certain power level for a set period of time, the DC power will automatically turn off. To resume the DC output, turn on the DC Power Button.

Note: By default, the DC-ECO mode is set to automatically shut down after 4 hours with a power limit of 5W.



Note:

By default, both the AC-ECO and DC-ECO modes are enabled.

When the AC-ECO or DC-ECO is enabled, ECO will be displayed in the upper right corner of the screen.

3.3 Advanced Settings

Tap **Advanced Settings** at the bottom of the **Setting** page to check and change more settings, including AC Output Frequency, Grid Self-adaption Mode, and Factory Reset.

- **AC Output Frequency:** Choose 60Hz or 50Hz for the AC2A.
- **Grid Self-adaption:** When encountering unstable grid voltage, enable this mode to ensure a stable and safe grid charging experience for both the AC2A and your devices.
- **Factory Reset:** To factory reset all the settings.



4.Practices


4.1 Device Control in Offline Mode

If you haven't registered your AC2A yet, open the App and tap **OFFLINE MODE** to connect directly. Select it (name starts with AC2A) from the **Available Devices** list on the **Offline Mode** page.

Note: If you can't find your AC2A, get closer and **Click to refresh** the list.

If you've already logged in, tap **Bluetooth** on the **Home** page. Select your AC2A from the **Available Devices** list on the **Bluetooth** page. After a successful connection, you can check and change the settings by consulting the **Device Management** pages.

4.2 Device Sharing

1. Bind and connect the device.
2. Tap  in the upper right corner of the operation status page.
3. Tap **Share Device**, and the App will jump to the **BLUETTI Share** page.
4. Tap **Yes** to generate a QR code.

Note: The generated QR code will be valid for 10 minutes. You can share the AC2A with up to 5 accounts at the same time.

4.3 Firmware Upgrade

Note:

- For a stable connection, keep your phone and AC2A close together (recommended range: 5m).
- During the upgrade, you cannot perform charging, discharging, or any other operations.
- The upgrade steps are the same for ARM and DSP. Here's the process using ARM as an example.

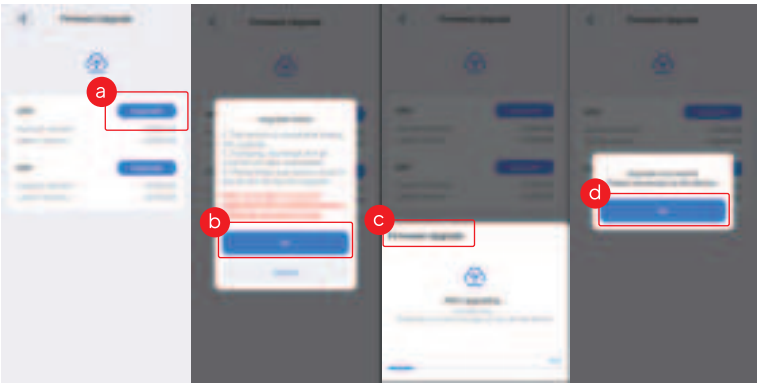
- 1.Log in to the App, and connect the device via Bluetooth.
2. Tap  in the upper right corner of the operation status page.
3. Tap **Firmware Upgrade** on the Setting page.
4. The App will jump to the **Firmware Upgrade** page.



- 5.Select the ARM or DSP upgrade option.
 - a.On the **Firmware Upgrade** page, tap **Upgrade** on the right side of the ARM.
 - b.Tap **Ok** in the **Upgrade Notes**.
 - c.The upgrade process begins, and the progress bar indicates the status.

Note: Do not exit the App until done.

- d.Once the upgrade is completed, tap **OK** in the pop-up.





Just Power On