

Hello

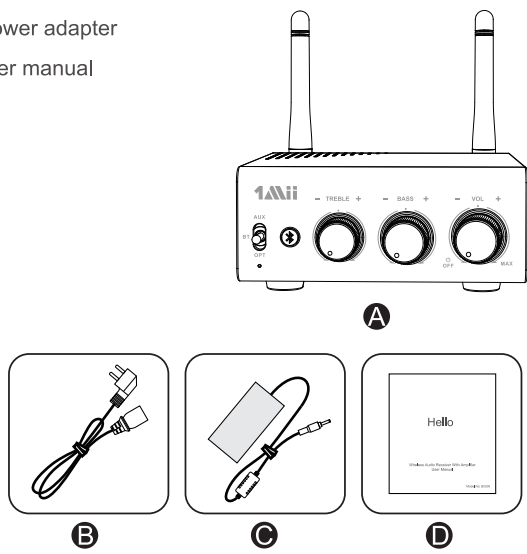


Wireless Audio Receiver With Amplifier
User Manual

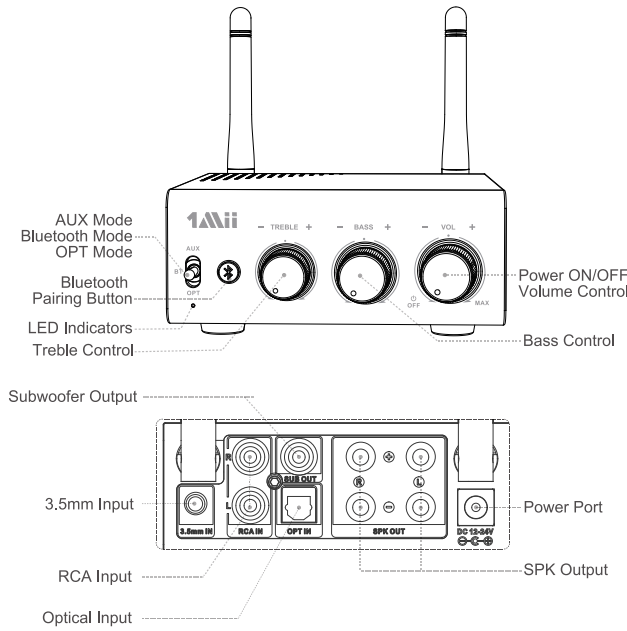
Model: B0308

2. Package contents

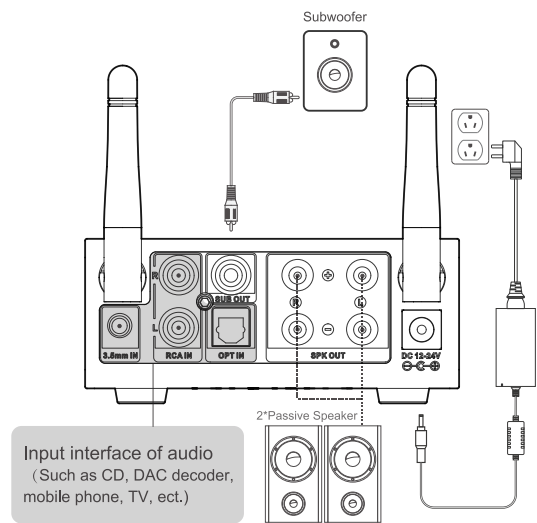
- A. Wireless Audio Receiver
B. AC Power cable
C. Power adapter
D. User manual



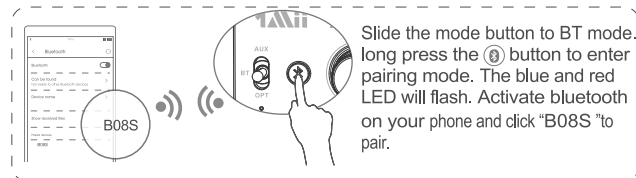
3. Product overview & control function



4. Installation diagram

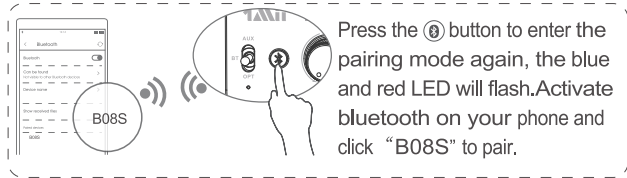


- 1) Connect your speaker to B08S Audio Out port with the audio cable.
- 2) Connect B08S to a power source.
 1. Plug the power cord into the "DC in" port .
 2. Plug the Power supply into an AC(mains) power outlet.
- 3) Turn the volume knob to the right to Power on, slide the mode button to BT mode.(if you want use wired audio source,choose the AUX or OPT accordingly)
- 4) Pairing - Pair B08S with your bluetooth-enabled phone/PC/ tablet.
 - Set B08S into the pairing mode, the LED flashes Blue / Red alternately fast.
 - First-time use: B08S will auto enter the pairing mode (with clear memory).
 - Afterward: Long press the ⑩ button to enter the pairing mode. (The LED flashes Blue / Red alternately fast)
 - Activate bluetooth on your phone or another device and click "B08S" to connect.
 - Wait and connected (For quick pairing, better keep them within 1 meter when pairing).
- 5) Enjoy your music.



5. Pair and connect two devices simultaneously

- 1) Pair with the first device by following the previous instructions in the "Installation diagram" section.
- 2) Pair with the second device.
 - Long press ⑩ button to enter the pairing mode again, the LED will flash Blue and Red.
 - Activate bluetooth on the second device and click "B08S" to pair.



Note: You can only play music on one device at a time, you need to pause the music on your device first to play music on the other one.

6. Restore factory default settings

You may need to reset B08S if it is not working as expected. When B08S is reset to factory default settings, all the paired device information will be cleared.

- Hold the ⑩ button together 10s until the LED flashes Blue and Red.

Frequently Asked Questions:

- Q : All cables are connected, but no sound out put?
A : 1. Check if the POWER indicator is on, and turn on the POWER if it is not on. When the indicator light is still not on after turn on the power, you can find a laptop power and connect to test whether it is the machine fault or a power failure.
2. If the indicator or light is on, check whether the VOL knob is in the minimum position.
If so, turn clockwise to normal Volume
3. If both of the above are normal, check the input device if it is paused, mute, or the volume is minimized.
Q : Why do loudspeakers make a lot of electric noise?
A : if you are not using the original factory standard power supply, please repla the power supply before testing. Many power supply in the market have large interference coefficient, which will cause a lot of current sound.
Q : Why connect signal line, not play music have interferential sound
A : If you use unshielded siBnal lines, there will be interference signals enter the power amplifier. If you hate the sound, you are e advised to use the shielded sign lines or unplug the signal lines.

1. Product specifications

- B08S is a Bluetooth receiver with power amplifier function, and also supports Aux analog, optical wired audio input. B08S use the high-end, Qualcomm chip Support aptX-HD function, it can drive 100W * 2 passive speakers and 1 active subwoofer, you can enjoy high-quality music while experiencing the convenience of wireless.
- Supports profiles: A2DP, AVRCP
 - Audio codec: aptX, aptX-HD, SBC
 - Operational range: Indoors: up to 50-70ft (without obstacles)
Outdoors: up to 197ft (without obstacles)
 - Input voltage/ current: DC24V 4A
 - Operating temperature: -10°C ~ 45°C
 - Storage temperature: -20°C ~ 60°C
 - Support sampling rate in optical mode: ≤ 48KHz
 - Product size: 136 × 101 × 45 mm
 - Product weight: 230g

Warnings

Warranty service is limited to normal use. Any man-made damages such as from connecting to an unsuitable power source, using an unsuitable device, or not following the instructions, as well as damages that did not occur during shipping, repairs and adjustments not approved by the company, damages from misuse, inattention, or improper installation may cause the warranty to be ineffective immediately. This warranty does not include shipping fees.

Disposal



Always dispose of the used appliance at a recycling centre. Do not dispose the used appliance together with household waste.



<https://1mii.com/download-2/>
Scan the code to get more language instructions.
扫描二维码以获取更多语言使用说明书。
Scannen Sie den Code, um weitere Sprachanweisungen zu erhalten.
Scannee el código para obtener más instrucciones de idioma.
Scannez le code pour obtenir plus d'instructions linguistiques.
コードをスキャンして、より多くの言語の説明を取得します。



Any questions? Contact:

support@1mii.com
(Response Time:4-24h,excl. holidays)

MANUFACTURER
ShenZhen 1Mii Technologies Limited.
Address: 4th Fl, Bldg B, Runfeng Industrial Park, No. 4197 Baoan Blvd.,
Gushu Community, Xixiang St., Baoan Dist., Shenzhen, China.

FCC ID: 2AUFR-RT908



www.1mii.com

MADE IN CHINA