



Bluetooth APP instructions

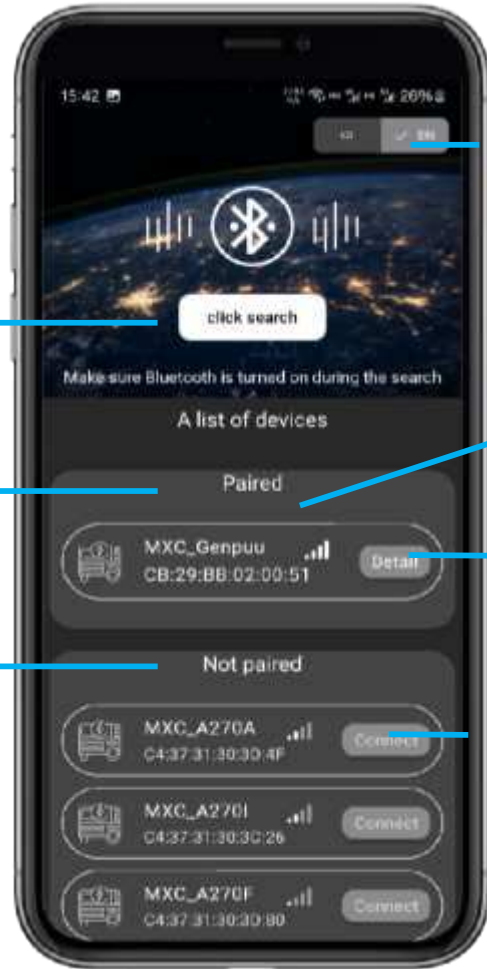
1. APP Homepage

Enter the app for automatic search. If no device is found, you can manually click search

Device Search

Paired devices

Found but not paired device



Chinese / English switching button

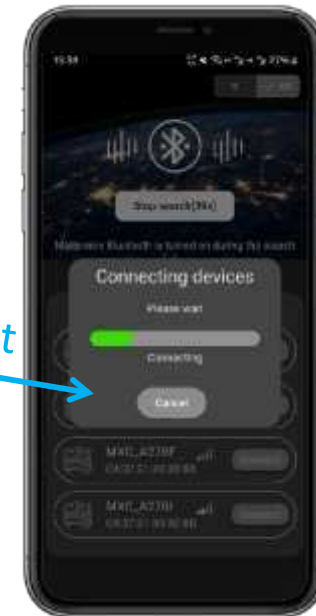
Enter the device details page

Connecting new devices

Swipe left to display options for disconnecting and deleting devices



Connection progress prompt



2. Device details interface

Return to homepage

Remaining fuel level

When the fuel is petrol, the fuel level will be detected and data displayed

The screenshot shows the 'Device details' screen. At the top, there's a back arrow and a 'success' status. Below is a 'Tap the switch button to control the device' section with a power button icon and 'Running' status. A fuel gauge on the left shows 80.0. A fuel type icon (GAS) is on the right. Below this is a 'More parameters' section with a table of equipment data.

More parameters	
Voltage	Power
0.00	0.00
Frequency	Cumulative run time
0.00Hz	0.02H
Rotate speed	Single run time
0r/min	0.03H
Generator	
0.00A	

Device connection status

Fuel type

Swipe left and right to switch information

Equipment parameters

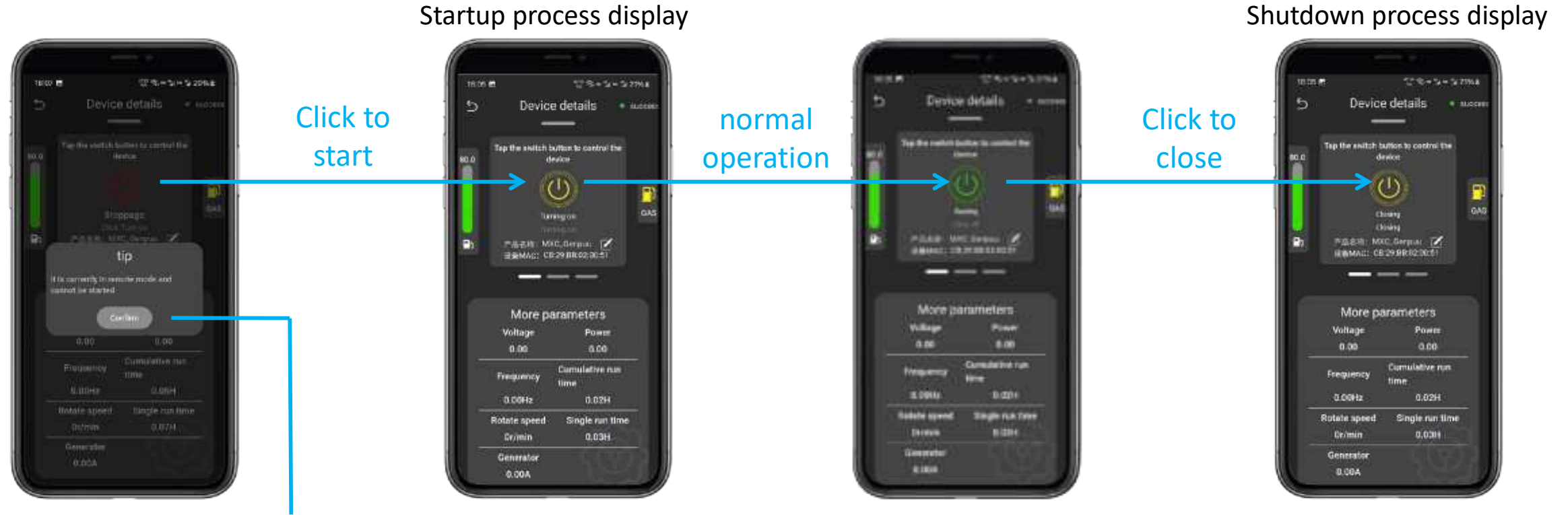
This screenshot shows the 'Device details' screen after a swipe. It displays 'Fault alarm information' with a message 'No fault alarm information' and a gear icon at the bottom.

Device information

The product name can be modified

The 'Modify the name' screen shows a text input field containing 'MXC_Genpuu' and a 'Confirm' button. A tip message is displayed at the top: 'Tips: Please enter 1-12 uppercase letters, numbers or symbols to make sure that the device is in a shutdown state, otherwise the modification will fail, and the device will automatically restart after the modification is successful'.

3. Equipment control operation



Alarm prompt

After an alarm occurs, follow the prompts to troubleshoot the problem.

4. Equipment maintenance information



Expected durability
of components and
next replacement
time



After replacing the components,
click the button and confirm in
the pop-up window to manually
reset the maintenance time.