



RGBlink®

mini max

Elevating Content Creation to 4K Excellence



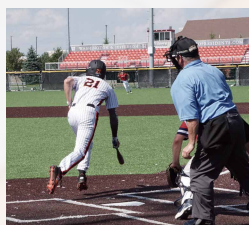
The mini-max 4K All-in-One Video Switcher builds on the legacy of the mini-series with powerful 4K performance. It enhances the mini-edge design by adding two 12G-SDI inputs—all in a compact unit that supports 4K output, recording, and streaming simultaneously. A responsive 5.5-inch touchscreen provides multi-view monitoring and menu access, while physical buttons offer tactile control for flexible operation.

With four HDMI 2.0 and two 12G-SDI inputs, together with support for UVC and NDI® sources, the mini-max connects effortlessly to a broad range of devices. Dual HDMI outputs support multi-view or test patterns, and the USB 3.0 port doubles as a UVC webcam for streaming. With support for TAO Cloud and a Web App, it also enables remote control and multi-platform broadcasting.

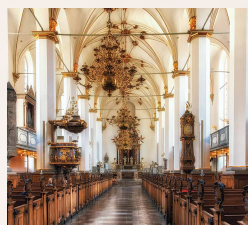
Despite its compact form, the mini-max doesn't compromise on professional functionality. It includes dynamic output control, audio noise reduction, and PTZ camera control—making it a powerful solution for both live production and remote workflows.



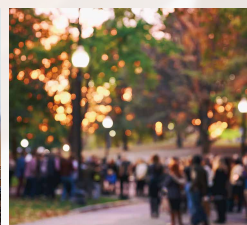
Education



Sport



Worship



Event



Conference



Multiple video input interfaces

The mini-max features five video inputs, compatible with a variety of professional sources such as cameras and laptops. IN1~IN4 can be selected from four HDMI ports, two 12G-SDI ports, and IN5 supports NDI®, IP, and UVC).

Notably, the mini-max supports streaming directly via Ethernet or functioning as a webcam over the USB-C port, allowing easy integration with third-party software like OBS for capture and broadcasting. These versatile connectivity options make the mini-max compatible with a wide range of devices, meeting the demands of various live streaming and broadcasting scenarios.

CH 1



HDMI 1



HDMI 2

CH 2



HDMI 3



HDMI 4

CH 3



12G-SDI 1

CH 4



12G-SDI 2

CH 5



NDI/ IP



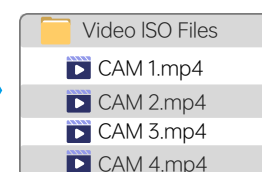
UVC/MP(media player)

Multi-channel synchronous recording

It can realize up to 4 channels of 2K inputs recording and pure screen of all inputs obtained. Will be saved for easy editing

Support 4 channels 2K60 recording/2 channels 4K30 recording/1 channels 4K60 recording

*Implemented after subsequent upgrades



key feature



4 HDMI Inputs/ 2 HDMI Outputs

Up to 4K60 inputs and 4K60 output



2 12G-SDI Inputs

Up to 2*4K60 with Built-in Scaler



2 USB-C

4K Record/4K Capture



NDI | HX3

Compatible HX HX2, up to 4K
Capture&stream



5.5 Inch Display

touch screen display



Real 4K Streaming

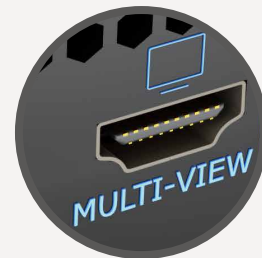
RTMP (Publish)/RTMPS

Preview on Demand

Preview and configure interactively from the touch screen display, selecting live and insert video sources. Monitor on a HDMI display with a dedicated PVW multi-view output provided.



Configurable 4K60 HDMI Output for
live presentations

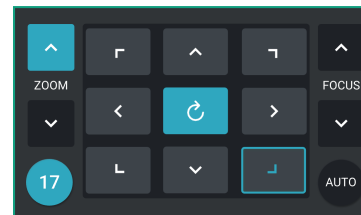


2K HDMI MULTI-VIEW –
configure for multi-view

Take Full Control

Integrated PTZ Camera Control

Forget about having multiple separate control panels for video and camera control. mini-max brings it all together, supporting industry standard VISCA or NDI protocol for PTZ control directly from the mixer. Control up to four separate cameras with pan, tilt, zoom and focus.



Precise Fingertip Control

Integrated joystick provides tactile control for each PTZ camera. Together with the toggle on the front panel, they can control the pan, tilt, zoom and focus of the PTZ camera. Joystick and toggle are additionally dynamically assigned to settings including scale, position and crop for enhanced usability when a layer being controlled.



Professional broadcast 12G-SDI input

Longer transmission distance and more professional broadcast SDI camera input.

*12G-SDI supports up to 60 meters, RGBlink laboratory test data.

Pro Color Rendering and Layers

One-Click Chroma Key

Enable presenters to be in virtual studios and environments with Chroma Key.

Select from standard key colours and enable Chroma Key directly on mini-max without the need for an app. Refine colour selection and tolerances from the touch screen to optimise.

* The device supports keying green and blue colors and the web-side supports keying colors in total.



Pro Level Audio

Capture Every Sound

With two separate insert audio ports, mini-max has got external balanced mic and line level audio covered. All two ports accept TRS 1/4in jacks, with MIC supporting direct XLR connection too. What's more there is 48V phantom power directly from mini-max available too on MIC, negating the need for a separate DI, and instantly making studio mics native connections as they should be.



Follow the Action & Always be In Sync

Set AFV for any HDMI embedded audio so the audio switches with the video source to PVW and PGM automatically.

Configure audio delay for MIC inputs or a camera input to keep audio in sync with the video.



Monitor & Set Live

The professional audio console with dynamic button operation is both eye-catching and convenient. It provides precise control, allowing for easy volume adjustment and enabling one - key mute and monitoring, which brings the user an excellent live-streaming experience.

✂ Bluetooth audio input supports.



Pro Level Video

Sophisticated Multi-Layer Presentation

Assemble visuals with multiple layers of video and graphics. mini-max offers 2 full video layers plus background image, two graphic overlays from the media pool as well.



Dynamically Scalable

Each of the two assignable video layers maybe scaled, positioned and cropped with these placed over the background.

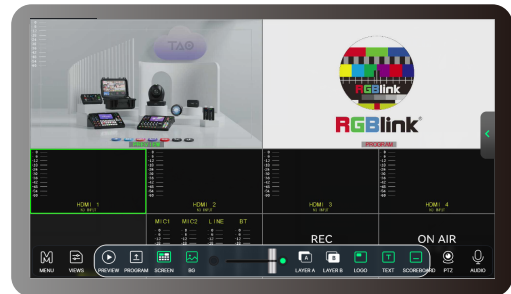
Multiple Layer Sophistication

Besides dual video sources, also add media pool graphic overlays for lower -thirds and branding logos, and switch seamlessly between graphic elements.



Intuitively Interactive Operation

Select any source or preset with control panel thumbnails and iconography that makes mini-max a natural and intuitive way to present and stream.



Transition Like a Pro

mini-max includes multiple DVE transition effects from preset to program, adding sophistication and effect.

Leverage the Power of Presets

mini-max supports saving and quick recall of 16 preset scenes, including graphics, audio, and even the parameters of the PTZ position and focus enabling smooth transitions between scenes.



Go Remote

mini-max web app companion apps for laptop and mobile allow remote use from the mini-max and the video connections.

Fully integrated with the RGBlink TAO cloud control streams remote too with TAO cloud.

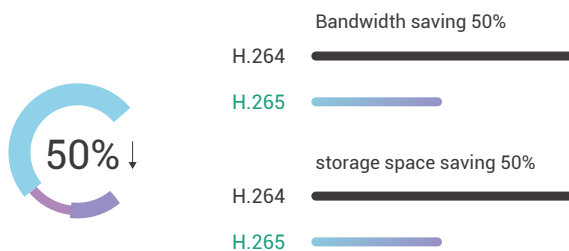
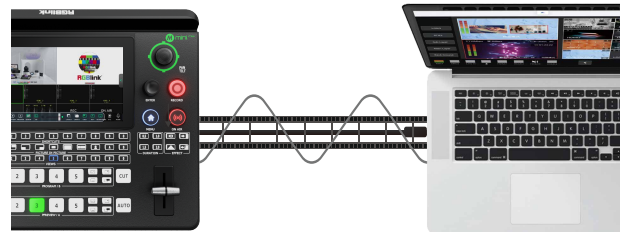


Pro Streaming

Enhanced Streaming

H.265

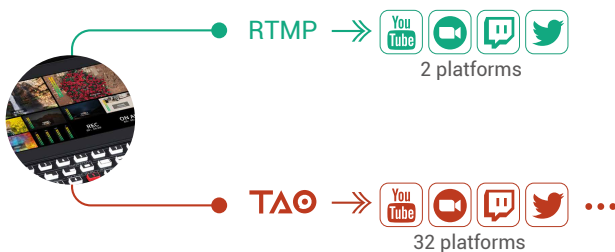
Take advantage of advanced H.265 compression and encoding for higher performance streams.



Capture & Share

Connect mini-max to a laptop for instant recognition as a webcam to enable capture for apps such as OBS and more of others.

Share your presentation on Teams, Zoom™ or any collaboration platform.



RTMP(s)

Stream up to four multiple platforms simultaneously directly over IP without a laptop. And with TAO cloud integrated directly into mini-max, cloud-stream up to 32 platforms or connections at the same time.

Recording

The USB 3.0 recording output interface can be directly connected to a hard drive with a maximum capacity of 2T.

It can simultaneously record while streaming, and the recording of 32Mbps high-definition video can last 100 hours.

Audio and video can be imported and used simply by inserting a USB disk.

- USB 3.0
- Record
- USB MIC



PRELIMINARY

Connections

Input	HDMI 2.0	4 × HDMI-A
	UVC (4K Webcam)	1 × USB-C
	12G SDI	2 × BNC
	NDI	1 × RJ45
Output	HDMI 1.3 (Multiview)	1 × HDMI-A
	HDMI 2.0 (Program)	1 × HDMI-A
	USB (4K Record)	1 × USB-C
	USB (4K Capture)	1 × USB-C
	NDI	1 × NDI
Audio	MIC IN 1	1 × 6.35mm XLR + TS Jack (48V Phantom Power)
	MIC IN 2	1 × 6.35mm XLR + TS Jack
	LINE IN	1 × 6.35mm TRS Jack
	OUT	1 × 6.35mm TRS Jack
		1 × 3.5mm mini-Jack
Communication/ Stream/Upgrade	LAN	1 × RJ45
Power	Power Supply	1 × USB-C

Control

Remove Control	TAO Cloud、webAPP
Firmware Update	TAO Cloud

Operational Environment

Temperature	0° to 60° C
Humidity	10-85% RH

Physical Specifications

Weight	Device	0.60 kg
	Packaged	1.38 kg
Dimensions	Device	291×222.6×71.3mm (11.4×8.8×2.8in)
	Packaged	332×238.5×109mm (13.1×9.4×4.3in)

In the Box

mini-max	1
PD power adapter	1
USB-C data cable	1
quick guide	1
Stands	2

Order Codes

230-0012-01-0	mini-max
---------------	----------

Performance

Input Resolutions	HDMI 2.0
	SMPTE
	720p@50/60 1080p@30/50/60
	2160p@30/50/60
Output Resolutions	VESA
	1024×768p@60 1280×720p@60
	1280×768p@60 1280×800p@60
	1280×1024p@60 1360×768p@60
	1366×768p@60 1440×900p@60
	1600×1200p@60 1680×1050p@60
	1920 × 1080p@60 1920 × 1200p@60
	3840 × 2160p@60 4096 × 2160p@60
	12G-SDI
	2160p@30/50/60 1080p@30/50/60
Supported Standards	1080i@50/59.94/60
	720p@50/59.94/60
	HDMI 1.3
	1080p@60
Color Space	HDMI/USB (Webcam)
	1080p@30/50/60 2160p@30/50/60
	HDMI 2.0 HDCP 2.2
	SDI (12G/3G/HD/SD)
Video Latency	USB 3.0
	NDI HX3
	RGB 8bit YCbCr 4:4:4 8bit
	YCbCr 4:2:2 8bit
Audio Format	PCM/2ch/24bit/48kHz
	Sampling Rate
	48 KHz
	Bitrate
Record Formats	24bit
	MP4 (up to 32Mbps)
	Disk Formats
	FAT32 exFAT
USB Power Delivery	USB Power Delivery
	UVC-C
	Supported Cables
	Certified USB PD Aware
Input Power	Type-C 12V/3.3A
	Maximum Power
	Consumption
	40W