



**Green Lion**

## **COMPACT AIR PURIFIER with 3 In 1 Filtration**

SKU: GNCMPAIRPRWH

Model No: GL-AP18

## Table of Contents

Overview	2
Important Safety Notes	2
Filtration Technology	4
Product Diagram	4
Control Panel Overview	5
Cautions Before Operating	5
Replacement of the Filters	5
Operation Instructions	6
Control Panel Operation	7
Cleaning Instructions	9
Troubleshooting	9
Specifications	9
Disposal	9
Warranty	11
Contact Us	11

## Overview





Thank you for choosing our product. Before using it, please read this User Manual carefully to ensure proper usage. Keep it in a safe place for future reference.

This air purifier utilizes biological aseptic technology to inhibit bacterial reproduction and suppress virus activation. Clean air is essential for health, and optimizing indoor air quality is key to creating a healthy, sustainable living environment.

## Important Safety Notes

To ensure the safety of users and others, please adhere to the following guidelines:

### Warning/Attention

 <b>Warning</b> Improper use or handling of the product may result in severe injury or death.	
 <b>Caution</b> Misuse or mishandling may cause injury.	
 FORBIDDEN ACTION	 MANDATORY ACTION

1. The appliance may be used by children aged 8 years or older, as well as individuals with reduced physical, sensory, or mental capabilities, provided they are supervised or instructed on its safe use and made aware of the associated hazards. The appliance should not be used as a toy by children. Cleaning and maintenance should not be performed by children without supervision.

2. If the power cord is damaged, it must be replaced by the manufacturer, a service agent, or another qualified professional to eliminate any hazards.

## WARNING

Children should be supervised to prevent them from touching or using the machine.



Do not connect or disconnect the power with wet hands, as this may cause electrical shock.



AVOID WET CONTACT

Disassembly, repair, or reconstruction of the appliance is prohibited. This may cause fire or damage. Please send the appliance to an authorized retailer for repair.



DO NOT DISASSEMBLY

Do not use an overvoltage socket or improper wiring connector. Always use the rated voltage to prevent fire.



FORBIDDEN

Ensure the power plug is inserted completely into the socket. Failure to do so may cause fire due to heating or electrical shock. Do not use a damaged plug or loose socket.



Avoid water on the surface of the unit, as it may cause a short circuit or electrical shock.



AVOID WET SURFACE

The appliance must be disconnected from the power supply before cleaning or performing any maintenance. Failure to do so may cause the unit to unexpectedly start, which could lead to electrical shock or injury.



DISCONNECT POWER

Do not insert any metal objects into the unit, as this may cause injury or an electrical shock.



FORBIDDEN

Do not attempt to repair the appliance if the power cord or plug is damaged. This could lead to short circuits, electrical shocks, or fire. Please send the appliance to an authorized retailer for repair.



FORBIDDEN

If dust accumulates on the plug, it may weaken the insulation and potentially cause a fire. Remove the plug from the socket and clean it with a cloth. Always remove the plug from the socket if the appliance will not be used for an extended period.



## ATTENTION

Do not power on the unit while using insecticide in the room. Otherwise, the insecticide may be stored inside the unit and released during operation, which can be harmful to health. Please ensure proper ventilation after using insecticide before turning on the unit.



FORBID

Do not use the unit in rooms with heavy fumes, such as kitchens. This may cause harm as the unit is not designed to function as a ventilator.



Do not blow any combustible materials or lit cigarettes into the unit. This may cause a fire.



Do not use the unit in damp or high-temperature environments, such as bathrooms. Failure to do so may result in electrical issues, leakage, or fire hazards.



Always hold the plug when unplugging the appliance. Grasping the cord may cause a short circuit, breakage, electrical shock, or fire. Always pull the plug itself to ensure safety.



Keep the appliance away from alcohol, organic solvents, or insecticides. These substances can cause material degradation, short circuits, electric shock, injury, or even fire. Exercise caution and keep such substances away from the appliance.



Ensure proper ventilation when using the appliance in a room with open flames or heat sources. Without proper ventilation, this could result in the accumulation of harmful gases like carbon monoxide, as the unit does not function as a ventilator.



Disconnect the plug from the socket under the following circumstances: If the appliance switches do not operate correctly. If the power cord or plug becomes unusually hot. If any strange odors, unusual noises, or vibrations occur. In case of any other abnormalities or malfunctions.

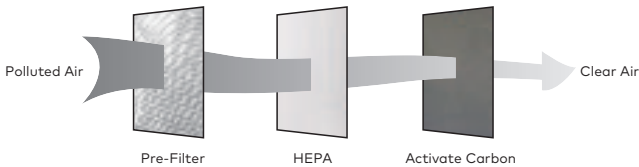
If the power cord is damaged, send it to an authorized retailer, service center, or technician for repair. Do not attempt to repair the appliance yourself to avoid further damage or potential hazards.

## Filtration Technology

The composite filter consists of a pre-filter, HEPA filter, and activated carbon. The pre-filter removes larger particles, while the HEPA filter effectively captures up to %99.95 of PM2.5 particles. Activated carbon, produced using modern biological carbonization technology, has a higher adsorption capacity and effectively removes smoke and formaldehyde.

The air purification process follows this sequence:

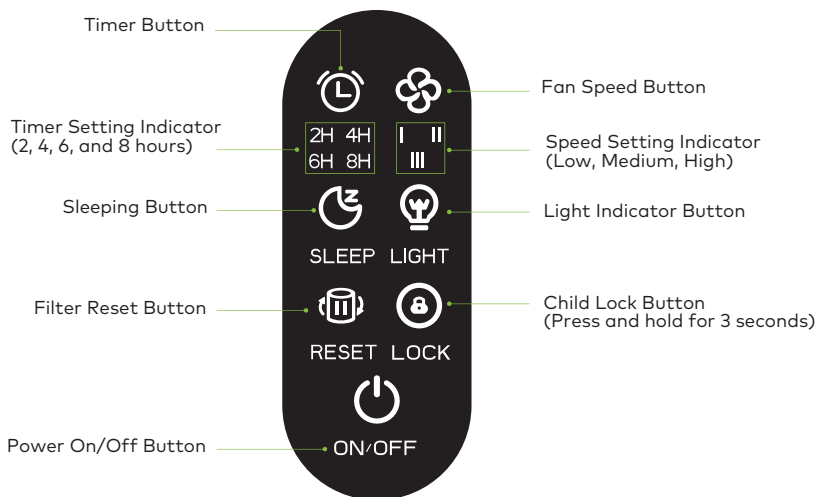
1. Polluted Air is drawn into the unit.
2. The air passes through the Pre-filter, which removes larger particles.
3. The air is then filtered by the HEPA filter, which captures fine particles such as PM2.5.
4. Finally, the air passes through Activated Carbon, which removes harmful gases like smoke and formaldehyde.
5. The result is Clear Air.



## Product Diagram



## Control Panel Overview



## Cautions Before Operating

1. Ensure that the air inlet and outlet of the machine are at least 30 cm away from the wall and surrounding furniture.
2. Avoid placing the machine in front of heat sources or air outlets.

## Replacement of the Filters

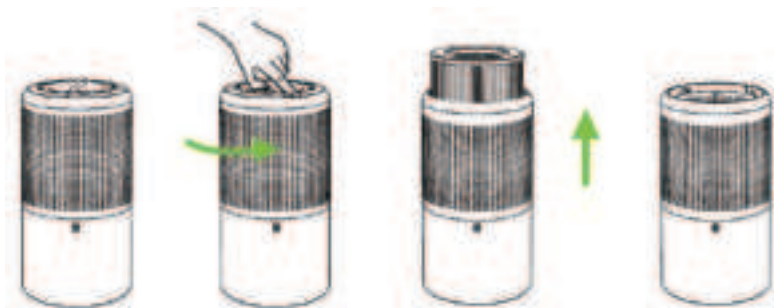
1. Reminder to Replace the Filter and Reset
  - 1.1 When the "filter replacement reminder" indicator light is illuminated, it indicates that the filter's lifespan (1440 hours) has ended.
  - 1.2 Replace the filter with a new one. After replacing the filter, press and hold the 'reset' button for approximately 3 seconds. The "filter replacement reminder" light will turn off, and the machine will begin tracking the usage time of the new filter.

## 2. To Remove the Filter:

**2.1** Turn off the machine and unplug it.

**2.2** Place the machine upside down. Use one hand to hold the body of the machine, and with the other hand, press down on the cover while turning it left to open the base cover.

**2.3** Carefully remove the filter.

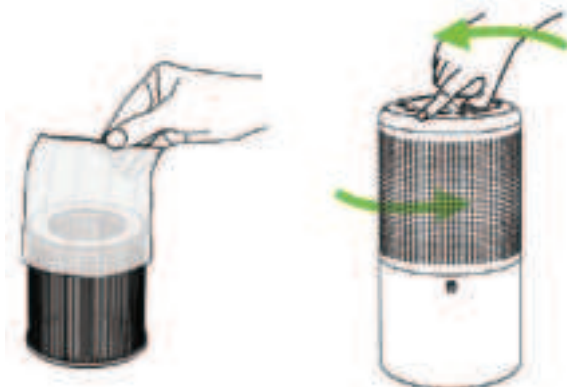


## Operation Instructions

### 1. Install the Filter

**1.1** Remove the protective film from the new filter and install the filter.

**1.2** Hold the machine body with one hand while using the other hand to press down and rotate the cover to the right to secure the filter in place.



2. External Power Source

DC Adapter: Connect the adapter to the machine's socket for power.



Machine Socket



Adapter

3. Aroma

A replaceable aroma pad is included in the aroma tray located at the top air outlet. You can add a few drops of essential oil (not included) to the pad. This provides a refreshing aroma, allowing you to breathe in fresh air and enjoy a relaxing experience.

**Control Panel Operation**

Fan Speed Setting

Press the wind speed button to adjust the fan speed.



Timer Setting

Touch the timer button to set the desired timer duration (2 ,4 ,6, or 8 hours).





### Child Lock Setting

Use the child lock feature to temporarily lock the control panel and deactivate the function buttons. To activate or deactivate the child lock, press and hold the 'Child Lock' button for approximately 3 seconds. (The child lock indicator light will be illuminated, as shown below.)



Turn Off Child Lock

Filter replacement light is off.

### Reset After Replacing the Filter

The reset indicator will light up when the cumulative running time reaches 1440 hours, indicating that the filter needs to be replaced. After replacing the filter, press and hold the reset button for approximately 3 seconds to reset the filter's lifetime counter. The reset indicator light will turn off.



Filter replacement light is on.

Filter replacement light is off.

## Cleaning Instructions



Always unplug the appliance from the socket before cleaning or performing maintenance.

- To clean the body of the appliance, use a damp cloth and then wipe it dry.
- If the machine is heavily soiled, you may use a neutral detergent for cleaning, but ensure it is diluted before use.
- Do not clean the unit with solvents such as benzene, alcohol, or abrasive cleaners, as these may cause distortion or discoloration.

## Troubleshooting

Problem	Possible Cause	Solution
The device does not work.	Check if the plug is correctly connected.	➡ Power plug should be plugged properly
	Check if the base cover is properly installed.	➡ Recover the base cover correctly
The device does not function effectively.	Is there a very strong odor in the using environment? (Notes:air should be purified continuously)	➡ Suggesting to ventilate, then start up the machine.
	Does the using life time for filters come to the end?	➡ Please replace new filter
High noise is heard.	Is the PE bag for filter removed?	➡ Please take out filter and tear off PE bag.
	Does the using life time for filter come to the end?	➡ Please replace new filter.

If the problem is still existed after above inspections, please disconnect the power and send it for repair.

## Specifications

Model No	GL-AP18
Material	ABS
Rated Power	22W
Rated Voltage	110-220V

Rated Frequency	50/60Hz
CADR	185 m3/h
Area Coverage	≤22 m2
Noise Level	≤60 dB
Fan Speed	Low-Medium-High
Timer Options	2H/4H/6H/8H
Filter Lifespan	1440 Hrs
Plug-In Port	DC Port
Product Weight	1.75 kg
Product Dimensions	191*191*363 mm



## Warranty

Products that you buy directly from our **Green Lion** website or shop come with a 24-month warranty.

When you buy **Green Lion** products from any of our approved sellers, you only get a 12-month warranty. If you want to extend this warranty, go to our website at **<https://www.greenlion.net/warranty>** and fill out the form with your information. Don't forget to upload a picture of the product too. After we've checked and accepted your request, we'll send you an email to confirm that your product's warranty has been extended.

For more info, please check:  
**<https://www.greenlion.net/warranty>**

## Contact Us

If you have any questions about this Privacy Policy, please contact us at:

Website: **<https://www.greenlion.net/>**

Sales: **[sales@greenlion.net](mailto:sales@greenlion.net)**

Service Support: **[Support@greenlion.net](mailto:Support@greenlion.net)**

Telegram: **[@greenlion\\_global](https://t.me/greenlion_global)**

Instagram: **[@greenlion\\_global](https://www.instagram.com/greenlion_global)**