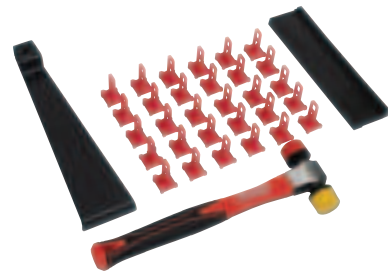




PRO FLOORING INSTALLATION KIT

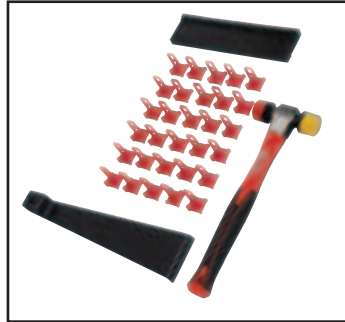


81043BR

Product Description Pro Flooring Installation Kit

DESCRIPTION

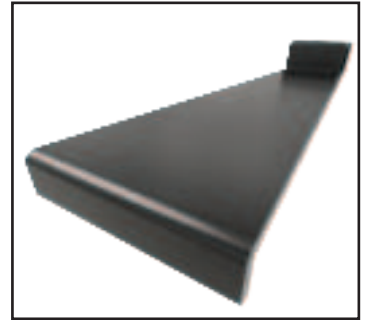
Install vinyl, laminate and hardwood flooring with precision and confidence with the BRUTUS Pro Flooring Installation Kit. Developed by professionals for professionals and DIYers alike, this kit features 30 expansion joint spacers that stay in place until you're ready to remove them. Reusable, easy to use and transport.



Installation Method Glued Vinyl, Click-Lock Vinyl Plank, Laminate and Hardwood Flooring

EXTREME ANGLE PULL BAR*:

Durable steel construction and angled design provides durability and flexibility, even after prolonged use with dual-face mallet to secure tight seams between most brands of vinyl, laminate or wood flooring. Extreme angle pull bar is ideal for moving planks together when space is limited or against a wall. Soft felt pads on the bottom help prevent scratching or damaging finished floor during installation.



*Do not use with a metal hammer.

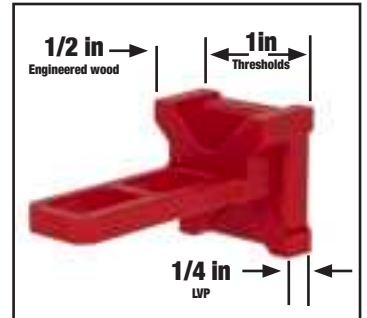
TWO-HEADED MALLET:

Dual-faced 12 oz. mallet can be used to secure glued / click-lock vinyl or laminate / hardwood floor. The head is forged from carbon steel and coated for rust prevention. This mallet is well balanced for ease of use during installations. Use either side of the mallet for tapping against the pull bar or tapping block, and you can use the yellow side to gently nudge flooring.



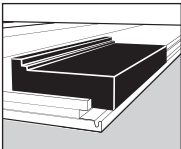
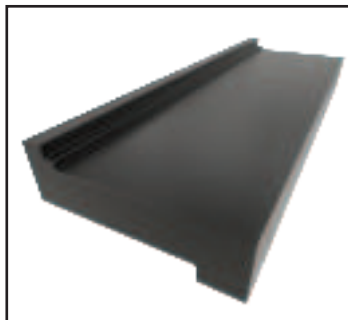
3-IN-1 EXPANSION SPACERS:

Patent-pending 3-sided design, ensures accuracy in expansion joint spacing, including: 1/4" (vinyl planks), 1/2" (laminate / wood) and 1" thresholds between rooms to allow the flooring to expand and contract during the changes of seasons. Best of all, these self-leveling spacers will not tip over during installation.

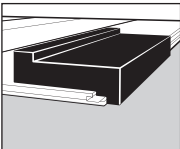


TAPPING BLOCK*:

Tapping block evenly distributes tapping force from mallet to secure flooring planks together. Uniquely designed to be used with the Brutus Mallet to close gaps between planks without damaging the tongue and groove or locking system.



Laminate & Engineered



Vinyl Tile & Plank

*Do not use with a metal hammer.



Please follow all industry standards and floor covering manufacturer's recommendations for installation.