

BL2026M
6MP IP Bullet camera, 5x motor zoom
Quick Start Guide



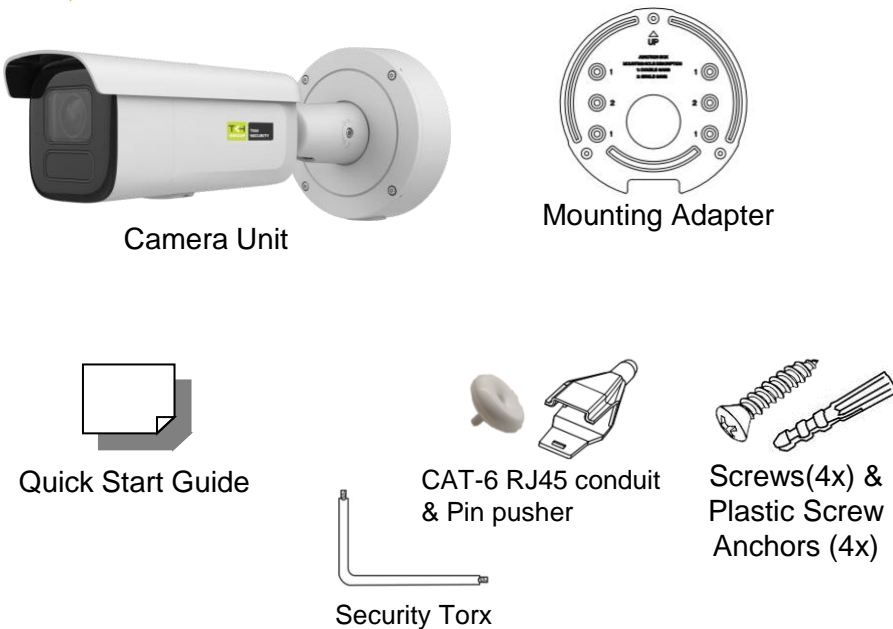
Find additional manuals, the
datasheet, the EU Declaration of
Conformity, and the latest firmware
for this product at:
tkhsecurity.com



Manufacturer information:
Name: TKH Security B.V.
Address: Werner von Siemensstraat 7,
2712PN, Netherlands
Email: info.nl@tkhsecurity.com



Unpack



Subject to modification. Actual product and accessories may differ in appearance.

Installation Notices



Caution installation shall be performed by qualified
personnel only. Installation shall be in accordance with
local procedures. The camera contains batteries.

Battery replacement shall not be applied in view of the
risk of explosion. Dispose of used batteries according to
the instructions.

For "PoE" input connection, use only with UL listed
I.T.E. with "PoE" output. Description for the "PoE" is
intended to be connected to not exposed (outside plant)
networks or equivalent statement in installation
instructions.

Connectors

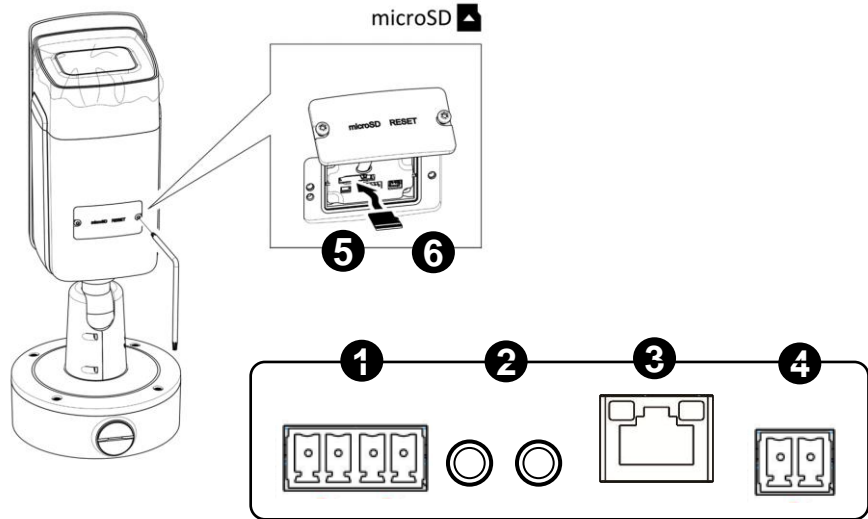


Figure 1 Camera Connectors

Connector Definition

No.	Connector	Definition
1	Alarm I/O	Alarm I/O connection
2	Audio I/O	Line In and Line Out connection
3	RJ-45 Port	For network and PoE connections. Please contact Siquira for a compatible PoE injector.
4	Power(DC 12V)	Power Connection
5	Micro SD Card Slot	Insert the SD card into the card slot to store videos and snapshots. Do not remove the SD card when the camera is powered on.
6	Reset Button	To restore camera to factory defaults, power up with Reset button pressed for at least 10s.

Table 1 Connector definition

Camera Cabling

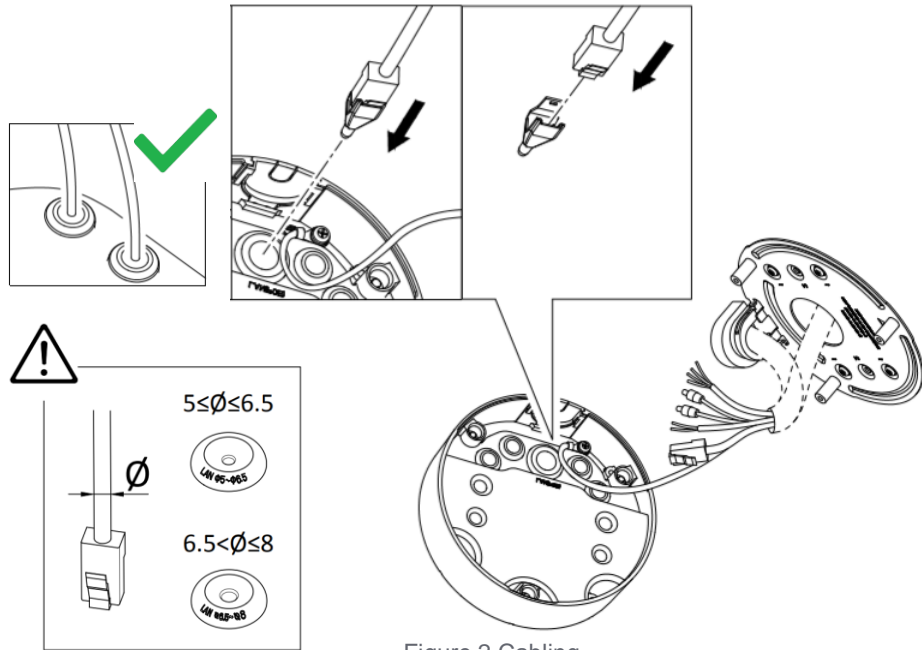


Figure 2 Cabling

Waterproof Notice

Bullet camera is suggested to be mounted either by
wall/pole mount or ceiling mount. Other mounting may
cause potential water leakage at camera, which is not
covered in warranty.

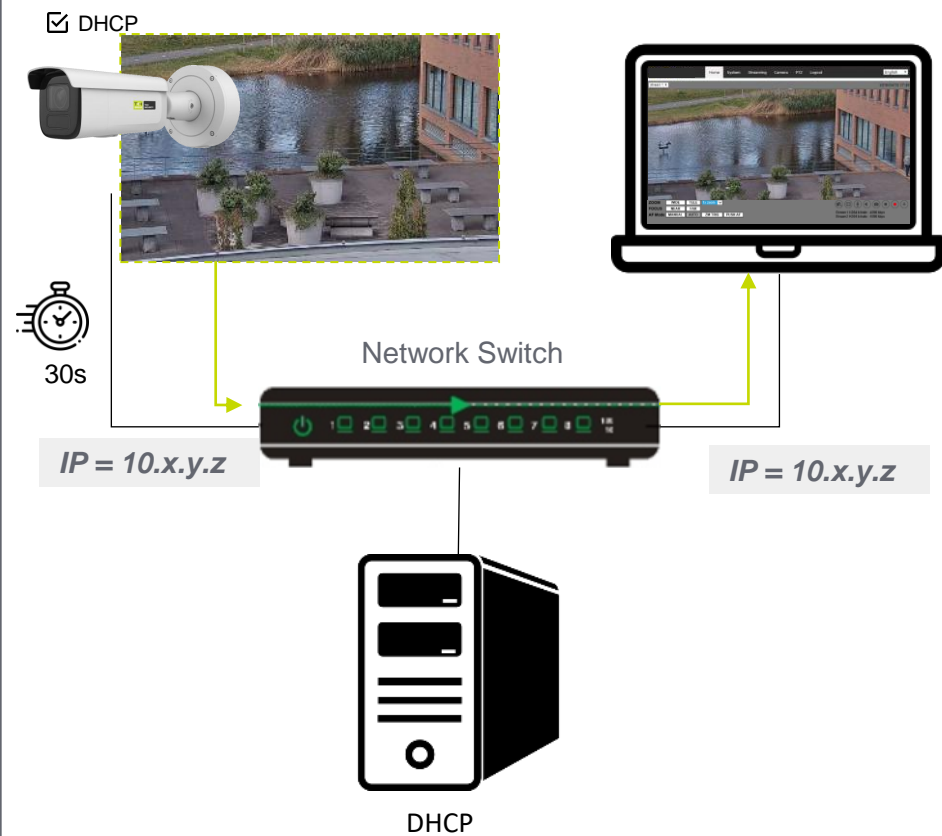


Figure 3 Wall/Pole Mount

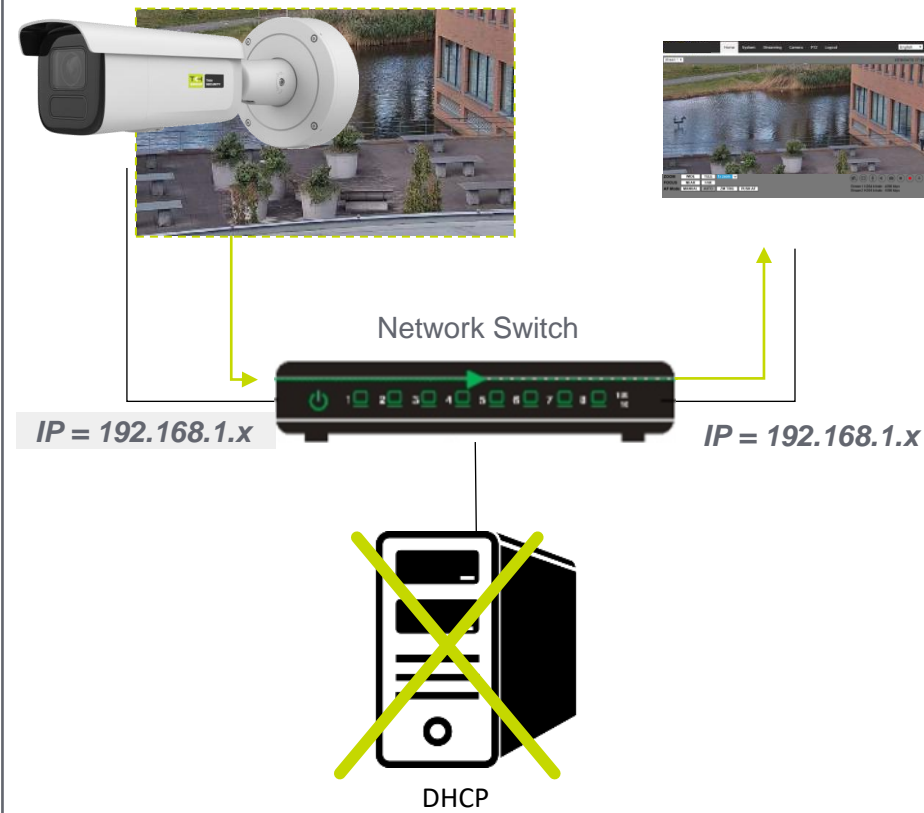


Figure 4 Ceiling Mount

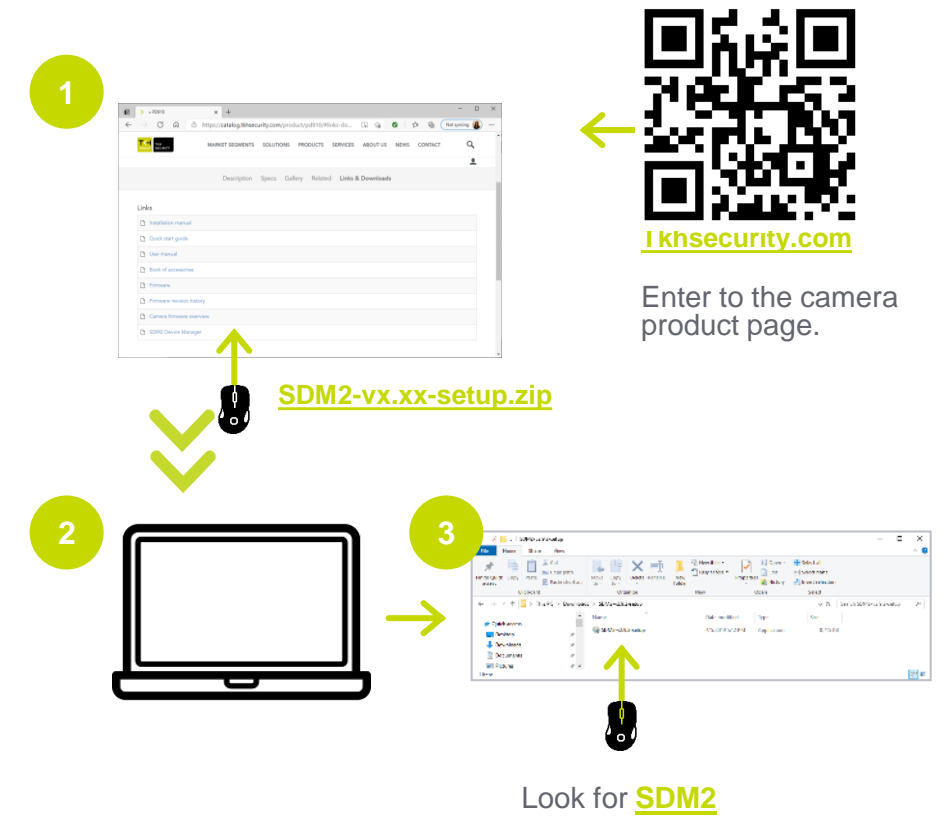
Accessing the Camera - DHCP



Accessing the camera – Fixed IP



Auto detect with SDM2



1st time camera login

Set a strong password

Activation

User Name: admin

Password: [Input field]

Valid password range [8-16]. You can use a combination of numbers, lowercase, uppercase and special character for your password with at least two kinds of them contained.

Confirm: [Input field]

OK

qwer1234



x6W@oM0a!9#F



1st time camera login

TKH GROUP TKH SECURITY

User Name: [Input field]

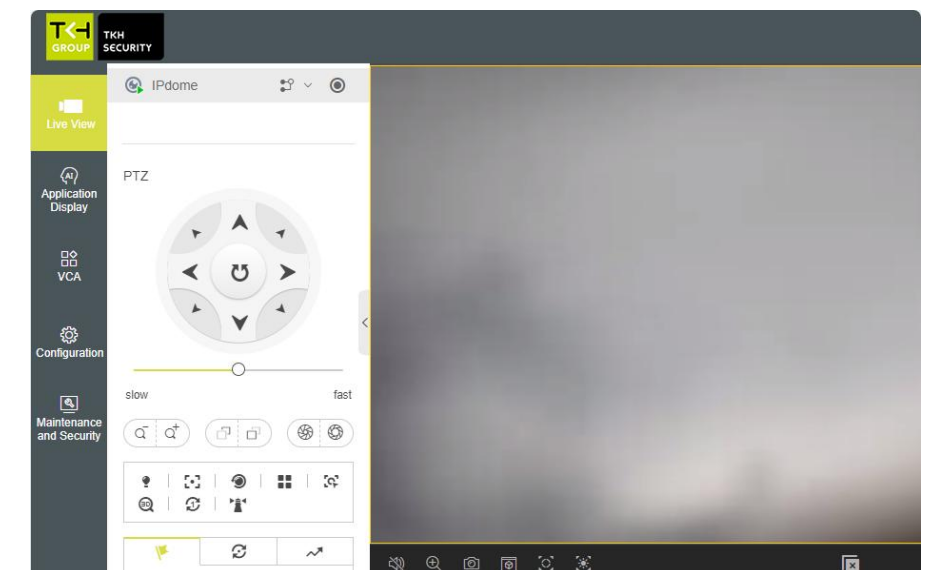
Password: [Input field]

Language: English

[Forgot password?](#)

Log In

Browser-based Viewer



It is not recommended to continuously (24/7) record with the micro-SD card, as the camera may not support long-term continuous data read/write. Contact the manufacturer of the micro-SD card for information regarding the reliability and the life expectancy.