

VERA DREAM WINGS ASSEMBLY INSTRUCTION



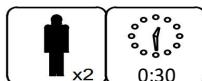
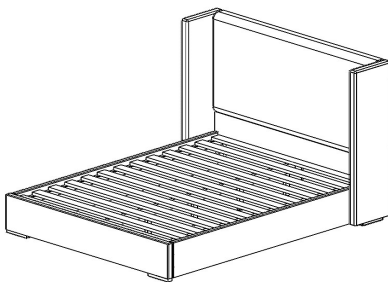
Vendor Information	
Vendor Name:	LSMX1
Vendor Code:	V-005852

Living Space Information	
Vendor Collection:	VERA DREAM

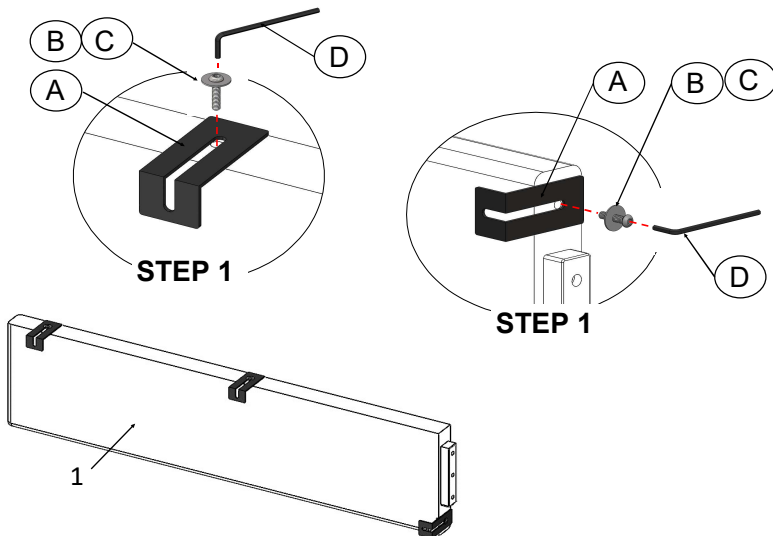
ITEM	DESCRIPTION	QUANTITY
1	VERA DREAM WINGS	2

LIVING SPACES		
1	WINGS	X2
Hardware bag included below with red ribbon to located.		
A	BRACKET	X6
B	5/16-18X1-1/4" SCREW BUTTON HEAD CAP	X10
C	WASHER 5/16 PLAIN	X10
D	3/16 SHORT ARM HEX KEY	X2

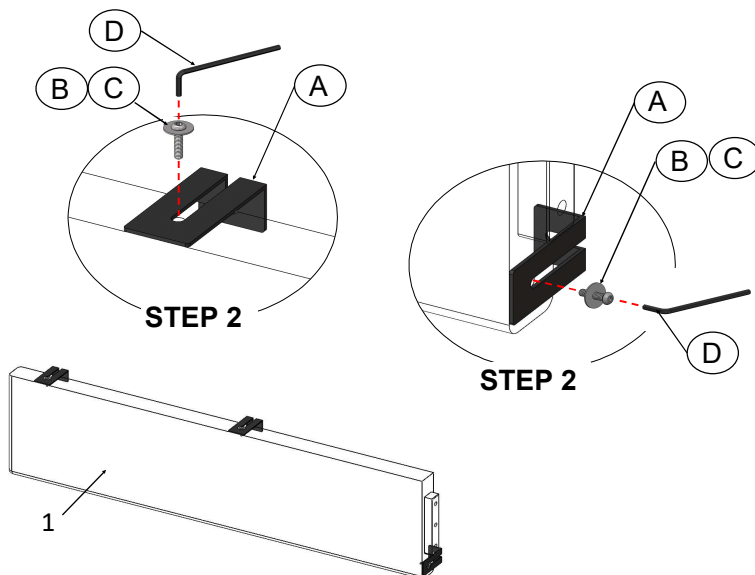
VERA DREAM BED WITH WINGS



STEP 1: Attach brackets (A) facing left side to wing, to the end of the slot, using wrench(D), screw (B), and flat washers (C).



STEP 2: Attach brackets (A) facing right side to wing, to the end of the slot, using wrench(D), screw (B), and flat washers (C).



VERA DREAM WINGS ASSEMBLY INSTRUCTION



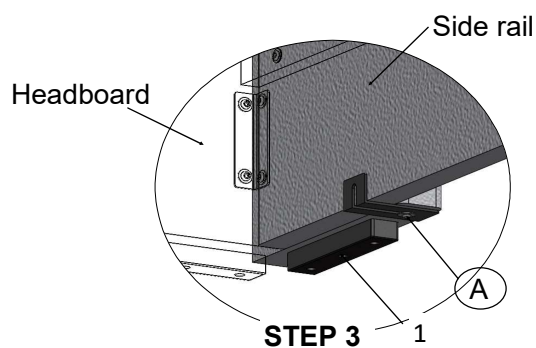
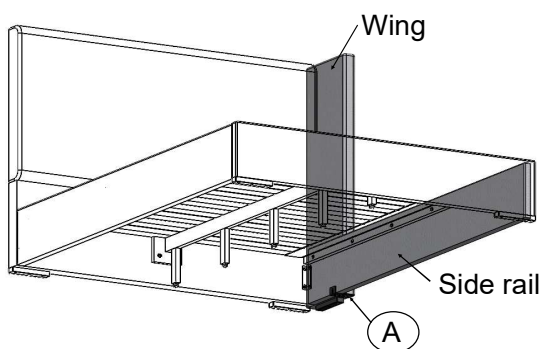
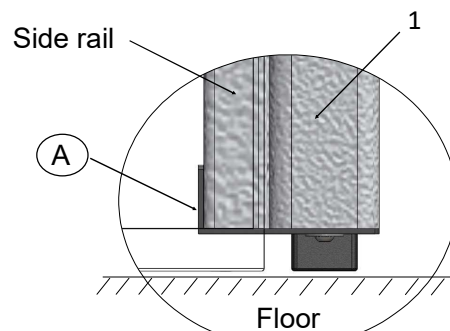
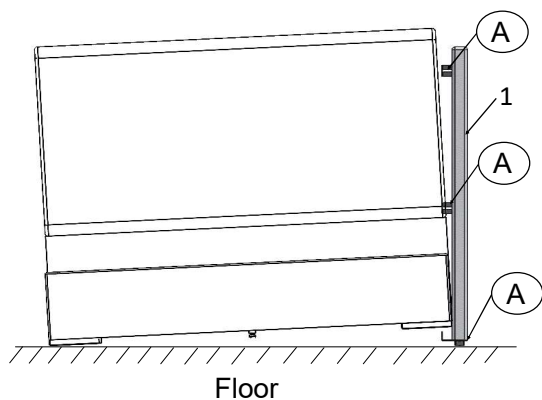
Vendor Information

Vendor Name: LSMX1
Vendor Code: V-005852

Living Space Information

Vendor Collection: VERA DREAM

STEP 3: Raise bed to put inside the side rail of wing bracket.



STEP 4: Attach bracket (A) to headboard, using wrench (D), 4 screws (B), and flat washers (C).

