

Rangehood Stainless Steel (52cm)

KAM52RHVAHA

Safety & Warnings

Installation

- Read this user guide thoroughly before installation and use. Keep it in a safe place for future reference.
- Kogan.com is not liable for any damage caused by incorrect or improper installation.
- This rangehood can only be installed in Ducted Mode (venting fumes outside).
- Installation and servicing must be carried out by a licensed trade professional.
- Ensure the mains voltage matches the rating specified on the appliance label.
- Do not connect the rangehood to any exhaust duct used for combustion fumes (e.g., from boilers, fireplaces).
- If installed with non-electrical appliances such as gas cooktops, ensure adequate room ventilation to prevent the buildup of exhaust gases. The kitchen must have an opening to the outside for fresh air intake.
- Maintain a minimum clearance of 750mm between the rangehood and a gas cooktop and 650mm for an electric cooktop. If the cooktop manufacturer specifies a greater distance, follow those requirements.
- Secure all mounting screws and fixtures correctly as per the instructions to prevent electrical hazards.
- To ensure proper earthing continuity, connect the power cord to an electrical outlet with a grounding terminal.
- This rangehood is designed for indoor, non-commercial use only. It is not suitable for use in barbecue areas, commercial kitchens, or other high-use environments.
- A minimum of two people is required to install or move the rangehood to prevent injury.

Usage

- This appliance is for domestic use only and is designed to remove cooking fumes.
- The appliance must not be used by children under 8 years old or by persons with reduced physical, sensory, or mental capabilities unless they have been given supervision or instruction regarding its safe use.
- Do not allow children to play with the appliance.
- Cleaning and user maintenance must not be performed by children without supervision.
- Do not leave open flames beneath the rangehood while it is in operation.
- Adjust cooktop flames to ensure they do not extend beyond the edges of cookware.
- Always monitor deep-frying, as overheated oil can ignite.
- The appliance should only be used in accordance with the instructions to avoid fire hazards.
- The rangehood must not be used outdoors.

Maintenance

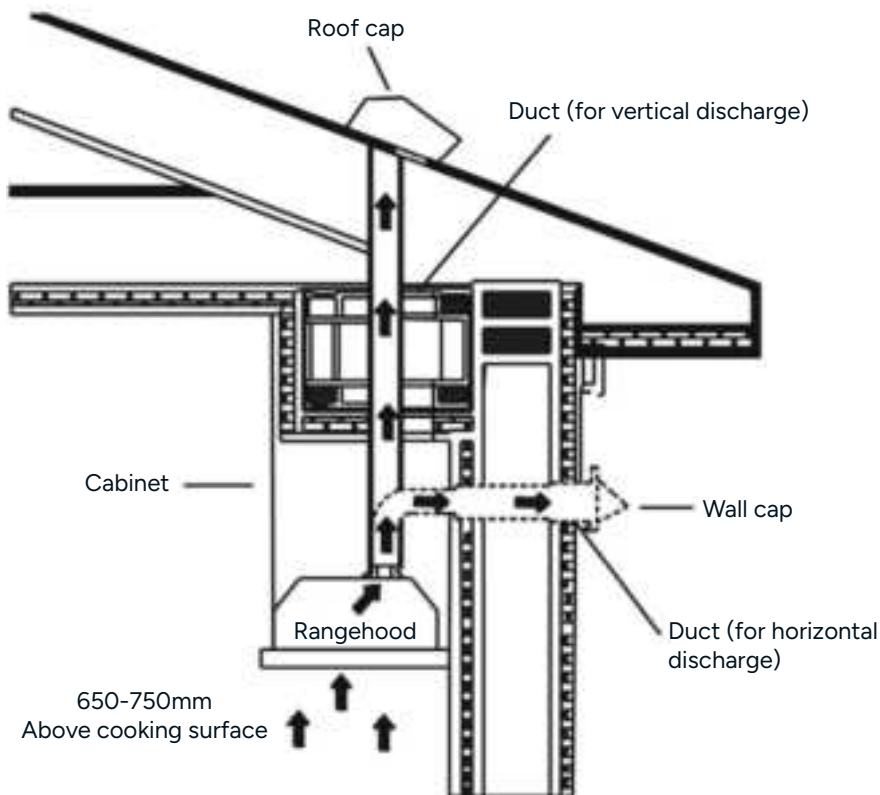
- Proper maintenance ensures optimal performance and safety.
- Disconnect the rangehood from power before performing any maintenance.
- Clean or replace aluminium grease filters and activated charcoal filters at the specified intervals.
- The filter is made of high-density aluminium. Do not use corrosive detergents for cleaning.
- Failure to clean the rangehood regularly increases the risk of fire.
- Clean the rangehood every two months with hot water and a non-corrosive detergent to prevent dirt buildup and corrosion.
- Do not use open flame or allow oil to collect beneath the rangehood.
- If the power cord is damaged, it must be replaced by Kogan.com, an authorised service agent, or a qualified electrician to avoid hazards.
- If the plug or cord is damaged, cease use immediately and contact **help.Kogan.com** for support.
- If there is any fault with the appliance, cease use immediately and contact **help.Kogan.com**.
- Do not dispose of this product with general household waste. Follow local regulations for electronic waste disposal.

General Safety Warnings

- Do not inspect or remove filters while the rangehood is in operation.
- Avoid touching the light bulbs immediately after use, as they may be hot.
- Do not operate the rangehood with wet hands.
- Do not flambé food (e.g., ignite alcohol or grease) under the rangehood.
- Always supervise cooking when frying to prevent oil fires.
- The minimum clearance between the cooktop and the rangehood must be at least 65cm, except for specific non-combustible parts as allowed by safety regulations.
- **CAUTION:** Accessible parts may become hot when the rangehood is used with cooking appliances.
- The rangehood and its filters should be cleaned regularly according to this guide to ensure optimal performance.
- The rangehood must not discharge exhaust air into a chimney or flue used for other gas appliances.
- Follow all local regulations regarding external air evacuation.
- The rangehood and other fume extractors may affect the safe operation of gas or fuel-burning appliances due to backflow of combustion gases. After installation, a licensed professional must test the operation of gas appliances to ensure proper ventilation and prevent carbon monoxide risks.

Overview

This rangehood is designed for ducted installation only. It draws in kitchen air containing fumes and odours, filters out grease, and expels the air outside through an exhaust duct.



Caution:

To reduce the risk of fire, metal ductwork must be used.

Installation

- Determine the optimal route for the ductwork between the rangehood and the external vent.
- For maximum efficiency, use a short, straight duct run wherever possible.
- Avoid long duct runs, elbows, and transitions, as these reduce the hood's performance. If a longer duct run is necessary, consider using larger ducting to maintain efficiency.
- A Ø150mm round duct is recommended. If required, a reducer is included to adapt from Ø 150mm to Ø 120mm.
- The exhaust air must not be discharged into a flue used for venting gas or fuel-burning appliances. All applicable local regulations regarding air discharge must be followed.
- Install a roof or wall cap. Connect the round ductwork to the cap and work back towards the rangehood. Seal all duct joints with duct tape to prevent leaks.

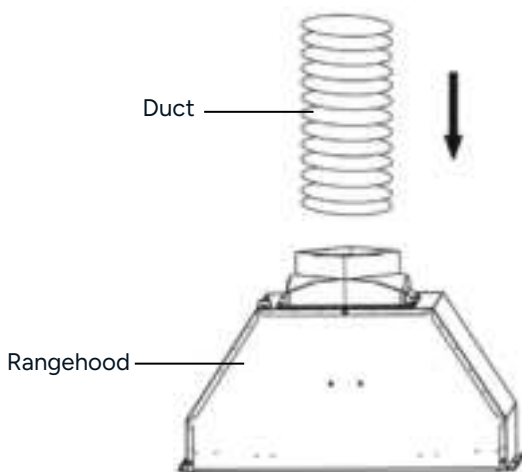
Electrical Connection

- All electrical wiring must only be performed by a licensed professional in accordance with relevant electrical codes and standards.
- Before installation, turn off power at the main switch to prevent electrical hazards.
- If the power cord is damaged, it must be replaced by Kogan.com, an authorised service agent, or a qualified electrician to avoid safety risks. Cease use immediately and contact **help.Kogan.com** for support.
- Only use the original power plug and cord supplied with the appliance. Do not use extension cords or alternative power sources.

Ducting Installation

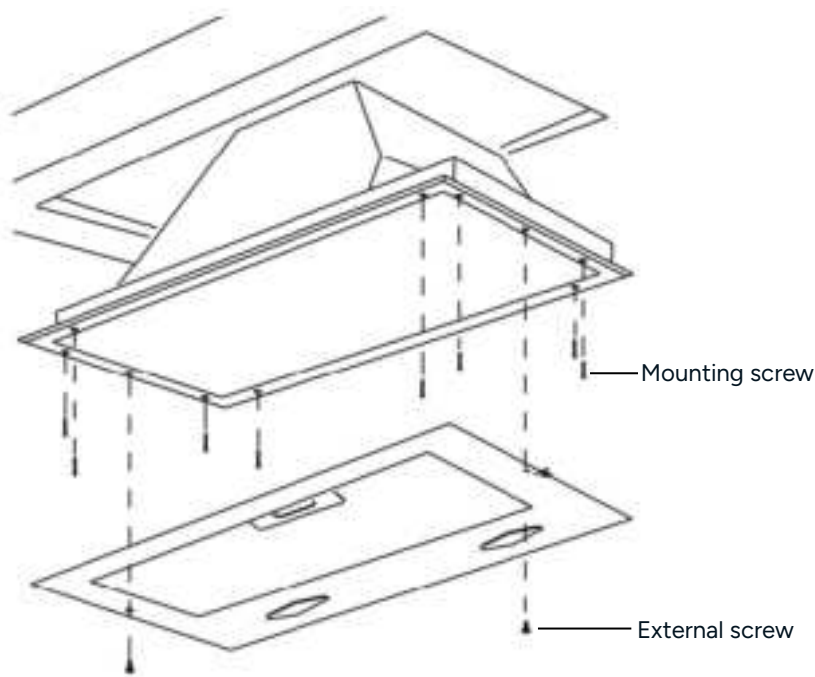
Before securing the rangehood, the outlet exhaust duct must be installed for proper air evacuation. Ensure the ducting meets the following requirements:

- Keep the duct as short as possible to maximise efficiency.
- Minimise bends, with a maximum bend angle of 90° to reduce airflow resistance.
- Use certified materials in compliance with local regulations, ensuring the interior surface is as smooth as possible.
- Avoid sudden changes in duct size, as this can reduce performance. A 155mm diameter duct is recommended for optimal airflow.



Fitting Under Wall Unit

1. Drill a 165mm hole in the wall unit to accommodate the exhaust duct.
2. Check the position of the power outlet and determine the cable routing. If necessary, drill an additional hole in the wall unit for the power cable.
3. Remove the two visible screws on both sides of the rangehood to detach the faceplate, exposing the eight mounting holes around the unit.
4. Lift the rangehood into position and fit it through the cabinet opening. Secure it using the eight long mounting screws, then reattach the faceplate by tightening the two screws.
5. Complete the electrical connection following the safety instructions.
6. Installation is now completed.



Notes:

- Exhaust air must not be discharged into a flue that is used for venting fumes from gas or fuel-burning appliances.
- If the installation instructions for the gas cooktop specify a greater clearance than 650mm, follow the cooktop manufacturer's requirements.
- All local regulations regarding the safe discharge of exhaust air must be adhered to.

Operation

- This rangehood does not have a built-in power button or control panel. The only way to turn the appliance on or off is by controlling power at the electrical outlet or wall switch.
- For convenience and ease of use, it is recommended that a licensed electrician install a dedicated power outlet or switch near the installation area, allowing for easier operation of the rangehood.

Additional Considerations:

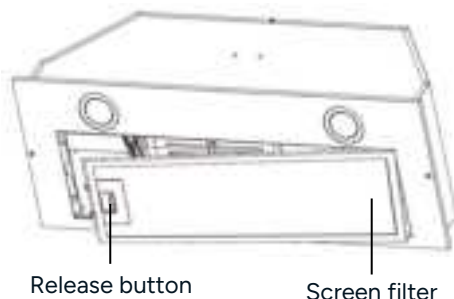
- Ensure the power outlet is easily accessible for safe disconnection during maintenance or emergencies.
- Do not use an extension cord or power board to operate the rangehood.
- If experiencing power issues, check the outlet and circuit breaker before contacting support.
- Always turn off power at the outlet before performing any maintenance or cleaning.

Cleaning & Care

Prior to any maintenance, cleaning operation, ensure the power is disconnected.

Cleaning the Screen Filter

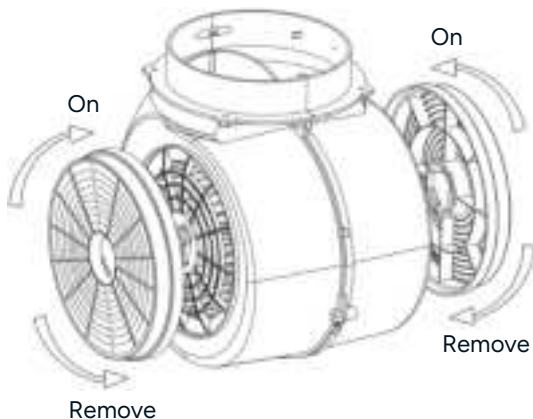
- Press the release button and remove the screen filter.
- Place the screen filter into the dishwasher with detergent, set the temperature below 60°C.
- Do not use abrasive detergent as this will damage the screen filter.
- Make sure that the hood is shut off before cleaning.



Replacing the Charcoal Filter (not applicable for ducted mode)

The charcoal filter is an optional component used only in recirculation mode. It is not washable and cannot be regenerated. The filter should be replaced approximately every 3 months or more frequently in the case of heavy usage.

1. Remove the screen filter to access the charcoal filters.
2. Remove the charcoal filters by rotating them counterclockwise.
3. Install the new charcoal filters by rotating them clockwise until they lock into place. A click sound may indicate proper installation.
4. Reinstall the screen filter according to the installation instructions.
5. If applicable, install the metal grid after securing the charcoal filters.



Lamp Replacement

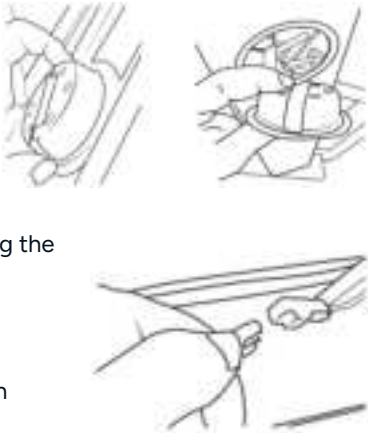
This rangehood requires two LED lamps for operation. If a lamp becomes faulty, it must be replaced with a compatible LED of the same specifications.

Warning:



- Turn off the electrical supply before performing any maintenance.
- The bulbs are not covered under warranty.
- Only use compatible replacement LED lamps to ensure proper function and safety.

Replacing the Lamps:

1. Press the release button and remove the screen filter.
2. From inside the rangehood, press the lamp outward to remove it from its socket.
3. Disconnect the lamp connectors from the existing bulb.
4. Connect the new lamp to the rangehood by attaching the connectors securely.
5. Insert the new lamp from the outside, ensuring it fits securely into the mounting hole.
6. Reinstall the screen filter according to the installation instructions.



Lamp Specifications

Max. power	Voltage	Size	ILCOS D code
2W	DC 12V	Round Ø70mm	CTH06-55 (D1)
			

Cleaning the Rangehood Surface

Stainless steel is durable and easy to maintain, but regular care is essential to preserve its appearance and performance. Follow these cleaning guidelines to prevent buildup and potential damage.

General Cleaning Tips:

- Use hot water with mild soap or detergent for routine cleaning.
- After cleaning, rinse with clean water and wipe dry with a soft, clean cloth to prevent watermarks.
- For stubborn stains or discoloration, use a non-scratching household cleanser or stainless-steel polishing powder with a damp soft cloth.
- If needed, gently scrub with a plastic scouring pad or soft-bristle brush, rubbing in the direction of the stainless-steel grain to avoid scratches.
- Do not use excessive pressure, as this may damage the surface.
- Avoid letting grease, dirt, or deposits accumulate for extended periods.

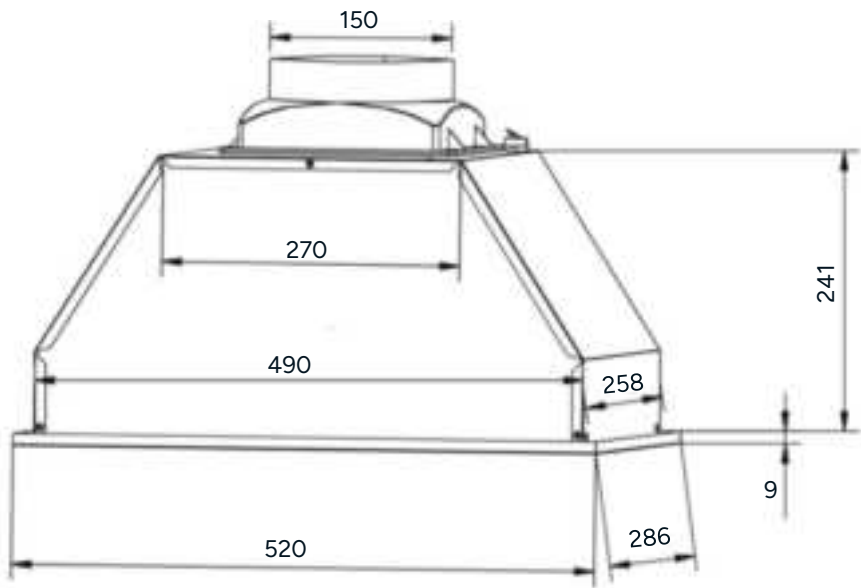
Precautions:

- Do not use steel wool or steel brushes, as small metal particles can embed in the surface and cause rust.
- Do not use harsh chemicals, including salt solutions, disinfectants, or bleach, as they may corrode stainless steel. If exposed, rinse thoroughly with water and wipe dry immediately.
- For painted surfaces, clean with warm water and mild detergent only to prevent damage.

Specifications

Rated Voltage	220-240V~
Rated Power Frequency	50Hz
Light Power	2×Max. 2W round LED lamp
Motor Power	1×200W or 1×300W
Diameter of Outlet Adapter	150mm
Lamps	
Normal LED lamp	CTH06-55 (D1)
Max wattage	2W
Voltage range	220V
Dimensions	Ø70mm

Dimensions



Notes

[illegible]

Need more information?

We hope that this user guide has given you the assistance needed for a simple set-up.

For the most up-to-date guide for your product, as well as any additional assistance you may require, head online to **help.Kogan.com**.

