

3-in-1 Smart Plug-in Floodlight for Wyze Cam V3

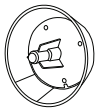
USER MANUAL



WASSERSTEIN

Thoughtful Products for your Smart Home

In the Box



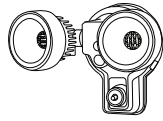
wall plate



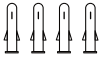
long screw



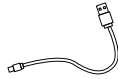
power adapter



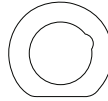
floodlight



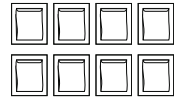
4 x wall anchors



USB cable



EVA gasket



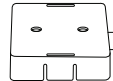
8 x cable clips



4 x screws



US, UK, EU plugs



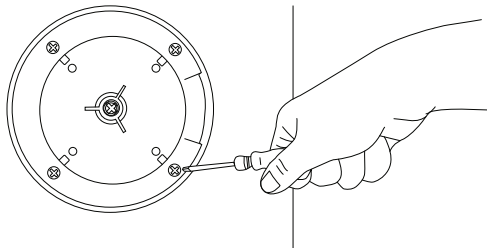
base attachment

Safety Information

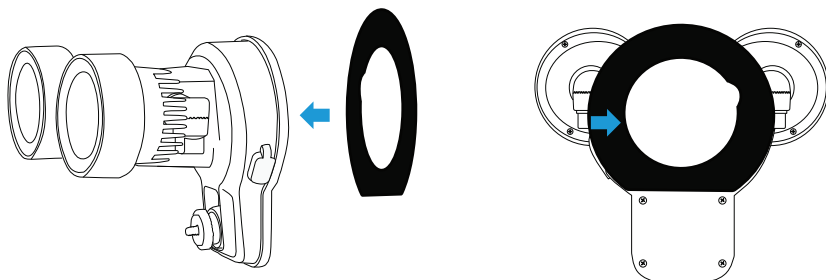
- DO NOT disassemble the floodlight. It may damage the internal components and not work properly.
- DO NOT remove the protective LED lens.
- DO NOT look directly at LEDs for any length of time.

Installing Your Floodlight

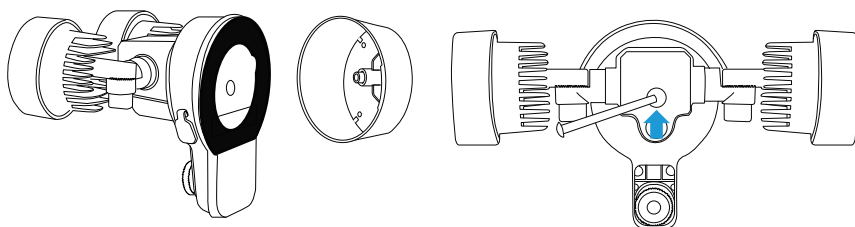
1. Install the wall plate using the 4 screws and wall anchors provided.



2. Remove the protective tape from the EVA gasket and press the adhesive side firmly against the rear of the floodlight.

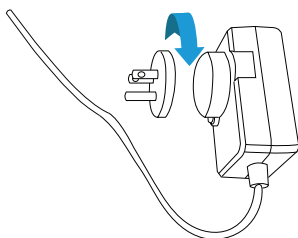


3. Mount the floodlight onto the wall plate and secure it with the long screw provided.



- 4a. Insert the appropriate plug into the power adapter. Turn clockwise until it clicks.

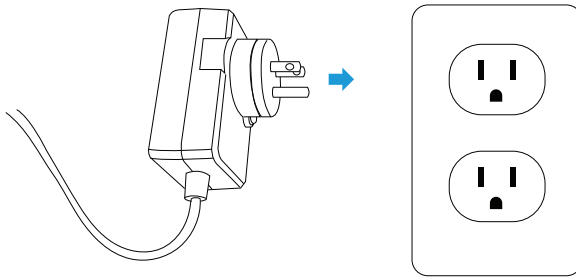
Note: 3 x plug heads are included (US, UK, EU).



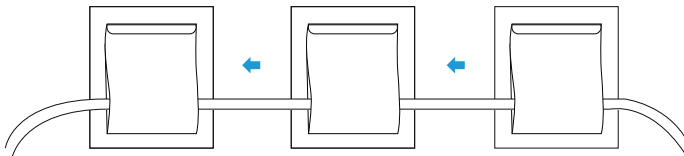
4b. Connect the floodlight cable to the adapter cable, then screw on the plastic cover.



4c. Plug the power adapter into the wall socket.

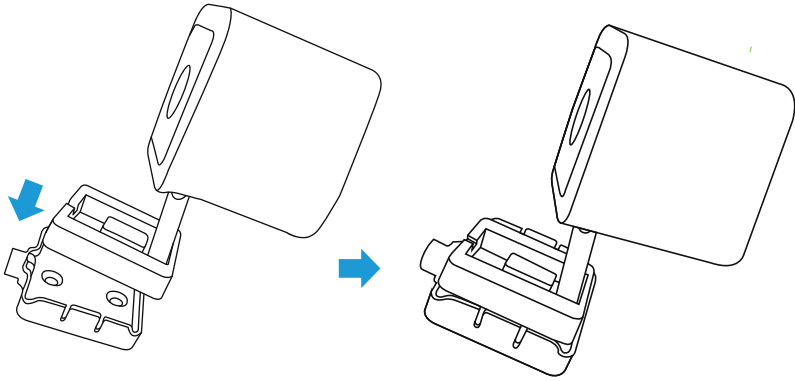


5. Peel off the covers from the back of the cable clips and stick them onto the wall. Then run the power adapter cable through the clips.

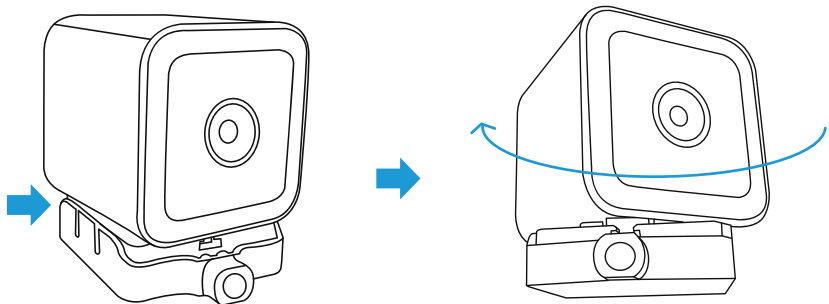


Mounting Your Camera

1. Connect the base attachment provided to the base of your Wyze Cam V3.

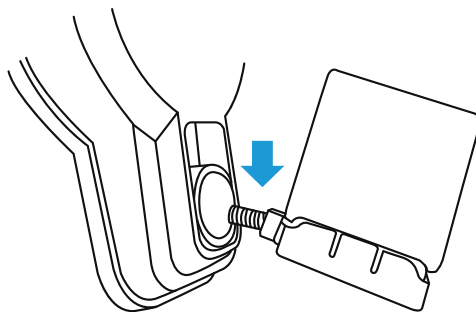


2. Slightly rotate your camera.

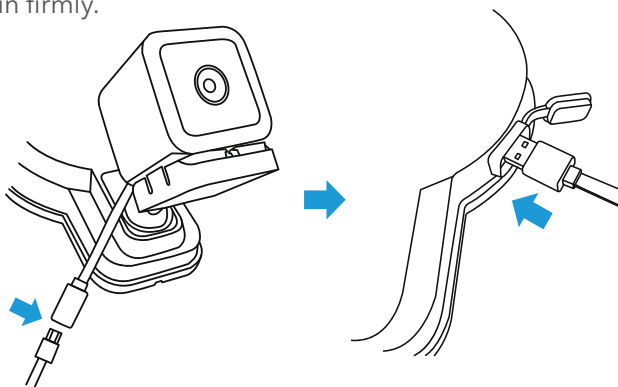


Note: To mount the camera facing downwards, turn the camera upside down after connecting it to the attachment.

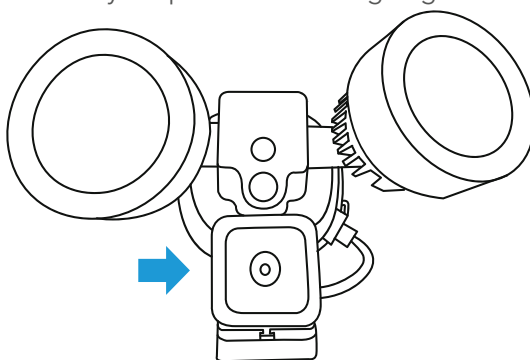
3. Attach the camera to the floodlight by screwing the attachment into the screw hole at the base of the floodlight.



4. Connect the micro USB cable to both the camera and the floodlight. Press both ends in firmly.



5. Adjust the camera to your preferred viewing angle.



Note: If you mount the camera upside down, remember to rotate the image 180° in the Wyze App.

App Setup

Minimum requirements:

- Smartphone or tablet running iOS 9.0 or later / Android 5.0 or later.
- 2.4 GHz WiFi Network (not compatible with 5 GHz connections).
- Upload speed of at least 2 Mbps.

1. Download the App by scanning the QR code or by searching "Wasserstein App" in Google Play Store or the App Store.



2. Sign up for a new account or log in to an existing account.
3. Click "Add Device" or "+" in the top right corner. You can add your device by selecting "Add Manually" or "Auto Scan".

Add Manually

1. Select "Lighting" - "PIR Light (BLE+Wi-Fi)".
2. Reset the floodlight by turning it on and off in the following sequence: on-off-on-off-on (steps also displayed in your App). Then, your floodlight will flash in intervals (Figure 1).

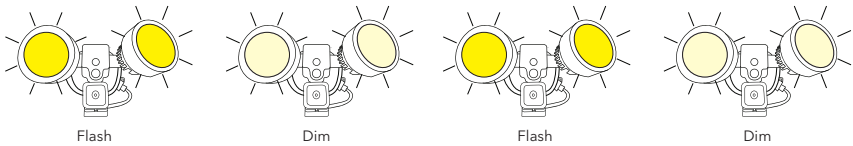
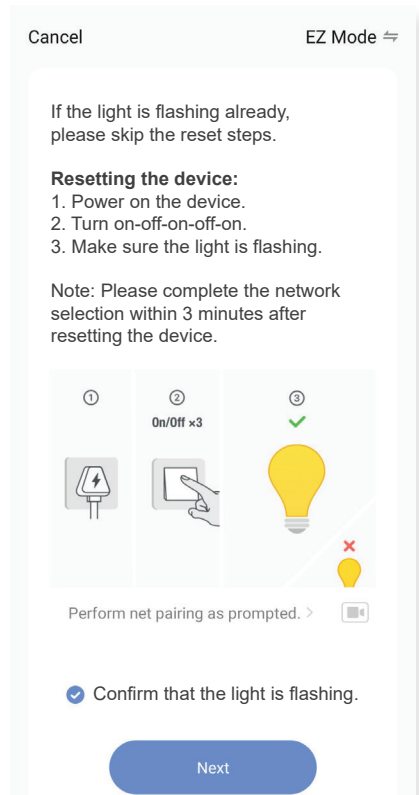
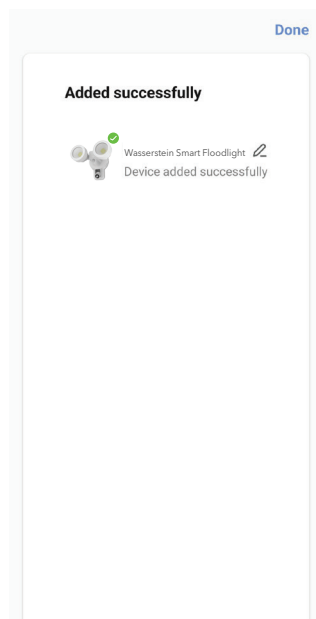
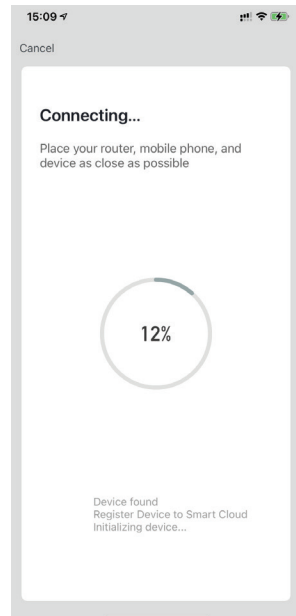
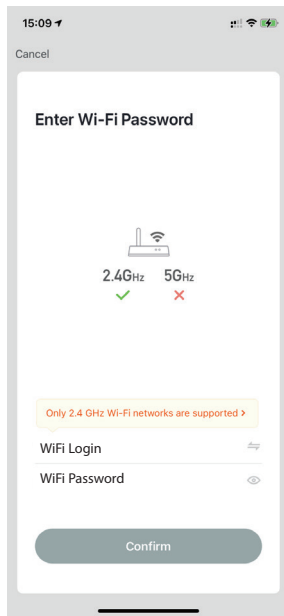


Figure 1

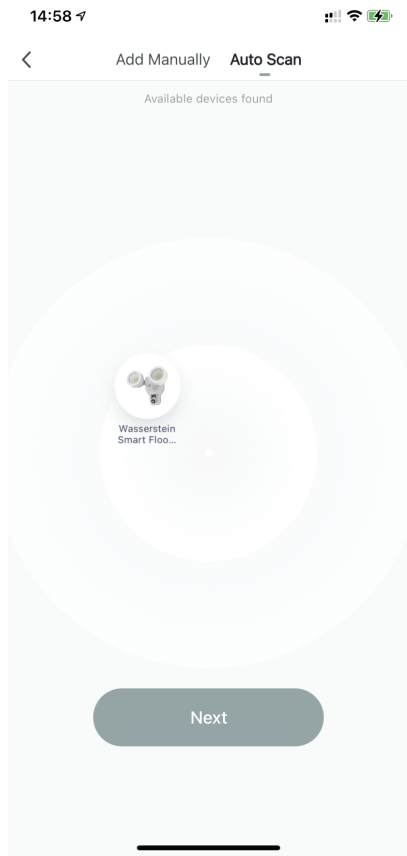


3. Enter your Wi-Fi details, and click "Confirm".
4. Wait until your device has been added successfully.



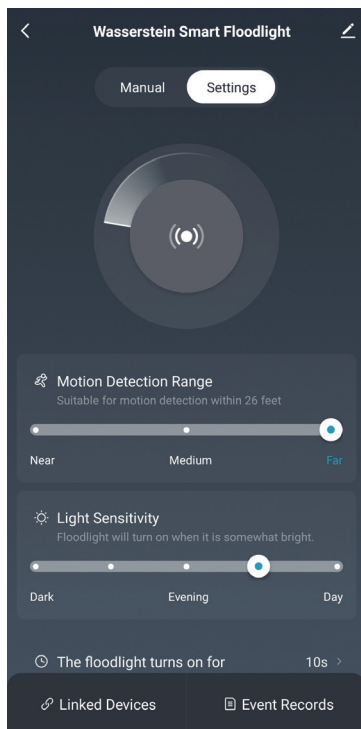
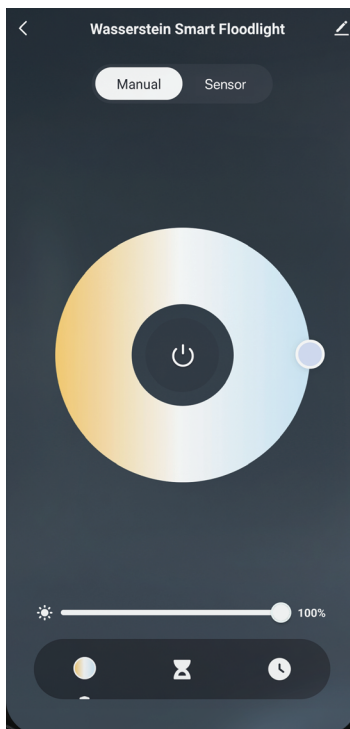
Auto Scan

1. Reset the floodlight to enable pairing mode. Turn on and off in the following sequence: on-off-on-off-on. Your floodlight will then flash in intervals.
2. Wait until your floodlight has been automatically detected.








App Functions

1. Settings



Note: Display and interface are subject to change.

Manual

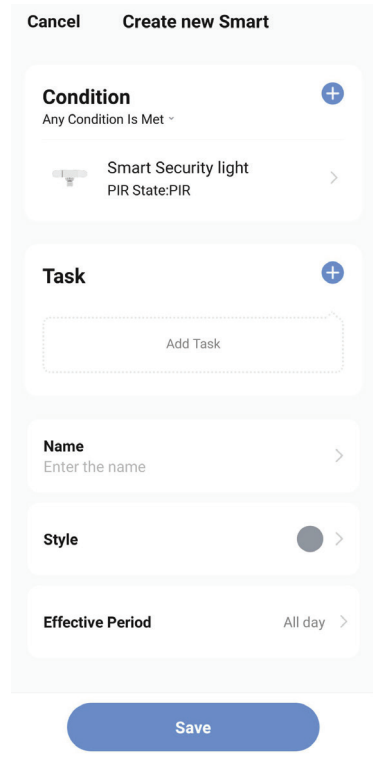
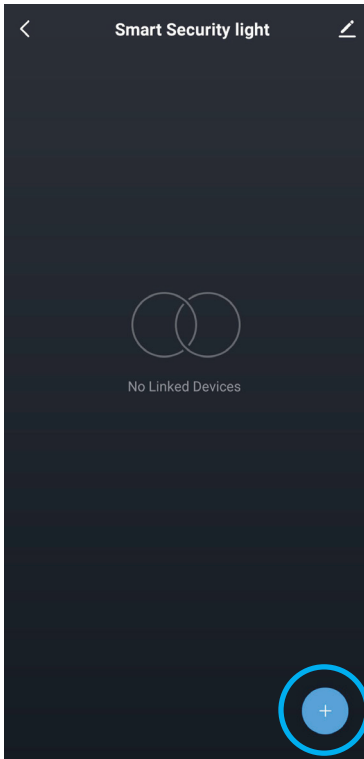
-  On/off
-  Light intensity
-  Floodlight color
-  Turn on/off timer
-  Schedule

Sensor

-  On/Off
-  Motion detection range
-  Floodlight light sensitivity
-  Duration of light flash
-  Event records

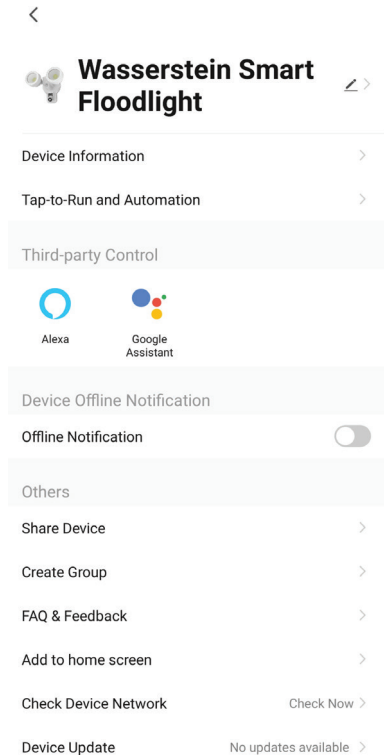
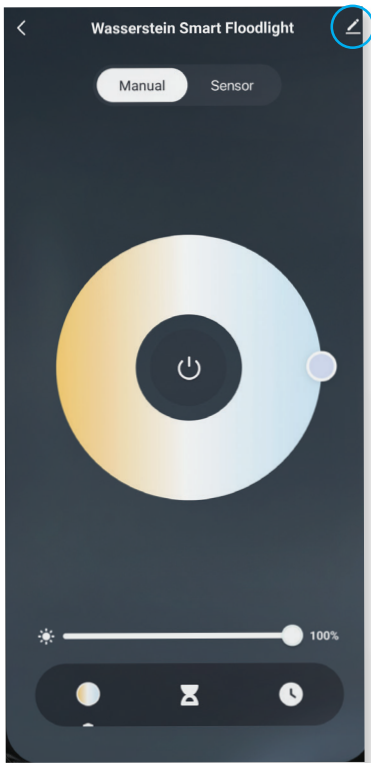
2. How to Use Linked Devices

On the 'Sensor' page click "Linked Devices", then click "+" on the lower right corner to enter the 'Create New Smart' page. Here, you can add multiple trigger conditions and tasks for your floodlight to perform.



3. Third-Party Control (Google Assistant & Amazon Alexa)

FAQ



Follow the instructions in the App to link to your Google Assistant, or Amazon Alexa. Examples of voice commands are also available in the App.

1. The smart floodlight will not turn on. What's going on?

- Check the connection to your home power source.
- Set the floodlight to "Manual" mode and try turning it on manually.
- Set the light sensitivity to "Day" and see if you can trigger it by moving. Remember to reset the light sensitivity to your preference after testing.
- Make sure the App is installed and paired correctly with your Smart Floodlight.
- Make sure your Wifi network is in 2.4 GHz, not 5 GHz.

2. Will the floodlight turn on during the day?

Yes, to turn on your floodlight during the day, set it to "Sensor" mode and adjust the light sensitivity to "Day". Or, set to "Manual" mode and you can turn on your floodlight manually, whether it is day or night.

3. Is a solar panel recommended, or will the plug-in floodlight keep the camera charged?

A solar panel is not recommended. The power adapter will keep the floodlight powered continuously.

4. After installing the floodlight, how can I confirm that it is working?

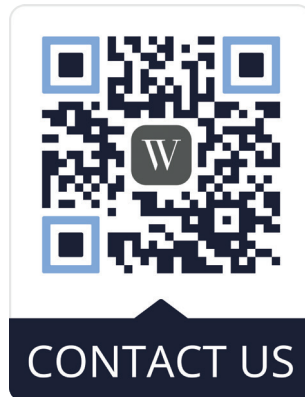
Set it to "Manual" mode, you can turn it on or off whether it is day or night. Set it to "Sensor" mode and adjust the light sensitivity to "Day". You can test to trigger it by moving. Remember to reset the light sensitivity to your preference after testing.

Specifications

| | |
|--------------------------|-------------------------|
| Materials: | PC + Aluminum |
| Sensor angle range: | 120° |
| Sensor thresholds: | 13 to 33 ft (4 to 10 m) |
| Max LED light intensity: | 1500 lumens |
| Color temperature: | 3000 - 6500 k |
| Power: | 100 - 240 AC 50/60 Hz |
| Frequency: | 2.4 GHz |

Get More Support

Scan the QR code below or email us at contact@wasserstein-home.com.



Wyze Cam V3 not included.
Wyze Cam V3 is a trademark of Wyze Labs, Inc.
Wasserstein is not affiliated with Wyze Labs, Inc.
Wasserstein is a trademark of Dropcases Ltd.

W
WASSERSTEIN

www.wasserstein-home.com

Made in China