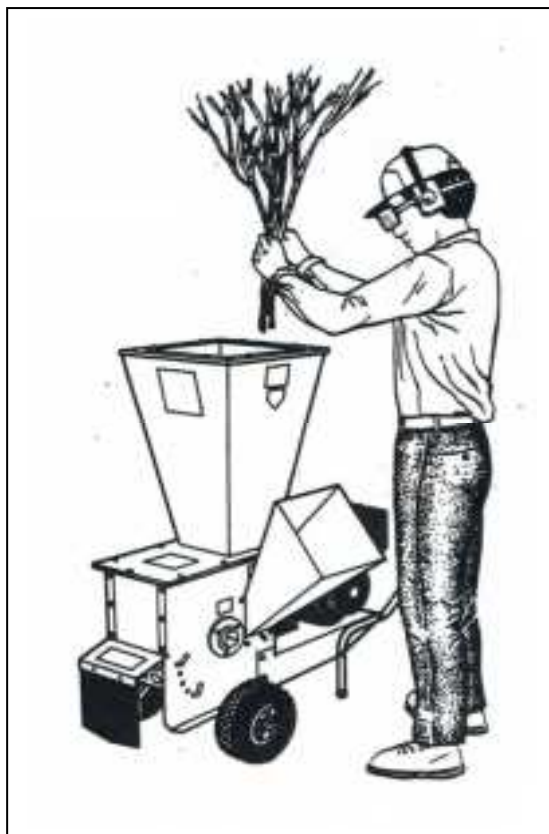


# OWNERS MANUAL



**READ THIS OWNER'S MANUAL BEFORE ATTEMPTING TO  
ASSEMBLE AND OPERATE THE CHIPPER/SHREDDER.**

# INDEX

<b>GENERAL PRECAUTIONS AND INSTRUCTIONS FOR USE OF CHIPPER/SHREDDER .....</b>	<b>3</b>
<b>TRAINING .....</b>	<b>3</b>
<b>PREPARATION .....</b>	<b>3</b>
<b>OPERATION .....</b>	<b>4</b>
<b>MAINTENANCE AND STORAGE .....</b>	<b>5</b>
<b>UNPACKING THE UNIT .....</b>	<b>6</b>
<b>ASSEMBLING THE UNIT .....</b>	<b>6</b>
<b>CHIPPER/SHREDDER OPERATION .....</b>	<b>7</b>
<b>SETTING UP FOR OPERATION .....</b>	<b>7</b>
<b>CHIPPING WOOD .....</b>	<b>8</b>
<b>CHANGING DISCHARGE SCREEN .....</b>	<b>10</b>
<b>MAINTENANCE, ADJUSTMENT AND TROUBLESHOOTING.....</b>	<b>12</b>
<b>USE AND CARE OF PTO CHIPPER/SHREDDER .....</b>	<b>13</b>
<b>PTO CHIPPER/SHREDDER MAINTENANCE .....</b>	<b>15</b>
<b>WARRANTY INFORMATION .....</b>	<b>16</b>
<b>PERIOD OF WARRANTY COVERAGE .....</b>	<b>16</b>
<b>WARRANTY SERVICE.....</b>	<b>16</b>
<b>WARRANTY COVERAGE, CONDITIONS, EXCLUSIONS, AND LIMITATIONS.....</b>	<b>17</b>
<b>SPARE PARTS &amp; DECALS.....</b>	<b>18</b>
<b>CHIPPER SHREDDER DECAL SHEET PART 1 .....</b>	<b>19</b>
<b>CHIPPER SHREDDER DECAL SHEET PART 2 .....</b>	<b>20</b>

# **GENERAL PRECAUTIONS AND INSTRUCTIONS FOR USE OF CHIPPER/SHREDDER**

## **TRAINING**

- READ THIS MANUAL PLUS THE ENGINE MANUAL BEFORE ASSEMBLING AND OPERATING THIS BCS CHIPPER/SHREDDER.
- This unit is designed for operation by properly instructed adults only. Make sure that any person operating this equipment has read these manuals.
- DO NOT LET CHILDREN OPERATE THE CHIPPER/SHREDDER.
- KEEP THE OPERATING AREAS CLEAR OF PEOPLE AND ANIMALS. BE CAREFUL THAT CHILDREN DO NOT COME NEAR.
- Do not operate this equipment in enclosed areas, Engine exhaust contains carbon monoxide. Carbon monoxide is an odorless, deadly poisonous gas.
- Do not allow hands to enter the Shredder hopper or the Chipper feed chute when the engine is running or the Chipper/Shredder shaft is rotating. When necessary to put hands and fingers into any opening of the unit, shut down engine, disconnect spark plug wire and wait until all movement stops. Check paint mark on the shaft of model DM 100 Chipper/Shredder to be sure there is no movement.
- When storing the unit or leaving it unattended, make sure the engine cannot be started by disconnecting the spark plug wire from the spark plug.

## **PREPARATION**

The following body protection should be worn during operation of the Chipper/Shredder:

1. Wear snug-fitting clothing that protects body surfaces, and allows freedom of movement without being baggy. Never wear ties, scarves or jewelry that could be caught in the machine.
2. Wear hearing protection.
3. Wear eye protection goggles marked "Z87" (for ANSI Standard ZB7.1).
4. When working in strong sunlight, protect yourself with appropriate clothing and apply a sun block to exposed areas of skin. Wear sunglasses under the safety goggles.

Take the following precautions for the safe storage and handling of gasoline fuel:

1. Keep fuel in approved, properly labeled fuel containers.
2. Do not store fuels or fueled units in closed (unventilated) areas, or in garages or shops connected to living quarters. Do not store fuel or fueled units where there are flames or sources of sparks such as electrical appliances and switches.
3. Obey all local regulations for the storage and handling of fuel.
4. Do not smoke when fueling, or fuel where fumes could be ignited by fire or sparks.

5. Do all fueling outdoors over non-flammable surfaces. If fuel is spilled on the unit, wipe the unit dry and properly dispose of the wiping rag. ALWAYS MOVE THE UNIT AT LEAST 10 FEET (3 meters) from the fueling spot and fuel supplies before starting the engine.
6. Always remove the engine fuel cap very slowly to equalize tank pressure and avoid fuel spurting out. Keep your face and eyes away from the tank while loosening the cap.
7. Do not fuel a running or hot engine. Do not loosen the fuel cap until the engine has stopped. Then wait several minutes for the engine to cool before pouring fuel.

Operate the Chipper/Shredder only on a level surface. Do not operate the unit on paved or gravel surfaces.

Before starting, check that all screws, nuts, bolts and other fasteners are properly secured

## OPERATION

All chute safety covers and hand stops, deflectors and feed chutes must be in proper position. Do not operate if any safety devices or fastening parts are missing from the unit.

Before starting make sure that the grinding chamber contains no foreign objects that could interfere with operation or eject from the intake openings at high speed.

Operate only when there is good visibility. Do not operate at dusk or at night.

Do not let hands or any other part of your body, or your clothing, enter either of the Chipper/Shredder intake openings, or go near the discharge opening unless the engine spark plug wire is disconnected and Chipper/Shredder shaft is not rotating.

The zone of operation is anywhere except on the discharge side or in front of the Chipper chute. Do not stand directly in front of the Chipper feed chute. Do not peer down into the Shredder hopper. Materials can be thrown back out of the intakes. Do not go on the discharge side of the unit during operation.

Allow engine to warm up. Then operate at maximum throttle speed setting. Never change the engine governor setting or over speed the engine to gain power.

Side branches should be lopped off to avoid clogging the hopper or chute.

DISCONNECT THE SPARK PLUG WIRE FROM THE SPARK PLUG TO ENSURE AGAINST ACCIDENTAL STARTING DURING ANY OF THE FOLLOWING OPERATIONS:

1. Repairs or adjustments to unit or engine.
2. Before transport or storage, or whenever you are going to leave the unit unattended.
3. Before removing a foreign object from the unit, or before starting cleaning, inspection or maintenance work.
4. If the machine starts to vibrate or suddenly run erratically. A poorly running unit should be inspected by an authorized BCS servicing dealer before further use.

Do not touch the engine when it is running or when surfaces are still hot from operation.

## MAINTENANCE AND STORAGE

Clean leaves, debris and fuel off the unit to avoid the possibility of fire.

Keep the unit in good working condition. Clean the unit at regular intervals, and check each time for loose or missing parts.

Do all items of maintenance explained in this Chipper/Shredder Owners Manual. Do not attempt disassembly or repairs not included in instructions from BCS or the engine manufacturer. Some adjustments and internal servicing of both engine and the BCS Chipper/Shredder should be done by BCS trained service personnel at an authorized BCS servicing dealer or distributor.

Shut down the engine immediately if a foreign object gets into the grinding chamber, or the unit suddenly makes loud noises or vibrates excessively.

When the Chipper/Shredder is stopped for servicing, inspection, storage or to change an accessory, make sure the spark plug wire is disconnected from the spark plug. Allow the machine to cool before making any inspections, adjustments, etc.

Allow the unit to cool before putting it away. Keep it out of the reach of children, and where sparks cannot ignite the gasoline fumes.

Do not store the unit with fuel in the system. Disconnect the fuel line at the carburetor inlet and drain the fuel into a fuel container. Then reconnect the fuel line. Start and run the engine until it stops from lack of fuel. Dispose of the drained gasoline safely.

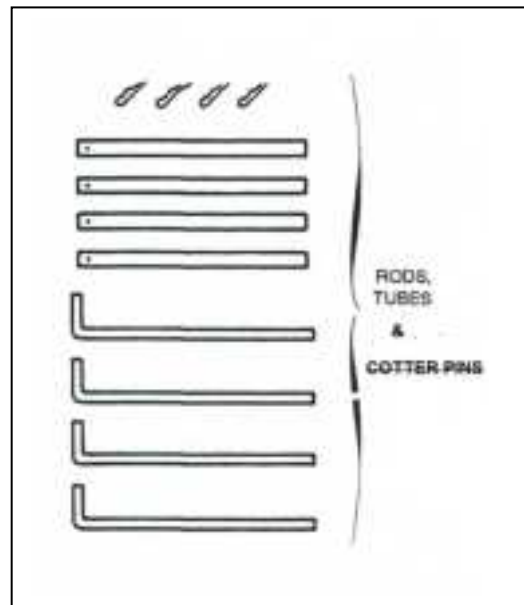
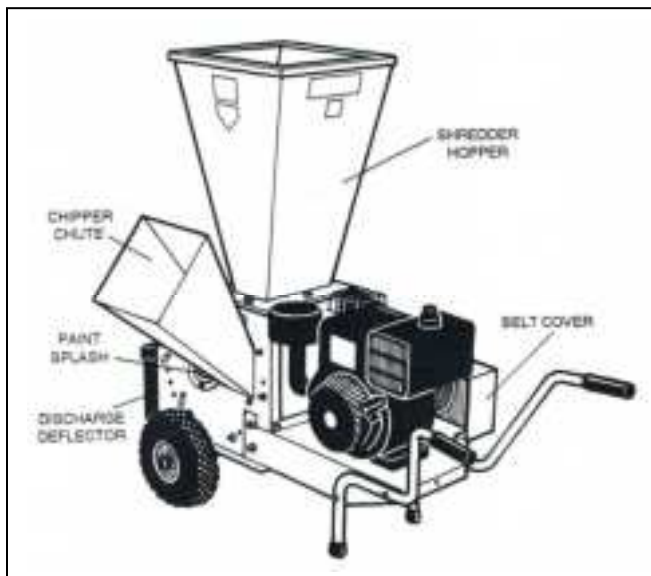
Store the cleaned and drained Chipper/Shredder in a well-ventilated place, protected from dampness and the weather.

## UNPACKING THE UNIT

1. Cut the straps and lift the cardboard box off the wooden skid base.
2. Remove the wheels.
3. Remove the packing material around the shredder hopper. Take the two handlebars, the bag of parts, the instruction package and the wheels and axle from the hopper.
4. Remove the package containing three rods and hairpins and five tubes. These parts are for optional use. They replace the curved discharge screen in the unit.
5. Free the unit from the wooden skid by pulling out the two nails.

## IMPORTANT

BEFORE ASSEMBLING THE UNIT, CHECK THE CONTENTS. NOTIFY THE SHIPPER OR DEALER IF THERE ARE ANY PARTS MISSING OR DAMAGED PARTS.



## ASSEMBLING THE UNIT

1. Lift the front of the unit off the wooden skid and put a block under it. Slide the axle under the base and put in position so that the holes on the axle are under the four holes in the base. Put a flat washer and an M8 hex-lock nut on each screw. Tighten all four nuts with a #13 wrench.
2. Slide the wheels part of the way onto the axles and then remove the block. Lift the engine end and walk the unit clear of the skid. Insert the cotter pins (from parts bag) on both sides of each wheel to hold the wheels in position.
3. Put a block under the engine end and place the handle bars over the threaded holes on each side of the base. Put washers on the M8 bolts and screw them into the base using a #13 wrench. Push the rubber grips over the handlebar ends.

4. Mount the Shredder hopper onto the unit. Slip a flat washer onto each of eight M8 x 20mm bolts. Drop the bolts through the eight holes in the hopper. Secure with a flat washer and M8 hex-lock nut on each bolt.
5. Mount the Chipper chute on the three studs surrounding the intake, on side of unit, and secure with flat washers and M8 hex-lock nuts.

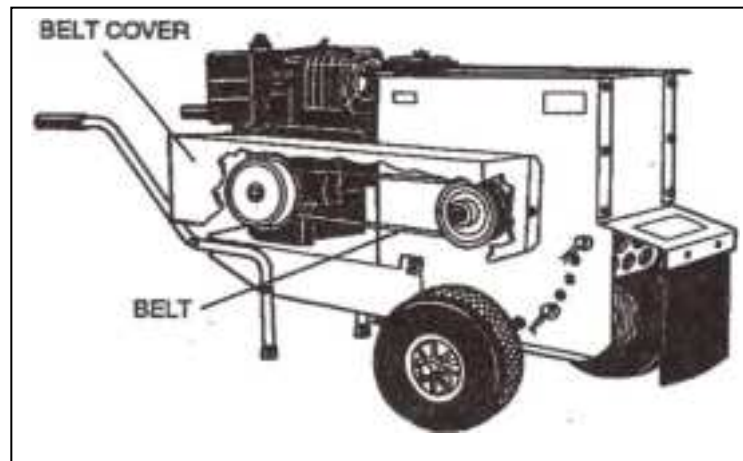
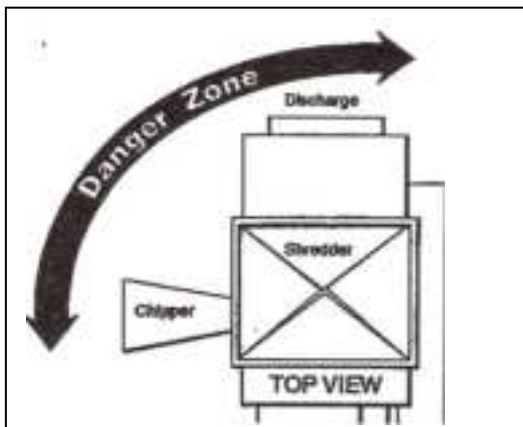
## CHIPPER/SHREDDER OPERATION

### SETTING UP FOR OPERATION

#### DANGER

**Material can be thrown out from both feed and discharge openings.**

1. Wear safety goggles and a hat.
2. Do not look into shredder hopper or place your head over it when the unit is running.
3. Do not go on the discharge side of the unit or directly in front of the Chipper chute.



1. The unit rests on rubber tires and bumpers, but should be further cushioned by setting it only on firm, level ground. Do not place it on paved or gravel surfaces. The unit may be placed on a blanket or tarp to catch the processed material.
2. Inspect the hopper before starting the engine. Reach under the belt cover, grasp and pull the belt from left to right to and check that the Chipper/Shredder shaft is turning freely.

#### WARNING

Inspect what you plan to feed into the hopper. Remove glass, metal, brick, stones, long or thick branches, or anything else that could damage the machine or fly out at high speed.

3. ALWAYS OPERATE THE CHIPPER/ SHREDDER AT FULL THROTTLE.
4. Chipping and shredding may be done simultaneously.

# CHIPPING WOOD



## **DANGER**

DO NOT PUT HANDS DOWN INTO THE CHUTE WHEN THE UNIT IS RUNNING.

- 1 Wood with a diameter of 3-3/4" can be fed through the Chipper chute.
- 2 Put the thickest end of the branch into the chute. Side branches must be bent to fit or lopped off. Try to find the right feed pressure being careful that it is not too much! Do not over feed the unit. Pull back when engine slows down and wait for its speed to resume before continuing to feed wood. The engine must maintain its speed under load in order to keep the centrifugal clutch fully engaged. Proper feed pressure and engine speed are important for the life of the unit.
- 3 NEITHER PULL OUT NOR PUSH IN the short pieces with your hands. Use the next log or branch to feed the short pieces through the Chipper each time. Short pieces sometimes feed themselves through the chipper but very often they are thrown out.

## **WARNING**

Do not go on the discharge side of the unit or stand directly in front of the intake chute when feeding the Chipper. Keep to one side of the chute.



# SHREDDING



## DANGER

Shredder grabs and pulls material down into the hopper with surprising speed. Do not wear rings, bracelets, jewelry, watches or any other items that could be caught by the material, drawing your hands into the Shredder. Hold the material very lightly. Do not force the material into the shredder. Gloves, when worn for shredding, should be large enough to slip off your hands if caught by the material.

## WARNING

Always shut down the engine and wait until all movement stops before clearing the hopper or discharge screen, and before removing the hopper to remove a blockage.

1. Be very careful about what you put into the hopper. The Shredder cannot handle cloth, string, plastics, glass, rubber, rocks or paving, brick, large wood chunks, metal, thick branches and long vines. Any material more than two centimeters (about  $\frac{3}{4}$ " ) thick can jam the Shredder.
2. Soggy soil, green garden wastes and wet grass clippings may need to be mixed with dry wood chips or leaves to avoid clogging the Shredder.
3. Preparation of the material may help in feeding it through the hopper. Cutting branches off stems, for example, helps the mass of material slide down the hopper walls. Adding too much material at a time can clog the works. Pushing thick weeds or branches into the hopper with force overfeeds the flails (knife blades) and jams the Shredder. Rods and tubes can replace the curved "Swiss cheese" screen for improved shredding of wet materials or finer chips (see "Changing Discharge Screen").
4. Cleaning the DM 100 discharge screen or clearing internal blockage requires temporary removal of the belt cover and the discharge screen. It may also be necessary to remove the hopper to remedy internal blockage. In order to remove objects between the Chipper hopper and the rotating parts it is necessary to remove the hopper assembly, which is held by eight sets of M8 x 20 bolts, lock washers and hex nuts.

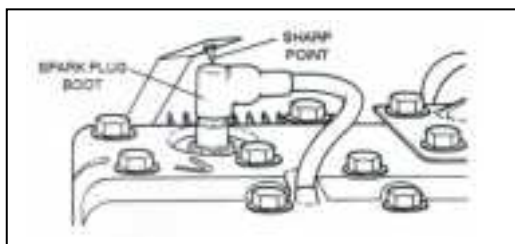
## CHANGING DISCHARGE SCREEN

### WARNING

The engine-grounding lever over the spark plug boot has a sharp point to penetrate the boot and ground the ignition. Be careful of this point when disconnecting the spark plug wire.

### WARNING

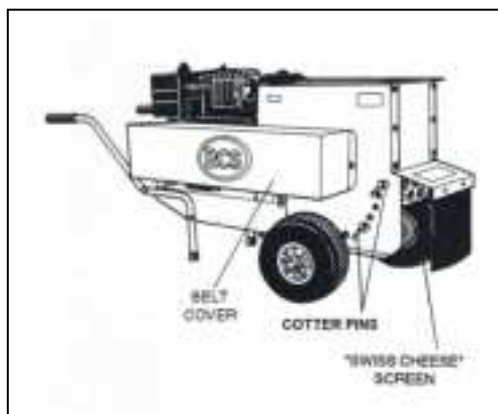
The DM 100 has a centrifugal clutch and the Chipper/Shredder shaft may continue to rotate silently after engine shut-down. After shutting down the engine, check the paint mark on the end of the Chipper/Shredder shaft to be sure the shaft has stopped rotating before you work on the unit.



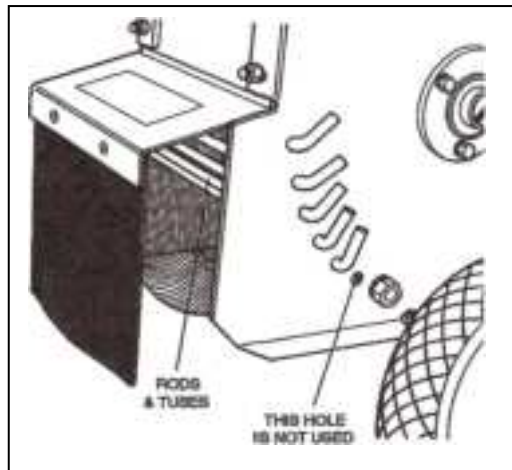
### IMPORTANT

THIS DISASSEMBLY ROUTINE SHOULD BE FOLLOWED TO REMOVE THE SCREEN EITHER FOR CLEANING OUT DEBRIS OR REPLACEMENT WITH RODS AND TUBES.

1. Shut off engine, disconnect the spark plug wire and wait for unit to stop rotating before starting to work.
2. Remove the belt cover, held in place by 2 M8 bolts, flat washers and hex nuts.



3. Look at the series of six holes on the chute side of the unit. Two of these holes have long rods running through the curved discharge screen to the back of the unit. Remove the cotter pins and slide the rods out. The curved screen will be replaced by five sets of rods and tubes in the next step.
4. The bottom hole of the series of six holes will not be used. Start with the rod in the top hole. Slip a . tube onto the rod and push the rod through the hole on the rear side (see figure at right). Lock in place with a cotter pin. Install the four other rods and tubes in the same manner, leaving the bottom hole empty.
- 5.



### **DANGER**

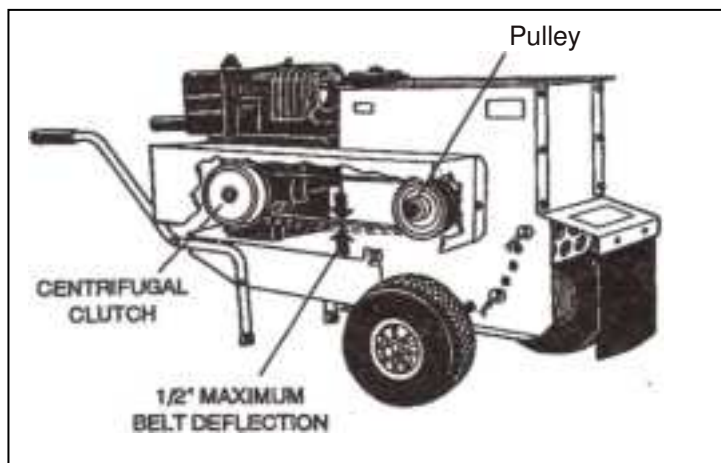
Do not use this Chipper/Shredder with the discharge unprotected. The discharge must be covered with either the rods and tubes or the standard screen.

# MAINTENANCE, ADJUSTMENT AND TROUBLESHOOTING

## WARNING

Shut off engine. Wait for the unit to stop and then remove the spark plug wire from the spark plug before working on the unit  
Keep fuel or the fueled engine away from flame or sparks.

1. Wipe exterior of the unit clean after each use. Check for loose or missing parts.
2. Clean out the hopper and the discharge screen before using the unit.
3. Do not remove the spark plug unless there is trouble starting the engine. If so replace with a new plug with the correct gap.
4. If a new spark plug does not resolve the problem, drain the fuel tank and safely dispose of fuel, which may not be fresh. Fill the tank with fresh gasoline and try starting engine.
5. If the engine still does not start even with a new spark plug and fresh gasoline, consult the operator's manual supplied by the engine manufacturer.
6. If the Chipper/Shredder output (volume) drops off while the engine is running at working speed, check the tension of the drive belt. Belt should be tight enough to prevent slippage but not so tight that it will fray (see drawing). To increase belt tension loosen the four engine mounting bolts and pull the engine back and then tighten the bolts.
7. If tightening the belt does not restore proper Chipper/Shredder volume, the centrifugal clutch may be worn and slipping. Contact your BCS servicing dealer or authorized distributor to have this checked.
8. Do not leave fuel in the unit for longer than one month. When storing the unit, disconnect the fuel line at the carburetor inlet and drain the fuel into an approved fuel container. Reconnect the fuel line, start the engine and run it until it stops from lack of fuel. Dispose of the gasoline safely. Store the unit in a well-ventilated place, protected from humidity and weather.



## USE AND CARE OF PTO CHIPPER/SHREDDER

Be sure to read the BCS Chipper/Shredder Owner's Manual, which comes with the unit, and obey the safety labels on the BCS Tractor and on the Chipper/Shredder attachment.

This unit reduces thick branches to chips and pulverizes lawn and garden waste for use as mulch or to add to your compost pile. Careless or improper use can be very dangerous.

Always wear safety goggles of the type specified by ANSI Safety Standard Z87, and a hat.

Work gloves may be worn when feeding the Chipper but not when feeding the Shredder because they can pull your hands into the hopper if they are caught by the material.

Remove jewelry or clothing articles which could be caught by the material and pulled into the machine.

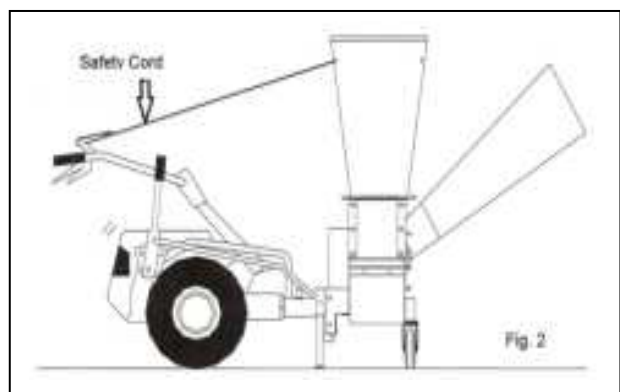
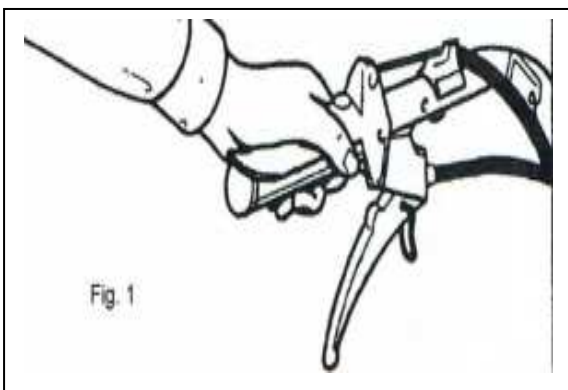
Set the machine on firm ground but not on gravel, concrete, brick or other surfaces which provide no cushion.

### **DANGER**

Do not start engine if there is material in the Shredder. Shut off the engine and disconnect the spark plug wire before cleaning a jammed hopper, changing screens or performing any maintenance or service.

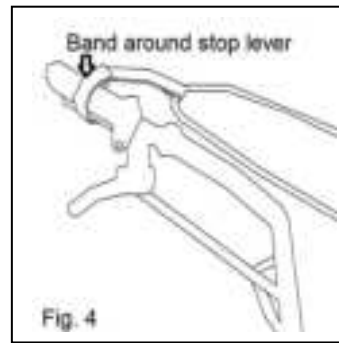
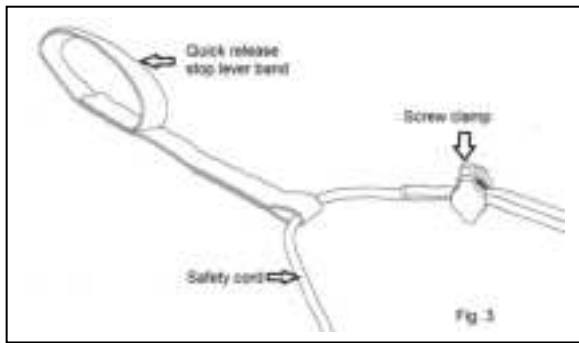
To start the engine put the unit in neutral, pull and latch the clutch and hold down the emergency stop lever.

When ready to operate engage the PTO and release the clutch while continuing to hold down the emergency stop lever (see drawing 1).



A special safety cord (see Fig. 2) can be used to hold the stop lever when the operator is not standing near the controls. Pulling the cord in an emergency immediately releases the stop lever and stops the machine.

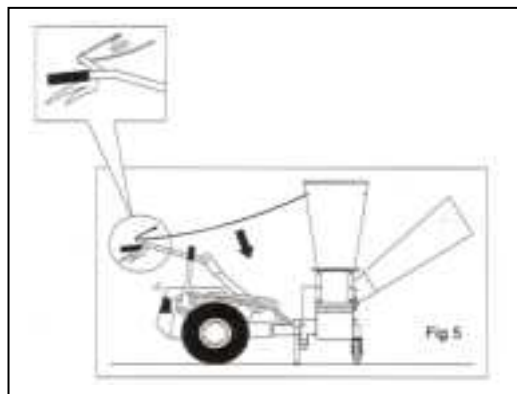
The cord must be placed around the hopper and tightened on the handle side around the cultivator controls so that it holds the stop switch (Fig.3 and 4).



To connect the cord properly, adjust the screw clamp to get the correct tension (Fig. 3).

You can now move away from the controls and load the hoppers with material without risk as you can pull the safety cord at any time to stop the machine.

To stop the power takeoff instantly, pull sharply downwards on the cord to detach the band holding the brake release. This stops rotation of the power takeoff and the chipper / shredder (Fig. 5).



Be careful what you put into the Shredder hopper. The machine can shred most organic materials, however, objects of certain shape, size, or texture may cause problems even if they are organic.

The Shredder cannot handle thick branches or large chunks of wood. Neither Shredder nor Chipper can handle cloth, string, glass, rubber, metal, rocks or paving materials, or long vines.

Soggy soil, green garden wastes and wet grass clippings can be processed through the Shredder by mixing dry leaves or wood chips with the wet material.

For better processing of wet materials the standard curved screen with the "Swiss cheese" holes should be replaced by the set of five rods and tubes, which are supplied with the unit.

## DANGER

Do not use this Chipper/Shredder with the discharge unprotected. The discharge must be covered with either the rods and tubes or the standard screen.

## IMPORTANT

Always disengage the PTO before stopping the engine. If the PTO remains engaged the inertia of the Chipper / Shredder will drive the engine and may restart it.

After shutdown, always check the paint mark on the drive shaft (near Chipper chute) to be sure that the Chipper/Shredder is no longer rotating.

## **PTO CHIPPER/SHREDDER MAINTENANCE**

- 1 Clean out the hopper before each use.
- 2 Clean the exterior at regular intervals, and apply a light oil or wax to prevent rust.
- 3 Shaft bearings are sealed, self-lubricating and require no maintenance.
- 4 Check all screws, bolts and other fasteners frequently and tighten if loose.

Replace missing or worn parts. See the illustrated parts list in your Chipper/Shredder Owner's Manual for parts information.

# **WARRANTY INFORMATION**

## **Limited Warranty**

### **PERIOD OF WARRANTY COVERAGE**

#### **Personal, Family, or Household**

The BCS No-Time-limit Warranty is available on units sold from Sept 1992 and beyond to the original owner. The BCS No-Time-Limit Warranty applies to all transmission components. This will include all components located inside the transmission housing excluding the clutch assembly and PTO coupling.

BCS Chipper/Shredders and all remaining parts on BCS tractors and attachments are warranted for a period of three (3) years from the date of purchase.

All engines (Acme, Honda, Kohler, Briggs & Stratton, and Lombardini) are covered by a separate warranty issued by the individual engine manufacturers. Please refer to the engine warranty for details.

#### **Commercial, Professional, and Rental Use**

BCS tractors and attachments are warranted for a period of one (1 ) year from the date of purchase.

All engines (Acme, Honda, Kohler, Briggs & Stratton and Lombardini) are covered by a separate warranty issued by the individual engine manufacturers. Please refer to the engine warranty for details.

### **WARRANTY SERVICE**

For warranty service, return the defective BCS product together with proof of date of purchase and the serial number of your BCS product to an authorized BCS servicing dealer or BCS factory recommended service station. Transportation of your BCS product to and from the place where warranty service is performed shall be at your expense and risk.

See the yellow pages or call (800) 543-1040 for the name and address of the BCS servicing dealer or service station near you. You may also obtain warranty information by writing:

BCS America LLC.  
1331 Tandem Ave NE  
Salem, OR 97301



## **WARRANTY COVERAGE, CONDITIONS, EXCLUSIONS, AND LIMITATIONS**

BCS agrees to cover the cost of parts and a specified labor for any repair from a failure that was caused in the judgment of BCS to be a defect in materials or workmanship.

This warranty is given to the first retail purchaser (other than for purposes of resale) only and is not transferable. This warranty does not cover damage resulting from other than defects in material or workmanship, or damage caused by unreasonable use including the failure to provide reasonable and necessary maintenance as prescribed in your BCS owner's manual.

This warranty does not cover tune-ups or replacement on non-defective parts that may wear out with reasonable use within the warranty period which may require replacement in connection with normal maintenance, such as, by way of example, tiller tines, lawn mower blades, clutches, and control cables.

In addition, this warranty does not cover repairs performed due to neglect, abuse or use of the equipment other than the application it is designed for.

This warranty is void if the serial number of your BCS machine is removed or defaced or if service for defects covered under this warranty is performed by other than an Authorized BCS Servicing Dealer or BCS Factory Recommended Service Station.

This warranty applies only to BCS machines sold within the United States of America and Canada.

THIS LIMITED WARRANTY IS IN LIEU OF ALL OTHER EXPRESS WARRANTIES. ANY IMPLIED WARRANTY OF FITNESS FOR A PARTICULAR PURCHASE, MERCHANTABILITY- OR OTHERWISE. APPLICABLE TO THIS PRODUCT, SHALL BE LIMITED IN DURATION TO THE DURATION OF THIS LIMITED WARRANTY. BCS SHALL NOT BE LIABLE FOR ANY SPECIAL, INCIDENTAL OR CONSEQUENTIAL DAMAGES, WHETHER BASED ON LOST GOODWILL, LOST PROFITS, WORK STOPPAGE IMPAIRMENT OF OTHER GOODS OR OTHERWISE.

SOME STATES DO NOT ALLOW LIMITATIONS ON HOW LONG ANY IMPLIED WARRANTY LASTS SO THE ABOVE LIMITATION MAY NOT APPLY TO YOU. SOME STATES DO NOT ALLOW THE EXCLUSION OR LIMITATION OF INCIDENTAL OR CONSEQUENTIAL DAMAGES, SO THE ABOVE LIMITATION OR EXCLUSION MAY NOT APPLY TO YOU.

This warranty supersedes any other warranty on your BCS machine, including any warranty contained in your owner's manual.

This warranty gives you specific legal rights, and you may also have other rights which vary from state to state.

This warranty is given by BCS America LLC., 1331 Tandem Ave NE, Salem, OR 97301  
Phone: (800) 543-1040.

# **SPARE PARTS & DECALS**

# Chipper Shredder Decal Sheet Part 1

581.27445



## Chipper Shredder Decal Sheet Part 2

581.27445

### OPERATING INSTRUCTIONS

1. READ SAFETY AND OPERATING INSTRUCTIONS IN THE OWNER'S MANUAL BEFORE OPERATING THE UNIT.
2. KEEP HANDS, FEET, FACE, CLOTHING, CHILDREN AND PETS AWAY FROM INTAKE CHUTES, DISCHARGE AREA, AND MOVING PARTS.
3. USE APPROVED SAFETY GLASSES AND GLOVES. AVOID WEARING LOOSE FITTING CLOTHES.
4. IF UNIT JAMS, TURN OFF ENGINE AND WAIT FOR ALL MOVING PARTS TO COME TO A COMPLETE STOP. USE A WOODEN STICK TO CLEAR THE JAM. DO NOT PUT YOUR HANDS INSIDE THE CHUTE OR DISCHARGE.
5. **DO NOT:** OPERATE WITHOUT ALL PROTECTIVE DEVICES AND SHIELDS IN PLACE.
6. **DO NOT:** USE HANDS TO CLEAN DISCHARGE AREA OR REMOVE BLOCKAGES.
7. **DO NOT:** INSTALL RODS OR SCREEN, OR DO MAINTENANCE WHILE UNIT IS RUNNING.
8. **DO NOT:** OPERATE ON UNEVEN GROUND, UNPAVED OR GRAVEL SURFACES.
9. **DO NOT:** OPERATE IN AN ENCLOSED AREA - EXHAUST FUMES CAN BE DEADLY.

FAILURE TO FOLLOW THESE INSTRUCTIONS MAY RESULT IN SERIOUS INJURY OR DEATH.

### WARNING

**DO NOT START ENGINE UNLESS  
BELT COVER IS IN PLACE.**

Failure to comply could result in serious injury from moving belts and pulleys. See Owner's manual for detailed safety and maintenance instructions.



### DANGER

CUTTING BLADES CONTINUE TO ROTATE AFTER ENGINE STOPS. Be sure that blades have stopped completely to avoid serious injury.

### DANGER

ROTATING CUTTING BLADES. KEEP HANDS AND FEET OUT OF INTAKE CHUTES AND DISCHARGE AREA WHILE MACHINE IS RUNNING TO AVOID SERIOUS INJURY.

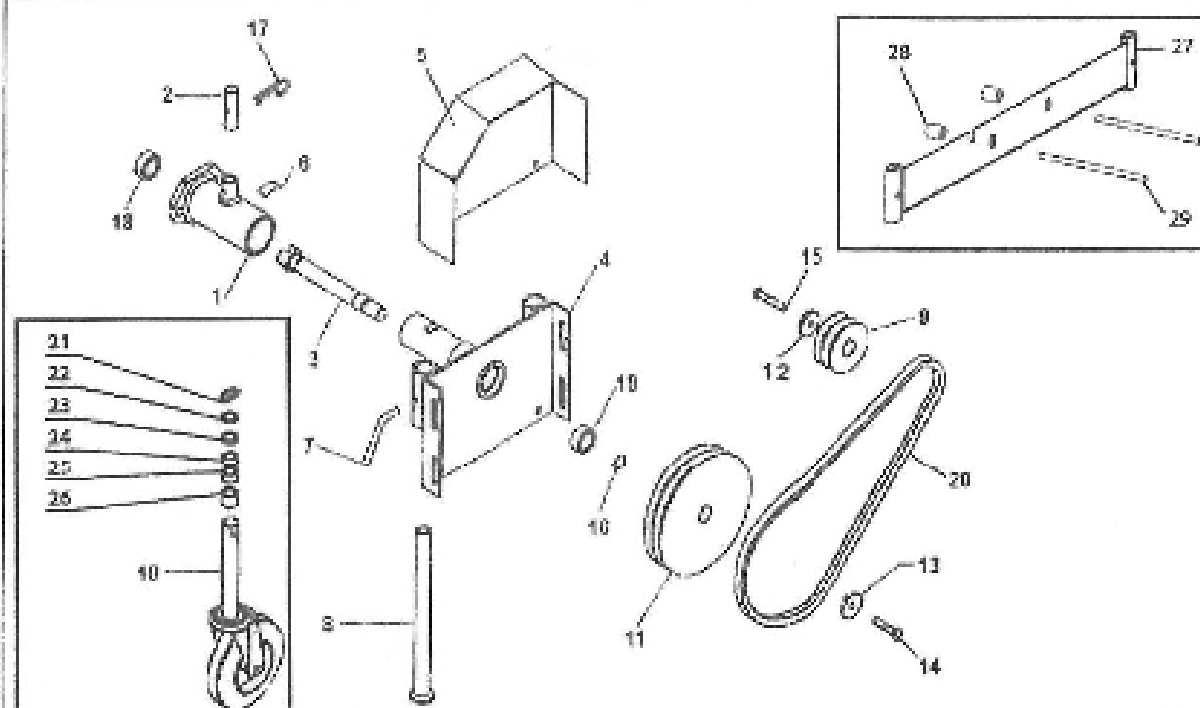
**NO HANDS BELOW THIS LINE**

**Chipper  
Shredder**

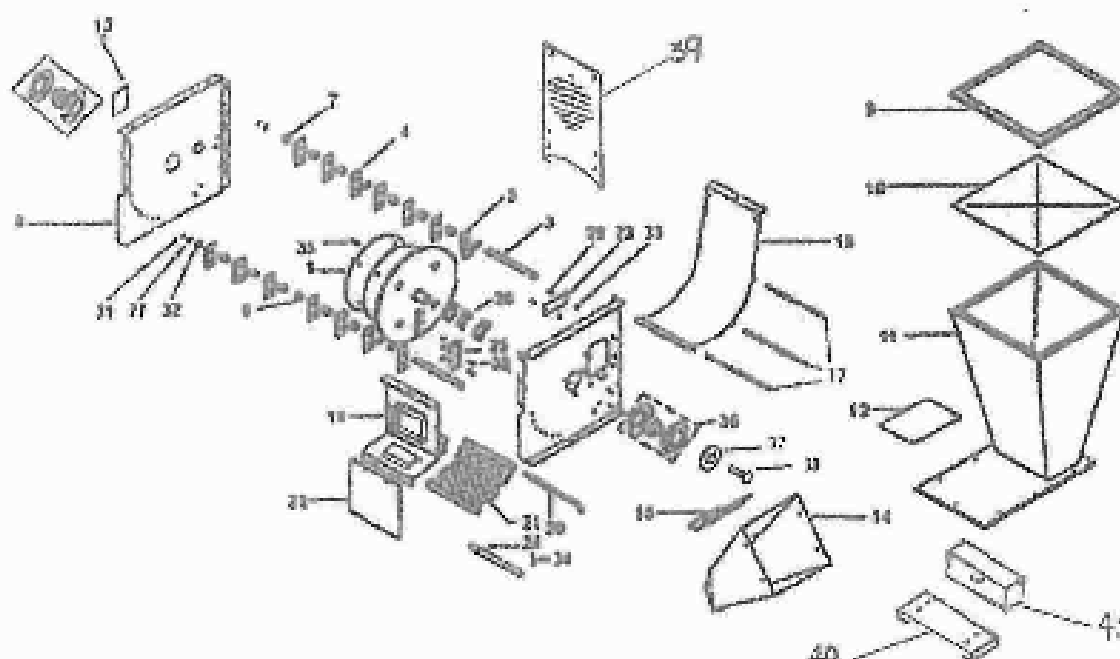
**DM100 - MTC VERSION**

**Serial Number Range**

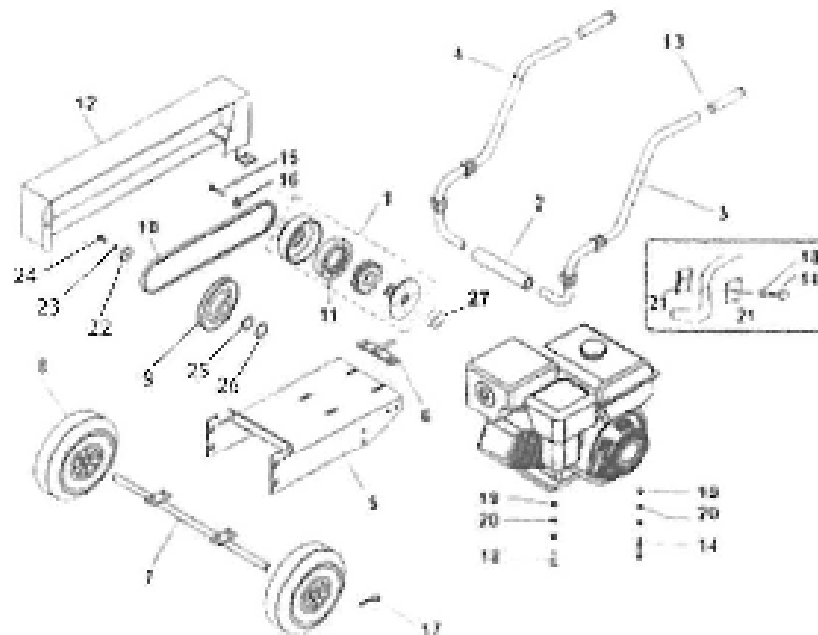
**03.00**



ID	PART NO	QTY	DESCRIPTION	ID	PART NO	QTY	DESCRIPTION
1	010201002	1	PTO ADAPTER FLANGE	11	013103003	1	PULLEY
2	010202000	1	PN	12	013500003	1	WASHER
3	010203000	1	PTO DRIVE SHAFT 3 DOG	13	013600000	1	WASHER
4	010204000	1	ADAPTER PLATE	14	500010010	1	BOLT
5	010700000	1	SHIELD	15	500012008	1	BOLT
6	010800000	1	DECAL	16	510011000	1	SNAP RING
7	011000000	4	LOCKING HANDLE	17	530031000	1	LYNCH PIN
8	011100000	2	STABILIZER LEG	18	540031000	1	BEARING
9	011200000	1	PULLEY	19	540032000	1	BEARING
10	B10057D	2	CASTER WHEEL ASSEMBLY	20	820032004	2	BELT
				21	413000002	2	SPRING PIN
				22	SRM203ZD	2	SPACER
				23	SRM204ZD	2	SPACER
				24	SRM205ZD	2	SPACER
				25	SRM206ZD	2	SPACER
				26	SRM207ZD	2	SPACER
				27	B10060VD	1	WHEELS SUPPORT
				28	B10197ZD	2	BUSH
				29	B10196ZD	2	SLEEVE



NO	PART NO	QTY	DESCRIPTION	ID	PART NO	QTY	DESCRIPTION
1	010101000	1	ROTOR	21	012000000	1	SCREEN
NI	010101801	1	ROTOR COMPLETE	22	012000000	1	SHIELD
3	010102000	4	SHAFT, HAMMER	23	013000000	1	BLADE, STATIONARY
4	010103000	26	HAMMER, STRAIGHT	24	013000000	6	SLEEVE
5	010104000	2	HAMMER, L-SHAPED	25	013000000	1	BLADE
6	010105000	18	SPACER	26	021100002	4	SHIM
7	010108001	12	SPACER	27	080009018	4	SHIM
8	010141000	1	PANEL	NI	208000000	1	
9	010300000	1	DEFLECTOR SUPPORT	28	600011058	2	BOLT
10	010302000	1	HOPPER FLAP	30	600012006	3	BOLT
11	010304000	1	HOPPER	31	510012000	4	CIRCLIP
12	010610000	1	DECAL	32	511120020	10	WASHER
13	011300000	1		33	620002008	3+2	NUT
14	011800050	1	CHIPPER CHUTE	34	630003000	5	COTTER PIN
15	011800051	1	SUPPORT PLATE, CHUTE	35	630004000	1	KEY
16	013000000	1	PANEL, BOTTOM	36	550002030	2	BEARING ASSEMBLY
17	012100000	3	SLEEVE	37	BIO 151 D	1	STOPPER
18	012200000	1	DISCHARGE DEFLECTOR	38	40100265	1	SCREW
19	012600001	1	PANEL	39	BIO228ZD	1	REAR COVER
20	012700000	5	ROD	40	BIO258VD	1	BOX SUPPORT
				41	428000004	1	PLASTIC BOX



ID	PART NO	QTY	DESCRIPTION	ID	PART NO	QTY	DESCRIPTION
1	013600000	1	CLUTCH COMPLETE	15	510000843	1	WASHER
2	013900001	1	RUBBER HOSE	17	520001000	4	LYNCH PIN
3	014300252	1	HANDLE BAR LH	18	520002510	2	BOLT M10X50 HONDA
4	014300253	1	HANDLE BAR RH	19	520007010	4	BLOCK M10 HONDA
5	014500001	1	DECK, ENGINE SUPPORT HONDA	20	530001800	6	WASHER M10 HONDA
6	014500005	1	BELT TENSIONER	21	013900008	8	BLOCK
7	014600000	1	AXLE, WHEEL	PLEASE NOTE THAT REF# 21 WAS ONLY USED ON A FEW EARLY UNITS. AFTER THAT REF# 21 WAS WELDED TO THE INDIVIDUAL HANDLE BARS.			
8	014700000	2	WHEEL				
9	B10217D	1	PULLEY				
10	014900056	1	BELT, HONDA				
11	019400000	1	CLUTCH RUBBER, STAR	22	B10231D	1	STOPPER
12	019700000	1	BELT SHIELD HONDA	23	40300002	1	WASHER
13	020903000	2	HANDLE GRIP	24	43100012	1	SCREW
14	500001050	2	BOLT M10X50 HONDA	25	40300076	1	SHIM 0.5
15	507160134	1	BOLT 7/16X 1.5" UNF HONDA	26	40300077	1	SHIM 1.0
				27	B10233D	1	CLUTCH SPACER