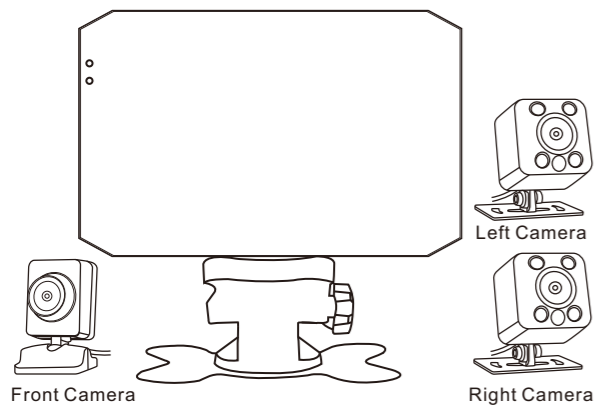


V7M Truck Dash Cam

User Manual V1.1



Thank you very much for purchasing the VSYSTO V7M dash cam.
Please read this manual carefully before use.

Safety Instructions

In order to use this product safely, please confirm that you fully understand the following.

WARNING: This section indicates that mishandling can have serious consequences.

Note: This section indicates that improper handling may cause injury to the user or damage the product.

	Prohibit		Obey
--	----------	--	------

WARNING	
	Please use this product under the premise of obeying traffic rules.
	Do not install the device in a position that blocks the view or obstructs driving.
	Do not disassemble or modify this product by yourself.
	Do not use accessories not included.
	Do not allow water to enter this product.

ATTENTION	
	If the product makes an abnormal noise or smell, please stop using it immediately.
	The waterproof rating of the left and right camera is IP67, and the front camera and recorder host is not waterproof.
	When disposing of this product, please follow the classification principle and do not discard it at will.
	Do not store this product in a high temperature and humid environment.

Button Description

- Up Button**
1. In the video recording state, short press the up button once to switch the camera mode.
 2. In the video recording state, long press the up button to enter the emergency recording mode. The emergency recording locked video filename is: KEY-xxxx.
 3. In the setting interface, short press the up button once to select the previous page.
 4. In the video playback interface, short press the up button once to select the previous video.
 5. When playing video, long press the up button to switch the video file of the front/left/right camera.

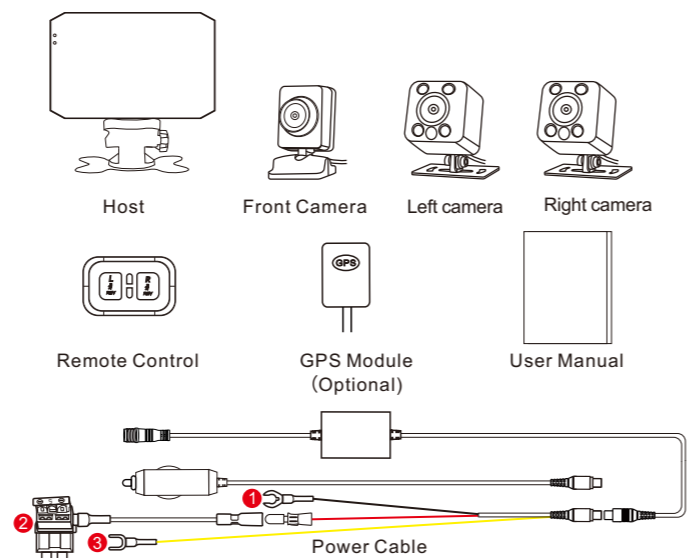
- OK Button**
1. In the video recording state, short press the OK button to pause recording.
 2. In the pause state of recording, long press the OK button to enter the menu setting interface.
 3. In the menu interface of recorder, select the recording icon and short press the OK button once. The recorder will exit the menu interface and return to the video recording interface.
 4. In the menu interface of recorder, select the playback icon and short press the OK button once. The recorder will enter video playback interface.
 5. In the menu interface of recorder, select the setting icon and short press the OK button once. The recorder will enter setting interface.
 6. In the menu interface of recorder, select the language selection icon and press the OK button once. The recorder will enter the language setting interface.
 7. In the video playback interface, select the video you want to play, and short press OK button to play the video.
 8. In the language setting interface, select the language you need, and short press the OK button to complete the language setting.
 9. In the setting interface, select the the function settings you want, and short press the OK button to complete the settings.
 10. In the setting interface, long press the OK button to return to the previous interface.
 11. In the video playback interface, long press the OK button to return to the previous interface.
 12. In the language setting interface, long press the OK button to return to the previous interface.

- Down Button**
1. In the video recording state, short press the down button to switch the camera mode.
 2. In the setting interface, short press the down button once to select the next page.
 3. In the video playback mode, short press the down button once to select the next video.

Features

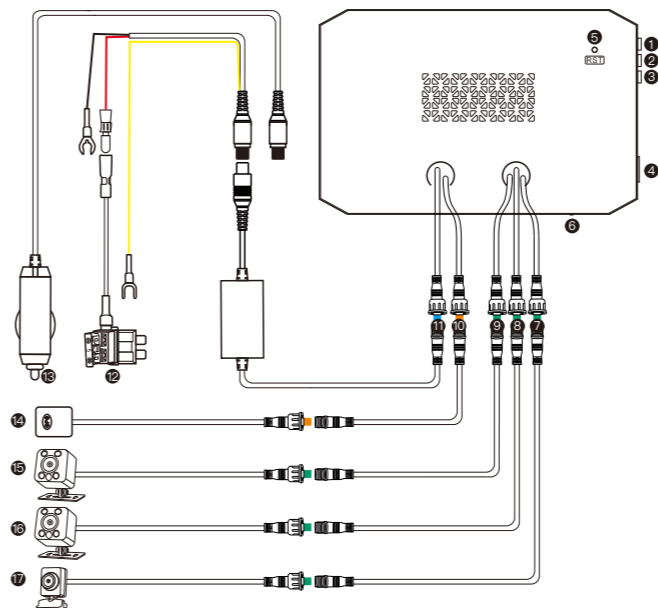
- Replace conventional lithium batteries with super capacitors for longer life and safer.
1. HD display screen.
 2. Support battery voltage display.
 3. Video can be recorded after inserting TF card.
 4. Built-in WiFi, can view real-time video on the dedicated APP.

Standard Accessories



- ① **Black GND** - Connect Ground (Ground refers to the negative pole of the iron sheet screw of the vehicle body.)
- ② **VCC** - Connect Constant Power (Constant power refers to the fuse that has been powered on after the vehicle is turned off.)
- ③ **ACC** - Connect Key switch (ACC refers to the fuse that has power after starting the vehicle, but has no power after flameout.)
- ※ Only the smart power cable supports the parking monitoring function. The car charger power cable does not support the parking monitoring function.
- ※ If there is any change of specification and appearance due to improvement, we are not able to inform you in advance. Please understand.
- ※ Please note that there are differences between the schematic diagram and the real object in the manual.
- "Optional" mean it is not a standard configuration. Please refer to the product description on the platform you purchased!

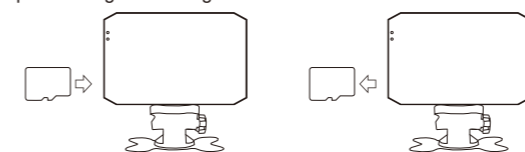
Description of Each Part



① Up Button	⑩ GPS Connector
② OK Button	⑪ Power Connector
③ Down Button	⑫ Smart Power Cable
④ Card Slot	⑬ Car Charger Power Cable
⑤ Reset Button	⑭ GPS Module
⑥ Microphone	⑮ Camera
⑦ Camera Connector	⑯ Camera
⑧ Camera Connector	⑰ Camera
⑨ Camera Connector	

TF Card

1. Please use the high-quality Class10 or above genuine TF card.
 2. The recorder supports 16G-256G memory card.
 3. If the memory card cannot save the file properly, please format it on the recorder.
- ※ Formatting will delete the data, please backup the card data before performing formatting.



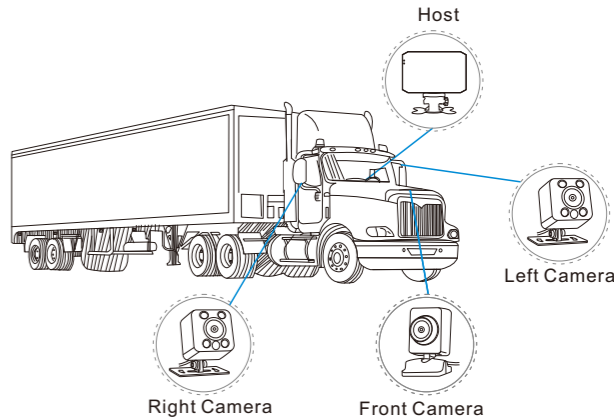
1. Insert the card into the card slot as shown in the picture.
2. When picking up the card, gently press the TF card and slowly release it after hearing "Da".
3. Please pay attention to the direction of the gold finger on the TF card. If it is inserted reversely, the SD card and recorder will be damaged.

- Attention:**
1. The card used on other devices will be automatically formatted after being inserted into our DVR. Please back up the data.
 2. In the case of high frequency of use, it is recommended to format the memory card every two weeks.
 3. Please do not pull out the card in the recording state to avoid damaging the video file and recorder.

Specifications

Model	V7M	TF Card	Support up to 256GB
Screen Size	7Inch(1024x600)	G-sensor	Built-in
Front Camera	1920*1080P	Speaker	Built-in
Left and Right Camera	1920*720P	Microphone	Built-in
Video Format	MOV(H.264)	Working Voltage	DC 5V-2A
Loop Recording	Support		

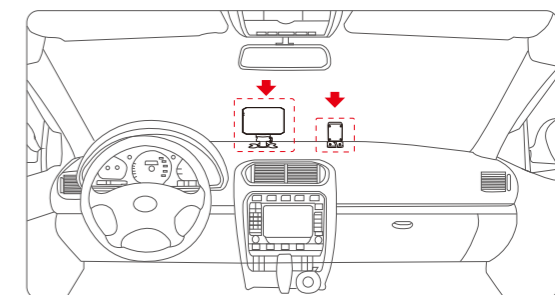
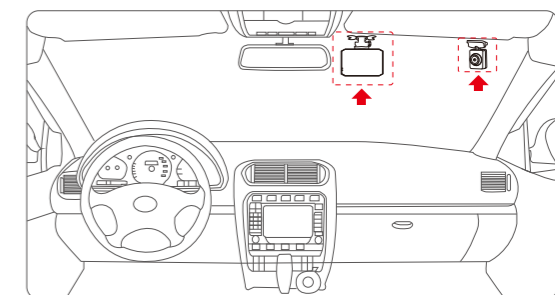
Installation Guide



The yellow line of the right camera is connected to the 12V positive pole on the right turn signal. When you turn on the right turn signal, the right camera image will be displayed in full screen on the recorder. It is convenient to observe the surrounding environment on the right.

The yellow line of the left camera is connected to the 12V positive pole on the left turn signal. When you turn on the right turn signal, the right camera image will be displayed in full screen on the recorder. It is convenient to observe the surrounding environment on the left.

Host Fixed Installation Diagram



- Installation suggestions:
1. It is recommended to hang the recorder host on the windshield or stand on the center console.
 2. It is recommended that the front camera be installed in the car, which can help the driver observe the situation in front of or inside the car. The left and right cameras can be installed on the rearview mirrors on both sides of the car, which can help the driver observe the situation on both sides.
- Note: You can choose to rotate 180° to adjust the screen interface in the host menu.

Power on

After installing the recorder and inserting the SD card, insert the charger into the cigarette lighter. Start the car to start recording automatically.

- Attention**
- ※ This recorder uses the latest supercapacitor design to replace the traditional lithium battery design, supercapacitor will automatically charge and can save the last file after disconnecting the power.

Time Setting

Pause recording after the recorder is turned on→Enter Menu→Choose time setting→Press ↑↓ to adjust time→Press ok to save the settings

Manually Trigger Lock Video

In the recording state, long press the up button, the recorder will enter the emergency lock mode, record a locked video and the front, left and right cameras capture a picture at the same time. The video file name is named after KEY-XXXX. The locked video will not be overwritten by the normal recorded "REC-XXXX" file. When the SD card video file exceeds 10 KEY-XXXX videos, the system will delete the earliest KEY-XXXX emergency video.

G-sensor trigger lock video

In the recording state, if the G-sensor sensitivity is turned on, the video will be locked after the G-sensor is triggered by a collision and reaches the system preset level. And the locked video will not be overwritten by the normal recorded "REC-XXXX". The name of the locked video file is GSR-XXXX. When the SD card video file exceeds 10 GSR-XXXX videos, the system will delete the earliest emergency video of GSR-XXXX.

Recording Mode

Please format the SD card before inserting it. After inserting the SD card, turn on the power of the motorcycle, and the recorder starts to enter the normal loop recording mode. You can set 1/2/3/5 minutes to save a video in the menu. When the SD card is full, new video files will overwrite the oldest saved files. To prevent loss of important files, please backup important video files in time.

Playback Video Mode

In the recording state of the recorder, short press the OK button to pause the recording. Then long press the OK button, the recorder enters the system setting interface, use the up/down button to select the video to be played, and then short press the OK button to enter the playback mode. In playback mode, long press the up button to switch to view the video files saved by the front, left and right cameras. If you need to exit the playback mode, long press the OK button to return to the system setting interface. Then use the up/down button to select the recording icon, and then short press the OK button again to successfully return to the recording mode.

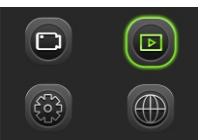
Screen Information and Menu Descriptions

- 1. After selecting, press [OK] to enter recording mode.
- 2. The icon becomes larger to indicate that the function has been selected.



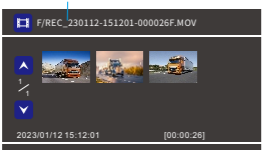
Description of characters on the display in recording mode:

- 1. After selecting, press [OK] to enter playback mode.
- 2. The icon becomes larger to indicate that the function has been selected.



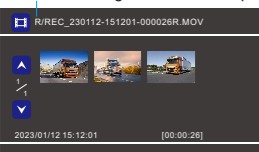
- 1. Press [Up/Down] to select the video to playback

"F" indicates rear camera video playback



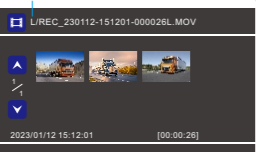
In playback mode: long press [Up] for 3 seconds to switch to view the list of video files saved by the front, left and right cameras

"R" indicates right camera video playback



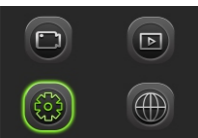
Right camera video files name identification: REC_ The year, month and time of current video R.MOV

"L" indicates left camera video playback



Left camera video files name identification: REC_ The year, month and time of current Video L.MOV

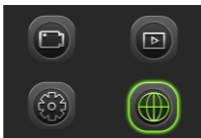
- 1. After selecting, press [OK] to enter setting mode.
- 2. The icon becomes larger to indicate that the function has been selected.



1.Video Clip Time	Select 1/2/3/5 minutes to record a video
2.Sound Record	Set whether video records sound
3.MIC Sensitivity	Set the MIC sensitivity level
4.LCD Brightness	Adjust the display backlight brightness
5.Parking monitoring	On/off
6.Parking monitoring sensitivity	Set the vibration sensitivity when parking
7.Recording Time After Flameout	Set recording time after flameout
8.Screen Rotation	Whether the image of the monitor needs to be flipped 0°/180°

9.Date Watermark	On/off
10.Overspeed alarm	Set the overspeed alarm value. When the driving speed exceeds the preset value, the recorder will issue an alarm prompt
11.Unit System	Set the speed unit selection displayed when driving
12.Button sound	On/off
13.Time Setting	Set the time of the recorder
14.Date Format	3 options, YYYY MM DD/MM DD YYYY/DD MM YYYY
15.Speed watermark	Set whether to display driving speed when playback video
16.LCD Power Save	Set the display screen backlight to be off, or off after 1 min/3min
17.Protect Level	G-Sensor sensitivity level adjustment
18.GPS Status	Display GPS satellite number, longitude & latitude information
19.Time Zone Selection	Time zone selection around the world
20.Reset System	Restore factory Settings
21.WiFi Mode	On/off
22.Format TF Card	Delete all videos from the memory card
23.Firmware Version	Recorder software version

- 1. After selecting, press [OK] to enter language selection mode.
- 2. The icon becomes larger to indicate that the function has been selected.



- 1. Language identification -- corresponding to the selected language.
- 2. The number of language options depends on the actual model.
- ※ The specific functions are subject to the actual product received.

Mobile Phone APP Installation and Operation

The APP is a mobile phone control software used with VSYSTO DVR device. This software is connected to the DVR device via Wi-Fi, it can directly preview and playback the video on the mobile phone, easily realize that viewing the camera documents on the screen of mobile phone, setting or other operations. Subverting the control method of traditional cameras, bring you a new experience.



App download for Android user



App download for Apple user

Scan the QR code above to download the latest APP from Google Play and APP Store. Or you can search "WiFi Camera" on Google Play or APP Store to download and install it. Conditions of use and product association:

- 1. Smart terminal with Android 5.0 or higher or Apple terminal.
- 2. Purchase are cord erterminal device that uses VSYSTO design scheme, and connect the mobile phone WiFi to the camera correctly.

DVR WiFi Default Name: VSYSTO-V7M-XXXX

Default password: 1234567890

※ To ensure the normal use of APP functions, please update the APP to the latest version in time.

- Connection Steps: ① Turn on the recorder;
- ② Enter the WiFi setting interface of the phone, find the corresponding WiFi name, and enter the password to connect to WiFi;
- ③ Open mobile APP, connect the recorder.

Synchronized Recorder Time

After the mobile phone is connected to the WiFi of the recorder, open the APP. When it prompts "command successful", it means that the time of the recorder and the time of the mobile phone have been synchronized with the mobile phone (as shown in the figure below).



Live Preview (Video / Photo)

After connect the camera WiFi with mobile phone, open the APP and click "Connect Device" to enter video preview status. In video preview state you can control camera to take video or photo. Click [Camera Icon] to switch different camera image. Click [Screenshot Icon] to full screen display (as shown in the figure below).



Browse Recorder Files

Click [Online Icon] browse the video files on recorder memory card (as shown in the figure below).



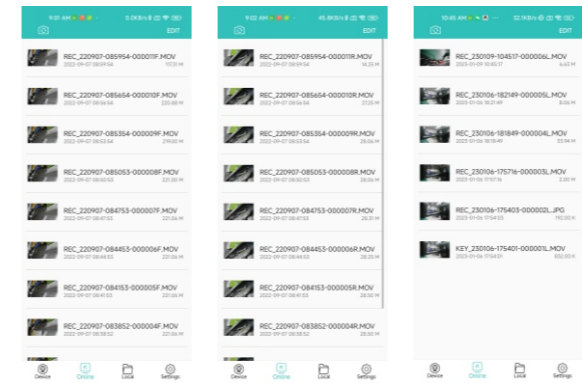
Playback Recorder Files

Browsing the recorder file interface in the "Online" option, click the file you want to playback. Click the upper left corner [Camera Icon] to switch the different camera file, R means the right camera, L means the left camera.

Download or Delete Recorder Files

In the "Online" browsing recorder file interface, click [EDIT Icon] to select the file you want to download or delete, and then click "Save" or "Delete" below as needed (as shown in the figure below).

Video File Name
REC-XXXX— Normal recorded videos
GSR-XXXX— Emergency recorded videos
KEY-XXXX— Emergency recorded videos



Local Files Management

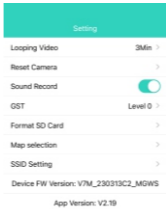
Click [Local Icon] to enter the browsing interface of local files to replay/delete the files stored in the mobile phone, and the operation is similar to the online interface.



Recorder Parameter Setting

Click [Settings Icon] to enter the recorder parameter setting interface, and you can set some parameters of the recorder in the mobile APP.

SSID Setting is the WiFi name and password for setting the recorder (as shown in the picture below).



If you need to view the video track, you can save the downloaded video in the Local of APP. Then switch the phone to a network that can access the Internet, click to play the video, and the track of your driving will be displayed below the video. The default map of the APP is Baidu Map. If you need Google Map, please change Baidu Map to Google Map in the APP settings interface.

※ When you play a video on the mobile APP to view the driving track, you can only view the video of a single camera (front/left/right), and cannot play multiple cameras at the same time.

Wireless Remote Control

- 1. Short press the red button once to switch to the full screen of the left camera
- 1. Short press the blue button once to switch the full screen of the right camera
- 2. Double-clicking either of the two buttons will trigger emergency lock mode. The front, left and right cameras start recording emergency video, while capturing a picture. While recording an emergency video, double-clicking the button again cannot trigger lock mode repeatedly. Only when the last emergency video recording is completed, double-clicking again can trigger. The video file name is named after KEY-XXXX. The locked video will not be overwritten by the normal recorded "REC-XXXX" file.

Battery Replacement Guide

- ① Use a screwdriver to remove the 4 screws at the bottom of the remote control, and then lift off the protective cover.
- ② Push the coin cell battery out of the side with a screwdriver or fingernail.
- ③ Install the new battery into the battery base according to the positive and negative poles. After ensuring that it can be used normally, close the protective cover and screw back the screws.

Model: CR2032

GVP Operation Guide (Optional)

Operating Systems Supported by GVP in XP/7/8/10 Installed Version
Double-click setup.exe to start the installation. After the installation is complete, the desktop and start menu automatically generate shortcuts.



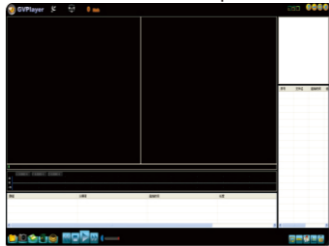
Double-click the desktop shortcut icon [GVP Icon], or click the start menu to select the corresponding option of GVP [GVP Icon] to open the software.

Green Version



Double-click [GVP Icon] to open the software interface icon

Interface Picture Example



Initial Interface

When the mouse moves to the corresponding icon, there will be an operation prompt, please follow the prompt to operate (as shown in the figure below).



Interface during Playback

During playback, double-click the front camera or rear camera image, the full screen of the camera will be displayed. Double-click again to exit full screen.



Note: Due to the limitation of the software system, the video of the left camera cannot be played when viewing the track on the computer. Only the video from the front camera and the right camera can be viewed at the same time. TS format video does not support playing driving track on the computer.

Supports Multiple Languages and Google Maps
Click [Language Icon] to set the player language and map

