

Tommee Tippee[®]

BORN 1965

PerfectPrep[®]



Formula Feed Maker



Download the
Tommee Tippee[®] App
for easy set up





Keep this instruction guide for future reference as it includes important information. These instructions can be downloaded from the Tommee Tippee® app or from www.tommee-tippee.com

This appliance is intended for household use only.

Before plugging in the Perfect Prep® for the first time, ensure that the voltage is compatible with your electricity supply by checking the label on the base of the unit.

Do not immerse in water.

To protect against fire, electric shock and injury to persons, do not immerse cord, plugs or other parts of the unit in water or other liquid.

Misuse of the product may result in the risk of fire, electric shock and/or personal injury.

The appliance shall not be used by children. Keep the appliance and its cord out of reach of children.

Appliances can be used by persons with reduced physical, sensory or mental capabilities or lack of experience and knowledge if they have been given supervision or instruction concerning use of the appliance in a safe way and understand the hazards involved.

Unplug appliance from outlet when not in use and before cleaning.

Allow time to cool before performing any maintenance, cleaning, moving, or storing the appliance.

Cleaning and user maintenance shall not be done by children. The surfaces are wipe clean only.

Do not touch hot surfaces.

When in use the Perfect Prep contains

hot water and steam.

Keep hands away from dispensing spout as it can cause burns and scalds.

Use in a well-ventilated area.

Do not operate any appliance with a damaged cord or plug or after the appliance malfunctions or has been damaged in any manner.

If the supply cord is damaged it must be changed by a qualified person in order to avoid a hazard.

If the damage is from new the unit must be returned to the manufacturer. If within a retail warranty period this product should be exchanged at place of purchase.

Only use this product on a stable, level and heat resistant surface.

Do not place on or near a hob, burner, or oven.

Do not move the appliance when in use.

Do not let the cord hang over the edge of kitchen work surface or touch hot surfaces.

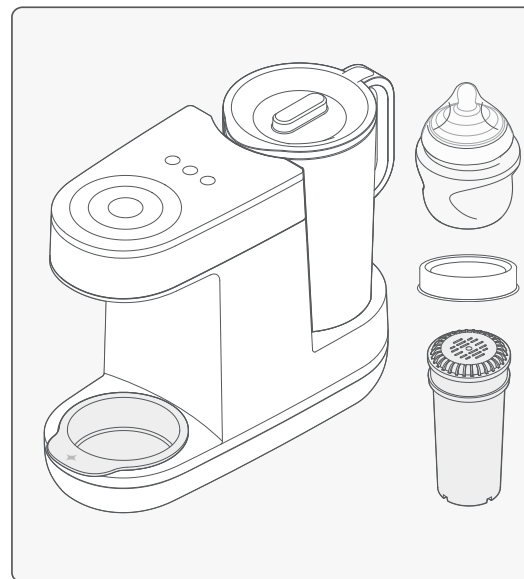
The product has been fitted with a cord wind on the bottom of the unit to allow you to adjust the length of the cord safely.

It is recommended that the cord be kept as short as possible. Extension cords may be used if care is exercised in their use.

Do not use any accessories other than those supplied with this appliance.

DO NOT REMOVE THE WATER JUG WHILE WATER IS BEING DISPENSED.

FOR DOMESTIC USE ONLY - NOT INTENDED FOR COMMERCIAL USE.



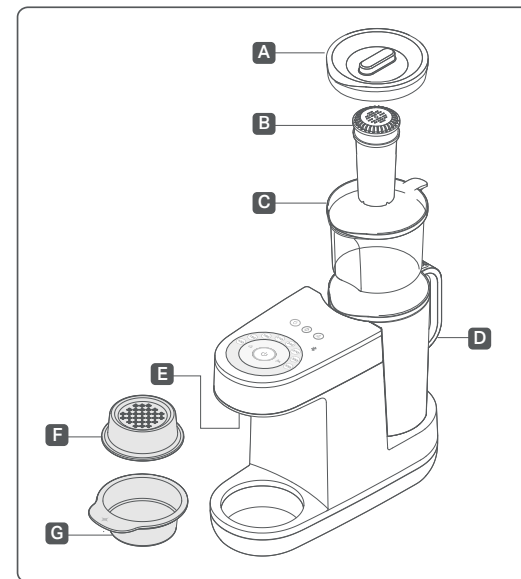
What's in the box:

Perfect Prep® Machine

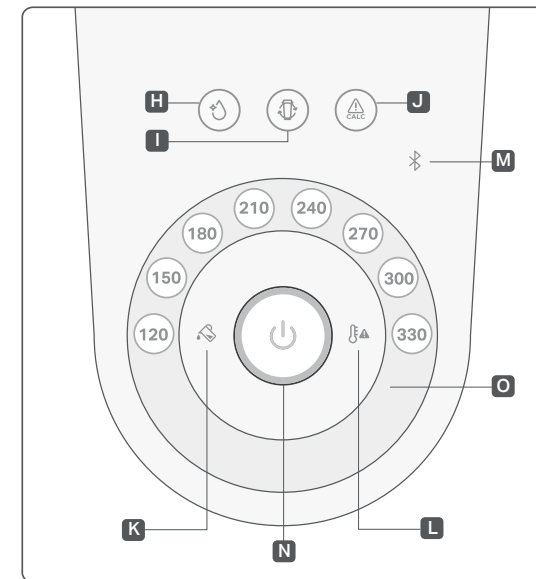
1 x 150ml Natural Start® Bottle with Slow Flow Teat

1 x Milk Storage Lid

1 x Tommee Tippee® Anti-bacterial Water Filter



- A** Water jug lid
- B** Tommee Tippee® Anti-bacterial Water Filter
- C** Filter hopper
- D** Removable water jug
- E** Water outlet
- F** Bottle stand
- G** Drip tray



- H** Cleaning
- I** Fit new filter / Reset filter counter
- J** Descaling
- K** Water level low
- L** Jug temperature warning
- M** Bluetooth pairing
- N** Power button
- O** Setting dial in millilitres

Connecting your Perfect Prep® to the Tommee Tippee® App ✦

Our app has step-by-step guidance to make cleaning, descaling, and filter replacement easier. You'll find how-to tutorials and tips to keep the unit up to date.

Push notifications can be controlled in your mobile phone settings.

The Tommee Tippee® app is available to download on Android and iOS app stores.



Quick set-up guide

These instructions can be downloaded from the Tommee Tippee® app or from www.tommeetippee.com.

- 1 Download the Tommee Tippee® app.
- 2 Open the app on your smartphone or tablet, then follow the instructions.

Extra functions ✦

Volume On / Off

Press and hold both 120ml and 330ml buttons at the same time for 2 seconds.

Bluetooth pairing

Press and hold bluetooth button (M) to reset bluetooth connection. For more info, follow directions on your Tommee Tippee® app.

On / Stand-by / Wake-up

Once the unit is plugged in, press the Power button (N) to power the unit on. The unit will enter stand-by mode after 18 mins of inactivity. Simply press the Power button (N) to wake up.

Cleaning cycle ✦

You must run a cleaning cycle **BEFORE** first use or when indicated by the cleaning icon.

This can take up to 10 minutes to complete. **DO NOT fit your filter until instructed to do so.**

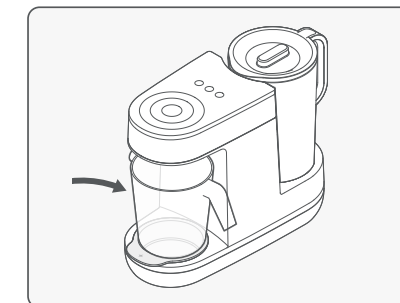
DO NOT REMOVE THE WATER JUG WHILE WATER IS BEING DISPENSED.

You should clean your Perfect Prep® machine:

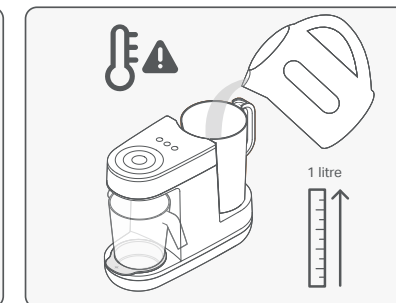
- ✦ Before its first use and then every 30 days.
- ✦ If your machine hasn't been used for 1 week or more.
- ✦ When replacing your filter.
- ✦ After a de-scaling cycle.

Always remove your filter before running a cleaning cycle.

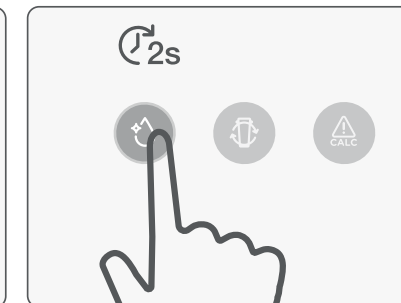
After the initial cleaning cycle is completed, you can cancel further cleaning cycles by pressing and holding the cleaning button for 2 seconds.



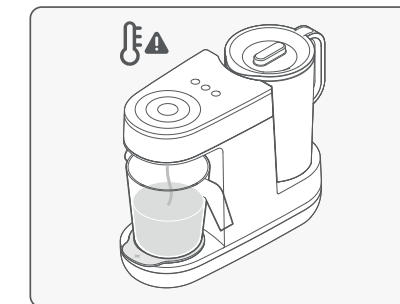
1. Place an empty container under the water outlet, with at least 1 litre capacity.



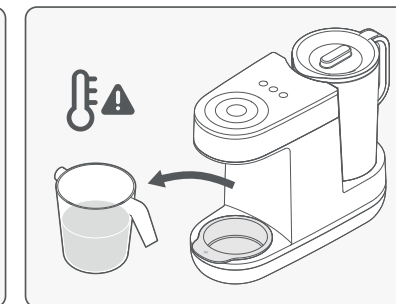
2. Add boiling water straight from the kettle into the water jug (D). The temperature warning light (L) will illuminate during the cleaning process.



3. Press and hold the cleaning cycle button (H) for 2 seconds to start. If you need to pause, press the button again.



4. Wait for hot water to run through the system.



5. Pour away the hot water.

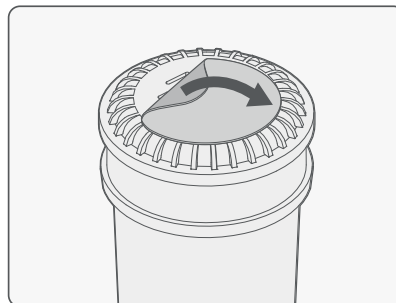
NOW MOVE ONTO PRIMING AND FITTING THE FILTER TO COMPLETE THE CLEANING CYCLE.

IF YOU ARE NOT REPLACING WITH A NEW FILTER, MOVE STRAIGHT TO STEP 3 OF FITTING A FILTER.

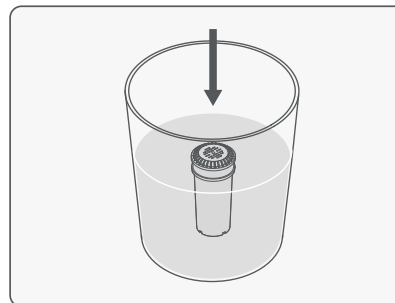
Priming your filter

Make sure that any air bubbles or loose particles are removed from the filter **BEFORE USE** by submerging it in water for at least 5 minutes. This is necessary to enable water to pass through the filter once it is installed in the machine.

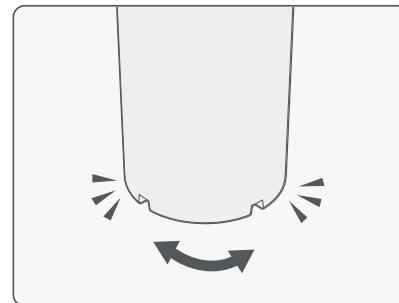
Only touch the top of filter when handling.



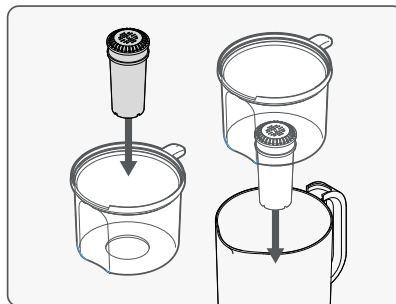
1. Remove the filter from packaging and remove the sticker from the top of the filter.



2. Submerge the filter in a bowl filled with cold tap water.



3. Shake and tap the base of the filter to remove any air bubbles (whilst submerged for 5 minutes).



4. The filter is ready to fit into the filter hopper (C). Push downwards until it is positioned firmly.

FOLLOW FILTER REPLACEMENT INSTRUCTIONS FROM STEP 3.

Filter replacement

You should not reset your filter counter unless you are replacing it with a brand new filter. You must run a cleaning cycle when replacing your filter. See Cleaning Cycle instructions.

Your unit comes with a Tommee Tippee® Antibacterial Filter which lasts approximately 3 months (150 litres of water).

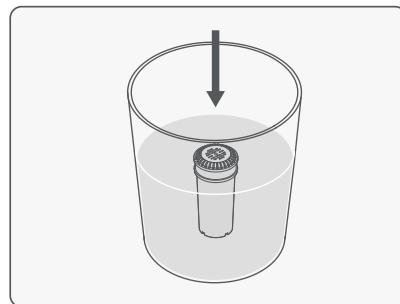
If you use your water jug for daily water consumption in your household (outside of the machine) you should change your Tommee Tippee® water filter every 4 weeks to ensure optimum performance.

You'll know it's time to change your filter when the filter replacement icon (I) lights up solid orange. This is a good time to order your new filters from the Tommee Tippee® app or visit our website (tommeetippee.com).

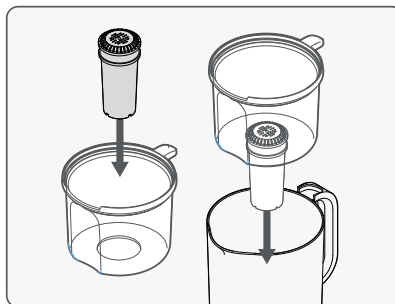
When the filter replacement icon starts flashing (I), the filter must be changed immediately for your child's safety and health.

This product is intended for use with Tommee Tippee® replacement filters only, which are available from all Perfect Prep® Formula Feed Maker stockists. The use of alternative water filters with this product is **NOT RECOMMENDED** and could put your child's health at risk.

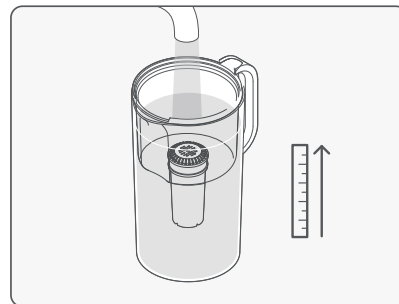
Filter replacement



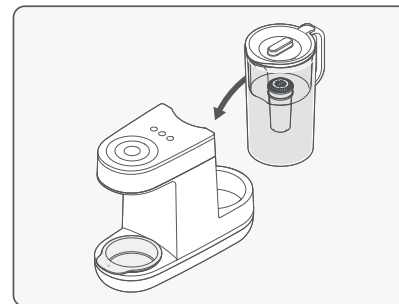
1. Prime your filter by submerging upright it in a bowl of cold tap water. Tap the base of the filter to remove any air bubbles for 5 minutes.



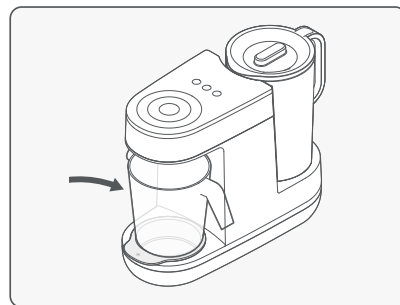
2. Insert filter into the filter hopper and insert filter hopper (C) into water jug.



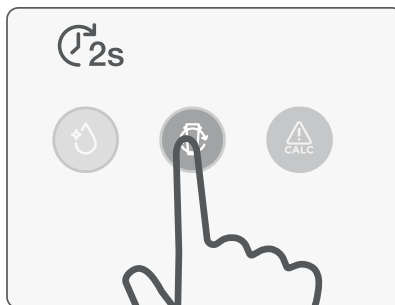
3. Fill filter hopper (C) to the maximum level.



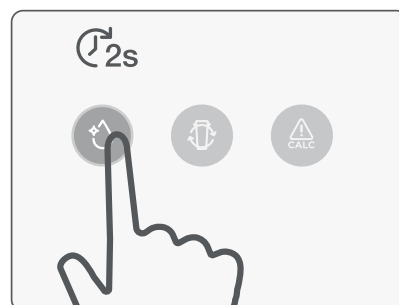
4. Place the lid (A) on the water jug (D) and add to your Perfect Prep® machine.



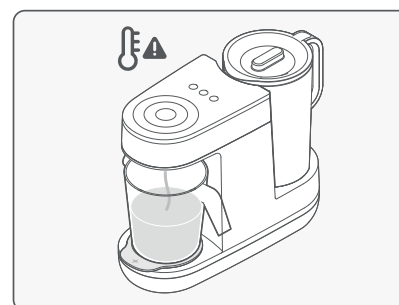
5. Place an empty container under the water outlet.



6. Press and hold filter replacement button (I) for 2 seconds, cleaning light will illuminate.



7. Press the cleaning button (H) for 2 seconds to flush the remaining water.



8. Wait for the water to run through the machine. DO NOT REMOVE THE WATER JUG WHILE WATER IS BEING DISPENSED. DISCARD THE WATER.

Preparing a bottle

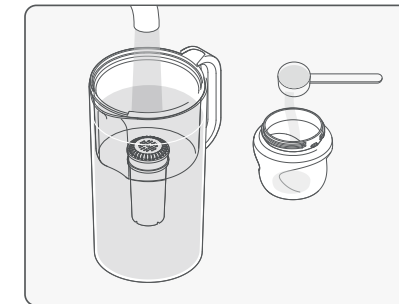


If you need to stop dispensing hot or cold water, press the Power button (N) for 2 seconds.

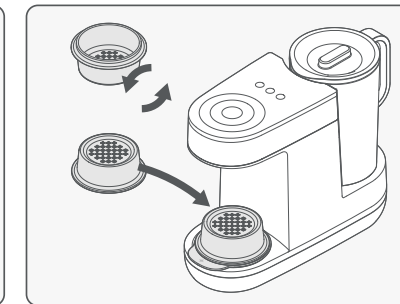
Discard your feed and start the bottle preparation again from step 1.

The unit is ready to be used again when the Power button (N) illuminates white.

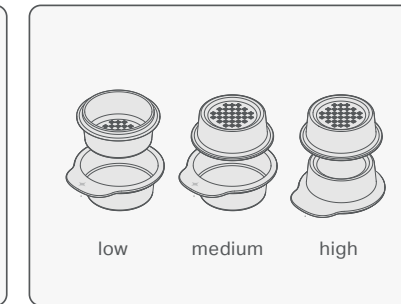
Ensure your hands and all surfaces that come into contact with the Perfect Prep® and its components (including filter) are clean and dry.



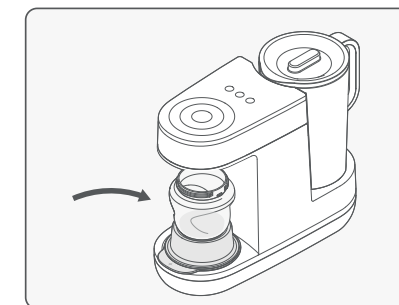
1. Check the water jug has enough water. Pour the formula powder into your bottle. Follow manufacturer's instructions.



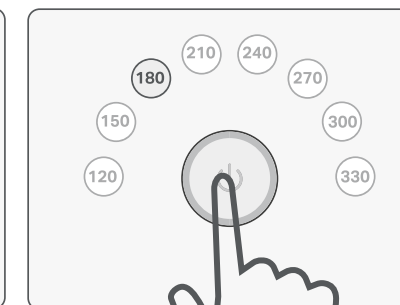
2. Place your bottle as close to the water outlet as possible using the bottle stand and drip tray to create a surface at the correct height.



3. The drip tray and stand can be used in the following formations to make low, medium and high surfaces.



4. Put a bottle with formula powder under the outlet.



5. Select your feed size (ml) from the dial and press Power button (N).



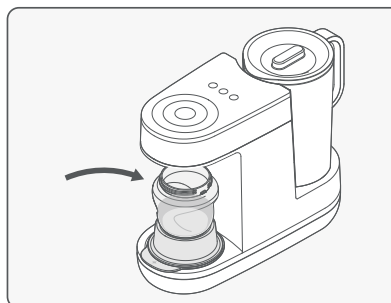
6. A hot shot of water will be dispensed. While the hot shot is dispensing the Power button (N) will be flashing.

Preparing a bottle

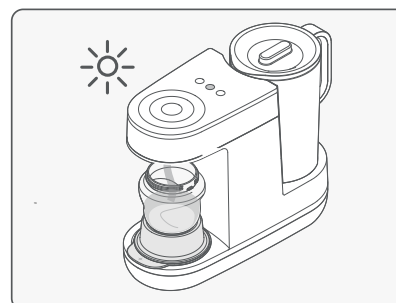


- 7.** Wait for the Power button (N) to pulse before removing the bottle. Add milk lid securely to the bottle and swirl until the formula has dissolved.

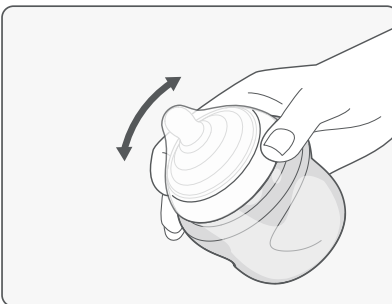
FOR SAFETY, ADD THE COLD WATER WITHIN 2 MINUTES AFTER ADDING THE HOT SHOT. IF YOU TAKE LONGER THAN 2 MINUTES OR IF YOU STOP THE CYCLE, THE POWER BUTTON WILL ILLUMINATE WHITE. DISCARD THE FEED AND REPEAT THE BOTTLE PREPARATION PROCESS FROM STEP 1.



- 8.** Remove the lid and place your bottle back on the stand. Press the Power button (N) again to dispense the remaining water.



- 9.** The Power button (N) will flash to let you know the machine is preparing to dispense. Expect a slight delay before water is dispensed.



- 10.** The bottle is ready when the power button turns green. Add the sterilised teat, screw ring and hood and swirl.

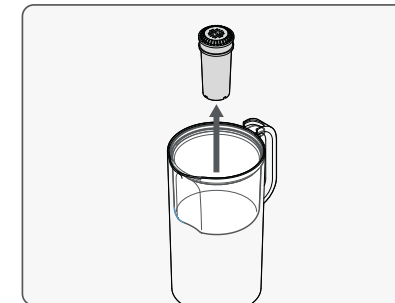
FOR YOUR CHILD'S SAFETY ALWAYS CHECK FOOD TEMPERATURE BEFORE FEEDING BY TESTING ON A SENSITIVE PART OF YOUR SKIN.

YOUR BOTTLE IS NOW READY TO SERVE!

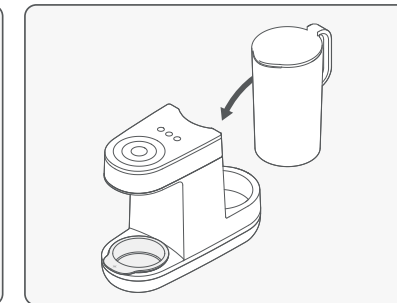
Descaling your Perfect Prep®

The descaling process will remove deposits of calcium and other minerals in the system that may affect its performance.

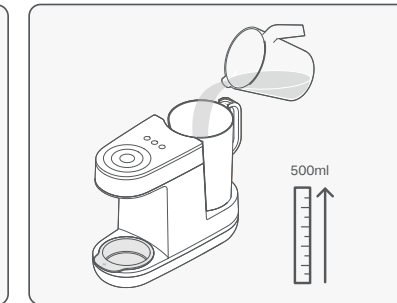
The 'calc' or descaling icon (J) will illuminate when the unit requires descaling soon. If the light flashes, you should descale immediately.



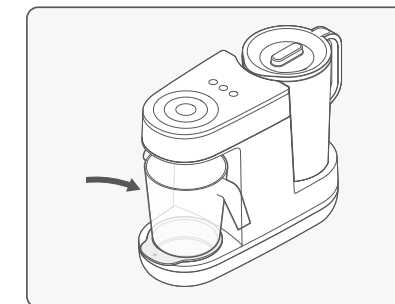
- 1.** Remove the filter hopper and filter (always place them on a clean surface).



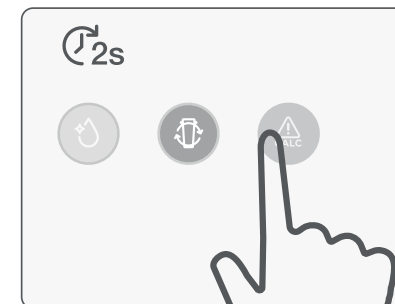
- 2.** Put the water jug in place.



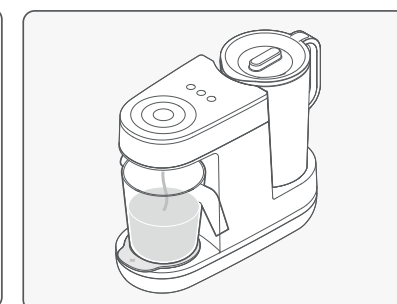
- 3.** Add 500ml white vinegar to the water jug.



- 4.** Put an empty container under the outlet.



- 5.** Press and hold descale button for 2 seconds. If you need to pause, press the button again. Press and hold the same button for 2 seconds if you need to cancel.



- 6.** The descale cycle will stop and start to allow the vinegar to clean the machine. This is normal. When complete, pour the vinegar away.










SUCCESS!

RUN THE CLEANING CYCLE TWICE TO REMOVE ANY REMAINING VINEGAR IN THE SYSTEM.






THE MACHINE MAY MAKE A LOUD SOUND FOR AROUND 10 SECONDS AT THE END OF THE DESCALE CYCLE. THIS IS NORMAL.

SEE CLEANING CYCLE INSTRUCTIONS.

Troubleshooting

Icon	Issue	Possible cause	Solution
	Bluetooth is not connecting.	Perfect Prep® unit too close to other electronic devices like microwaves may be affecting coverage.	Move Perfect Prep® away from electronic devices like microwaves.
		Your mobile phone is on battery saving mode.	Ensure your mobile phone is fully charged and is not on battery saving mode.
		Location services on your mobile is disabled.	Ensure the location services on your mobile is enabled.
		TT App does not have permission to phones BLE	Ensure permissions are enabled.
	Solid orange light on Bluetooth icon.	No phone is paired with the unit.	Press and hold Bluetooth button for 2 seconds to reset the Bluetooth connection and follow instructions on the Tommee Tippee® app to pair.
	Pulsing blue light on Bluetooth icon.	Perfect Prep® unit is searching for a device to pair with.	Follow instructions on the Tommee Tippee® app to pair.
	Solid red light on power button and 150ml on the setting dial lights up.	The machine may be too warm. Operating temperature range is between 5°C and 28°C.	Empty the water jug and refill with cool tap water, switch off at the main power supply to reset.
	Flashing red light on power button.	The cycle has been stopped.	You must discard the feed and start the bottle preparation again from step 1. The light will flash for 20 seconds before going back to white, this will indicate you can start again.
	Solid orange light on filter replacement icon.	Its time to think about replacing your filter.	Order a new filter from the Tommee Tippee® app or visit our website (tommeetippee.com)
	Flashing orange light on filter replacement icon.	The Perfect Prep® will not allow you to continue use until you replace the filter.	The filter must be changed immediately for your child's safety and health. Follow steps to replace your filter.
	Solid orange light on descale icon.	Your Perfect Prep® needs to be descaled.	Follow the Descaling instructions.
	Flashing orange light on descale icon.	The Perfect Prep® will not allow you to continue use until you descale the machine.	Follow the Descaling instructions.

Troubleshooting

Icon	Issue	Possible cause	Solution
	Solid orange light on cleaning icon.	Your Perfect Prep® needs to be cleaned.	Follow the Cleaning Cycle instructions.
	Solid orange light on water level low icon.	The water level in the water jug is too low.	Ensure you have enough water in the water jug.
	Solid orange light on temperature warning icon.	The water in the jug may be too warm. Operating temperature range is between 5°C and 28°C.	Empty the water jug and refill with cool tap water.
	The unit has stopped working.	If you have not replaced your filter and the filter replacement icon is flashing.	The filter must be changed immediately for your child's safety and health. Follow steps to replace your filter.
	The filter is taking too long to filter water.	The filter requires priming before use to release any air bubbles and allow the water to flow.	Fully submerge the filter and tap the base of the filter on the side of the jug or basin for approximately 5 minutes to release any air bubbles.

For further support and FAQs, visit the app or the product support page at tommeetippee.com.

Technical information


Model: 1245 - 4

Voltage: 220 - 240V ~

Frequency Band:
50Hz - 60 Hz 820W

Class of Protection: 1

Made in China.



INFORMATION ON THE DISPOSAL FOR WASTE ELECTRICAL & ELECTRONIC EQUIPMENT (WEEE)

This symbol means that your product shall be disposed of separately from household waste in accordance with local laws and regulations. When this product is ready for disposal, take it to a collection point designated by local authorities. Separating and recycling of your product at the time of disposal will help conserve natural resources and ensure that the product is recycled in a manner that

protects human health and the environment. Penalties may be applicable for the incorrect disposal of this product in accordance with national legislation.

Warranty

If the unit is damaged from new the unit must be returned to the manufacturer. If within a retail warranty period this product should be exchanged at place of purchase. The manufacturer will then be made aware.

2-YEAR WARRANTY when you buy direct from tommeetippee.com

RED Declaration Hereby, Mayborn (UK) Limited declares that the radio equipment type Perfect Prep® is in compliance with Directive 2014/53/EU. The full text of the EU declaration of conformity is available at the following internet address:
www.tommeetippee.com/contact-us

Mayborn ANZ Pty Ltd. (ABN 66 154 703 134),
PO Box 475, Mt Waverley, VIC 3149, AUSTRALIA.

All IP rights held by Mayborn (UK) Limited and/or its affiliates.
TOMMEE TIPPEE®, PERFECT PREP®, NATURAL START®. Copyright © 2024.
tommeetippee.com

0426778 P2