

Syncra SDC



6.0
7.0
9.0

INDEX

KEY FEATURES

SAFETY INSTRUCTIONS

COMPONENTS

SPARE PARTS

PUMP INSTALLATION: USE AND REGULATION

IN LINE APPLICATIONS

MAINTENANCE

SPECIAL MAINTENANCE AND REPLACING GROUP ROTOR

CHECK LIST BEFORE USING CONTRALL APP

CONTROLLER USE AND PUMPS REGULATION

WI-FI SET UP

LOSS OF WI-FI CONNECTION AND CONTROLLER RESET

VOICE COMMANDS

CONTROLL APP AND ALERTS SYSTEM

CONTRALL APP INFOS

DEEP Cleaning & TIPS FOR A LONGER LASTING

ONLINE HELP

INSTRUCTIONS FOR THE CORRECT DISCHARGE OF THE PRODUCT ACCORDING TO EU DIRECTIVE 2002/96/EC

WARRANTY

Dear Customer, thank you for choosing the new pump SYNCRA SDC. By purchasing this new generation of SYNCRA Silent pumps you will benefit from a high-tech and cutting-edge product. The pumps are speed control and can be set up with the use of the controller included. Furthermore by using your domestic Wi-Fi network you can download the new SICCE App: CONTRALL and manage the pump with your smarthphone (Android system or iOS). The SYNCRA SDC pumps offer a guarantee of a complete and efficient managment, without limits of time and space. Directly from your smartphone, wherever you are, you can control and monitor your system in a simple and immediate way. SYNCRA SDC and CONTRALL App: our future is energy saving and environmental protection.

KEY FEATURES

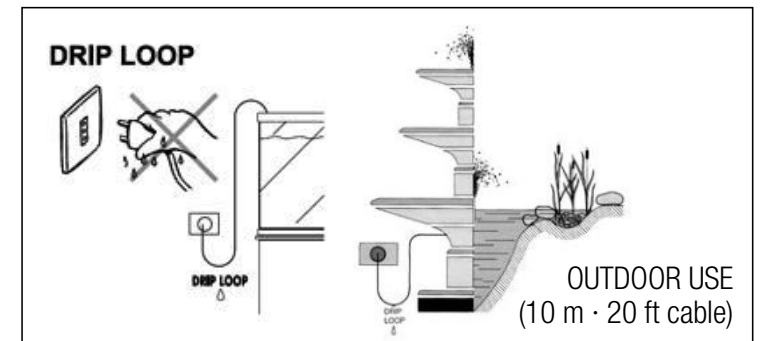


SAFETY INSTRUCTIONS

SYNCRA SDC is made in conformity with the national and international safety standard regulation.

- 1)** Always isolate the pump from the mains electricity before installing or carrying out any maintenance. Power to the pump must be supplied through a Residual Current Device (RCD) with a rated residual operating current not exceeding 30mA.
- 2)** The pump can work submerged or inline out of water. (impeller must always run wet)
- 3)** Before connecting the pump to the electricity supply, check there is no damage to the cord or plug.
- 4)** The pump has a type Z cable link. The cable and the plug cannot be substituted or repaired; in case of damage to the cable, the entire pump must be replaced.
- 5)** ATTENTION: do not operate any Appliance if it has a damaged cord or plug, if it is malfunctioning, or if it has been dropped or damaged in any way.
- 6)** The pump must not work without water to avoid damages to the motor.
- 7)** The pump can be used in liquids or in environment with a temperature not higher than 35 °C / 95 °F.
- 8)** Do not use the pump for uses different to those for which it has been projected as, i.e. in bathroom or similar Applications.
- 9)** Avoid using the pump with corrosive and abrasive liquids.
- 10)** This pump requires adult supervision.
- 11)** To avoid that accidental drips wet the plug or the socket, make a loop with the cord under the socket level (Pic. A).
- 12)** To prevent any damage , avoid to take the pump by the cord during the installation or maintenance.
- 13)** The pump can be used only in the above mentioned Applications and it is only for internal use, when the cable's lenght is shorter than 10mt or 10".
- 14)** If the pump or the filter is supplied with a cable 10 meters long, or more than 6 feet long for the American type (USA), these Appliances are intended for outdoor use as required by international standards.

A

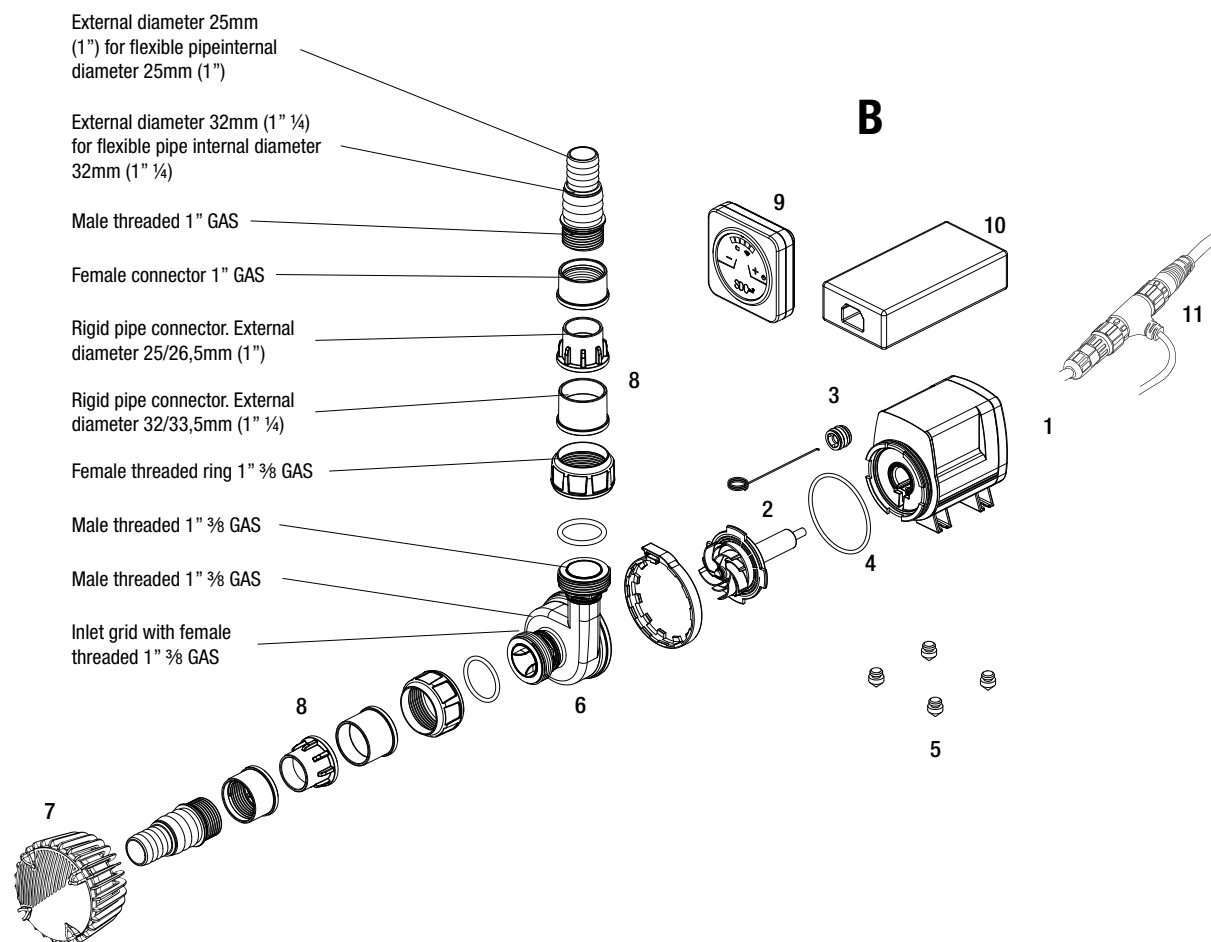


COMPONENTS

SYNCRA SDC pumps are designed favoring the almost total dismantling of their components, to facilitate proper use and maintenance and ensure a long life. Below is the list of the individual parts and spare parts (Pic.B):

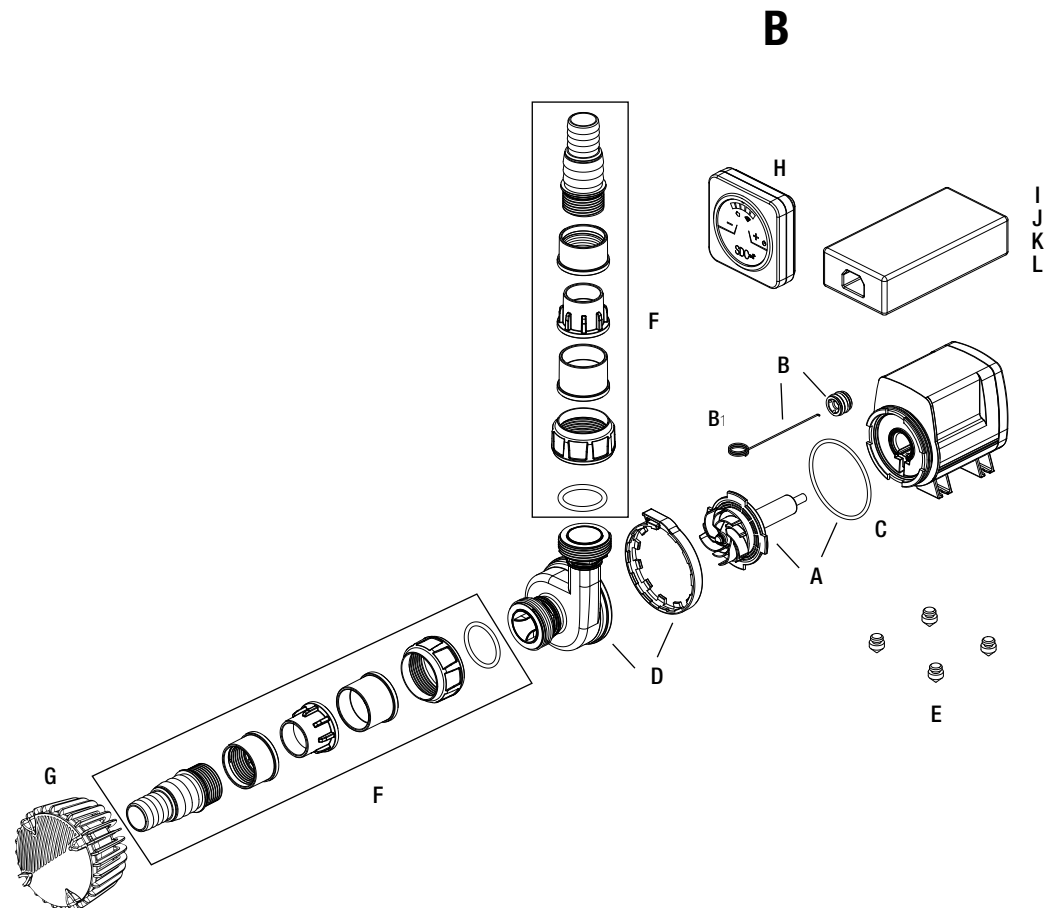
1. Motor body completely submersible and insulated by epoxy resin;
2. Rotor Kit with Impeller and bottom bearing
3. Bottom Bearing (Hook - accessory)
4. O-Ring
5. Anti-vibration Rubber Feet
6. Turning Pre-Chamber
7. Pre-filter Grid
8. Threaded Hose fittings
9. Remote control Controller with "T" cable
10. AC-DC power adaptor with LED light
11. Connector cable "T"

TECHNICAL DATA		6.0 (24 V)	7.0 (24 V)	9.0 (24 V)
Switching power supply	Q min - max	2000 - 5500 l/h 530 - 1450 US gph	3000 - 7000 l/h 800 - 1900 US gph	4000 - 9000 l/h 1000 - 2500 US gph
	H min - max	1,0 - 3,5 m 3,5 - 11,5 ft	2,0 - 5,0 m 6,5 - 16,5 ft	2,6 - 7,0 m 8,5 - 23,0 ft
INPUT: 100-240V 50/60Hz	Watt min - max	10 - 40 W	20 - 65 W	30 - 95 W
OUTPUT: 24V DC	Cable length	3,0 m + 10.0 ft +		



SPARE PARTS

SPARE PARTS		6.0	7.0	9.0
Rotor + ceramic shaft + O-ring	A	SGR0222	SGR0218	SGR0217
Bottom bearing + hook	B	SVE0054	SVE0052	
Hook	B ₁	SPL0024		
O-ring for prechamber and rotor	C	SVE0055	SVE0053	
Prechamber with closing ring	D	SPL0097	SPL0095	
Anti-vibration silicon feet	E	SVE0033 (4 pcs.)		
Hose fittings for rigid and flexible pipes	F	STR0029		
Protective grid	G	SPL0094		
Controller	H	SKT0207		
AC/DC power adaptor (EU)	I	SKT0216	SKT0208	
AC/DC power adaptor (US)	J	SKT0217	SKT0209	
AC/DC power adaptor (UK)	K	SKT0218	SKT0210	
AC/DC power adaptor (AU)	L	SKT0219	SKT0211	



PUMP INSTALLATION:

USE AND REGULATION

SYNCRA SDC can be remotely set up by using the controller or by downloading the new SICCE CONTRALL App.(iOS-Android)
For the physical installation of the pump it is necessary to proceed as follows:

- Unwind the power cord of the pump in an area where it will not be damaged in any way.
- Join the connector of the pump's cable to the special T joint of the controller's cable. On the other side of the "T" join the power supply connector. Connect first the power supply cord to the transformer and then to the power outlet. The transformer is universal and works with all voltages and frequencies.

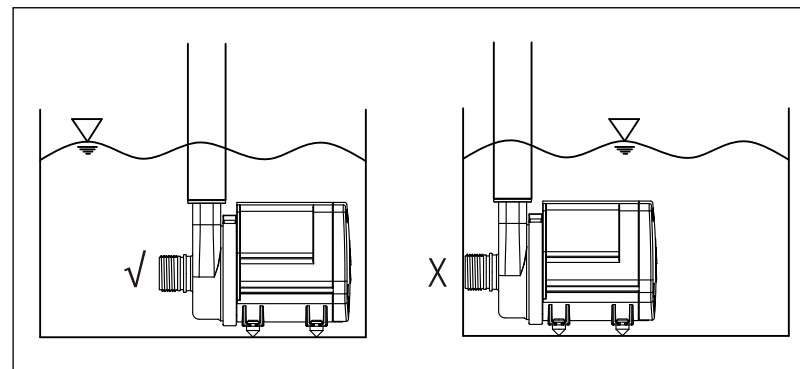
The pump is now powered but not active.

The controller must be positioned away from spray and moisture and where it can not accidentally fall into the water.

The Controller can be attached to the wall or aquarium cabinet using the included bioadhesive or screws.

- Connect the fitting to the pump's outlet to which you can then connect the flexible or rigid pipe of the Appropriate diameter.
- Place the pump in an easily accessible area for the maintenance operations.
- If the pump is used submersed and not in line, it must be always fully submersed. (Pic. 1)

1



IN LINE APPLICATIONS

It is recommended to place the pump in spaces where there is a proper ventilation and the pump is not directly exposed to heat sources.

Place the pump so as to prevent too long idraulic pipings, which would reduce its performance.

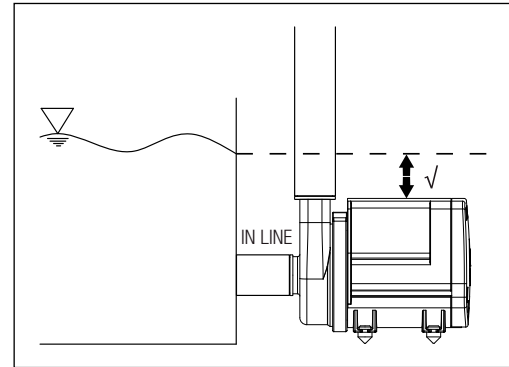
Do not position the pump above the water level (Pic.2) because it is not self-priming and the risk of the pump to run dry. The risk of invisible air bubbles creating a vacuum area is very high. Damages which are caused by the pump running dry are excluded from warranty.

To maximize the pump's efficiency, choose a straight inlet tube without elbows. (Pic.3)

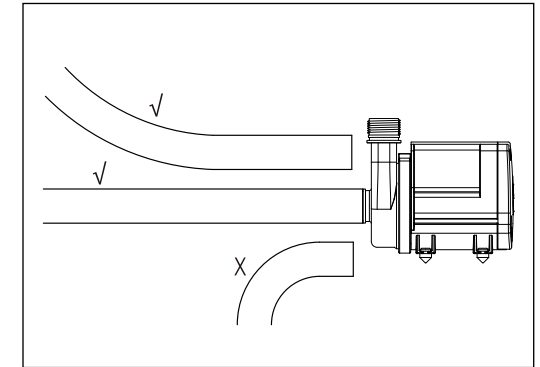
We suggest an Inlet and outlet tubes with diameter equal or bigger than the diameter of the threaded pipe included. (Pic.4)

Do not use the pump leaving the outlet totally closed. A minimum water flow is necessary to keep the inner motor cool without running dry (Pic.5)

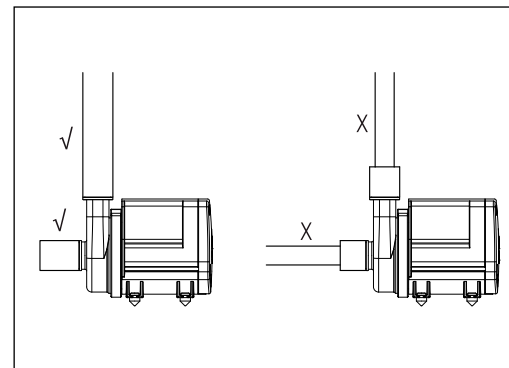
2



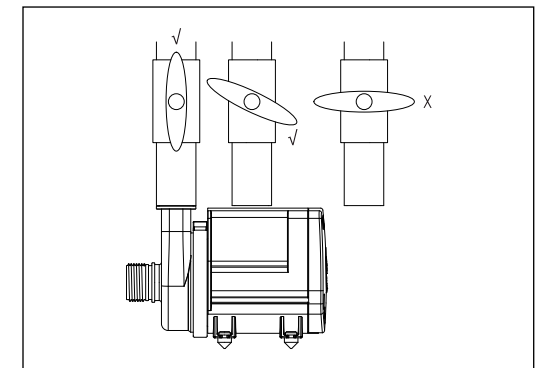
3



4



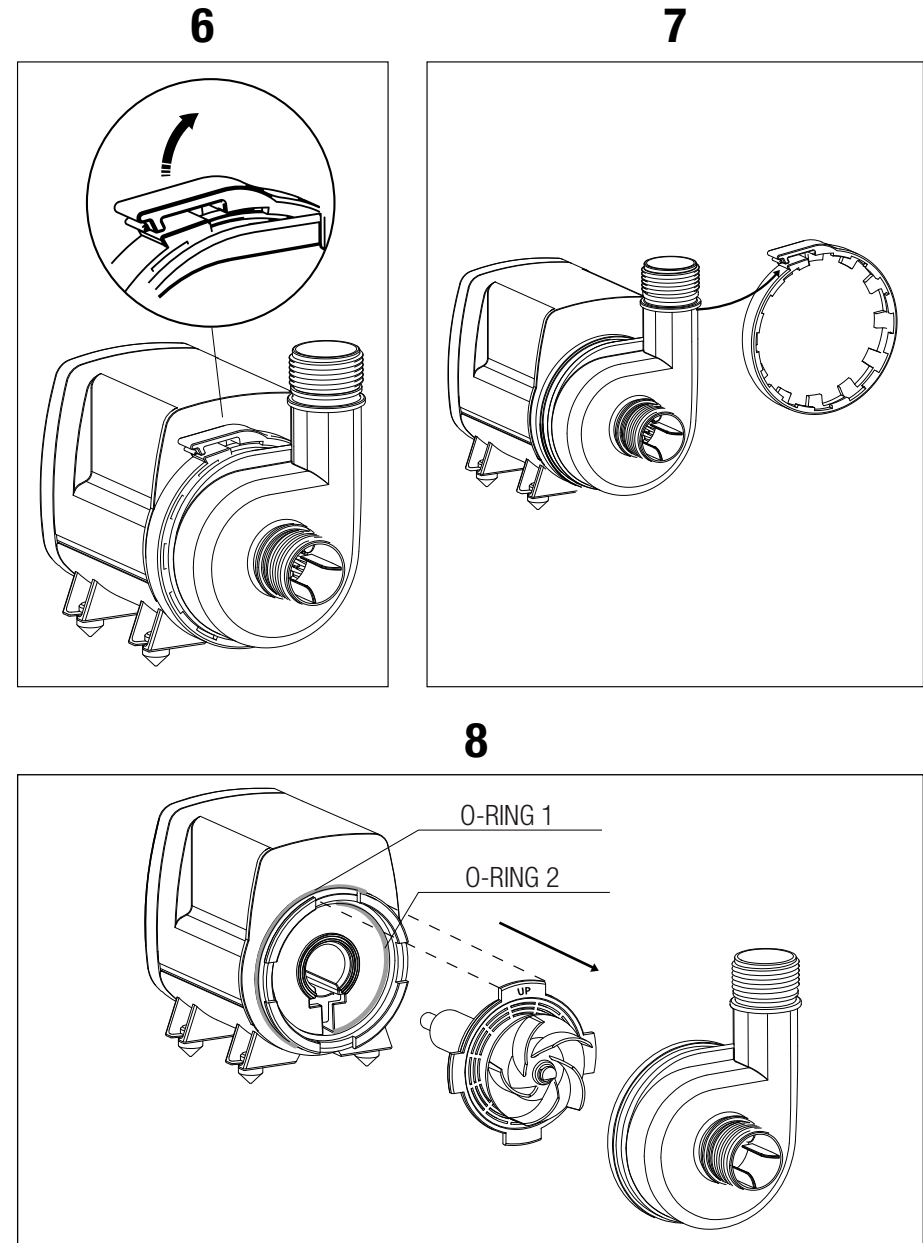
5



MAINTENANCE

For the periodic maintenance of the pump, unplug the pump from the electric socket and then remove the pump from water.

- 1)** Lift the plastic ring of the pump's volute pulling the tab outwards (Pic.6)
- 2)** Remove the ring (Pic.7)
- 3)** Remove the volute of the pump by turning and simultaneously pulling forward (in the case of fouling this may take more pressure).
- 4)** Pull out the complete rotor set (Pic.8)
- 5)** Rinse each part with water, using a soft brush to remove the deposit.
- 6)** Then assemble everything in the inverse order.



7) Put the ring in place with the biggest teeth facing the pump and close it by pressing on the tab until you hear a “click”. (Pic.9)

Any damage to the o-rings, even small, can seriously endanger the pump performance. In this case, it is best to replace them.

IMPORTANT: The build-in circuit board of the pump has been programmed to provide 3 levels of protection:

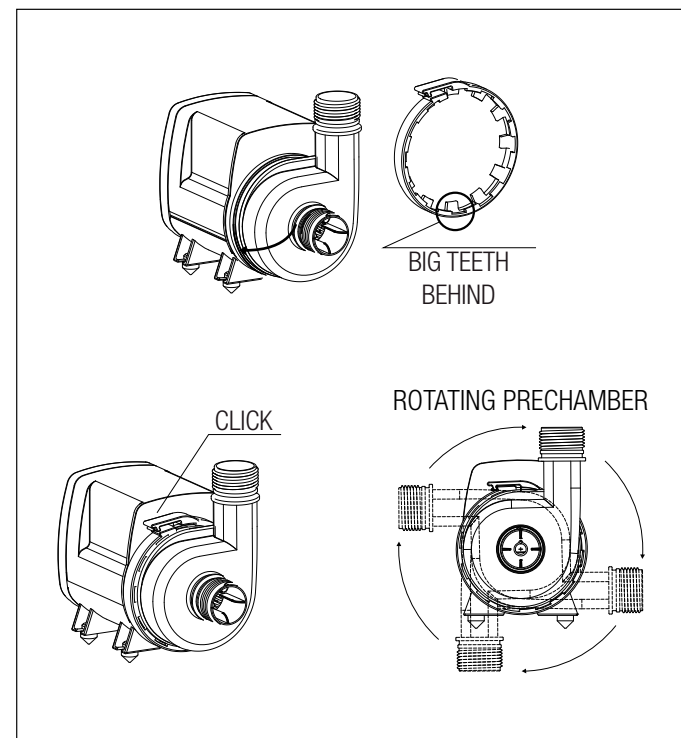
Protection against rotor's blockage: In case of malfunction which causes the lock of the rotor (due to excessive dirt or other) or of operating without water, the pump, will initiate 10 startup attempts to turn the pump on correctly. If after 10 attempts this does not happen, the pump will stop automatically and remain in standby. The controller will remain powered, but the engine will shut down. In this case to restart the pump you need to disconnect the plug for about 30 seconds and re-insert it into the power socket.

Dry running protection: motor's protection in case of functioning without water. The pump stops when it works without water, or if there is a locked rotor. When the pump is taken out from the water, the motor stops.

- Thermal protection: when the built-in electronic board detects a temperature increase outside the working parameters of the pump, it turns the pump off to avoid damage to components or to the motor.

ATTENTION: do not underestimate the power of the magnet. If you slightly loose the grip and the axis hits the rear bearing, the risk to damage the bearing is very high. A damaged axis and bearing causes high repair costs.

9

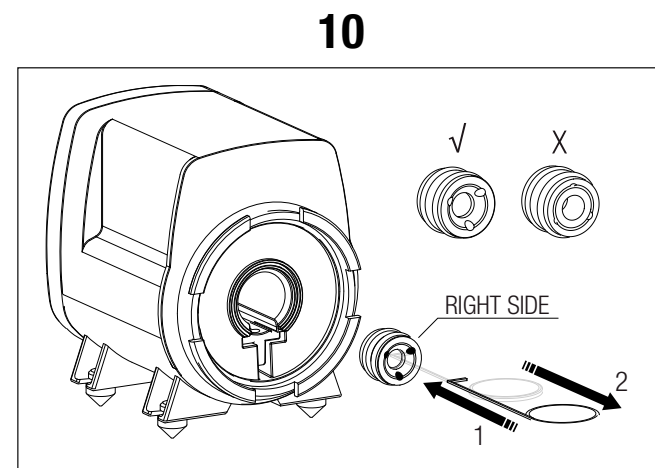


SPECIAL MAINTENANCE AND REPLACING GROUP ROTOR

Follow this instruction for an accurate rotor kit cleaning or replacing
Repeat the opening actions as indicate in Maintenance' section, steps 1,2,3,4.

To easily remove the bottom bearing, we suggest to leave the pump submersed with water and Pump Clean for a while to make soften debris or limestone.

- Insert the hook (accessory) inside the tube of the pump. (Pic 10)
- Hook the bearing and pull it out
- Clean the bearing under running water (never use soap or detergent of any kind because they pollute the aquarium water: we recommend using a vinegar and water solution) possibly using a soft brush to remove scale deposits. If it is heavily worn we suggest to replaces it with a new one.
- Re-insert the bearing sleeve in the pump (Pic.10) after wetting and push it all the way.



CHECK LIST BEFORE USING CONTRALL APP

- Check the distance between the device and the wireless router (Wi-Fi network). A long distance may weaken the signal strength and take a long time to record the device, in worst scenario the installation may fail.
- To check the Wi-Fi connection, make sure that the Wi-Fi icon is on
- The device only supports 2.4 GHz Wi-Fi networks. To check the frequency of your network, you need to contact your internet service provider or refer to your wireless router manual.
- SICCE Srl is not responsible for any problems relating to the network connection or for failures, malfunctions or errors caused by the network connection.
- In case connecting the device to the Wi-Fi network does not succeed, it is possible that the device is too far from the router. Buy a repeater (range extender) to increase the intensity of the Wi-Fi signal.
- The Wi-Fi connection may not occur or be interrupted due to the environment of the home network.
- The network connection may not work properly depending on the Internet service provider.
- The surrounding wireless environment may slow down the wireless network service.
- The device cannot be registered due to problems with wireless signal transmission. Disconnect the device and wait for about a minute before trying again.
- If the firewall on the wireless router is active, disable it or add an exception.
- The name of the wireless network (SSID) should be a combination of English letters and numbers. (do not use special characters).
- The smartphone user interface (IU) may vary depending on the operating system (OS), the manufacturer or following updates to the App CONTRALL or the operating system itself.
- If the router security protocol is set to WEP, it may not be possible to set up the network. Change the protocol (WPA2 is the recommended one) and register again the product.

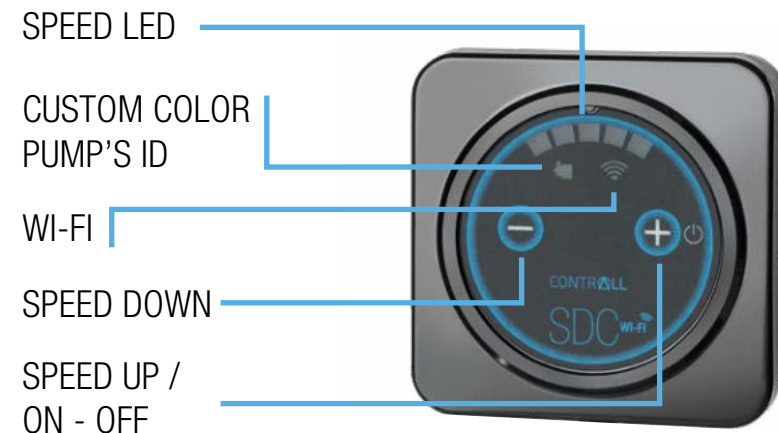
CONTROLLER USE AND PUMPS REGULATION

By connecting the power supply to the controller, all the LEDs light up once. After about 20 seconds the Wi-Fi symbol will start to flash slowly to indicate that it is ready and awaiting the set-up. After the configuration, once connected to the Wi-Fi network, the led will make 5 rapid flashes every 5 seconds. If the controller has already been set-up, once powered, the Wi-Fi automatically reconnects to the network and reloads the programs set in the CONTRALL App.

To activate the pump, keep the right key (+) pressed for 3 seconds. The pump starts at 50% of the operating range. Pressing the keys (+) and (-) it is possible to increase or decrease the pump flow. Consequently, the luminous intensity of the 5 LEDs will vary. The pump symbol will light up in the color set via the CONTRALL App. The Wi-Fi symbol will flash blue slowly while waiting to be connected to the Wi-Fi network via the CONTRALL App. If the pump is managed via CONTRALL, it will not be possible to modify its operation using the controller. It will only be possible to switch it off by keeping the right key (+) pressed for 3 seconds.

The Controller supplied can only regulate the flow. It can only be powered with the included transformer and manages only the supplied pump. Any other use could irreparably damage the device and void the warranty.

NEW SDC SMART CONTROLLER



WI-FI SET UP

CONTRALL App Free download
Select MY DEVICES and tab on +
Choose these SYNCRA SDC



Read the text and then Confirm PROCEED.
Next: select the WIFI network you wish to link the pump and the WIFI psw.
Give a name to your pump and confirm with DONE.

It may take few seconds before the connection is active



Faster Set-Up with New configuration system

LOSS OF WI-FI CONNECTION AND CONTROLLER RESET

In case Wi-Fi connection is lost, the pump will continue working and the user will receive a notification via email if this warning has been activated in the App CONTRALL. The connection will be restored automatically as soon as the wireless network is available again.

WIFI AND CONTROLLER RESET

Remove power from the controller. Press and hold down the “+” and “-” buttons at the same time and re-power the controller. Keep them pressed until the Wi-Fi LED flashes quickly. Release the buttons. After about 20 seconds the Wi-Fi symbol will start blinking slowly to indicate that it is ready and waiting for configuration.

VOICE COMMANDS

Voice commands can be activated via Siri - Google assistant - Alexa

- POWER ON
- SHUTDOWN
- TEMPERATURE CONTROL
- READING OF THE ALERT IN CASE IT IS ACTIVATED
- PRESET CHANGE OF FLOW AND PUMP POWER - (REDUCE 10% / INCREASE 10%)

COMPATIBLE WITH:

- Apple Watch (iOS)
- Smartwatch (Android)



Siri



Google
Assistant



alexa

CONTROLL APP AND ALERTS SYSTEM

Notifications in real-time with a complete alert system can be activated in CONTRALL App profile session. Alerts in real time will be sent in case of:

- Aquarium temperature outside of the custom set range
- Blocked Rotor protection
- Dry running protection
- Loss of Wi-Fi signal

CONTRALL APP INFOS

Periodic updates of the App are recommended in order to take advantage of any improvements to the service and the Application itself.

INITIAL SCREEN

MY DEVICES: these are the single devices registered and manageable individually

MY SMART SYSTEMS: it is possible to group together a series of individual devices, for example 2 XSTREAM SDC pumps, a SYNCRA SDC pump and a pump for skimmer PSK SDC and create a system to which to assign a distinctive name. In case you want to manage multiple aquariums, this function allows you to control them more immediately and efficiently. It will be possible to switch off and switch on all devices by pressing a single button and schedule FEED TIME.

NOTIFICATIONS: in this session the received notifications will be automatically recorded.

PROFILE: within this session it is recommended to activate the NOTIFICATIONS, to adapt the units of measurement to the country system, to give consent to the newsletter to receive updates and communications, to select the desired language.

DEEP CLEANING & TIPS FOR LONGER LASTING

USE SICCE PUMP CLEAN

It's important to keep your SICCE Pump in prime operating condition to ensure long-life and efficient operation. Over time, natural mineral deposits will form in the filter surface and rotor, and if untreated, may cause undesirable operation or even failure. SICCE PUMP CLEAN is a super-concentrated, yet completely safe solution to remove these deposits and keep your filter in tip-top shape.

TIPS

In case, after a first installation, the pump will not be used for over one week, we recommend to take the rotor assembly out of the pump, cleaning it thoroughly and store pump and rotor separately.

The limestone deposits and the natural wear-out of the components might cause a raise of the pump's noise. However, they do not affect the good functioning of the pump. In this case, we recommend you to replace the impeller.



ONLINE HELP

Watch our tutorial videos on THE SICCE YOU TUBE official channel

www.youtube.com/SICCEspa

INSTRUCTIONS FOR THE CORRECT DISCHARGE OF THE PRODUCT ACCORDING TO EU DIRECTIVE 2002/96/EC

When used or broken, the product does not have to be discharged with the other waste. It can be delivered to the specific electric waste collection centers or to dealers who give this service. Discharge separately an electric tool avoid negative consequences for the environment and for the Health and allows to regenerate the materials so to have a great saving of energy and resources.

WARRANTY

SICCE guarantees this product (see Exclusions below) to the original purchaser against defects of materials and workmanship for a period of three (3) years from the date of original purchase, except for the pump's impeller, which is guaranteed for a period of six (6) months. This warranty is limited to repair or replacement (at SICCE's option) of defective product only and does not cover loss of aquarium life, personal injury, property loss, or damage arising from the use of the product. We recommend to keep the original proof of purchase to validate the warranty. Warranty claims must be submitted to the retailer where you purchased the product. Failure to present proof of purchase attached to the claim will invalidate the right to the guarantee. By connecting to the website www.SICCE.com, in the Appropriate session, you can request assistance if it has not been possible to contact the dealer. Also in this case the proof of purchase will be a fundamental requirement for the correct execution of the return procedure. Any warranty herein shall run concurrently with, and not in addition to, any minimum warranty periods established by Applicable law. The claimant must obtain a "Return Merchandise Authorization" at the time of filing before sending any product for warranty or technical service. The purchaser bears the cost of shipping to and from the service center or repair station.

EXCLUSIONS. This warranty does not cover the following: *Damage resulting from accident, misuse, abuse, lack of reasonable care, use of the product that is other than normal or ordinary, using the project in abnormal working conditions or any other failures not resulting from defects in materials or workmanship. *Damage resulting from modification, tampering with or attempted repair by anyone other than SICCE or its designee. * Transfer of the product to someone other than the original purchaser. * Subjecting the product to electrical service not specified in the packaging; the original purchaser is responsible for providing adequate electrical facilities."

FIND OUT HOW TO GET YOUR PRODUCT GUARANTEED FOR 5 YEARS To improve our service and our customers' satisfaction, SICCE offers the possibility of adding a 2 year extension (5 years total) to the warranty by simply registering your product on our website www.SICCE.com in " Support/ Product Registration" Fill-in the form and upload the product's purchase receipt. After having correctly inserted all your data, complete the warranty extension request.

Warranty on Controller and AC/DC Power Adaptor: 2 Years

WARRANTY

SEAL AND SIGNATURE OF RESALE DEALER



DATE OF PURCHASE

____ / ____ / ____

day month year