

VEVOR[®]

TOUGH TOOLS, HALF PRICE

Technical Support and E-Warranty Certificate www.vevor.com/support

RETRACTABLE PATIO AWNING

USER MANUAL

We continue to be committed to provide you tools with competitive price.

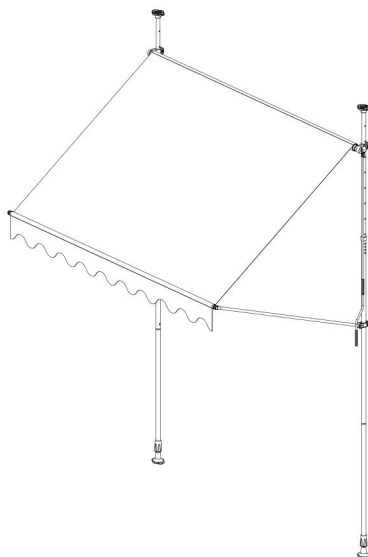
"Save Half", "Half Price" or any other similar expressions used by us only represents an estimate of savings you might benefit from buying certain tools with us compared to the major top brands and does not necessarily mean to cover all categories of tools offered by us. You are kindly reminded to verify carefully when you are placing an order with us if you are actually saving half in comparison with the top major brands.

VEVOR®

TOUGH TOOLS, HALF PRICE

RETRACTABLE PATIO AWNING

SDA200120



NEED HELP? CONTACT US!

Have product questions? Need technical support? Please feel free to contact us:



CustomerService@vevor.com

This is the original instruction, please read all manual instructions carefully before operating. VEVOR reserves a clear interpretation of our user manual. The appearance of the product shall be subject to the product you received. Please forgive us that we won't inform you again if there are any technology or software updates on our product.

General Guidelines

- Please read the following tips carefully and use the product correctly.
- If you buy the product for others, please keep these tips and send them to the receiver.
- In order for you to have a clear and summary preview, we have not described all possible scenarios and installation details that may be involved. If you need more information and help, please contact us.

Mounting Notes

- Check that all the parts are complete and intact before assembly.
- Mount the product on a level and firm ground.
- Please check and make sure that the wall is suitable for mounting in advance. Before the windy weather hits, be sure to retract or dismantle the product. Recommended for use in wind speeds below force 2.
- Ensure that the product is fixed between the ceiling and the floor and does not come loose.
- Ensure that no one is within the range of the product when it is extended or retracted.
- If using the product on a balcony, secure it with a rope to prevent it from falling.
- It is strictly forbidden to hang any objects on the product.
- The service life of the product, especially the life of the plastic parts, depends to a large extent on the weather conditions of the mounting site, so please check the product regularly to ensure that it is in good condition.
- When unpacking, use scissors with rounded corners to avoid damaging the fabric.
- 2 people are recommended for mounting this product.

Warnings

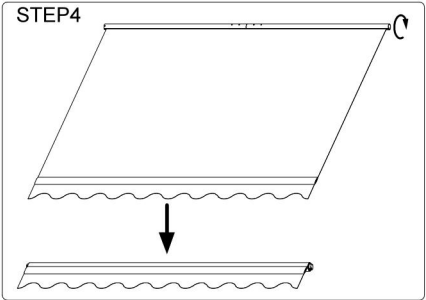
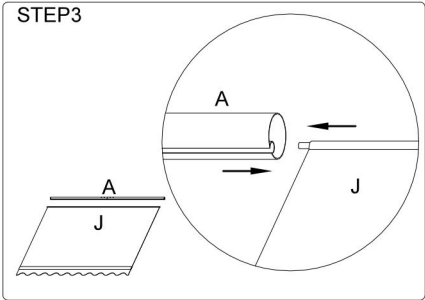
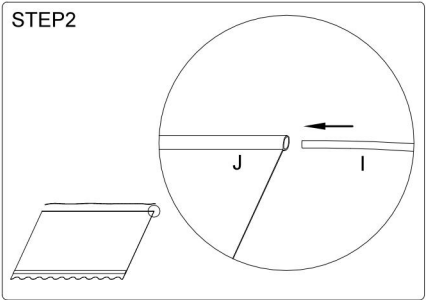
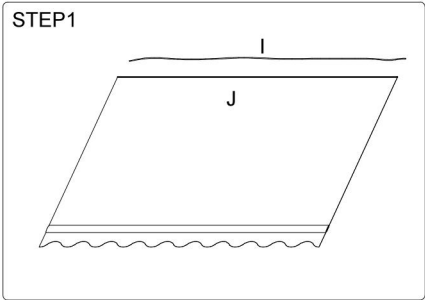
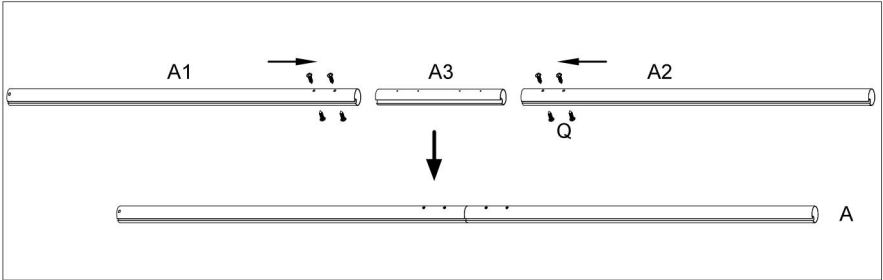
- Do not use it in bad weather conditions (e.g., rain, snow, frost, etc.).
The product is not suitable for protection against rain, snow, or wind.
- Always use the product on a flat and level surface.
- Keep away from fire sources.
- Do not start a fire or barbecue in or around the product.
- This product is only intended to protect the area below it from solar radiation and to reduce possible reflections. Therefore, when water or snow accumulates on the roof, it needs to be removed in time to avoid the danger of overwhelming the frame due to weight.
- Do not place items on and/or lean on the product.
- Do not hang or lean on the product.
- It can be wiped clean with a damp cloth and a neutral cleaner.
- To ensure the service life of the product, ensure that it is completely dry before storing.
- There are many small parts, so do not allow children to play with the packaging material for safety.
- Do not alter the design or configuration of the frame or any safety device, as this may result in a hazard.

SPECIFICATIONS

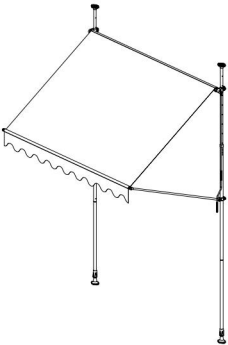
Model	SDA200120
Product Size	78×47in
Color	Black

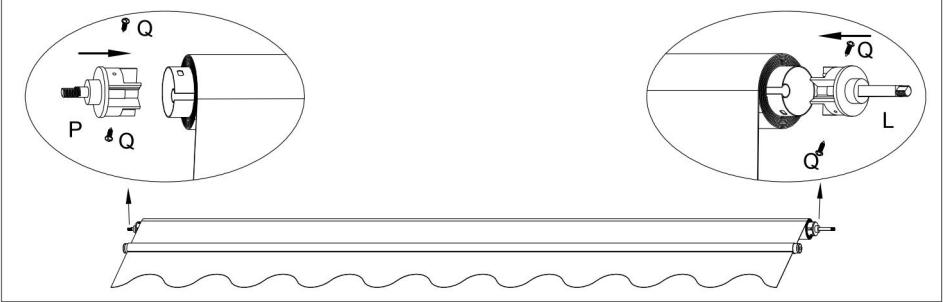
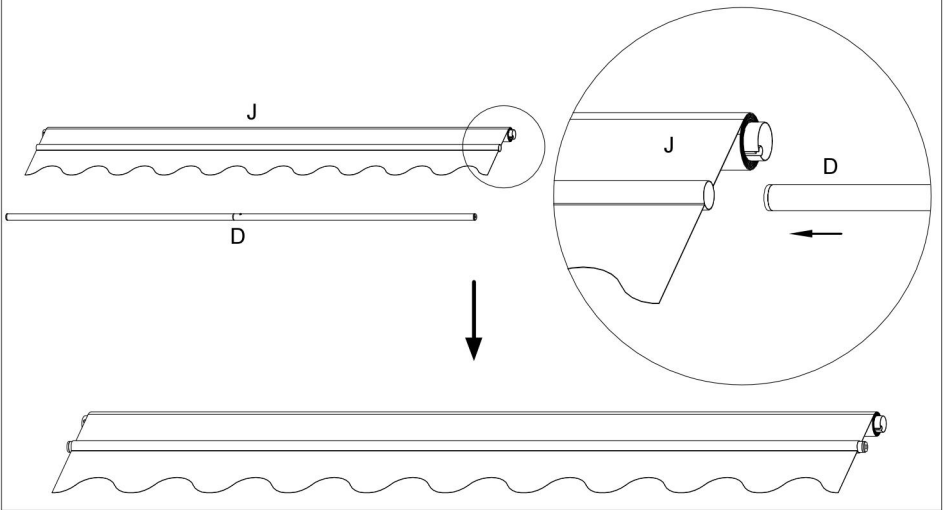
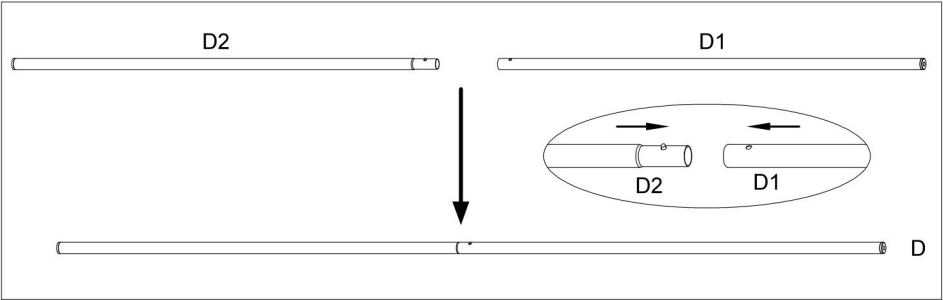
COMPONENTS

Assembly Instructions



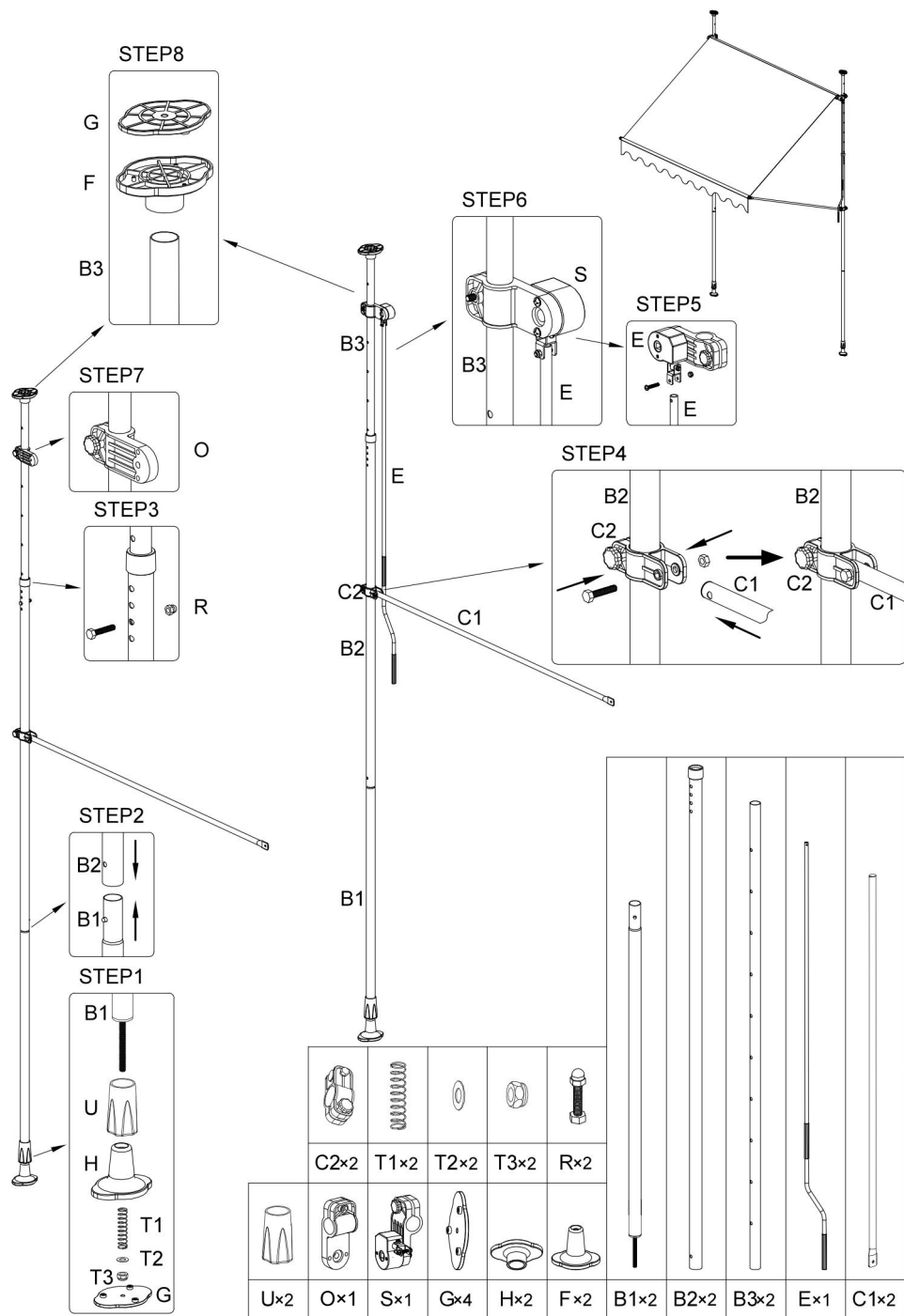
	Q×8
	A1×1
	A2×1
	A3×1
	I ×1
	J ×1

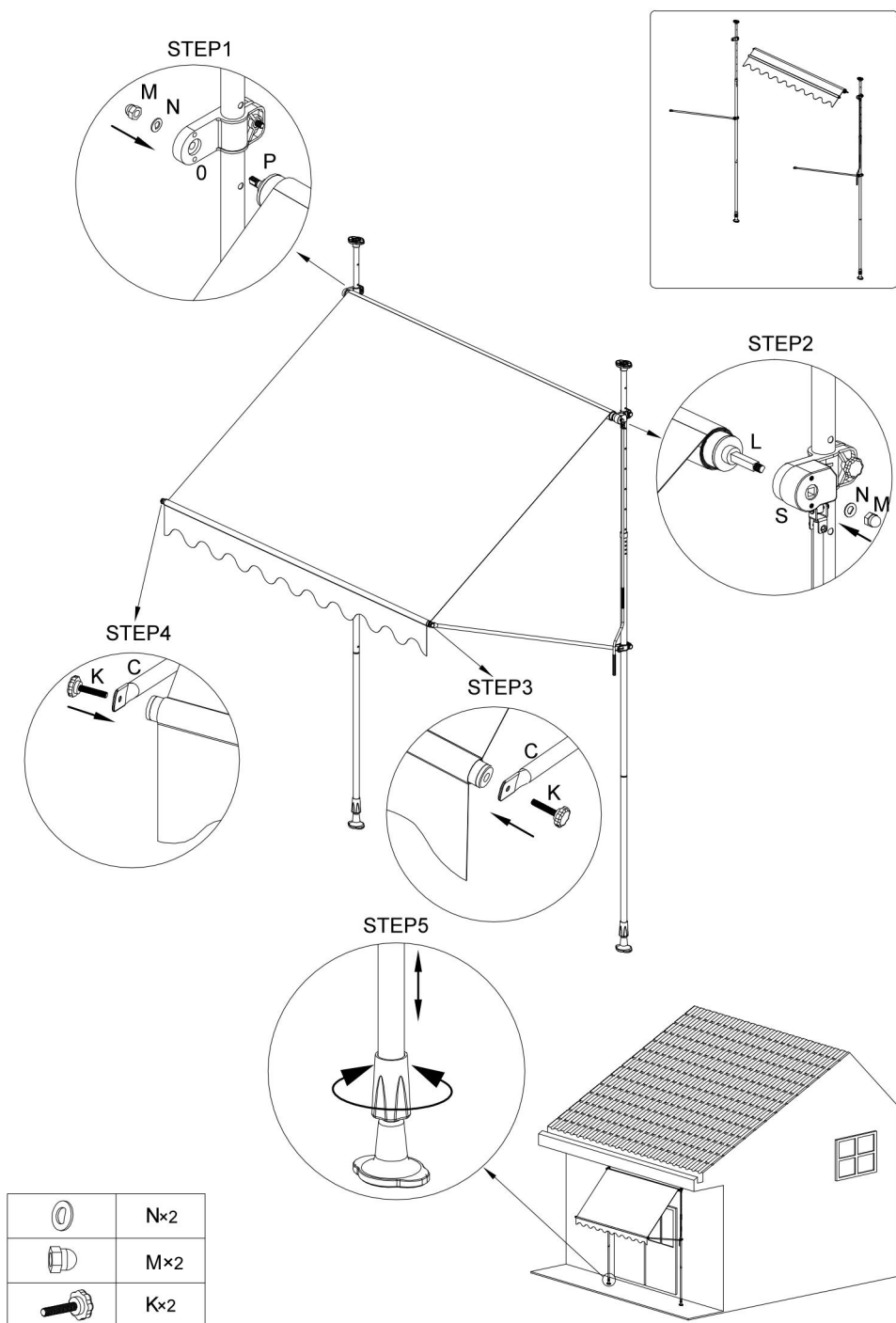




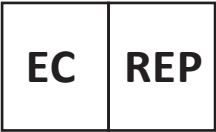
	D1x1
	D2x1
	Qx4
	Px1
	Lx1







Address: Baoshanqu Shuangchenglu 803long 11hao 1602A-1609shi Shanghai
Imported to AUS: SIHAO PTY LTD, 1 ROKEVA STREETEASTWOOD NSW 2122 Australia
Imported to USA: Sanven Technology Ltd.Suite 250, 9166 Anaheim Place, Rancho Cucamonga, CA 91730



SHUNSHUN GmbH
Römeräcker 9 Z2021,76351
Linkenheim-Hochstetten,Germany



Pooledas Group Ltd
Unit 5 Albert Edward House, The Pavilions
Preston, United Kingdom

Made In China

VEVOR[®]

TOUGH TOOLS, HALF PRICE

Technical Support and E-Warranty Certificate

www.vevor.com/support