



Thank You

For your purchase



Ergo JoJo

## HOW TO USE THE LAMP?

CONNECT the USB cable to a power source, such as a USB adapter plug, computer, or portable power bank.

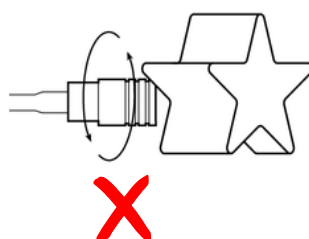
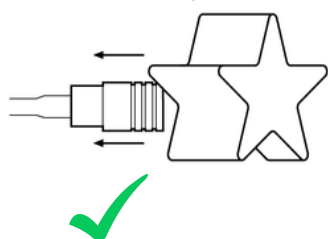
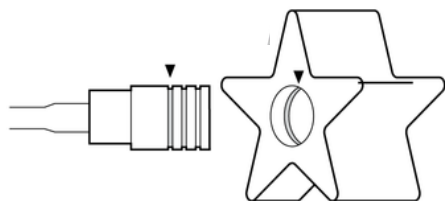
FIT the star on one of the golden rings on top of the lamp.

SWITCH the lamp on and adjust between the six brightness levels by pressing the brightness controller button.

REMOTE CONTROL- Pull out the tiny plastic bit at the bottom of the remote control and start using our 360-degree remote control from every angle.



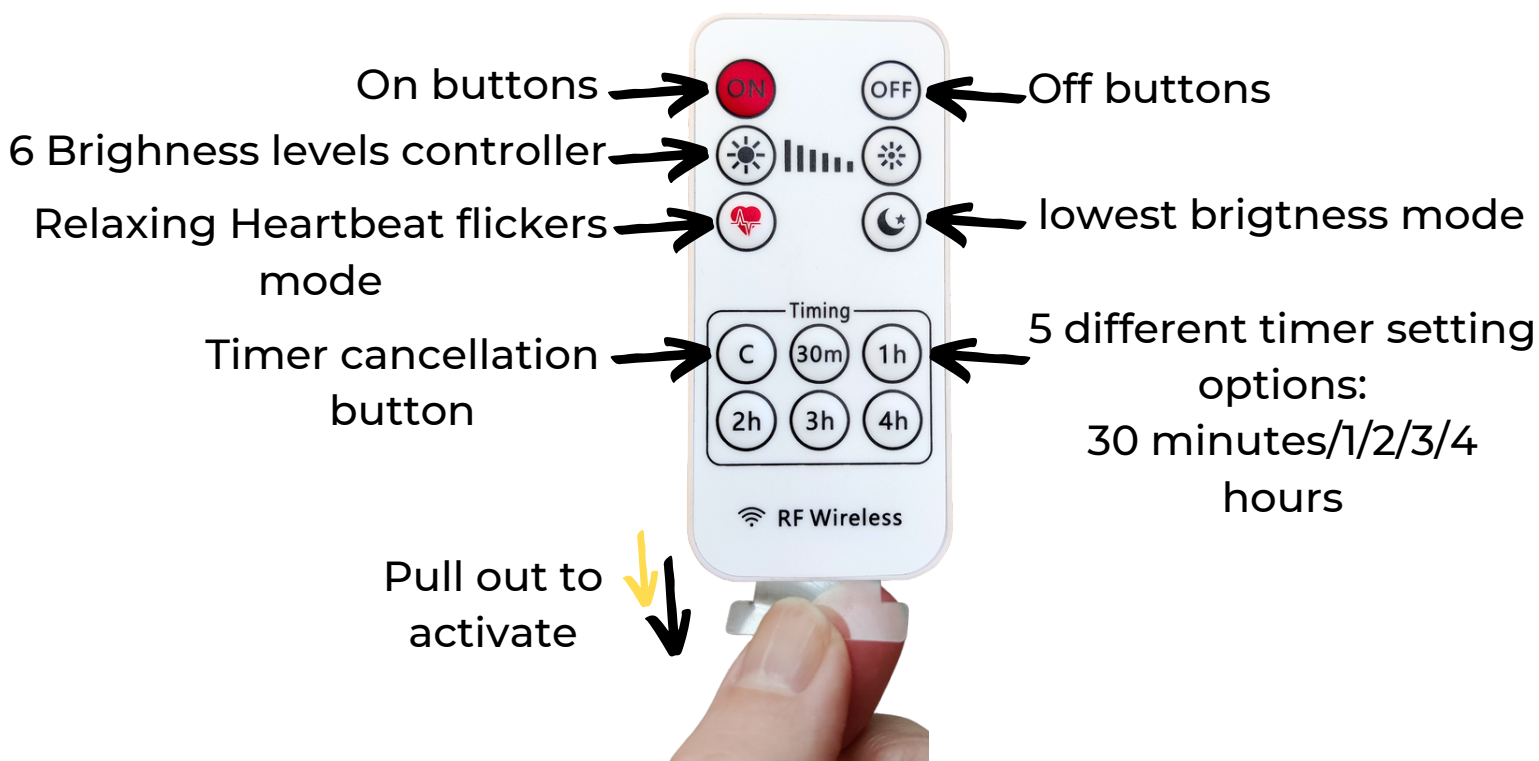
The extension must be fitted to one of the golden rings to create even light



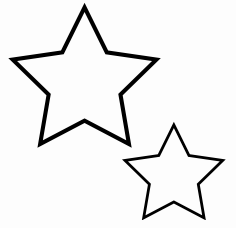
Simply push in/pull out the desired shape

Be sure not to unscrew the top while applying the silicon attachment

## A $360^{\circ}$ REMOTE-CONTROL



# SAFETY FIRST!



- This product is not a toy – never allow a baby or child to play with the light & silicon attachment, clip, cable, or adapter.
- **Keep the cable out of reach** and away from babies and children as they can be a strangulation hazard.
- The extension star is required to be **fitted on one of the golden rings**.
- **Ensure to not unscrew the top** while applying the silicon attachment by simply pushing in/pulling out the desired shape.
- We will recommend keeping the lamp on the **lowest brightness mode** while using it overnight, to ensure maintaining a long-lasting battery life and for ecological reasons, and simply to allow better quality of sleep.



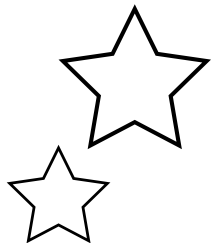
When the product reaches the end of its life, please dispose of it separately from your household waste and take it to a collection point designated by local authorities.



**CHOKING HAZARD** - Small parts. Not for children under 3 yrs.

**Long cord** - Strangulation Hazard. To be used under a direct supervision of an adult.





## OUT GUARANTEE

- A 1-year guarantee is included for all our ErgoJoJo lamps.
- ErgoJoJo complies with all relevant safety standards, including CE, ROHS (food grade) & EN71 Certifications.
- ErgoJoJo is a registered trademark and design.
- The LED bulb is non-replaceable. The lamp has a lifespan of approximately 50,000 hours.



## WE'RE HERE FOR YOU!

For any questions, comments and suggestions please get in touch:

[info@ergojojo.com](mailto:info@ergojojo.com)

+44 (0)2036577133

<https://ergojojo.com/>