

Package Included:

- 1 * Voice Amplifier
- 1 * Wired Headset Microphone
- 1 * Type-c Charging Cable
- 1 * USB-PD Charging Plug
- 1 * Audio Cable
- 1 * Adjustable Waistband
- 1 * User Manual



YOCEWECA After-sale Service

We provide full refund or replacement within 30 days + 12 months warranty + professional technical support

techsupport1022@163.com

If you have any questions, please feel free to contact us, we will try our best to serve you

However, there is no guarantee that interference will not occur in a particular installation. If this equipment does cause harmful interference to radio or television reception, which can be determined by turning the equipment off and on, the user is encouraged to try to correct the interference by one or more of the following measures:

- Reorient or relocate the receiving antenna
- Increase the separation between the equipment and receiver
- Connect the equipment into an outlet on a circuit different from that to which the receiver is connected
- Consult the dealer or an experienced radio / TV technician for help

The device has been evaluated to meet general RF exposure requirement. The device can be used in portable exposure condition without restriction.

FCC Warning:

Any changes or modifications not expressly approved by the party responsible for compliance could void the user's authority to operate the equipment.

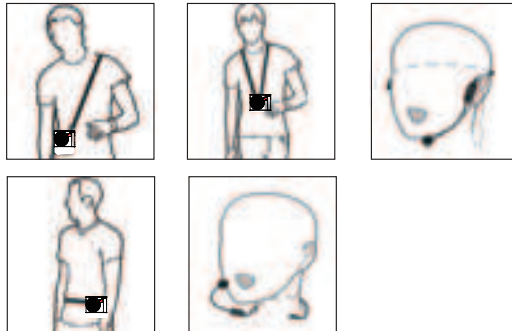
This device complies with part 15 of the FCC Rules. Operation is subject to the following two conditions:

- (1) This device may not cause harmful interference
- (2) This device must accept any interference received, including interference that may cause undesired operation.

Note:

This equipment has been tested and found to comply with the limits for a Class B digital device, pursuant to part 15 of the FCC Rules. These limits are designed to provide reasonable protection against harmful interference in a residential installation. This equipment generates uses and can radiate radio frequency energy and, if not installed and used in accordance with the instructions, may cause harmful interference to radio communications.

How to wear voice speaker and microphone:



Warm Reminder:

- 1 Take out the amplifier, fasten the waist belt to metal hooks on both sides; Then tie it on the waist or hung on your shoulder, the belt is adjustable
- 2 Wear the headset microphone and adjust the position, stay 1 - 2cm away from the mouth. Insert the other end of the 3.5mm connector into the voice amplifier's MIC port

Trouble Shooting:

- 1 No sound after powered on the speaker
 - A. Scroll the switch key to adjust the volume of the speaker and turn it up
 - B. No response after any operation: Please feel free to contact us to solve your issue smoothly
- 2 Speak with wired headset microphone, but the amplifier has no sound
 - A. Please make sure the volume of the speaker is turn up
 - B. Please confirm whether the wired microphone has been connected well with the amplifier or not
- 3 The voice amplifier has distinct howling
 - A. Do not point the microphone toward the speaker
 - B. Wear the microphones correctly: put the microphone in front of the mouth
 - C. In a small room, please turn down the volume properly to avoid howling

Please note:

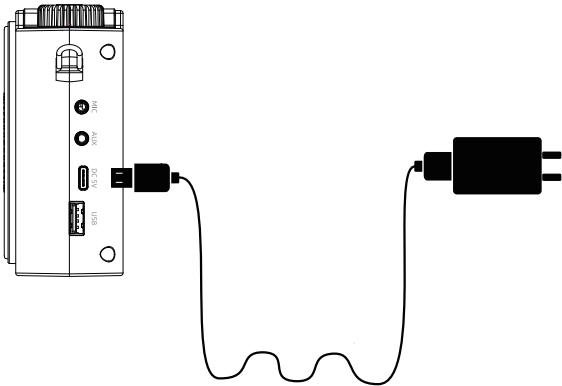
- 1. Please use a DC 5V power adapter to charge the speaker
- 2. Plug adapter into 110-240 AC outlet. Connect the cable end into the DC 5V power input on speaker
- 3. Please DO NOT over charge the battery by leaving the system plugged in continuously. This will reduce the life of the internal rechargeable battery and could cause over heating
- 4. Please charge the speaker before using it at the first time, unplug after fully charged in time. And please keep the amplifier's battery more than 60% when you don't use it in a long time to avoid to damage the battery

Technical Parameters:

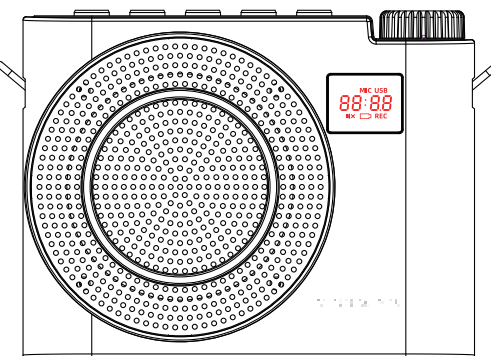
Power output:	20W	Frequency response:	20Hz-20KHz
Battery capacity:	2500mAh	Charging port:	Type-C
Charging voltage:	DC 5V	Amplifying time:	10-12 hours
Unit weight:	0.77lb	Charging time:	About 3 hours

7. How to charge the speaker?

- Using fast charging technology, it takes about 3 hours to fully charge the amplifier, and it supports charging while using
- When the battery indicator flashes, it means that S398 needs to be charged
- In charging status: The current battery level "88%" will be displayed on the screen. The longer charging time, the larger number on the screen before fully charged
- Fully charged: The "100%" stays on the screen

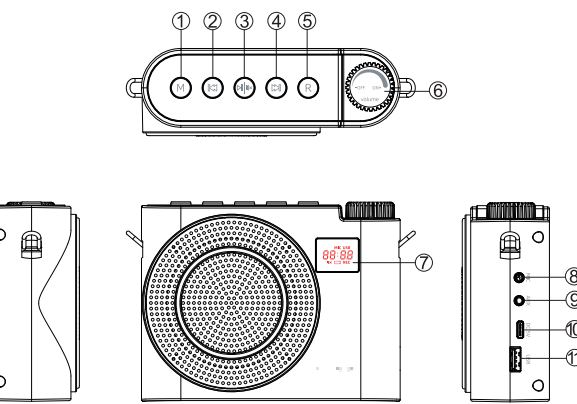


YOCEWECA Voice Amplifier User Manual



S398

Function Illustration



- 1. Mode switch
- 2. Previous song
- 3. Play / Pause / Mute
 - A: In USB mode and Bluetooth mode, short press " " to play / pause music
 - B: In microphone plug-in mode, short press " " to mute / amplify voice
- 4. Next song

- 5. Recording
- 6. Knob Switch
- 7. LCD Display Screen
- 8. Mic-in Jack
- 9. Aux Jack
- 10. DC 5V Type-C Charging Port
- 11. USB Slot

Detailed Introductions

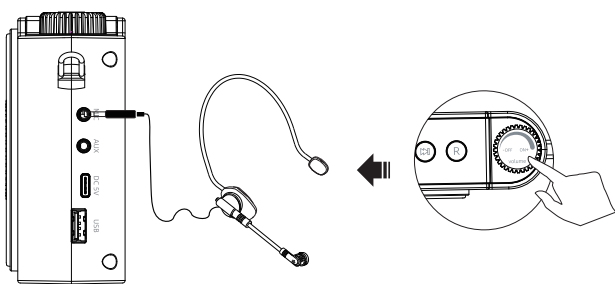
1. Mic plug in and play

- 1. Twist the knob key to switch on the speaker, "HI" will appear on the display, followed by battery level, and then shows "88%"
- 2. Plug the wired headset microphone into Mic port, your voice will be amplified. The "MIC" mark keeps show on the screen

Warm Tips:

- 1) Voice amplifier's volume ranges from 0-20, a total of 20 levels

- 2) Please kindly turn down the volume to level 0 first after switch on the speaker, the display will shows "U00", and plug the mic, then adjust it according to your own needs to avoid howling
- 3) The speaker supports to play music and amplify voice at the same time
- 4) In any mode, if no working signal is detected for more than 30 minutes, S398 enters into dormant status automatically, you can press any key to wake it up



2. Bluetooth

Short press "M" button to enter into Bluetooth mode with "bBLUE" indicator keeps flashing on the display

The step of how to pair BT with your device:



After connected successfully, the "bBLUE" indicator stops blinking and lasts on, with a voice prompt "Dong"

Warm Tips:

- Please keep the distance between the speaker and your device within 10m to keep the signal stable when playing audio files.

Otherwise, the Bluetooth will be disconnected

3. How to play TWS?

- 1. Turn on two S398 speakers, click their "M" button to enter Bluetooth mode with indicator flashing, long press one of speaker's "M" button to enter pairing status, the other one Bluetooth indicator become solid lights means these two speakers are connected successfully.
- 2. Turn on your phone or Bluetooth device and search name "S398" to pair. You will hear a prompt when connected successfully. After disconnecting the TWS connection, there will also be a prompt.

4. How to play audio files by U disk?

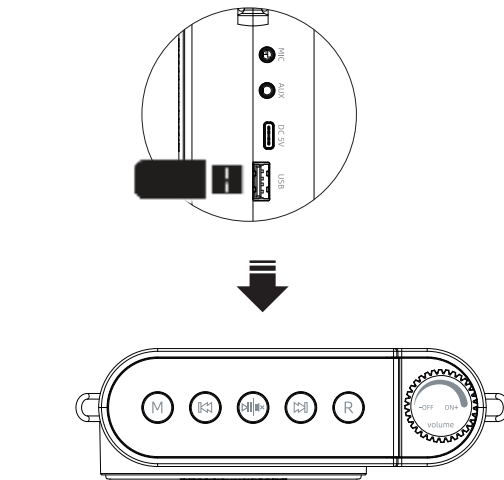
Insert a U disk into USB slot, the speaker will enter into USB mode and play audio files in U disk automatically, the display will occur "USB"

Warm tips:

- 1. Please make sure that the U disk have audio files (such

as: songs, recording files, etc)

- 2. Short press " " / " " to switch to previous / next audio files. Under USB mode and Bluetooth mode, long press " " / " " to adjust the volume of BGM
- 3. In USB mode, long press "M" button to enter into single repeat and all repeat, the display will show "ONE" and "All"
- 4. The voice amplifier set excluding U disk



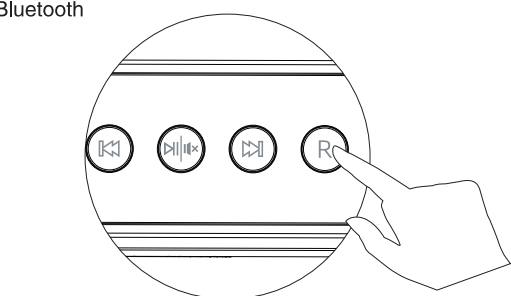
5. How to play recording?

Based on inserting a U disk (excluding) and wired Mic:

- 1. Short press the " " button to start recording, the recording time (such as 00:01) and the "REC" will flash on the screen
- 2. Short press the " " button or short press the " " button to quit the recording, and the recording files will be saved automatically
- 3. Long press the " " button to play recording files

Noted:

- 1) Short press " " / " " to switch to the previous / next audio files
- 2) Support Bluetooth and MIC recording at the same time, which means It can record your voice while playing music via Bluetooth



6. How to play audio files by Aux cable?

Plug the 3.5mm audio cable into the Aux jack, the speaker will enter into Aux mode and play audio files by your device automatically, the screen shows "RUX"

Audio Format supported:

MP3 WAV WMA APE FLAC

