

T700 USER MANUAL

Email: support@redtigercam.com

Website: <http://www.redtigercam.com>

Phone: +188 8966 8028

 Instagram



WARNING: Be careful when using your camera and its accessories. Always be cautious of your surroundings to avoid injuring yourself and others.

Make sure to follow all local laws including all privacy laws which may restrict recording in certain areas.

IC warning:

This device contains licence-exempt transmitter(s)/receiver(s) that comply with Innovation Science and Economic Development Canada's licence-exempt RSS(s). Operation is subject to the following two conditions:

1. This device not cause interference.
2. This device must accept any interference, including interference that may cause undesired operation of the device.

Radiation Exposure: This equipment complies with Canada radiation exposure limits set forth for an uncontrolled environment. To maintain compliance with IC's RF Exposure guidelines, this equipment should be installed and operated with minimum distance of 20cm the radiator your body. This device and its antenna(s) must not be co-located or operation in conjunction with any other antenna or transmitter.

Déclaration de l'ISED Canada:

Cet appareil contient des tasmittre (s) / récepteur (s) sans licence / conformes à l'innovationRSS exemptes de licence de Sciences et Développement économique Canada. L'opération est sous réserve des deux conditions suivantes:

1. Cet appareil ne peut pas causer d'interférences et.
2. Cet dispositif doit accepter toute interférence, y compris peut provoquer le fonctionnement indésirable de l'appareil.

Exposition aux rayonnements: Cet équipement est conforme aux radiations du Canada limites d'exposition pour un environnement incontrôlé noncé d'exposition RF Pour maintenir le respect des guides d'exposition RF d'IC, cquipment doit être installé et actionné avec une distance minimale de 20cm le radiateur de votre corps. Cet appareil et ses antennes ne doivent pas être co-localisé ou en opération en jonction avec toute autre antenne ou émetteur.

Contents



Mainten Your Camera	02
What's in the box?	03
Mounting the Mirror	04
Mounting the rear camera	06
Mounting the GPS	10
Meeting Your T700	12
T700 Power Tools	13
Setting Up Your Camera	14
Customizing Your T700	17
Redtiger Player (PC)	28
Customer Service	30
Product Information	31

Mainten Your Camera



Do not directly plug and unplug the cable or SD card, please perform related operations after camera off.

We do not encourage you connection your camera with other hardwire kit, but if you insist to do this, please have a look of those lower than 6V and higher than 3A.

Do not expose to the sun for a long time is the best, camera will heat on during its working, any damaged by high temperature will be added to 1 year free replacement warranty.

What's in the box?



T700 Mirror Dash Cam



GPS Receiver



Backup Camera Cable *1



Car Charger *1



3M Sticker*1
Mount Bracket*1
Screws *4
(Inside of Vehicle)



Backup Camera *1



Straps *4



User Manual*1



Tool *1



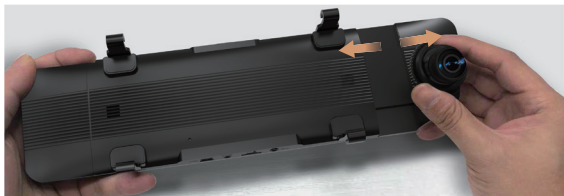
Cleaning Cloth *1



Cable Straps*5

Mounting the Mirror

Step 1: Pull out the lens of the T700 dash cam to match the rearview mirror of the vehicle.



Step 2: Extend the straps around the back of the rear-view mirror and attach them to the bottom retaining hooks.



Mounting the Mirror

Step 3: Power on the dash cam with box included car charger, don't charge it with your own chargers.



Step 4: Test the camera to make sure everything works.



Mounting the rear camera

How to install the rear camera

We recommend installing the rear camera outside the car (above the license plate). The effect of the rear camera inside the car may be affected by the windshield.

1. Tear off the 3M tape on the rear lens and paste it above the license plate.



2. Remove the Panel

Remove the inner panel of the trunk to expose the rear wiring compartment of the car. Open the trunk and look for a sturdy inner panel covering the other side of the license plate installation area. Then, insert a decorative removal tool or another thin device behind the panel and pry it apart.



3. Snake the cable

Use a trim removal tool to pop out tailgate trim, then run the cable from outside of the car into the trunk of your car.



4. Connect the rear camera's power cable to the extension cable. After snaking your rear camera's extension cable, connect the power cable to your rear camera's extension cord. **If you need to install a trigger cable to activate the reversing guidelines, please find the positive cable of the reversing lamp or ask a professional for help.**



Mounting the rear camera

PLACEMENT OF REAR LENS INSIDE CAR



Step 1: Confirm the accessories

1 pc mount bracket (2 pcs black iron sheets)

4 pcs screws (2 pcs small screws, 2 pcs large screws)



Step 2: Place a iron sheet over the rear camera, aim it at the hole, and screw it on.



Step 3: Join the two iron sheets together and turn on the screws.

Mounting the rear camera



Step 4: Stick the bracket to the rear windshield with 3M glue

NOTE:

1. We suggest to install outside the car, the effect inside the car is far worse than outside the car.
2. If your car is a RV or a pickup truck, you can install the rear camera forward (the bracket is below), and turn on the "Upside down of rear camera" and turn off the "Rear Cam" Mirror Image" to adjust the image. If you need a license plate bracket, we also provide this accessory, feel free to CONTACT US.

Mounting the rear camera

Placement of rear cam outside car

We suggest to install outside car, not inside



Step 1: Tear off the release paper of 3M sticker on Rear lens.

Step 2: Paste the rear lens directly above the license plate.

Mounting the GPS

How to install the GPS



GPS front and back

Installation location



Position 1: Considering that the front windshield of a motor vehicle has a large enough view of the sky, it is usually recommended that the GPS module be placed in the central console. At the corners of the central console and the edge of the windshield, after adopting hidden wiring, they are fixed with double-sided tape.

Mounting the GPS

Considering the use effect and installation convenience, we usually recommend customers to install it at position 1. Of course, you can also try to install it in other locations for testing, and choose the location you think is most suitable.

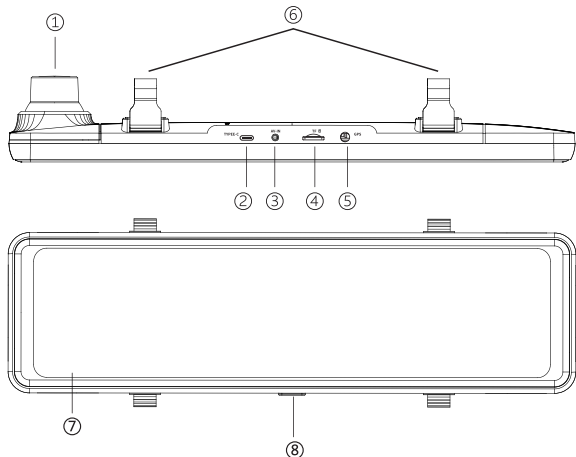


(1) Install the GPS Antenna onto the camera, the GPS Antenna will start to search for a GPS signal.



(2) Once the GPS is installed, the GPS icon on the home screen will show. After the GPS signal has been received, it will show direction and speed. (Prerequisite: "GPS Disp" in the settings is turned on)

Meeting Your T700



NO.	Name	Description
1	Front Camera	Record the front view of the vehicle
2	Power Supply Port	Connect the car charger
3	Rear Camera Port	Connect the rear view camera
4	MicroSD Card Slot	Insert a Micro SD card (maximum support 128G)
5	GPS Port	Connect the GPS receiver
6	Fasteners	Please use the included silicone straps
7	Screen	11 inch IPS touch screen
8	Power Button	Short press to turn off the screen, long press to turn off the power

T700 Power Tools



1. Cig Charger

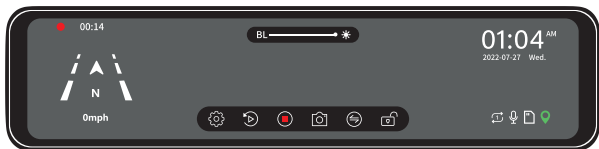
Note: It is best to use the power cord that comes with our products, or our professional hardware kits.



2. Hardwire Kit

Note: Not included, need to be purchased separately.

Setting Up Your Camera



	Speed & Driving Direction: Once GPS is connected, the information will show
	Screen Brightness Adjustment: Slide the bar left and right to adjust the screen brightness
	Settings: Touch to enter the menu setting
	File Playback: Playback the video & Photo
	Start/ Stop Recording
	Front / Rear View Switch: Switch between front view & rear view
	Snapshot: Take a Snapshot
	Emergency Lock: Lock videos as event files so it won't be overwritten by loop recording
01:04 AM 2022-07-27 Wed.	Date & Time
	Recording Status: Yellow flashing means Lock Recording
	Show SD card status
	Audio Record is on
	Loop Time: Adjust the loop recording duration (1Min/2Min/3Min)

Setting Up Your Camera

While recording, swiping the screen up and down adjusts the angle of view.



While recording, swipe the screen left or right to switch between front view, rear view, or split-screen view.



Touch the touchscreen to display the brightness scrollbar at the upper center, then slide right or left to adjust the brightness.



Setting Up Your Camera



SD CARD

With your camera off, insert the SD card into the card slot with the label facing the back of your camera. You can eject the card by pressing it into the slot with your fingernail.

WIRING SET UP

Connect your camera to a Cig charger using the included cig charge cable.

You'll need a micro SD card (sold separately) to save your videos and photos. Use a U3 Class 10 SD Card dedicated or your camera may malfunction.

SD cards can degrade over time and affect your camera's ability to save your media. Try swapping out an older card for a new one if you're having any problems.

Customizing Your T700

Power ON/OFF

If you turn on the engine (ACC on) while the cigar power adapter is connected, the power will be turned on automatically and the opening screen will be displayed.

Press and hold the power button to turn off the power during startup, and then briefly press the power button again to turn on the power of the unit and display the opening screen.

Briefly press the power button to turn off the screen.

Menu Settings



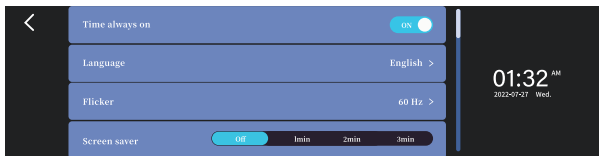
After powering ON the camera, please press the icon (⏏) to pause the recording first, and then press the icon (⚙️) to enter the setup process.

Customizing Your T700



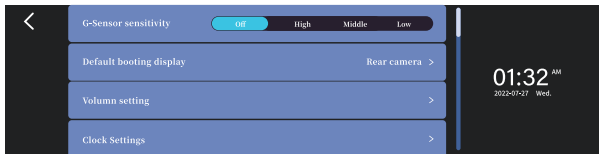
Function	Function Description	Function Options
Rear camera brightness adjustment	Adjust the brightness of the rear camera	High/Middle/Low
Resolution	Adjust the video recording resolution	2160P+1080P 1440P+1080P 1080P+1080P
Movie Clip Time	Adjust the loop recording duration	1munite/ 2minutes/ 3minutes
Sound Record	Turn On/Off audio recording	On/Off

Customizing Your T700



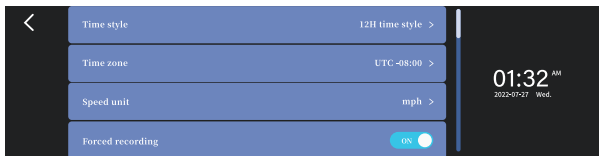
Function	Function Description	Function Options
Time always on	When this setting is turned off, the time is not displayed when in therecording interface	On/ Off
Language	Set the common language, the default is English	English/Deutsch/ Français/Italiano/Português/ 简体中文/繁體中文/日本語/ 한국인/ Latviešu
Flicker	/	50Hz 60Hz
Screen saver	Set the status of the screen display when recording	Off: The screen is always on. 1min/2min/3min: Automatically close the screen.

Customizing Your T700



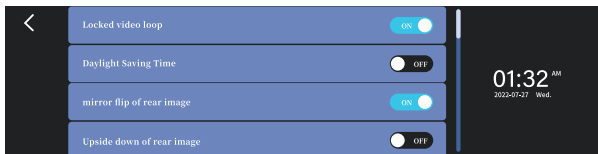
Function	Function Description	Function Options
G-Sensor sensitivity	Adjust the sensitivity of G-sensor ,it is recommended to adjust to "Low"	Off/Low/ Medium/ High
Default booting display	The mode displayed on the screen	Split Screen/ Front camera/ Rear camera
Volumn setting	Adjust the volume	/
Clock Settings	No need to set it by default. If you need to set it manually, please turn off the GPS to automatically set the time before setting it.	/

Customizing Your T700



Function	Function Description	Function Options
Time style	/	24H Time style/ 12H Time style
Time zone	Time Zone	UTC -08:00
Speed Unit	Set the vehicle speed display mode	KM/H MPH
Forced recording	If you stay in other interface and forget to record video, it will force to start recording	On/Off

Customizing Your T700



Function	Function Description	Function Options
Locked video loop	The principle of the loop recording function is to only overwritethe unlocked normal video to record a new video. If you want tolock the video to be covered as well, please turn on this function.	On/Off
Daylight Saving Time	/	On/Off
Mirror flip of rear image	Flip the recording horizontally	On/Off
Upside down of rear image	Flip the recording direction up and down	On/Off

Customizing Your T700

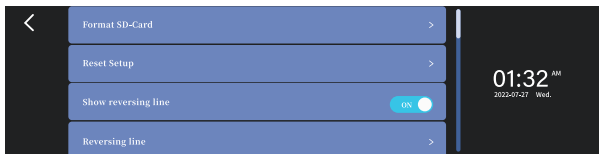
Mirror flip of rear image



Upside down of rear image



Customizing Your T700



Function	Function Description	Function Options
Format SD-Card	This feature will allow you to format inserted memory card, all the data will be deleted	OK/Cancel
Reset Setup	All setting will be deleted	OK/Cancel
Show reversing line	/	On/Off
Reversing line	Adjust the reversing line	/

Customizing Your T700

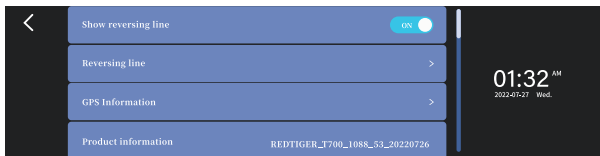


NOTE

If your car does not have a reversing system and you need a backup reversing system as an aid, you need to connect the red cable of the rear cam to the positive pole of your reversing lamp. If your car already has a reversing system, you just ignore the red cable on the rear cam.

When you shift to "r" gear, the rear view will automatically show on the screen with reversing lines for easy and safe parking. You can enter the "Reversing line" option in the settings, then adjust the angle of the reversing image and the reversing line. Also when in reversing, you can adjust the viewing angle of the image. (This function activates after the red wire of the rear camera is connected to the positive pole of the reversing light.)



Customizing Your T700



Function	Function Description	Function Options
GPS Information	Check the GPS signal reception details. (Number, Time, Longitude, Latitude)	/
Product Information	Check the product model and firmware version	/

Customizing Your T700

Playback Mode

When you turn on the power, the dash cam will start recording automatically. Please press the icon  to pause the recording first. Click  to enter the playback mode.


Playback menu



- | | |
|---|-------------------------------|
| 1. Loop recording files | 5. List of video files |
| 2. Locked video files | 6. Play/Pause |
| 3. Snapshot files | 7. Delete specified file |
| 4. Switch the front-view or rear-view video file list | 8. Lock/Unlock specified file |
| | 9. View videos on fullscreen |

CAUTION

The front-view video and the rear-view video are displayed in different file lists.

You need to click  to switch between the front-view video list and the rear-view video list.

Redtiger Player (PC)

DOWNLOAD GPS PLAYER

Download our GPS Player from website:
<https://www.redtigercam.com/pages/gps-player>



Transfer your recordings to computer



Drag in GPS Player



Redtiger Player (PC)

USE YOUR GPS PLAYER



USE YOUR GPS PLAYER



Customer Service

WORDS FROM HEART

Since our products are related to the safety of customers, we are committed to producing the best product quality and high-quality after sales support.

In view of no product is flawless, we sincerely believe the true measure of the company's character is what it does *after* its product does not meet expectations, we feel sorry for those customers, but deeply grateful for them to make us one more step closer to your most trustful automotive after-market brand.

We are willing to provide 1 month free return for your product, 1 year limited warranty, and lifetime technical support. Your product is guaranteed to be free of defects in materials and products from the date of purchase. In addition, you can also exchange your 1 year old product for a discounted price by contacting us online.

Behold the motif of complexity to us, simplicity to others, it's such a pleasure to listen to your advice, and we will promptly address any problems that arise.

Redtiger Customer Service Team.



E-MAIL



WHATS APP



FACE BOOK



LINE

Email

Mirror Dash Cam

Email: support@redtigerscam.com

Mini Dash Cam

Email: help@redtigerscam.com

Business Cooperation or Others Email:

contact@redtigerscam.com

Customer Phone Service:

+1 888 966 8028

Product Information



Item Name	11" Stream Media Dash Camera
Model	REDTIGER T700
Screen Size	11" IPS Touch Screen
Power Interface	Type C 5V/3A
Battery	Super Capacitor
Recording Resolution	Front Camera: 3840*2160P, 2560*1440P, 1920*1080P Rear Camera: 1920*1080P
Loop recording	1/2/3 mins
Recording method	Normal Recording/ Emergency Recording
Screen View	Front + Rearview/ Front view/ Rearview
Video Format	Video: TS; Still image: JPG
Memory Card	Micro SD card 32G ~ 256G
GPS	Yes
G-sensor	Yes
Audio	Support sound recording and playback
Operating Temperatue	-4°F ~ 158°F



Redtiger

Always go-to dash cam



About Us

In an automobile-interconnection era,
everything about charm journey is within the reach of eyes.

Product and service are the foundation of Redtiger.

We have an expert research and
development team of "self-driving experts".

Based on the personal needs of users,
we use technology to drive product innovation.

In the future, we will continue
to explore the boundaries of tech to open up
a broader vision for driving.